

# The Sonic Blinds Advantage



## Our History

Since 1988, Sonic Blinds has been a full-service residential and commercial design and manufacturing facility of top quality custom window treatments.

Located in Western New York, Sonic Blinds fabricates a wide range of custom blinds, shades, shutters and draperies, as well as a selection of motorized applications.

In addition to servicing the local residential and commercial markets, Sonic Blinds designs and fabricates products on a wholesale level for select dealers throughout the country.

## Our Capabilities

As a family-owned business, Sonic Blinds has grown over the years to become an award winning industry leader and innovator, having developed patented fabrication technology offered exclusively to its customers.

The company's state-of-the-art manufacturing facility is equipped with the highest quality, custom-made equipment, including ultrasonic cutters and sealers. The Sonic Blinds patented Seal-n-Split® process eliminates frayed edges on roller shades — a common problem with conventional roller shade fabrication.



*Delaware North Headquarters, Buffalo, New York.  
Fabricated and installed 850 window shades.*



*A curved glass wall 100 feet wide and 2 stories tall features custom motorized roller shades and motorized, custom curved drapery hardware and drapes.  
Banquet Room, Westin Hotel, Buffalo, New York*

# A Reputation for Excellence



## Our Service Commitment

Sonic Blinds takes great pride in providing outstanding custom window covering products and customer service. The expert staff is comprised of dedicated, trained professionals, fully accredited with 20+ years of specialized experience in the industry. Company policy is to only produce custom coverings of superior quality workmanship and materials, fabricated to exacting customer specifications and delivery time-lines... all for an exceptional value.

## Your Assurance of Quality

Only the best industry-recognized OEM parts, components and fabrics are used for fabrication, to ensure unsurpassed durability and long-lasting beauty, so that every custom window covering produced is guaranteed to perform beyond customer expectations.



*At the Sonic Blinds fabrication facility, quality is never compromised. Specifications and workmanship are constantly monitored to ensure product performance and customer satisfaction.*



2890 Niagara Falls Blvd.  
Amherst, NY 14228  
(716) 831-8600  
Fax: (716) 831-9749

## **Warranty and Maintenance Instructions**

### **This warranty includes:**

Roller Shades with Solar or 4-ply vinyl black out fabric

**5 Year Warranty** Sonic Blinds, Inc. warrants that their products will be free from defects in materials and workmanship. Warranty does not cover damages due to abuse, accidents, or exposure to elements. This warranty does not apply to conditions considered to be normal wear and tear. Sonic Blinds, Inc. will repair or replace the product or component found to be defective and does not cover travel/shipping charge, and any removal or reinstallation charges.

*Manufactured by Sonic Blinds, Inc., Buffalo, NY 14228*

Available through:  
Sonic Blinds, Inc.  
2890 Niagara Falls Blvd.  
Buffalo, NY 14228  
(716) 831-8600

### **Cleaning Instructions:**

Roller shades: Fabric can be washed with mild detergent and scrubbed with a soft brush. They can also be cleaned ultrasonically.

### **Maintenance:**

The clutch controls do not require any periodic maintenance.  
Spring rollers do not require any periodic maintenance.

### **Do Not Lubricate**

The clutch control mechanism relies on friction to operate and should **not** be lubricated. Lubricating the mechanism will cause immediate failure and is not covered under warranty.



# Rollease Acmeda Hardware

# SKYLINE

## ROLLER SHADE SYSTEMS



Sonic Blinds uses genuine Rollease Acmeda clutches, operating systems and accessories for all manual roller shade fabrication. Rollease Acmeda is the leading designer and manufacturer of premium clutch-based window covering operating systems worldwide, and their award-winning lift systems are considered the finest in the industry.

### Skyline System Features:

- Smooth, even and dependable operating clutch technology in a sleek profile.
- Stylish design – rounded end caps and no-notch fascia provide a polished finish.
- Fiberglass-filled nylon construction for long-lasting durability.
- Cassette and fascia options available.
- Spring Assist System available for large shades to reduce force needed to raise and lower shade.
- Easy-to-operate, durable stainless-steel beaded control chain.
- Hardware available in five popular colors to complement any decor.
- The internal aluminum bottom bar is heat sealed inside the fabric pocket for maximum durability and perfect color coordination.

### Roller Shade Specifications:

<b>Roller Tube</b> .....	Extruded aluminum with internal rib to prevent rotation of clutch.
<b>Tube size, OD</b> .....	1 1/8" (.040 wall thickness) diameter tubes, 1 1/2" (.050 wall thickness) diameter tubes, or 2" (.065 wall thickness) diameter tubes depending on shade size. Meet or exceed recommended size based on Rollease guidelines for fabrication.
<b>Internal Bottom Bar</b> ....	Extruded aluminum, 1" wide x 1/8" thick. Sealed inside hem at bottom edge of shade.
<b>Control Clutch</b> .....	Hooked clutches for easy, universal performance. <b>Rollease SL-10</b> (10lb. capacity), <b>Rollease SL-15</b> (15 lb. capacity), or <b>Rollease SL-20</b> (20 lb. capacity).
<b>Spring Assist System</b> ..	When needed, it's used to reduce the force required (to approximately 6 lbs. or less) to raise and lower extremely large shades (up to 30 lbs.).
<b>Idle End Plug</b> .....	Spring-loaded, pin-end technology is highly forgiving for greater flexibility in installation. Fiberglass-filled nylon construction provides long lasting durability.
<b>Control Chain</b> .....	Stainless steel bead chain, #10 size, with 50-51 balls per foot, or Plastic bead cord, color-coordinated to shade.
<b>Installation Brackets</b> ...	Universal brackets available in standard and dual with multiple projections.
<b>Shade Cloth</b> .....	See separate specification sheets for shade fabrics.

### Additional Options

<b>Cassette</b> .....	Sleek, curved design in extruded aluminum conceals shade hardware. Light weight for easy installation. Durable color-coordinated end caps for finished look.
<b>Fascia</b> .....	Extruded aluminum fascia by Rollease (3" or 4") as required. "L" shape covers front and bottom of roller shade tube.
<b>Side Channels</b> .....	Used for maximum light blockage when required. This eliminates the light gap on each side of shade. Extruded aluminum channels, 2 1/2" wide on each side with weather stripping brush to block light.

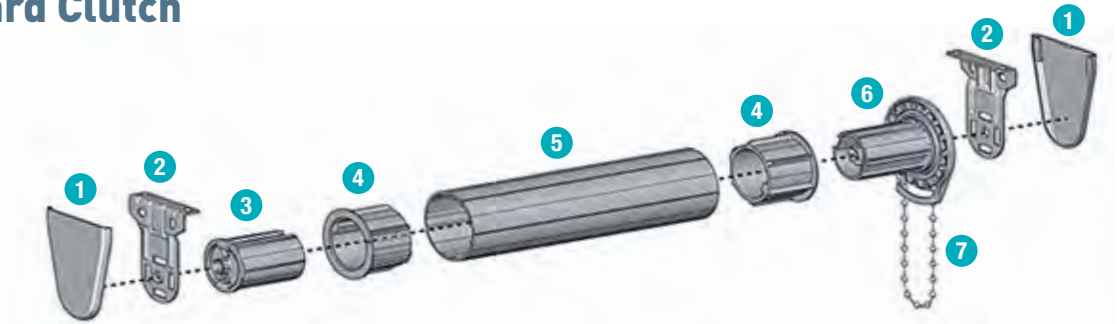
*Custom selection of components available upon request.*



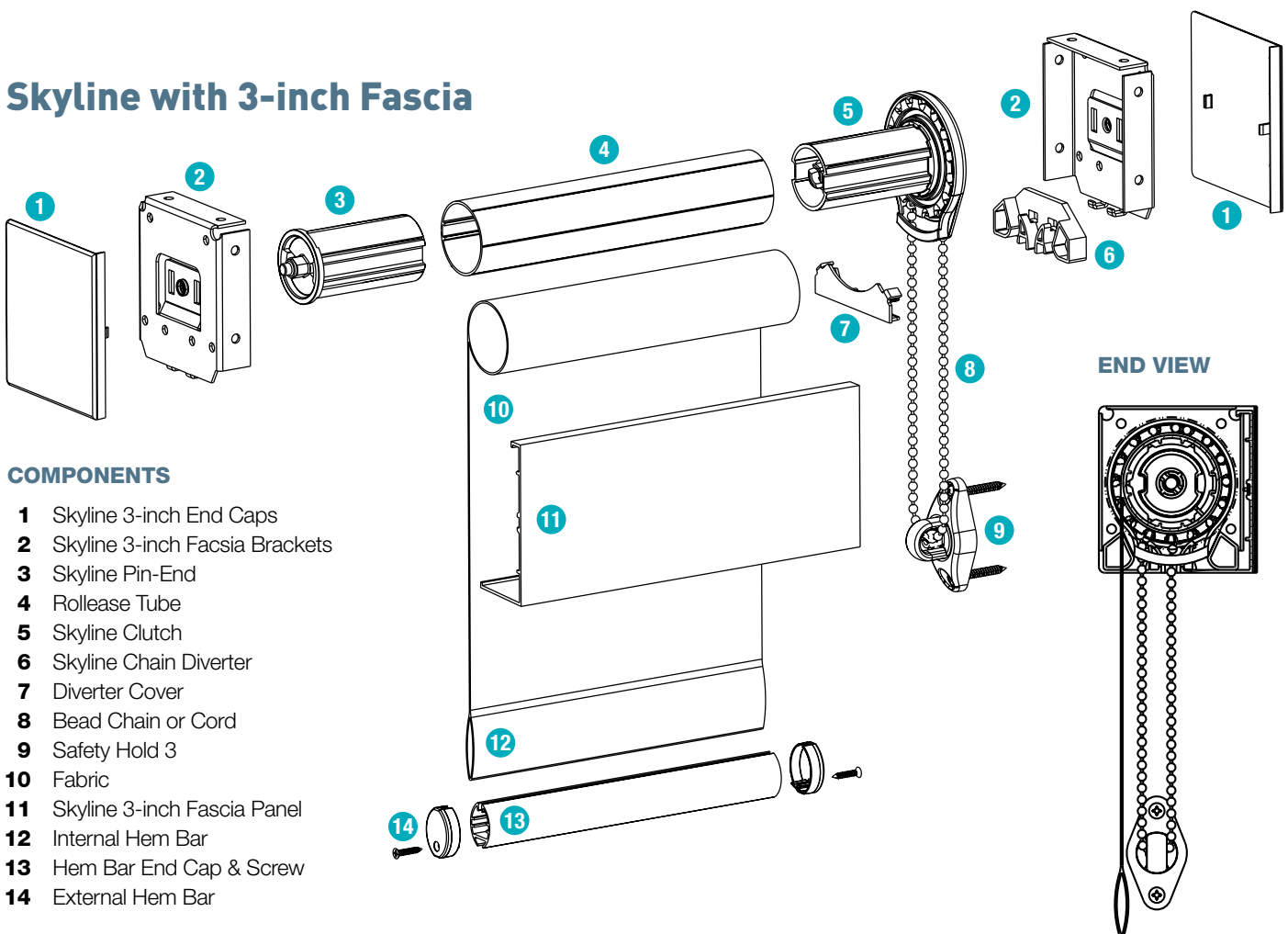
## Skyline Standard Clutch

### COMPONENTS

- 1 Skyline Bracket Covers
- 2 Skyline Brackets
- 3 Skyline Pin-End
- 4 Tube Plugs
- 5 Rollease Tube
- 6 Skyline Clutch
- 7 Beaded Chain



## Skyline with 3-inch Fascia



### COMPONENTS

- 1 Skyline 3-inch End Caps
- 2 Skyline 3-inch Fascia Brackets
- 3 Skyline Pin-End
- 4 Rollease Tube
- 5 Skyline Clutch
- 6 Skyline Chain Diverter
- 7 Diverter Cover
- 8 Bead Chain or Cord
- 9 Safety Hold 3
- 10 Fabric
- 11 Skyline 3-inch Fascia Panel
- 12 Internal Hem Bar
- 13 Hem Bar End Cap & Screw
- 14 External Hem Bar

# Rollease Acmeda Hardware

# SONIC BLINDS

CORDLESS ROLLER SHADES



## Cordless Bottom-Up Shade

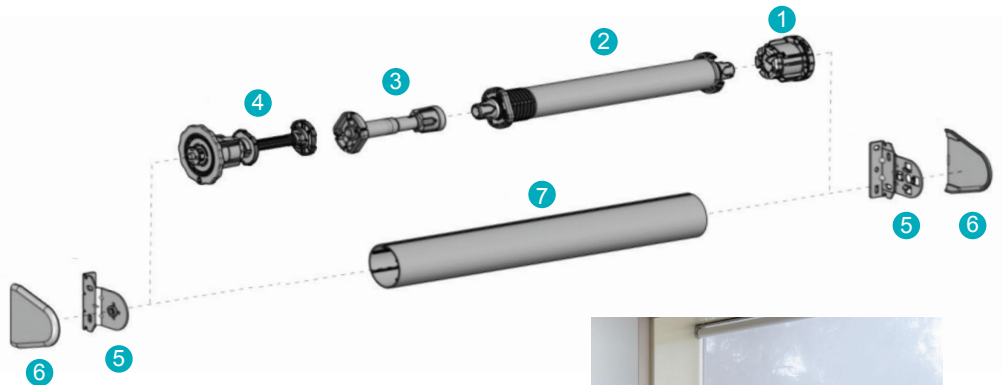
**Superior Performance,  
Child and Pet Safe, Sleek,  
Clean appearance**

Our cordless roller shades eliminate concerns about safety and aesthetics often associated with a dangling cord, and comply with WCMA/ANSI standards, making this roller shade option safe for both children and pets.

## Features:

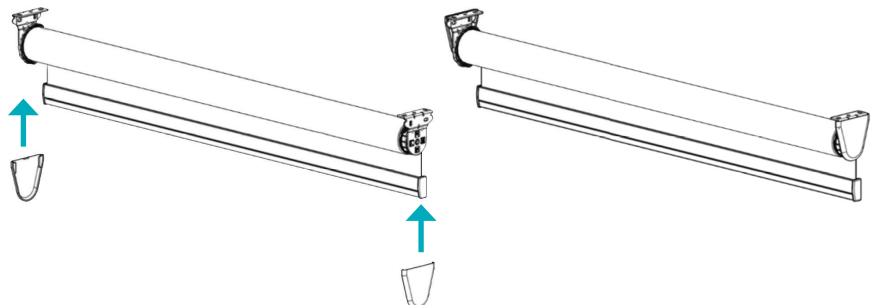
- Rollease® Cordless Ultra shades are the latest generation of safe, cordless shades.
- No cords, chain loops, or other hazardous controls.
- Complies with the most current safety regulations.
- Dampener allows shade to raise in a slow, controlled manner.
- Spring will not snap up like old systems.
- Upper limit control will stop the shade each time at the pre-set upper limit for convenience.

## Easy Spring Ultra System



### COMPONENTS

- 1 Spring Control
- 2 Booster Universal
- 3 Booster Decelerator
- 4 Limiter - Single Stop
- 5 Skyline STD Bracket - Single Stop Limiter
- 6 Bracket Cover
- 7 Rollease® Tube and M/P Tape



## Fascia

Extruded aluminum construction by Rollease (3" or 4") as required. "L" shape covers front and bottom of roller shade tube.



White



Vanilla



Bronze



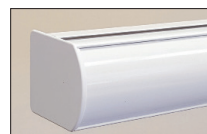
Black



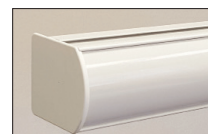
Anodized

## Cassettes

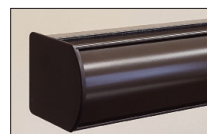
Sleek, curved design in extruded aluminum conceals shade hardware. Light weight for easy installation. Durable color-coordinated end caps for finished look.



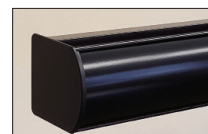
White



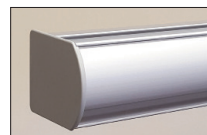
Vanilla



Bronze



Black



Anodized

## Open Roll

Modern, minimalist look shows the fabric on the roller shade tube. Brackets can either be visible or dressed up with a choice of bracket covers.



### End Caps

White



Black



Vanilla



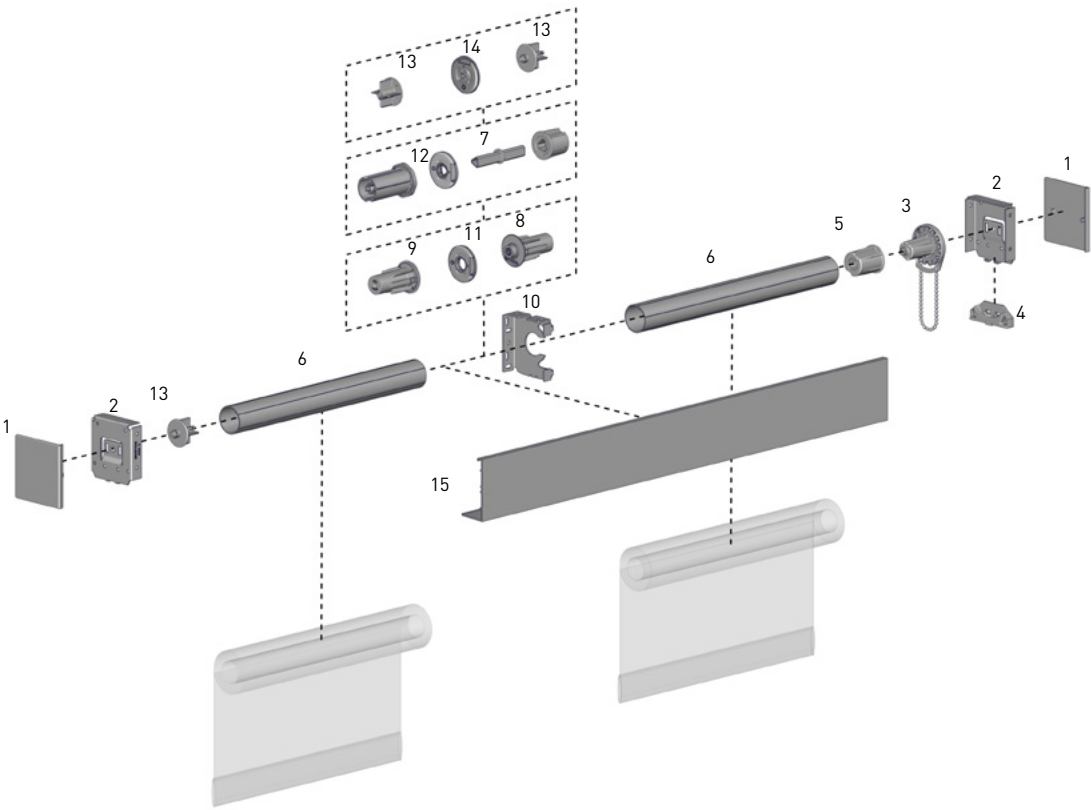
Gray





FASCIA 3" SKYLINE LINKED SYSTEM

The 3" Fascia offers a decorative cover which can be added to our popular roller systems, providing an elegant semi open fascia to hide top roller mechanisms. The link bracket enables using one motor for two different shades and to cover the shades with one nice continues fascia extrusion without seam between the shades. Sharing a control also means smaller costs per fascia system and simultaneous operation of two shades.



SYSTEM INDEX

1	3" SKYLINE SQUARE END CAP
	SLSECxx
2	3" SKYLINE FASCIA BRACKET
	SLFBKT3xx
3	CHAIN CONTROL
	Refer to system Product Specifications Manual
4	SKYLINE CHAIN DIVERTER
	Refer to system Product Specifications Manual
5	ADAPTER
	SLA53xx
6	1.5" TUBE
	RTEA4T16
7	INFINITE ADJUSTER KIT
	LSADJKITxx
8	MEDIUM EASY-LINK SYSTEM FEMALE DRIVE
	RB41-1001-xxx038
9	MEDIUM EASY-LINK SYSTEM MALE DRIVE
	RB41-1002-xxx038
10	3" SKYLINE FASCIA LINK BRACKET
	RB41-0331-020075
11	MEDIUM EASY-LINK BRACKET BEARING
	RB41-0502-xxx000
12	MEDIUM EASY-LINK BRACKET BEARING BRACKET DISK + BEARING
	RB41-0501-xxx000
13	SKYLINE PIN END   38MM
	SLPEV653xx
14	MEDIUM LINK DISC PIN TO PIN
	RB41-0503-xxx000
15	SKYLINE SQUARE FASCIA
	SLSFx16

xxx = COLOUR, LLL = LENGTH

CONTROL OPTIONS

CHAIN CONTROL



MOTORIZED



COLOUR RANGE



white



vanilla



anodized



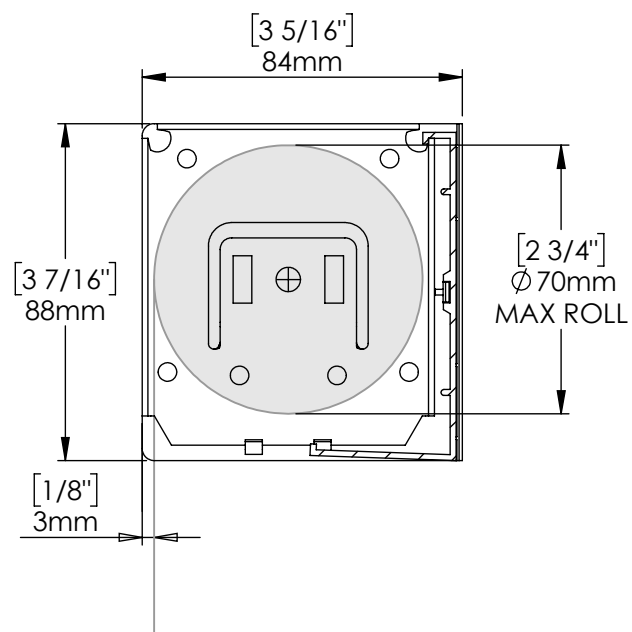
black



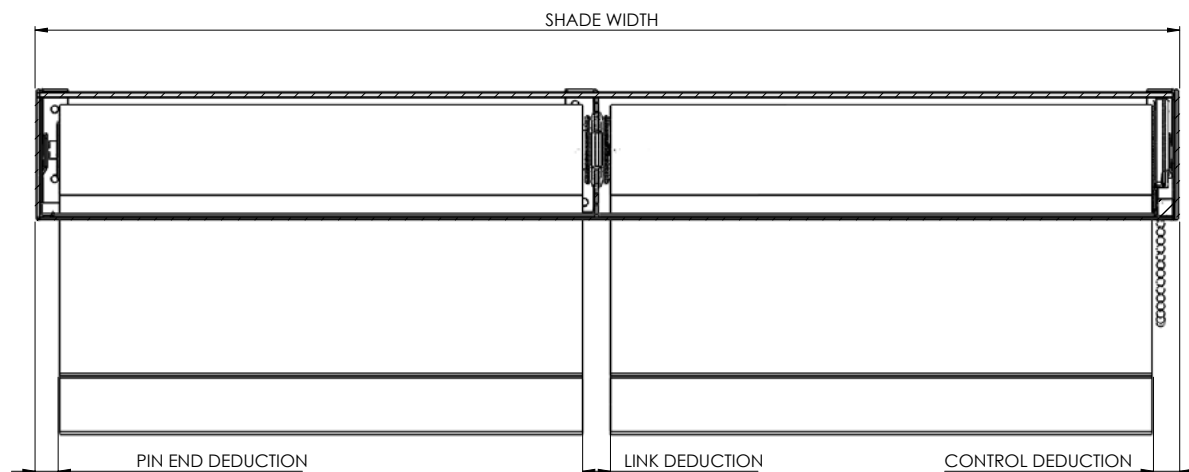
bronze

## SPECIFICATIONS

## MAX ROLL



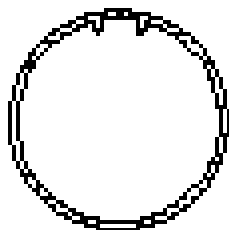
## DEDUCTION



LINK SYSTEM	DEDUCTION
EASY-LINK	17mm [11/16"]
SKYLINE EASY-LINK	19mm [3/4"]
INFINITE LINK	18mm [11/16"]

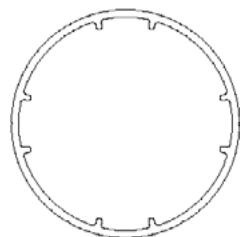
Note: Refer to Skyline Fascia 3" Product Specification manual for pin end and control end deductions.

## TUBE SPECS

**1-1/2" Tube**

With tape

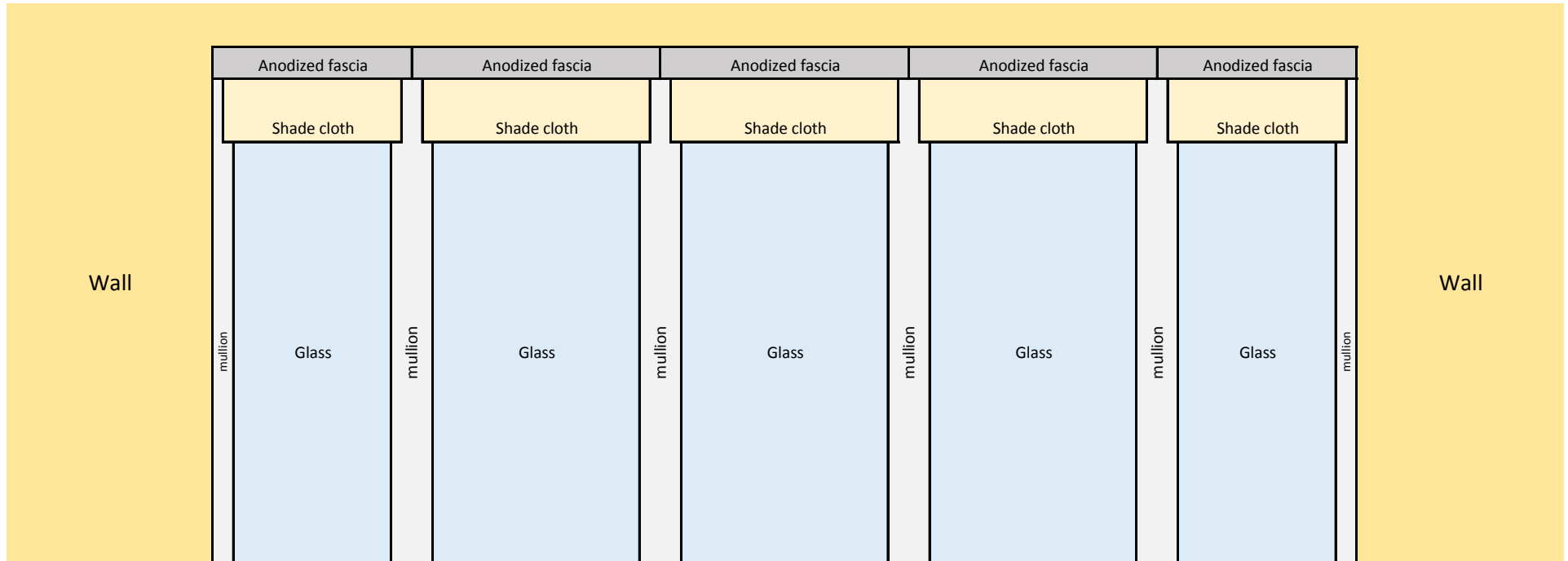
CODE: RTEA4TXX  
OD: 38mm [1-1/2"]

**2" Tube**

With tape

CODE: RTEA5TXX  
OD: 51mm [2"]

## Shop Drawing: Elevation 5 Panel Window



### Notes:

Opening Depth = 3". Fascia dimensions = 3" x 3". Shade and fascia will be recessed into wall.

Shades and fascia butt together at center of each mullion

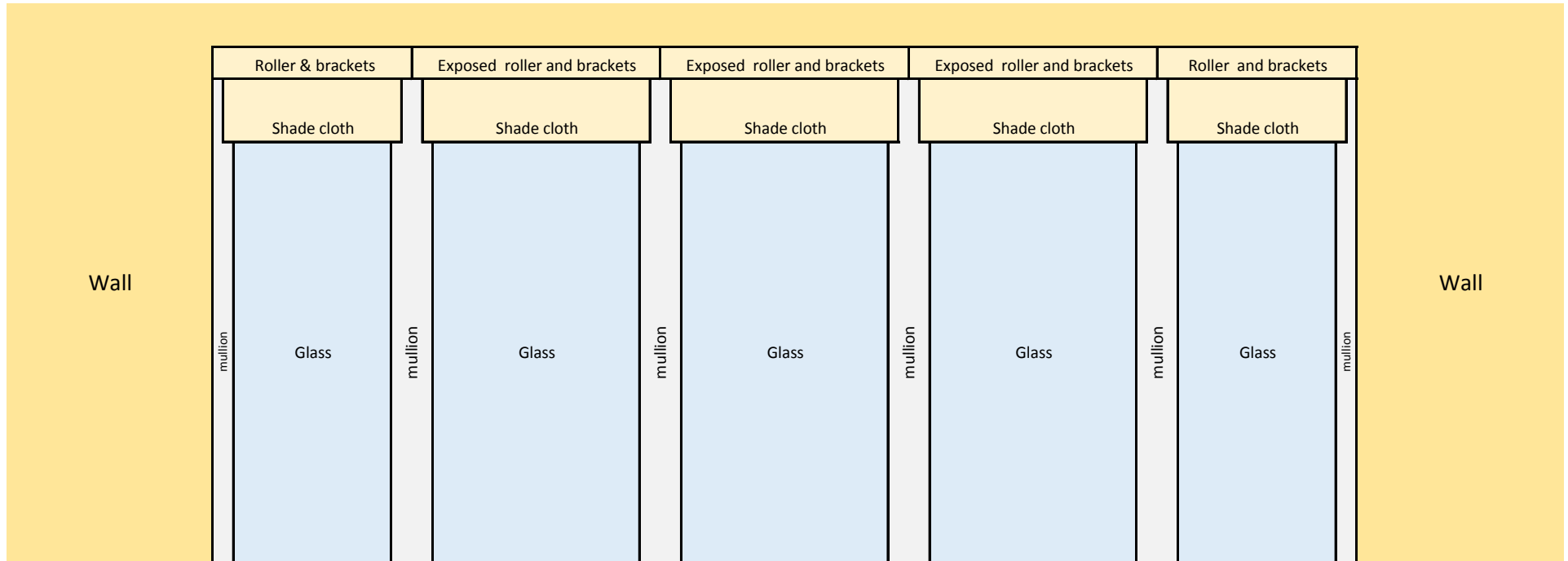
Use one shade per glass panel. No seams or battens needed.

Shade cloth is approximately 1" to 1.25" narrower than shade width to accommodate hardware

Shade cloth will overlap mullions and will not expose glass



## Shop Drawing: Elevation 5 Panel Window



Notes:

Opening Depth = 3"

Shades butt together at center of each mullion

Use one shade per glass panel. No seams or battens needed.

Shade cloth is approximately 1" to 1.25" narrower than shade width to accommodate hardware

Shade cloth will overlap mullions and will not expose glass

# 3000 NET

## SUNSHADOW SOLAR SCREEN



### 3000 NET by Alkenz

Alkenz SunShadow® Solar Screen fabrics offer a stylish and modern aesthetic for window treatments that minimize the negative effects of the sun, while preserving outward visibility.

3000 NET is the most widely used screen due to its 2x2 lightweight basket weave which offers ease of fabrication and versatility.

### FEATURES

- A unique manufacturing process delivers technically superior fabrics that are backed by a limited lifetime warranty.
- Environmentally friendly and safe
- Flame Retardant
- Available in four openness factors - 1%, 3%, 5%, 10%
- Available in 13 colors
- Versatile – can be used in roller shades and panel track applications

Leading innovator of precision hardware and automated shade solutions.  
USA | AUSTRALIA | EUROPE [rolleaseacmeda.com](http://rolleaseacmeda.com)

© Rollease Acmeda Inc



**ROLLEASE  
ACMEDA**  
PRECISION IN MOTION

The most widely used screen comes in 4 openness factors to suit any room.

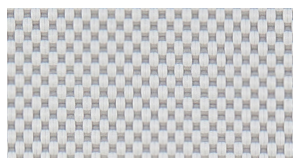
## Colors



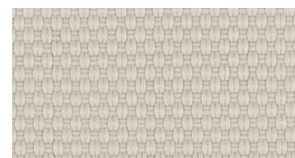
WHITE/WHITE



WHITE/BEIGE



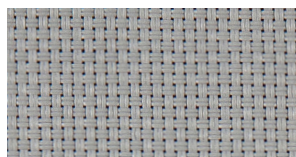
WHITE/GRAY



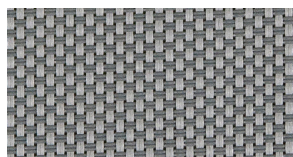
BEIGE/BEIGE



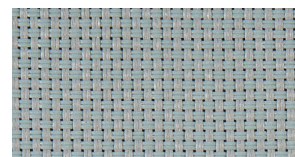
BEIGE/GRAY



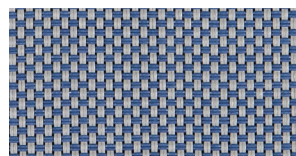
GRAY/GRAY



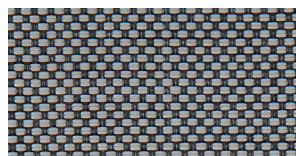
GRAY/DARK GRAY



GRAY/BLUE GRAY



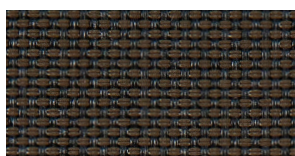
GRAY/BLUE



CHARCOAL/GRAY



BRONZE/BRONZE



CHARCOAL/BRONZE



CHARCOAL/CHARCOAL

SPECIFICATIONS	3000 NET 1%	3000 NET 3%	3000 NET 5%	3000 NET 10%
Composition	25% Polyester, 75% PVC	25% Polyester, 75% PVC	25% Polyester, 75% PVC	25% Polyester, 75% PVC
Weight	15.28 oz/yd2 [518 g/m2]	13.12 oz/yd2 [445 g/m2]	12.39 oz/yd2 [420 g/m2]	11.36 oz/yd2 [385 g/m2]
Thickness	0.026 in (.66mm)	0.022 in (.55mm)	0.022 in (.55mm)	0.020 in (.50mm)
Width	78.7" (2m), 98.4" (2.5m), 118" (3m)	78.7" (2m), 98.4" (2.5m), 118" (3m)	78.7" (2m), 98.4" (2.5m), 118" (3m)	78.7" (2m), 98.4" (2.5m), 118" (3m)
Average roll length	33 yd (30m)	33 yd (30m)	33 yd (30m)	33 yd (30m)
Fire Classification	NFPA 701, M1, B2, B1	NFPA 701, M1, B2, B1	NFPA 701, M1, B2, B1	NFPA 701, M1, B2, B1
Environmental standards	Oeko-Tex Standard 100, ISO 14001, ISO 9001, Greenguard	Oeko-Tex Standard 100, ISO 14001, ISO 9001, Greenguard	Oeko-Tex Standard 100, ISO 14001, ISO 9001, Greenguard	Oeko-Tex Standard 100, ISO 14001, ISO 9001, Greenguard

\*For complete technical information, current test results, performance specifications, and samples, please contact our marketing department.



Leading innovator of precision hardware and automated shade solutions.  
USA | AUSTRALIA | EUROPE [rolleaseacmeda.com](http://rolleaseacmeda.com)

© Rollease Acmeda Inc



**ROLLEASE  
ACMEDA**  
PRECISION IN MOTION



# 3000 HT

## SUNSHADOW SOLAR SCREEN



### 3000 HT by Alkenz

Alkenz SunShadow® Solar Screen fabrics offer a stylish and modern aesthetic for window treatments that minimize the negative effects of the sun, while preserving outward visibility.

3000 HT's broken twill offers customers a solution where white is always facing out, giving the fabric superior reflective properties regardless of the color facing the room.

### FEATURES

- A unique manufacturing process delivers technically superior fabrics that are backed by a limited lifetime warranty
- Color independent solution
- Environmentally friendly and safe
- Flame Retardant
- Available in two openness factors - 3%, 5%
- Available in 6 colors
- Versatile – can be used in roller shades and panel track applications

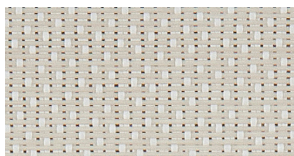


With a lighter colored backing, 3000 HT optimizes solar reflectance and provides exterior color uniformity.

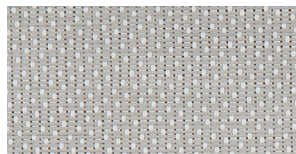
## Colors



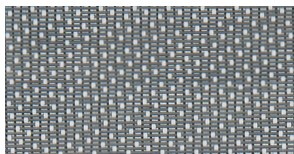
WHITE/WHITE



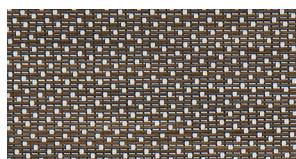
WHITE/BEIGE



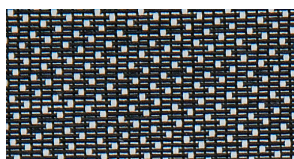
WHITE/LIGHT GRAY



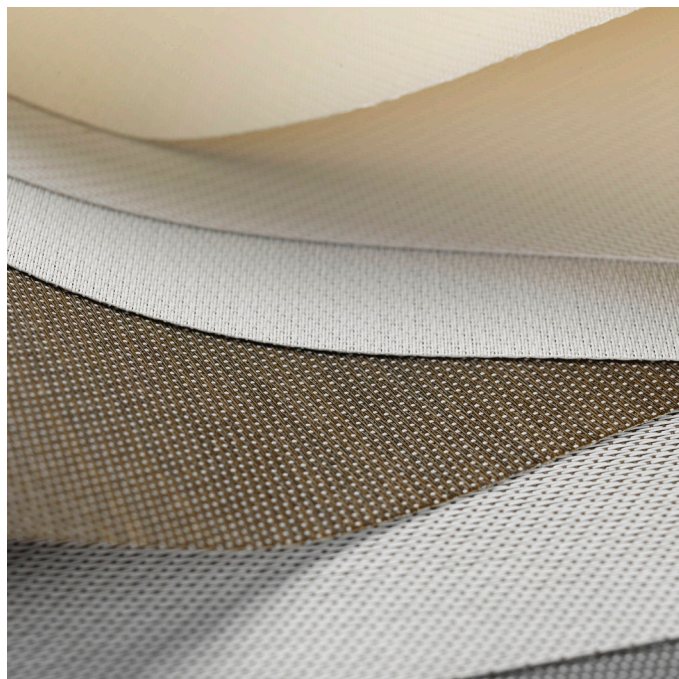
WHITE/DIM GRAY



WHITE/BRONZE



WHITE/CHARCOAL



SPECIFICATIONS	3000 HT 3%	3000 HT 5%
Composition	25% Polyester, 75% PVC	25% Polyester, 75% PVC
Weight	12.24oz/yd2 (415 g/m2)	11.65oz/yd2 (395 g/m2)
Thickness	0.024 in (.60mm)	0.026 in (.66mm)
Width	98.4" (2.5m)	98.4" (2.5m)
Average roll length	33 yd (30m)	33 yd (30m)
Fire Classification	NFPA 701, M1, B2, B1, CA Title 19	NFPA 701, M1, B2, B1, CA Title 19
Environmental standards	Oeko-Tex Standard 100, ISO 14001, ISO 9001, Greenguard	Oeko-Tex Standard 100, ISO 14001, ISO 9001, Greenguard

\*For complete technical information, current test results, performance specifications, and samples, please contact our marketing department.



Leading innovator of precision hardware and automated shade solutions.  
USA | AUSTRALIA | EUROPE [rolleaseacmeda.com](http://rolleaseacmeda.com)

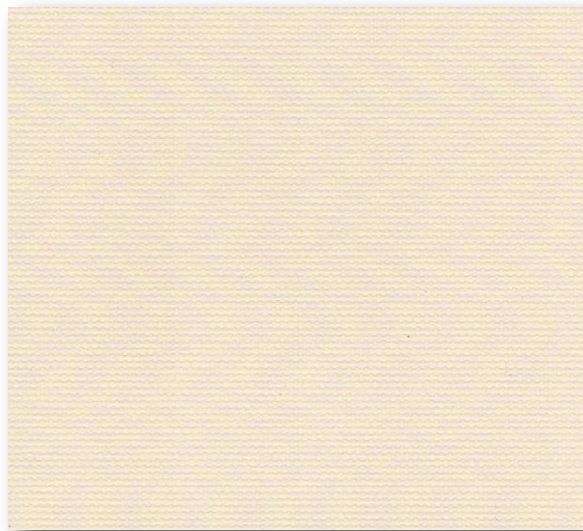
© Rollease Acmeda Inc



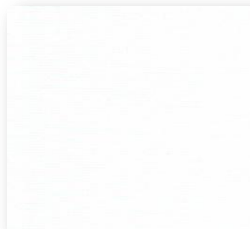
**ROLLEASE  
ACMEDA**  
PRECISION IN MOTION



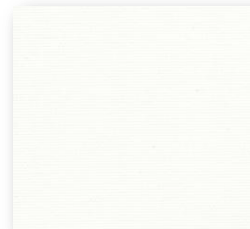
# DARKSOURCE



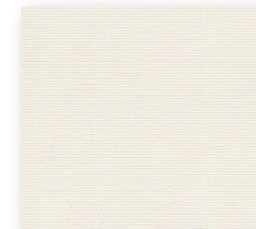
Champagne



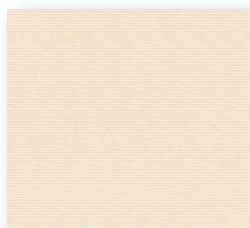
White



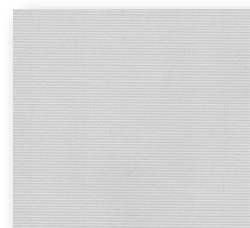
Linen



Fawn



Champagne



Grey



Black

Darksourc is a classic vinyl blackout. Easiest to clean and maintain. A vinyl blackout composed of fiberglass and PVC.

**Widths:** 72 inches, 96 inches, 108 inches for White, Linen, Fawn, Champagne, and Grey. 72 inches and 118 inches for Black only.

**Roll Sizes (WxL):** 72 inches x 30 yards, 96 inches x 30 yards, 108 inches x 30 yards, 118" x 30 yards

**Fire Retardant:** NFPA 701

**Weave:** Plain

**Openness Factor:** 0%

**Composition:** PVC Laminated Fiberglass

**Thickness:** 0.35 mm  $\pm$  0.01

**Weight:** 450 gsm  $\pm$  10 g

**Cutting:** Ultrasonic, Crush, Cold

**Welding/Bonding Tape:** No

**Railroading:** Not recommended and subject to testing.

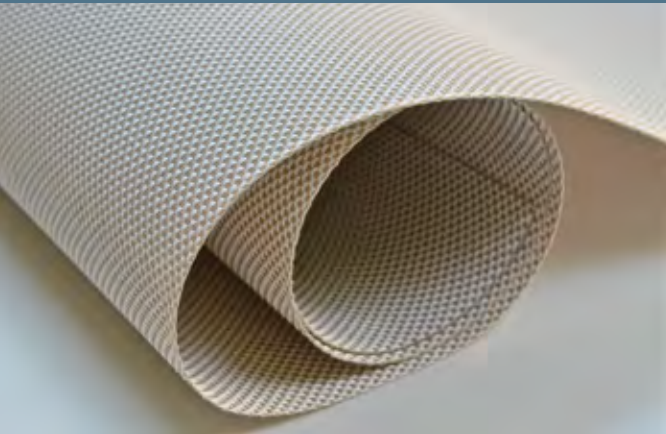
Color variances may occur between fabric production batches. These variances are within industry tolerances, kindly check fabric prior to cutting.

**Care & Cleaning Instructions:** Clean with warm water. Material can be washed on both sides with mild 5% detergent solution.



# Cutting-Edge Technology

**Seal-n-SPLIT**  
by Sonic Blinds®



## Seal-n-SPLIT Difference



**Raw Cut – No Sealed Edges**



**Conventional Fabric Edge Sealing**



**Seal-n-SPLIT Fabric Edge Sealing**

## The Problem

Solar shade fabrics have gained popularity for the sun and glare protection they provide while still allowing a view outdoors.

However, with traditional fabrication, the edges of the shade are left unfinished. Hemming is not possible since this would prevent the fabric from rolling up properly onto the tube.

The problem with an unfinished edge is that it frays, and the fraying only increases with use. Unsightly frayed edges detract from the finished appearance of a roller shade. Over time, increased fraying will hamper the ability of the fabric to properly roll onto the tube.

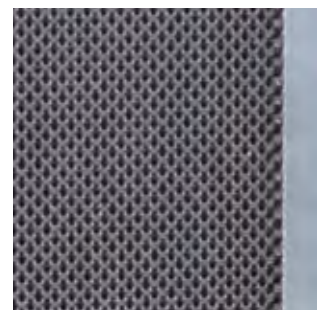
Attempts to seal the edge with conventional methods create a wide, solid seal along each edge that compromises the aesthetics of a shade.

## The Seal-n-SPLIT Solution

To solve this problem of frayed edges on solar shade fabrics, Sonic Blinds has developed a patented process that seals and cuts the fabric in a single operation.

The fabric is heated to 800-1000° F along the edge to be cut. A wheel then compresses and seals a line in the fabric followed by an ultrasonic cutter. The seal is split in half lengthwise to create two perfectly sealed edges. This allows a melted, sealed edge that is only 1-2 mm wide (less than 1/16" of an inch).

- Heat-sealed edges eliminate fraying.
- The micro-sealed edges preserve the shade's clear view & aesthetics.
- The Seal-n-Split process eliminates the need for crude, wide seals that create vertical opaque stripes along shade edges.

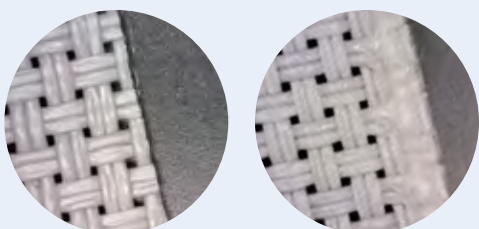


# Sonic Blinds Exclusive Feature

**Seal-n-SPLIT**  
by Sonic Blinds®

## A Closer Look

The Seal-n-SPLIT difference is clearly visible under a microscope.



*Unsealed Edge      Seal-n-SPLIT Edge*

## Informative Video

Scan QR code with a smartphone or tablet and view a 90-second video describing in detail the Seal-n-SPLIT patented process.



**Scan to  
view video**



***The Seal-n-SPLIT edge gives shades a cleaner look, and superior, long-lasting performance.***

\* The Seal-n-SPLIT process is not recommended for Phifer or Mermet fabrics, due to the nature of their fabric composition.

## Get The Edge

**on Solar Roller Shades with our exclusive, patented Seal-n-SPLIT fabrication process**

### Fabrics

The Seal-n-SPLIT patented process is exclusively available for Alkenz fabrics. These fabrics have the proper content to produce the Seal-n-SPLIT with a beautiful micro-beaded edge. Seal-n-SPLIT is not available for Phifer or Mermet fabrics.

### Hardware

Sonic Blinds uses genuine Rollease clutches, tubes, and parts for all manual shade fabrication. Rollease is the industry standard and the primary provider of components for most of the world's leading manufacturers.

### Motorization

Somfy and Automate motors are used for motorized products fabricated by Sonic Blinds. Somfy is the largest manufacturer of shade motors, with over 150 million in service worldwide.

### Benefits

- The Seal-n-SPLIT process creates a perfectly crisp, sealed edge that completely eliminates fraying, inherent to solar fabric shades.
- There are no unsightly wide melted edges as with conventional cutting methods.
- Seal-n-SPLIT offers an economical way to keep shades looking clean, beautiful and enduring.
- Seal-n-SPLIT shades will continue to roll up and down as evenly as the day they were installed.

---

*The Seal-n-SPLIT process is currently available only from Sonic Blinds, Buffalo, New York.*

*For inquiries regarding the licensing of the Seal-n-SPLIT process, please call Sonic Blinds at 716-923-7617.*



2890 Niagara Falls Blvd  
Buffalo, NY, 14228  
(716)831-8600  
FAX (716)831-9749

Thank you for your interest in Sonic Blinds, Inc. We have specialized in installing, servicing, and manufacturing window treatments for over 25 years. Sonic Blinds, Inc. is the only **full-scale manufacturer** of blinds in the Buffalo area. We currently fabricate roller shades, mini binds, vertical blinds, wood blinds and cellular shades in our 13,000 square foot facility in Buffalo.

By controlling the manufacturing process from start to finish, we can offer **rapid delivery and the best pricing** to keep your projects **on time and under budget**. This also allows us to make same-day adjustments to avoid problems and delays on the job site. In the event of an emergency, we can often provide next day and even same-day installation/service. The following is a list of customers who have relied upon us to provide them with superior custom made products installed by our own installation team.

**Universities and Schools:**

Canisius College  
SUNY at Oswego  
Daemen College  
Sweet Home Central Schools  
Williamsville Schools  
Nardin Academy  
Niagara University  
Cleveland Hill Schools  
Lakeshore Central Schools  
SUNY at Buffalo  
Villa Maria College  
Elmwood Franklin School  
Dorm Authority NYS  
Tapestry Charter School

**Government & town offices:**

Buffalo City Hall  
Buffalo Niagara Conv Center  
Buffalo Municipal Housing  
FBI  
US Postal Service  
The New Federal Courthouse

**Builders & Developers:**

Ciminelli Decelopment Co.  
Ellicott Square Development  
Natale Builders  
RP Oak Hill Building Co.  
Sinatra & Company  
Uniland Development Co.  
Zaepfel Development

**Local Businesses:**

Ted's Hot Dogs  
Erie 1 Boces  
Doodlebugs  
Catholic Health System  
Geico  
Fox Valley Country Club  
M&T Bank  
Citigroup  
The Buffalo News  
Horizon Health Services  
The Avant Building  
The Delaware North Building  
Ingram Micro  
Wurlitzer Building

We take pride in customer satisfaction and carry an A+ rating from the Better Business Bureau. We look forward to working with you. Please give us a call if you have any questions.

Sincerely,

Mike Lin  
President