

ADDENDUM NO. 1

PROJECT: OLV Human Services
Rev-Up! Renovations

CPL PROJECT NO. 16128.00

DATE: April 28, 2022

Include this Addendum as part of the Contract Documents, which were issued April 19, 2022. It supplements portions of the original specifications and drawings, the extent of which shall remain, except as revised herein:

PREBID MEETING NOTES

1. Meeting attendance sign-in sheet is attached.
2. The Owner's forces are constructing various parts of the project scope. See the drawings, including the notes for description of what is in the Owner's scope and what should be included in the bidders' scope. The awarded bidder will be expected to coordinate schedule and construction with the Owner's superintendent.
3. Flooring within the Owner's scope will not be installed until the punchlist is complete.
4. Building Permit Fee will be paid by Owner. All other fees required for permits remain contractor's responsibility. The bid includes a \$30,000 allowance to cover the National Grid fees for the new electrical service.
5. Abatement of asbestos bearing flooring is in Owner's scope. All other abatement of known hazardous material is contractor's responsibility. Refer to Dwg. A100 Hazardous Material Abatement Plan and Notes and Vincent Cottage Limited Hazardous Material Pre-Renovation Survey Report included in Project Manual.
6. Note that fluorescent light bulbs and light ballasts listed in Table 4, page 6 of the Vincent Cottage Limited Hazardous Material Pre-Renovation Survey Report have been replaced with non-hazardous bulbs and ballasts.
7. There is adequate parking for contractor staff and subs located on both sides of the building.
8. Staging can occur in the parking lot to the West of the building. A ramp from this parking lot leads into the gym which is available for material storage.
9. The Owner hopes to occupy the building in October of 2022, however, the schedule will be developed by the contractor in coordination with the Owner, once delivery times are known.



REVISIONS TO THE SPECIFICATIONS:

SECTION 012300 – Alternates

- **Replace** this section with the attached revised section.
- Revision: inclusion of Door 3 in Alternate 5.

SECTION 067300 – Composite Decking

- **Add** the attached section to the Project Manual.

SECTION 068000 – Composite Fabrications

- **Add** the attached section to the Project Manual.

SECTION 102800 – Toilet, Bath and Shower Accessories

- **Add** the attached section to the Project Manual.

REVISIONS TO THE DRAWINGS

C 000 – SURVEY

- **Add** the attached survey to the Bid Document Set.

C 103 – RAMP ELEVATIONS AND SECTIONS

- **Add** the attached drawing to the Bid Document Set.

A 101 – FIRST FLOOR DEMOLITION PLAN, ENLARGED TOILET ROOM DEMOLITION PLAN AND NOTES

- **Refer** to Mech. Closet Rm. 03 and delete note W1 that calls for the existing partitions to be demolished. Existing partitions enclosing Mech. Closet 03 shall remain.

A 200 – FIRST FLOOR PLAN, PARTITION INFORMATION AND NOTES

- **Replace** drawing in its entirety, with the attached revised drawing.
- Revisions include changes to partition types.

A 800 – TYPICAL DETAILS

- **Replace** drawing in its entirety, with the attached revised drawing.
- Revisions include addition of acoustic partition type F3ik.

A 900 – DOOR AND GLAZING TYPES WITH DOOR SCHEDULE

- **Add** attached Door Hardware Types.



I 000 – INTERIORS GENERAL

- **REFER** to Interior Finish Schedule- Tile-Wall: TW-1, TW-2, TW-3 and change size to 4” x 8”.

I 200 – FINISH FLOOR PLAN

- **REFER** to Gymnasium finish tag and replace PT-3 with PT-5..

E 201 – FIRST FLOOR POWER AND SYSTEMS PLAN

- **Replace** drawing in its entirety, with the attached revised drawing.
- Revisions include change in General Note G reference from accessible ceilings for hard ceilings.

END OF ADDENDUM NO. 1

S:\Projects\BVS\Rev-up Grant Drawings\B Bidding\Bid Documents\Addendum 1\Rev-Up Add 1 Narrative - DRAFT.doc

Meeting Attendance List

DATE: 4.26.22

PAGE 1 OF

SUBJECT: OLY REV. VP RENOVATIONS
PRE-BID

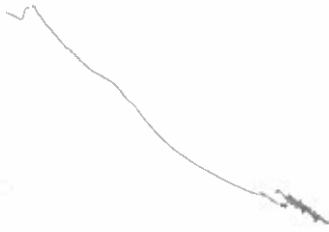
- MEETING TYPE:
- PUBLIC
 - GET START
 - CONSULTANT
 - SCOPING
 - PRE-CONSTRUCTION
 - OTHER

Name	Representing	Email Address	Phone #
NICHELLE EZZO	CPL	mezzoc@CPLTEAM.COM	716-220-2192
Philip Casillo	CSQ	philc@casilloco.com	716-333-4308
MITCHELL LATUCA	EBD	MITCHELL@EBDINC.COM	716-685-4588
CHRIS BERN	WOODOLIG BARR	chad@woodoligbarr.com	716-824-3012
Chris Boyd	PERSEPOLIS	chris@PERSEPOLIS.COM	716-543-2801
Andrew Rodder	TIP-2 Mechanical	Andrew.Rodder@tip2mechanical.com	716-674-0502
Stephen Reinhardt	Huges Construction	Steve@Hugesbill.com	916-768-0195
Carico D. Lerner	RED INC.	lerner@redjmy.com	716-294-3366
Jim Milks	TALCO CONST.	Jim@talcoconstruction.com	716-875-1520
R. Scott Rowan	TADI, INC.	rowan@tamogreen.net.us	716-799-2972
JOSUE VASQUEZ	SAVEN CONSTRUCTION	JOSUE@SAVEN.COM	716-598-7676
Juliana Purn	Picave Construction	mmunoz@picaveconstruction.com	716-634-0994

Alex Lombard IPL

alombard@iplcorp.com

716-544-5786



**SECTION 012300
ALTERNATES**

PART 1 GENERAL

1.1 SUMMARY

- A. Section includes administrative and procedural requirements for alternates.

1.2 DEFINITIONS

- A. Alternate: An amount proposed by bidders and stated on the Bid Form for certain work defined in the Bidding Requirements that may be added to or deducted from the base bid amount if Owner decides to accept a corresponding change either in the amount of construction to be completed or in the products, materials, equipment, systems, or installation methods described in the Contract Documents.
1. Alternates described in this Section are part of the Work only if enumerated in the Agreement.
 2. The cost or credit for each alternate is the net addition to or deduction from the Contract Sum to incorporate alternate into the Work. No other adjustments are made to the Contract Sum.

1.3 PROCEDURES

- A. Coordination: Modify or adjust affected adjacent work as necessary to completely integrate work of the alternate into Project.
1. Include as part of each alternate miscellaneous devices, accessory objects, and similar items incidental to or required for a complete installation whether or not indicated as part of alternate.
- B. Notification: Immediately following award of the Contract, notify each party involved, in writing, of the status of each alternate. Indicate if alternates have been accepted, rejected, or deferred for later consideration. Include a complete description of negotiated modifications to alternates.
- C. Execute accepted alternates under the same conditions as other work of the Contract.

PART 2 PRODUCTS (NOT APPLICABLE)

PART 3 EXECUTION

3.1 SCHEDULE OF ALTERNATES

A. ALL TRADES:

1. **Alternate No. -1: Storage cabinets and sink.**
 - a. **Base Bid:** No wall cabinets in Yoga/ Dance Studio Rm. 2 as indicated on Sheet A200, First Floor Plan, Interior Elevation 12. No wall and base cabinets and sink in Maker Space Rm. 25 as indicated on Sheet A200, First Floor Plan, Interior Elevation 6 and Sheet P301, First Floor Domestic Piping Plan.
 - b. **Alternate: Add** wall cabinets in Yoga/ Dance Studio Rm. 2 as indicated on Sheet A200, First Floor Plan, Interior Elevation 12. **Add** wall and base cabinets and sink in Maker Space Rm. 25 as indicated on Sheet A200, First Floor Plan, Interior Elevation 6 and Sheet P301, First Floor Domestic Piping Plan.
2. **Alternate No. -2: Replace wood paneling.**
 - a. **Base Bid:** Existing wood paneling on exterior walls of Yoga/Dance Studio Rm. 2, Closet 4, Staff Office 28 and Staff Office 29 to remain.
 - b. **Alternate:** Existing wood paneling, furring and insulation on exterior walls of Yoga/Dance Studio Rm. 2, Closet 4, Staff Office 28 and Staff Office 29 to be removed and replaced with Partition Type F2i as shown on Sheet A800. Trim at windows with J-mold. Provide extensions and rework all existing outlets and devices mounted on exterior walls.

Paint drywall and install new rubber base as scheduled on Sheets I000 and I200.

3. **Alternate No. -3: Finned Tube Enclosures.**

- a. **Base Bid:** Existing Covers to remain in Rooms where no alteration is required.
- b. **Alternate:** Remove existing fin tube enclosures. Install new enclosures as indicated on Sheets H101 and H201.

4. **Alternate No. -4: Offices and Music Therapy .**

- a. **Base Bid:** No new flooring, base, paint, acoustic ceiling panels and light fixtures in existing Office 5, Music Therapy 9 and Staff Office 28, as indicated on Sheet A200, First Floor Plan,
- b. **Alternate:** Install new flooring, base, wall paint, acoustic ceiling panels and light fixtures in existing Office 5, Music Therapy 9 and Staff Office 28 as indicated on Sheet A200, A601, I000, I200 and E301.

5. **Alternate No. -5: Mechanical Closet 3**

- a. **Base Bid:** Existing enclosure partitions and doors for Mechanical Closet 3 to remain,
- b. **Alternate:** Demolish existing CMU Partitions. Install new partitions and doors as shown on Sheet A200. Paint doors and partitions as scheduled on Sheet I200.

~~END OF SECTION 012300 012300~~

**SECTION 067300
COMPOSITE DECKING**

PART 1 GENERAL

1.1 SECTION INCLUDES

- A. Plastic composite decking.

1.2 RELATED REQUIREMENTS

- A. Section 061603 - Miscellaneous Rough Carpentry.

1.3 DEFINITIONS

- A. Composite Materials: Materials made from two or more constituent materials with significantly different physical or chemical properties that, when combined, produce materials with characteristics different from the individual components.
- B. Plastic Composites, or Wood-Plastic Composites: Composite materials made primarily from wood- or cellulose-based materials and plastics.

1.4 REFERENCE STANDARDS

- A. ANSI A326.3 - American National Standard Test Method for Measuring Dynamic Coefficient of Friction of Hard Surface Flooring Materials 2021.
- B. ANSI/ACMA/PIC (CSP) - Code of Standard Practice, Industry Guidelines for Fabrication and Installation of Pultruded FRP Structures 2011 (Reapproved 2012).
- C. ASCE/ACMA (PS) - ASCE/ACMA Pre-Standard for Load & Resistance Design (LRFD) of Pultruded (FRP) Structures 2010.
- D. ASTM D7032 - Standard Specification for Establishing Performance Ratings for Wood-Plastic Composite and Plastic Lumber Deck Boards, Stair Treads, Guards, and Handrails 2021.
- E. ASTM E84 - Standard Test Method for Surface Burning Characteristics of Building Materials 2021a.
- F. ICC (IBC) - International Building Code Most Recent Edition Adopted by Authority Having Jurisdiction, Including All Applicable Amendments and Supplements.

1.5 ADMINISTRATIVE REQUIREMENTS

- A. See Section 017000 - Execution and Closeout Requirements for additional requirements relating to preinstallation meetings.
- B. Coordination: Coordinate installation of anchorages installed by others.
- C. Preinstallation Meeting: Conduct preinstallation meeting one week prior to start of work of this section; require attendance by affected installers.
 - 1. Review quality control requirements and anchorages by others.

1.6 SUBMITTALS

- A. See Section 013000 - Administrative Requirements for submittal procedures.
- B. Product Data: Manufacturer's published product literature:
 - 1. Include sizes and profiles; structural design data.
- C. Shop Drawings - Plastic Composite Decking: For each system; indicate:
 - 1. Plans and Sections: Include column centers, elevations, and dimensions, indicating locations of members and connections.
 - a. Drawing Scale: 1/4 inch to 1 foot, minimum.
 - 2. Details: Include deck framing, connections, anchorages, and bearing supports.
 - a. Drawing Scale: 1-1/2 inches to 1 foot, minimum.

- D. Samples: Submit color chips or samples, 2 inches by 2 inches in size, indicating specified texture and finish. Provide full range of standard colors.
- E. Contractor's Design-Related Professional Design Services:
 - 1. Design Calculations and Analysis Data:
 - a. Sufficient to demonstrate compliance with ASCE/ACMA (PS) and applicable building code; signed and sealed by Engineer of Record for design of composite decking systems.

1.7 QUALITY ASSURANCE

- A. Designer Qualifications: Perform design under direct supervision of Professional Structural Engineer experienced in design of this type of work.

1.8 DELIVERY, STORAGE, AND HANDLING

- A. Deliver materials to project site in original, unbroken packages, or bundles bearing label of manufacturer and component identification markings.
- B. Store materials under cover and elevated above grade.
- C. Package and label adhesives separately; store in dry, indoor facility.
- D. Protect decking units from damage including cracking or chipping.

1.9 WARRANTY

- A. See Section 017800 - Closeout Submittals for additional warranty requirements.
- B. Correct defective Work within five year period after Date of Substantial Completion.
- C. Provide manufacturer's standard limited warranty for products.
- D. Provide manufacturer's standard 25-year warranty against splintering, splitting, rot, and decay.

PART 2 PRODUCTS

2.1 PLASTIC COMPOSITE DECKING

- A. Manufacturers:
 - 1. Trex Company, Inc; Basis of Design: www.trex.com/#sle.
- B. Plastic Composite Decking: Extruded thermoplastic composite decking boards; for exterior applications where ICC (IBC) permits combustible construction; complying with ASTM D7032.
 - 1. Shell: Fully enclosed.
 - 2. Deck Board Size: 7/8 inch by 5-1/2 inches.
 - 3. Fascia Board Size: 3/4 inch by 5 1/2 inches.
 - 4. Board Edges: Radiused.
 - 5. Board Side Profile: Manufacturer's standard.
 - 6. Deck Board Slip Resistance - Dynamic Coefficient of Friction (DCOF) (Wet): Minimum of 0.42, when tested in accordance with ANSI A326.3.
 - 7. Finish: Manufacturer's standard finish; in compliance with specified slip resistance requirements.
 - 8. Color: To be selected by Architect from manufacturer's full range.
 - 9. Flame Spread Index: 200 or less when tested in accordance with ASTM E84.
- C. Fabrication:
 - 1. Provide labeling on deck boards or packaging indicating compliance with ASTM D7032; include labeling data indicating deck board span rating.
- D. Accessories:
 - 1. Manufacturer's standard fasteners and anchorage devices.

PART 3 EXECUTION

3.1 EXAMINATION - GENERAL

- A. Verify dimensions, tolerances, and interfaces with related work; verify location of supporting assemblies.
- B. Examine field conditions to confirm that building lines, grades, and elevations will allow proper installation of decking.
- C. Verify support work has been constructed to allow accurate placement and alignment of anchor bolts and other connections to supporting assemblies.
- D. Verify substrates to determine that conditions are acceptable for installation of decking in accordance with manufacturer's written instructions.

3.2 INSTALLATION - GENERAL

3.3 INSTALLATION - PLASTIC COMPOSITE DECKING

- A. Install decking in accordance with manufacturer's published instructions, subject to conditions of its evaluation report.

3.4 TOLERANCES

- A. Install decking complying with installation tolerances indicated in ANSI/ACMA/PIC (CSP).

3.5 CLEANING - COMPOSITE DECKING

- A. Clean composite decking complying with cleaning recommendations per manufacturer.

3.6 PROTECTION

- A. Protect installed decking from subsequent construction operations.

END OF SECTION 067300

This page intentionally left blank

**SECTION 068000
COMPOSITE FABRICATIONS**

PART 1 GENERAL

1.1 SECTION INCLUDES

- A. Guardrail systems.
- B. Handrails.

1.2 RELATED REQUIREMENTS

- A. Section 061063 - Miscellaneous Rough Carpentry for treated wood framing.
- B. Section 067300 - Composite Decking: Ramp deck.

1.3 REFERENCE STANDARDS

- A. ADA Standards - Americans with Disabilities Act (ADA) Standards for Accessible Design 2010.
- B. ANSI/ACMA/PIC (CSP) - Code of Standard Practice, Industry Guidelines for Fabrication and Installation of Pultruded FRP Structures 2011 (Reapproved 2012).
- C. ASCE 7 - Minimum Design Loads and Associated Criteria for Buildings and Other Structures Most Recent Edition Cited by Referring Code or Reference Standard.
- D. ASTM A666 - Standard Specification for Annealed or Cold-Worked Austenitic Stainless Steel Sheet, Strip, Plate, and Flat Bar 2015.
- E. ASTM D4385 - Standard Practice for Classifying Visual Defects in Thermosetting Reinforced Plastic Pultruded Products 2019.
- F. ASTM E84 - Standard Test Method for Surface Burning Characteristics of Building Materials 2021a.
- G. ASTM F594 - Standard Specification for Stainless Steel Nuts 2009 (Reapproved 2020).
- H. ICC A117.1 - Accessible and Usable Buildings and Facilities 2017.
- I. ICC (IBC) - International Building Code Most Recent Edition Adopted by Authority Having Jurisdiction, Including All Applicable Amendments and Supplements.

1.4 SUBMITTALS

- A. See Division 01 for Submittal Requirements.
- B. Product Data: Include profiles and sizes.
- C. Shop Drawings:
 - 1. Elevations, Plans, and Sections: Include elevations and dimensions, indicating locations of members and connections.
 - a. Drawing Scale: 1/4 inch to 1 foot, minimum.
 - 2. Details: Include fastener details.
 - 3. Documentation demonstrating compliance with specified performance requirements; signed and sealed by Engineer of Record for design of composite fabrications.
- D. Samples: Submit color chips or samples of railing, minimum 2 inches in length, indicating specified profile, size, and color. Provide full range of standard colors.
- E. Certificates: Certify that guardrail system assemblies meet or exceed specified performance requirements.
- F. Warranty Documentation: Manufacturer's 10 yr. warranty; ensure that forms have been completed in Owner's name and registered with manufacturer.

1.5 QUALITY ASSURANCE

- A. Structural Designer Qualifications: Professional Structural Engineer experienced in design of guardrail systems.

1.6 DELIVERY, STORAGE, AND HANDLING

- A. Deliver materials to project site in original, unbroken packages, or bundles bearing label of manufacturer and component identification markings.
- B. Store materials under cover and elevated above grade.
- C. Store adhesives at ambient temperature of 70 degrees F minimum and 85 degrees F maximum, in ventilated area, and as required by manufacturer's instructions.
- D. Protect composite fabrication units from damage including cracking or chipping.

1.7 WARRANTY

- A. See Division 01 - Closeout for additional warranty requirements.
- B. Provide manufacturer's standard ten -year warranty for against defective products.

PART 2 PRODUCTS

2.1 COMPOSITE FABRICATIONS

- A. Low Density Polyethylene(LLDPE) and recycled wood Composites:
 - 1. Finished Surface: Wood grain>
 - 2. Surface Burning Characteristics: Flame spread rating of 25 or less when tested in accordance with ASTM E84.
 - 3. Color: As selected by architect from manufacturer's standard range..

2.2 GUARDRAIL SYSTEMS AND HANDRAILS

- A. Manufacturers - Guardrail Systems:
 - 1. Trex, Basis of Design: www.trex.com/#sle.
 - 2. Approved equal.
- B. Manufacturers - Handrails:
 - 1. Trex, Basis of Design: www.trex.com/#sle.
 - 2. Approved equal.
- C. Design Criteria
 - 1. Comply with requirements for Contractor's design-related professional design services indicated in Section 014000 - Quality Requirements.
- D. Performance Requirements:
 - 1. Provide complete assemblies composed of guardrail systems, handrails, brackets, attachments, and anchorage devices capable of resisting specified performance criteria indicated below and transferring loads through assembly components to structure without damage to components.
 - 2. ICC (IBC) AND ASCE-7 CRITERIA
 - 3. Guards and Handrails - Concentrated Load Requirements:
 - a. Capable of resisting single concentrated load of 200 lbf applied in any direction at any point on handrail or top rail; comply with ICC (IBC) and ASCE 7.
 - 4. Guards - Distributed Load Requirements:
 - a. Capable of resisting load of 50 lbf per linear foot applied in any direction along handrail or top rail; comply with ICC (IBC) and ASCE 7.
- E. Components:
 - 1. Guardrail Systems: Composite tubes and plates; see drawings for configurations, mounting heights.

2. Railing Posts: Composite tubes.
 - a. Square Posts: Manufacturer's standard complying with regulatory requirements.
 3. Railing Post Supports:
 - a. Stanchion Bases: Stainless steel fabrications, ASTM A666 Type 316; manufacturer's recommended shape, size, and thickness.
 4. Handrails: Composite tubes; see drawings for configurations and mounting heights.
 - a. Handrail Diameter: Comply with ICC A117.1.
 - b. Handrail Horizontal Clearance: 1-1/2 inches clearance between handrail and other objects.
 - c. Round Handrails: 1-1/2 inches OD.
 - d. Handrail Brackets: Stainless steel, ASTM A666 Type 316.
- F. Accessories:
1. Manufacturer's standard composite components for complete assembly.
 - a. 90-degree handrail connectors and rail cover plates for inclined railings.
 2. Fasteners: Stainless steel; ASTM A666, Type 316.
 3. Rivets: Stainless steel; ASTM A666, Series 300 18-8 nickel-chromium composition.
 4. Adhesives: Manufacturer's standard epoxy adhesive for bonding spliced units.

2.3 FABRICATION

- A. Fabricate composite fabrications in accordance with ANSI/ACMA/PIC (CSP).
- B. Shop-assemble components in largest practical sizes for delivery to site.
- C. Fabricate components for tightly fitted and secured joints.
- D. Ease exposed edges and corners to small uniform radius.
- E. Fabricate surfaces smooth and true to form in accordance with ASTM D4385.
- F. Mark components with permanent, unique identification markings that are coordinated with shop drawing component markings.

2.4 ANCHORING ACCESSORIES

- A. Anchorage devices for attachment to structure; designed to comply with specified structural load performance requirements.
- B. Stainless Steel Bolting Connectors:
 1. Nuts: ASTM F594.

2.5 SOURCE QUALITY CONTROL

- A. See Section 014000 - Quality Requirements for additional requirements.

PART 3 EXECUTION

3.1 EXAMINATION

- A. Verify dimensions, tolerances, and interfaces with related work; verify location of supporting assemblies.
- B. Verify support work has been constructed to allow accurate placement and alignment of anchor bolts and other connections to supporting assemblies.

3.2 INSTALLATION - GENERAL

- A. See Section 067100 for installation of structural composite assemblies supporting composite fabrications.
- B. Anchor composite fabrications securely to structure.
- C. Install composite fabrications in accordance with manufacturer's installation instructions and as required to meet specified performance requirements.

- D. Attach mounting brackets to substrates with anchorage devices complying with specified performance requirements.
- E. Install components plumb and level, accurately fitted, free from distortion or defects, with tight joints.
- F. Perform cutting, drilling, and fitting of composite fabrications as required for accurately aligned installation.

3.3 INSTALLATION - GUARDRAIL SYSTEMS

- A. Where required, splice railings with splicing sleeves of same material as railings; attach, and bond spliced components with rivets and epoxy adhesive.
- B. Install guardrail systems and handrails in compliance with ADA Standards .
- C. Conceal anchor bolts and screws whenever possible; where not concealed use flush countersunk fastenings.

3.4 TOLERANCES

- A. Maximum Variation From Plumb: 1/4 inch per floor level, noncumulative.
- B. Maximum Offset From True Alignment: 1/4 inch.
- C. Maximum Out-of-Position: 1/4 inch.

3.5 CLEANING

- A. Clean composite fabrications in accordance with manufacturer's instructions.

3.6 PROTECTION

- A. Protect installed composite fabrications from subsequent construction operations.

END OF SECTION 068000

SECTION 102800
TOILET, BATH, AND LAUNDRY ACCESSORIES**PART 1 GENERAL****1.1 SECTION INCLUDES**

- A. Commercial toilet accessories.

1.2 RELATED REQUIREMENTS

- A. Division 5: Concealed supports for accessories, including in wall framing and plates.

1.3 REFERENCE STANDARDS

- A. ADA Standards - Americans with Disabilities Act (ADA) Standards for Accessible Design 2010.
- B. ASTM A123/A123M - Standard Specification for Zinc (Hot-Dip Galvanized) Coatings on Iron and Steel Products 2017.
- C. ASTM A269/A269M - Standard Specification for Seamless and Welded Austenitic Stainless Steel Tubing for General Service 2015a (Reapproved 2019).
- D. ASTM A653/A653M - Standard Specification for Steel Sheet, Zinc-Coated (Galvanized) or Zinc-Iron Alloy-Coated (Galvannealed) by the Hot-Dip Process 2020.
- E. ASTM A666 - Standard Specification for Annealed or Cold-Worked Austenitic Stainless Steel Sheet, Strip, Plate, and Flat Bar 2015.
- F. ASTM B86 - Standard Specification for Zinc and Zinc-Aluminum (ZA) Alloy Foundry and Die Castings 2018, with Editorial Revision (2021).
- G. ASTM B456 - Standard Specification for Electrodeposited Coatings of Copper Plus Nickel Plus Chromium and Nickel Plus Chromium 2017.
- H. ASTM C1036 - Standard Specification for Flat Glass 2021.
- I. ASTM C1048 - Standard Specification for Heat-Strengthened and Fully Tempered Flat Glass 2018.

1.4 ADMINISTRATIVE REQUIREMENTS

- A. Coordinate the work with the placement of internal wall reinforcement, concealed ceiling supports, and reinforcement of toilet partitions to receive anchor attachments.

1.5 SUBMITTALS

- A. See Division 1 for submittal procedures.
- B. Product Data: Submit data on accessories describing size, finish, details of function, and attachment methods.
- C. Manufacturer's Installation Instructions: Indicate special procedures and conditions requiring special attention.

PART 2 PRODUCTS**2.1 MANUFACTURERS**

- A. Commercial Toilet, Shower, and Bath Accessories:
 - 1. Bradley Corporation: www.bradleycorp.com/#sle.
 - 2. Bobrick Washroom Equipment.
 - 3. Substitutions: Section 016000 - Product Requirements.
- B. Provide products of each category type by single manufacturer.

2.2 MATERIALS

- A. Accessories - General: Shop assembled, free of dents and scratches and packaged complete with anchors and fittings, steel anchor plates, adapters, and anchor components for installation.
 - 1. Grind welded joints smooth.
 - 2. Fabricate units made of metal sheet of seamless sheets with flat surfaces.
- B. Keys: Provide four keys for each accessory to Owner; master key lockable accessories.
- C. Stainless Steel Sheet: ASTM A666, Type 304.
- D. Stainless Steel Tubing: ASTM A269/A269M, Grade TP304 or TP316.
- E. Galvanized Sheet Steel: Hot-dipped galvanized steel sheet, ASTM A653/A653M, with G90/Z275 coating.
- F. Zinc Alloy: Die cast, ASTM B86.
- G. Mirror Glass: Tempered safety glass, ASTM C1048; and ASTM C1036 Type I, Class 1, Quality Q2, with silvering as required.
- H. Adhesive: Two component epoxy type, waterproof.
- I. Fasteners, Screws, and Bolts: Hot dip galvanized; tamper-proof; security type.
- J. Expansion Shields: Fiber, lead, or rubber as recommended by accessory manufacturer for component and substrate.

2.3 FINISHES

- A. Stainless Steel: Satin finish, unless otherwise noted.
- B. Chrome/Nickel Plating: ASTM B456, SC 2, satin finish, unless otherwise noted.
- C. Powder-Coated Steel: Clean, degrease, and neutralize. Follow immediately with a phosphatizing treatment, prime coat, and two finish coats of powder coat enamel.
- D. Galvanizing for Items Other than Sheet: Comply with ASTM A123/A123M; galvanize ferrous metal and fastening devices.
- E. Back paint components where contact is made with building finishes to prevent electrolysis.

2.4 COMMERCIAL TOILET ACCESSORIES

- A. Mirrors: Stainless steel framed, 1/4 inch thick tempered safety glass; ASTM C1048.
 - 1. Size: As indicated on Drawings..
 - 2. Frame: 0.05 inch angle shapes, with mitered and welded and ground corners, and tamperproof hanging system; satin finish.
 - 3. Backing: Full-mirror sized, minimum 0.03 inch galvanized steel sheet and nonabsorptive filler material.
- B. Grab Bars: Stainless steel, textured surface.
 - 1. Standard Duty Grab Bars:
 - a. Push/Pull Point Load: 250 pound-force, minimum.
 - b. Dimensions: 1-1/4 inch outside diameter, minimum 0.05 inch wall thickness, concealed flange mounting, 1-1/2 inch clearance between wall and inside of grab bar.
 - c. Finish: Satin.
 - d. Length and Configuration: As indicated on drawings.

PART 3 EXECUTION**3.1 EXAMINATION**

- A. Verify existing conditions before starting work.

- B. Verify exact location of accessories for installation.
- C. Verify that field measurements are as indicated on drawings.
- D. See Section 005500 for installation of blocking, reinforcing plates, and concealed anchors in walls.

3.2 PREPARATION

- A. Deliver inserts and rough-in frames to site for timely installation.
- B. Provide templates and rough-in measurements as required.

3.3 INSTALLATION

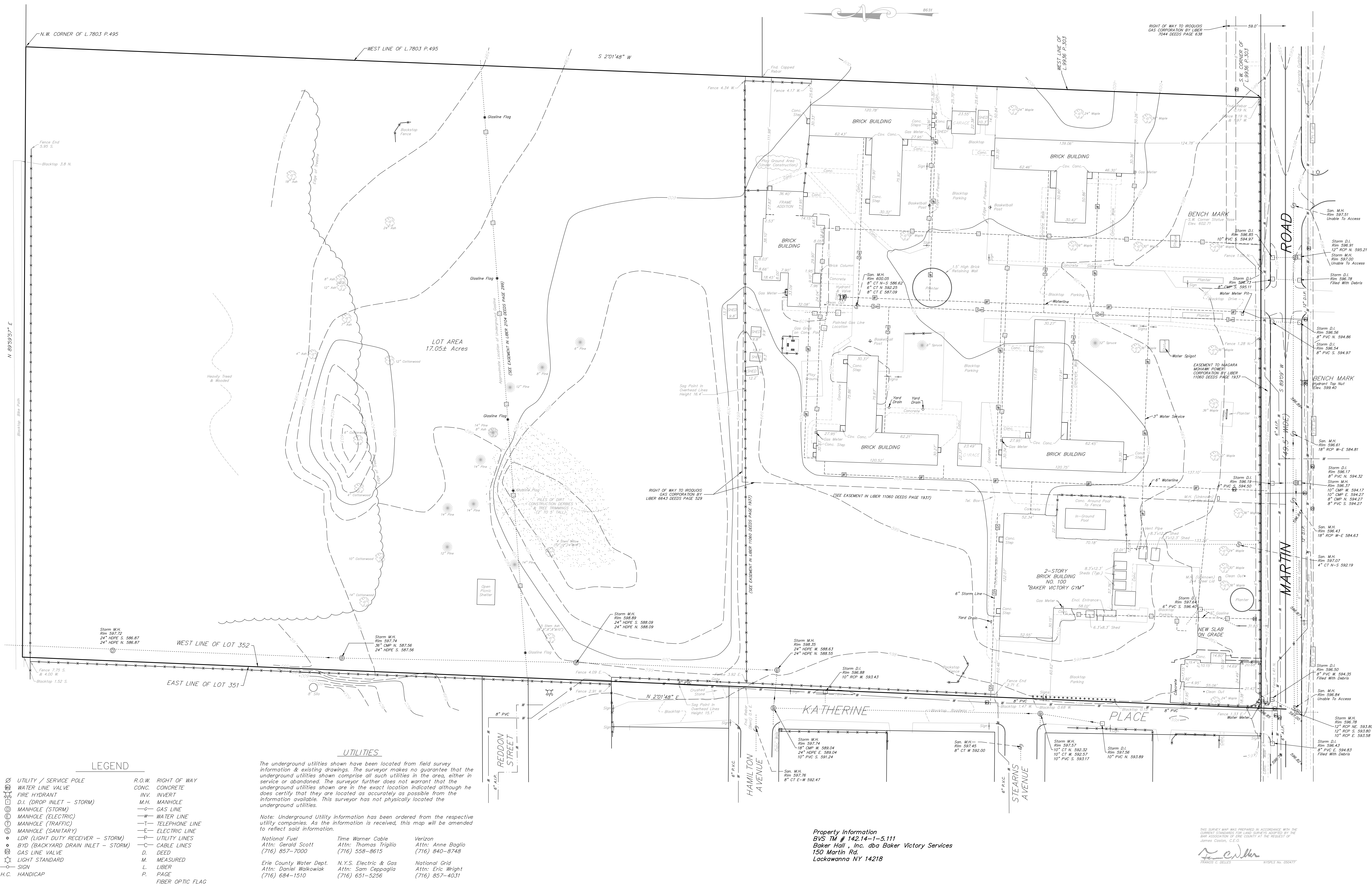
- A. Install accessories in accordance with manufacturers' instructions in locations indicated on drawings.
- B. Install plumb and level, securely and rigidly anchored to substrate.
- C. Mounting Heights: As required by accessibility regulations, and as indicated on Drawings.

3.4 PROTECTION

- A. Protect installed accessories from damage due to subsequent construction operations.

END OF SECTION 102800

This page intentionally left blank



LEGEND

⊗	UTILITY / SERVICE POLE	R.O.W. RIGHT OF WAY
⊖	WATER LINE VALVE	CONC. CONCRETE
⊕	FIRE HYDRANT	INV. INVERT
⊖	D.I. (DROP INLET - STORM)	M.H. MANHOLE
⊕	MANHOLE (STORM)	—G— GAS LINE
⊖	MANHOLE (ELECTRIC)	—W— WATER LINE
⊕	MANHOLE (TRAFFIC)	—T— TELEPHONE LINE
⊖	MANHOLE (SANITARY)	—E— ELECTRIC LINE
⊕	LDR (LIGHT DUTY RECEIVER - STORM)	—P— UTILITY LINES
⊖	BYD (BACKYARD DRAIN INLET - STORM)	—C— CABLE LINES
⊕	GAS LINE VALVE	D. DEED
⊖	LIGHT STANDARD	M. MEASURED
⊕	SIGN	L. LIBER
⊖	H.C. HANDICAP	P. PAGE
		FIBER OPTIC FLAG

UTILITIES

The underground utilities shown have been located from field survey information & existing drawings. The surveyor makes no guarantee that the underground utilities shown comprise all such utilities in the area, either in service or abandoned. The surveyor further does not warrant that the underground utilities shown are in the exact location indicated although he does certify that they are located as accurately as possible from the information available. This surveyor has not physically located the underground utilities.

Note: Underground Utility information has been ordered from the respective utility companies. As the information is received, this map will be amended to reflect said information.

National Fuel Attn: Gerard Scott (716) 857-7000	Time Warner Cable Attn: Thomas Trigilo (716) 558-8615	Verizon Attn: Anne Baglio (716) 840-8748
Erie County Water Dept. Attn: Daniel Walkowiak (716) 684-1510	N.Y.S. Electric & Gas Attn: Sam Cappaglia (716) 651-5256	National Grid Attn: Eric Wright (716) 857-4031

Note: All interior underground utilities were plotted utilizing original site plan drawings furnished to our office.

Property Information
BVS TM # 142.14-1-5.111
Baker Hall, Inc. dba Baker Victory Services
150 Martin Rd
Lockawanna NY 14218

This survey map was prepared in accordance with the standards established by the State of New York and approved by the Board of Surveyors of the State of New York at the request of James Costello, C.E.D.

James Costello
JAMES COSTELLO

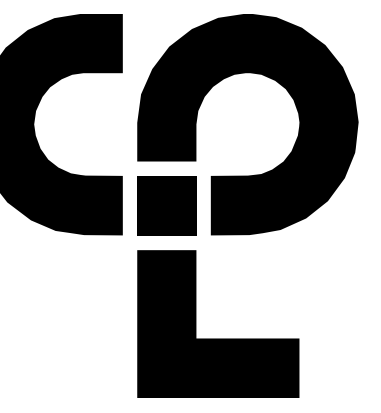
BAKER VICTORY SERVICES
FAMILY HOUSE
150 MARTIN ROAD

DATE	DRAWN	CHECKED
3/28/2016	JEH	DHJ
SCALE	1" = 40'	
SHEET TITLE	SITE SURVEY PLAN	

PROJECT NUMBER
13652.00

C000
DRAWING NUMBER

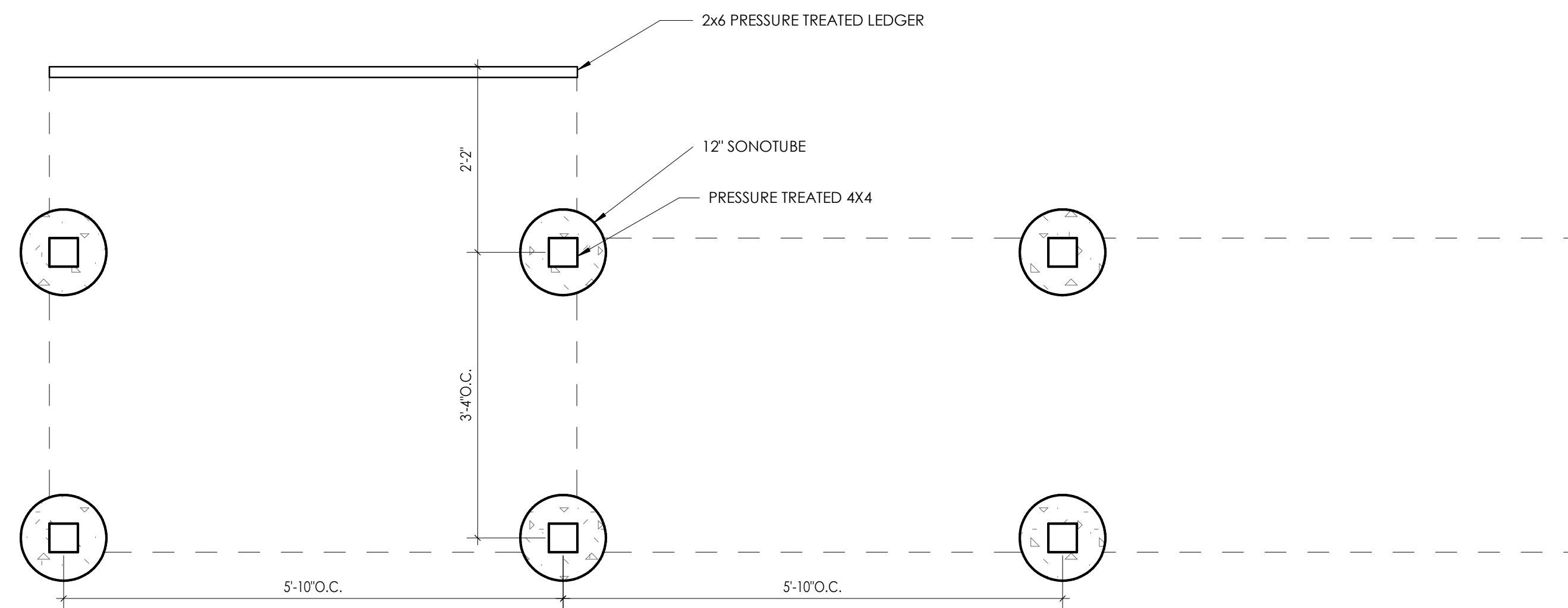
FOR REFERENCE ONLY



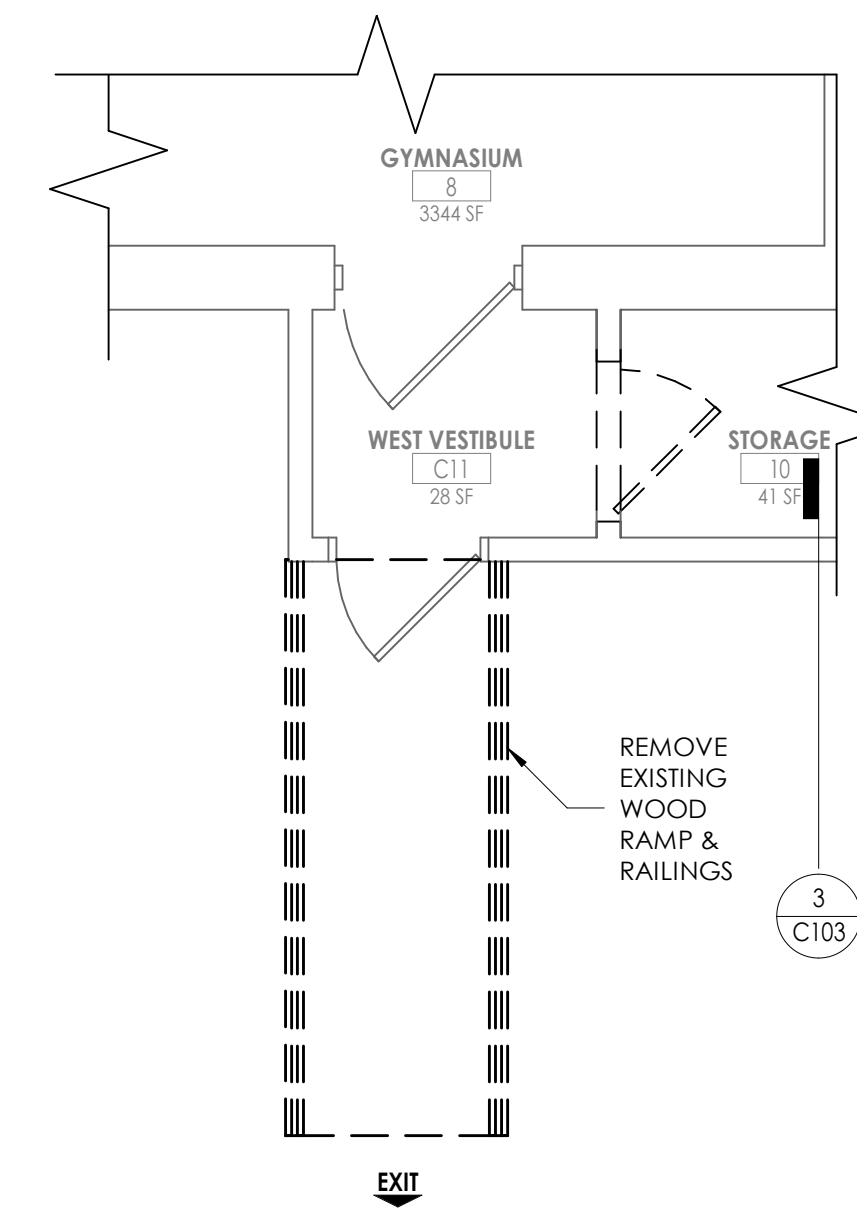
SITE PLAN GENERAL NOTES

1. ALL DRAWINGS ARE GRAPHIC REPRESENTATIONS OF APPROXIMATE LOCATIONS OF NEW MATERIALS. FIELD VERIFY ALL EXISTING CONDITIONS PRIOR TO COMMENCEMENT OF WORK.
2. WORK AREAS SHALL BE MAINTAINED AND ALL WORK AREAS SHALL BE LEFT BROOMED CLEAN AT END OF EACH DAY.
3. COORDINATE WITH OTHER TRADES FOR SEQUENCING OF WORK.
4. REFER TO OWNER FURNISHED EQUIPMENT DRAWINGS AND SUBMITTALS FOR FINAL COORDINATION AND INSTALLATION REQUIREMENTS INCLUDING BUT NOT LIMITED TO: DIMENSIONS, LOCATIONS & MEP CONNECTION LOCATION.
5. PATCH AND FINISH ALL EXISTING WALLS TO REMAIN WITHIN THE PROJECT LIMIT AREA TO RECEIVE SPECIFIED FINISHES.
6. ALL EXISTING EXPANSION JOINT COVERS OR ASSEMBLIES ARE TO BE PROTECTED AND MAINTAINED DURING THE COURSE OF CONSTRUCTION UNLESS OTHERWISE NOTED.
7. EXISTING SITE PLAN UTILITY INFORMATION WAS OBTAINED THROUGH EXISTING DOCUMENTS ARE SHOWN FOR REFERENCE PURPOSES ONLY.
- 8.

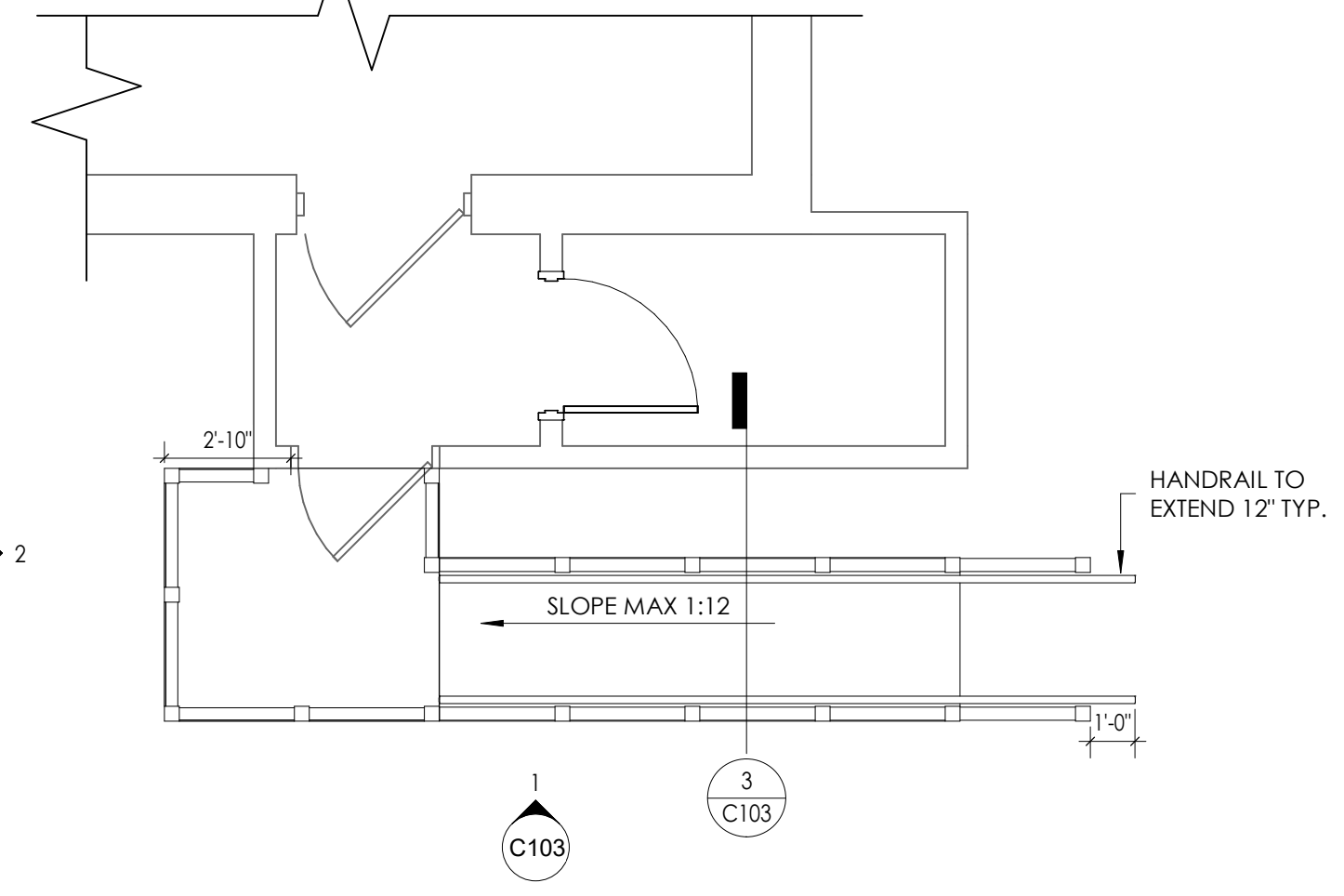
▨ HATCHED AREA DENOTES WORK BY OWNER'S FORCES



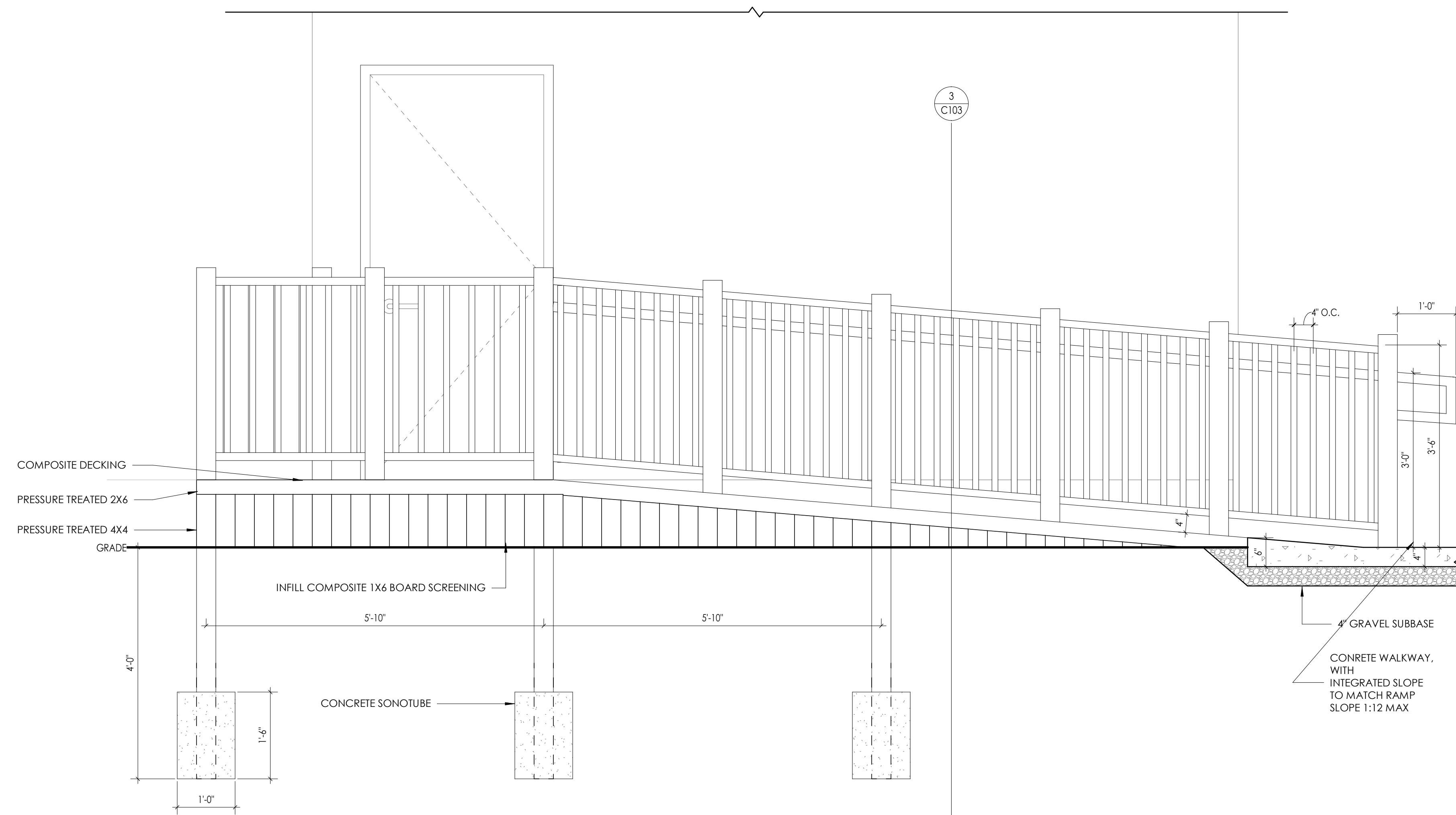
4 RAMP FOUNDATION PLAN
C103 3/4" = 1'-0"



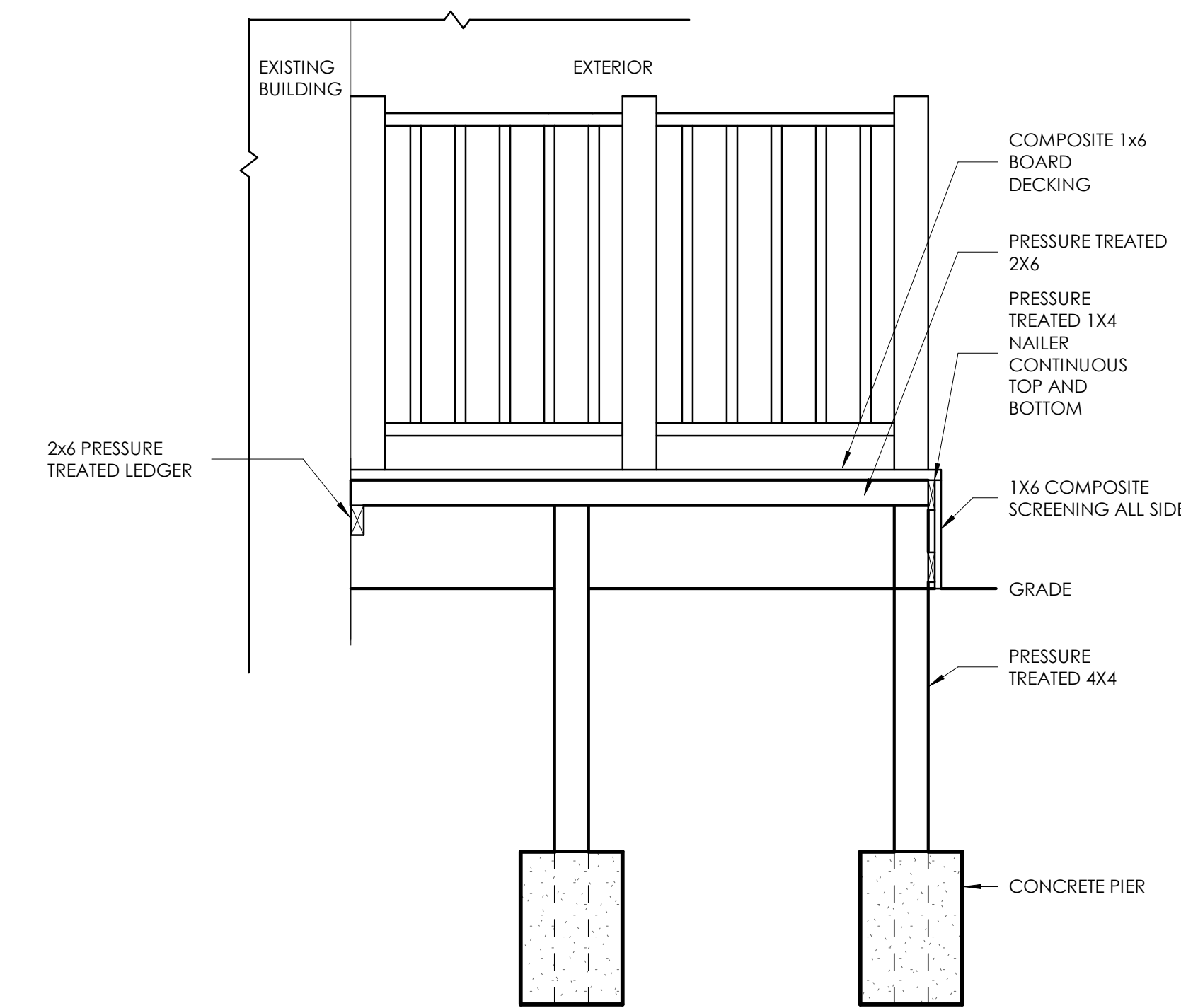
5 EAST RAMP DEMOLITION PLAN
C103 1/4" = 1'-0"



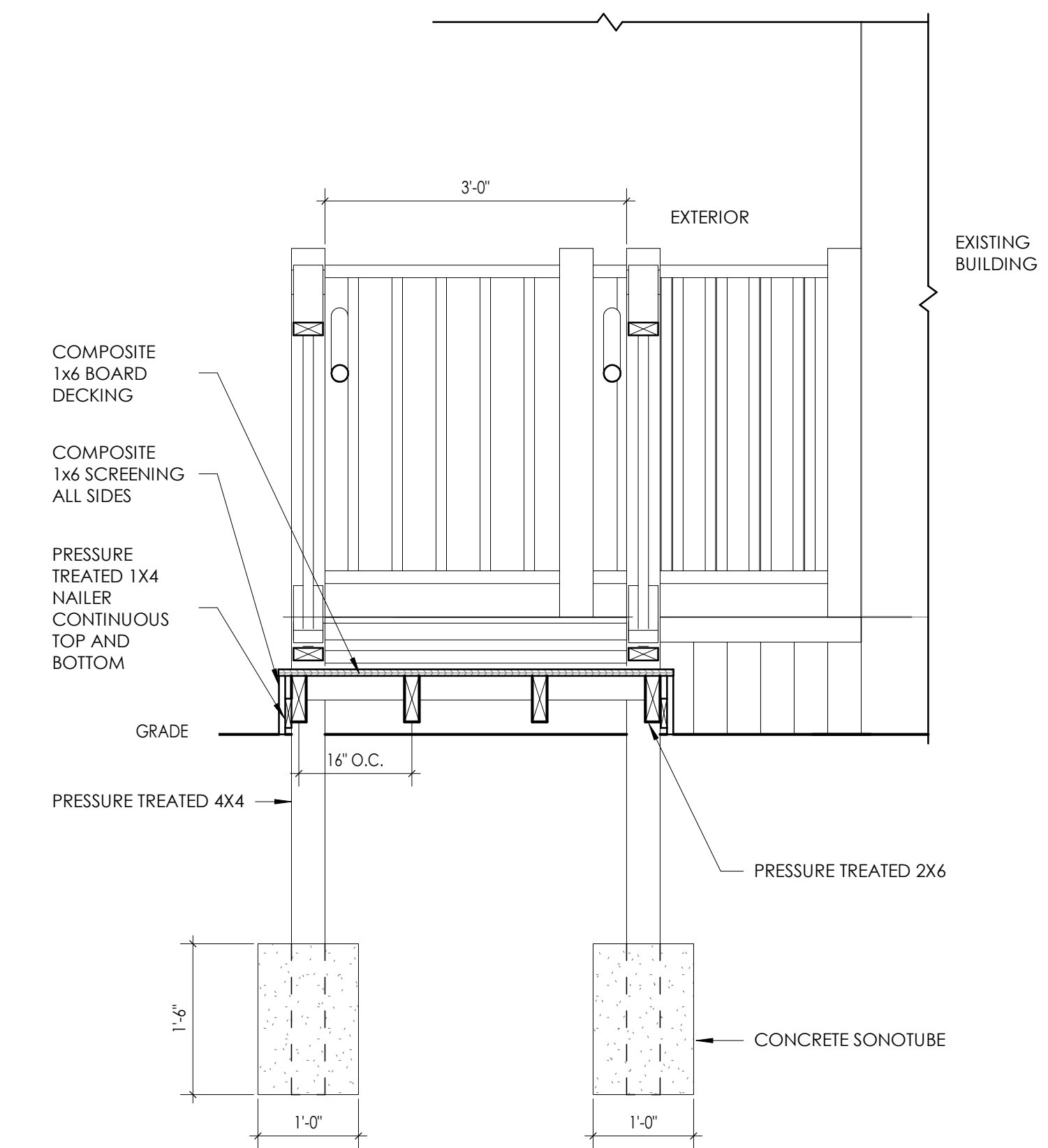
6 PROPOSED RAMP PLAN
C103 1/4" = 1'-0"



1 RAMP LONG ELEVATION-SECTION
C103 3/4" = 1'-0"



2 RAMP SECTION
C103 3/4" = 1'-0"



3 RAMP SECTION
C103 3/4" = 1'-0"

PROJECT INFORMATION

Project Number: 16128.02
Client Name: **OLV HUMAN SERVICES**

REV-UP RENOVATION

Project Address: 100 MARTIN ROAD, LACKAWANNA, NEW YORK 14218

PROJECT ISSUE & REVISION SCHEDULE

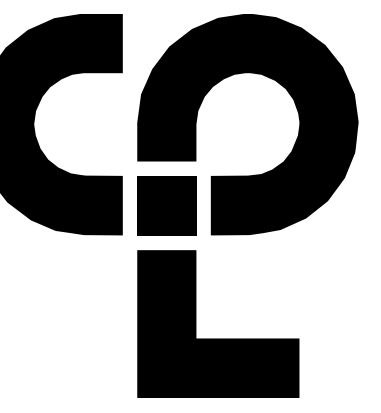
1 4/28/2022 ADDENDUM 1



SHEET INFORMATION

Name: Scale: As indicated
Date: 04/28/2022
Project Status: BID DOCUMENTS
Drawn By: M.J.O.T. Checked By: M.E.
Drawing Title: ELEVATIONS AND SECTIONS

Drawing Number



CPLE | Architecture Engineering Planning
26 Mississippi Street, Suite 100,
Buffalo, NY 14203
CPLEam.com

FLOOR PLAN GENERAL NOTES

1. ALL DRAWINGS ARE GRAPHIC REPRESENTATIONS OF APPROXIMATE LOCATIONS OF NEW MATERIALS. FIELD VERIFY ALL EXISTING CONDITIONS PRIOR TO COMMENCEMENT OF WORK.
2. ALL WALL DIMENSIONS INDICATED ON FLOOR PLANS ARE TO FINISHED FACE OF WALL TO FINISHED FACE OF WALL UNLESS OTHERWISE NOTED.
3. SEE SHEET **A200** FOR INTERIOR PARTITION TYPES.
4. SEE **A200** FOR INTERIOR AND EXTERIOR DOORS, WINDOWS, CURTAINWALLS, AND STOREFRONTS.
5. WORK AREAS SHALL BE MAINTAINED AND ALL WORK AREAS SHALL BE LEFT BROOMED CLEAN AT END OF EACH DAY.
6. COORDINATE WITH OTHER TRADES FOR SEQUENCING OF WORK.
7. REFER TO **A200** FOR TYPICAL FIXTURE MOUNTING HEIGHTS AND ACCESSORIES LEGEND.
8. REFER TO **A200** FOR FURNISH AND INSTALL SCOPE OF EQUIPMENT AND ACCESSORIES.
9. EQUIPMENT SHOWN ON THESE DOCUMENTS ARE FOR REFERENCE ONLY AND ARE FOR COORDINATION OF M.E.P. INFRASTRUCTURE TO OPERATE ITEMS INCLUDED UNDER THE SCOPE.
10. REFER TO OWNER FURNISHED EQUIPMENT DRAWINGS AND SUBMITTALS FOR FINAL COORDINATION AND INSTALLATION REQUIREMENTS INCLUDING BUT NOT LIMITED TO: DIMENSIONS, LOCATIONS & MEP CONNECTION LOCATION.
11. ALL FURNITURE IS PROVIDED BY OWNER UNLESS NOTED OTHERWISE.
12. PATCH AND FINISH ALL EXISTING WALLS TO REMAIN WITHIN THE PROJECT LIMIT AREA TO RECEIVE SPECIFIED FINISHES.
13. ALL EXISTING EXPANSION JOINT COVERS OR ASSEMBLIES ARE TO BE PROTECTED AND MAINTAINED DURING THE COURSE OF CONSTRUCTION UNLESS OTHERWISE NOTED.

FLOOR PLAN KEY NOTES

- 1 STAINLESS STEEL TABLE BY OWNER
- 2 NEW FLOORING BASE & PAINT BY OWNER'S FORCES
- 3 PROVIDE NEW LINTEL AT NEW OPENING ON EXISTING CMU WALL
- 4 INFILL AT TOP OF PARTITION WITH 2X WOOD STUDS. PROVIDE 5/8" DRYWALL TYPE 'X' BOTH SIDES TO UNDERSIDE OF ROOF TO PROVIDE SMOKE TIGHT ENCLOSURE (BY OWNER'S FORCES)
- 5 INSTALL 5/8" DRYWALL TYPE 'X' ON EXPOSED STUD WALLS AND UNDERSIDE OF ROOF JOISTS

HATCH AREA DENOTES WORK BY OWNERS FORCES

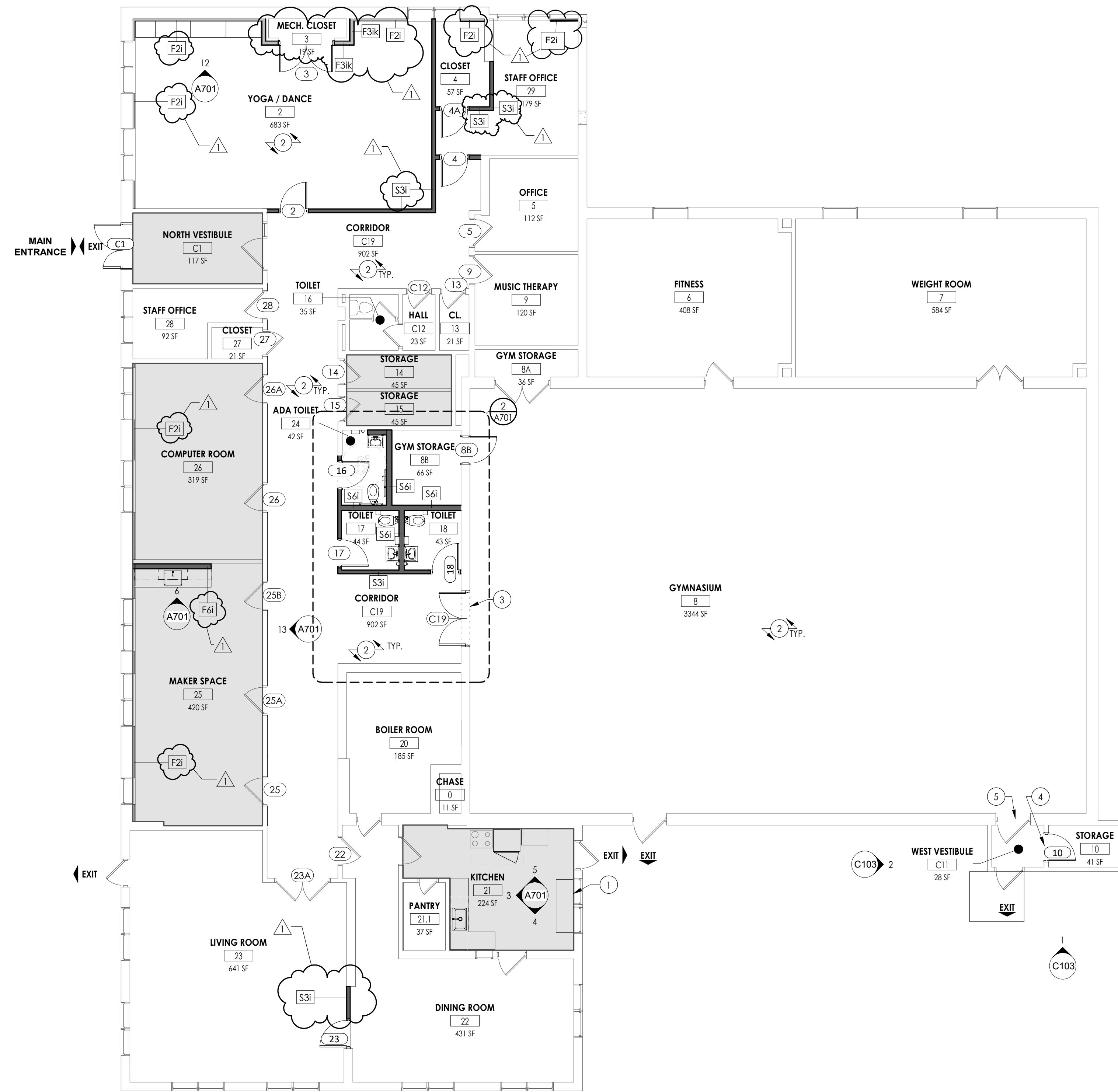
PROJECT INFORMATION

Project Number: 16128.02
Client Name: **OLV HUMAN SERVICES**
Project Name: **REV-UP RENOVATION**

Project Address: 100 MARTIN ROAD, LACKAWANNA, NEW YORK 14218

PROJECT ISSUE & REVISION SCHEDULE

No. Date Description
1 4/28/2022 ADDENDUM 1



1 FIRST FLOOR PLAN
A200 1/8" = 1'-0"
TRUE NORTH



SHEET INFORMATION

Name: Scale: 4/19/2022 As indicated
Project Status: BID DOCUMENTS
Drawn by: MJDOT Checked by: ME
Drawing Title: **FIRST FLOOR PLAN, PARTITION INFORMATION AND NOTES**

Drawing Number: **DD A200**

PROJECT INFORMATION

Project Number
16128.02
Client Name
OLV HUMAN SERVICES

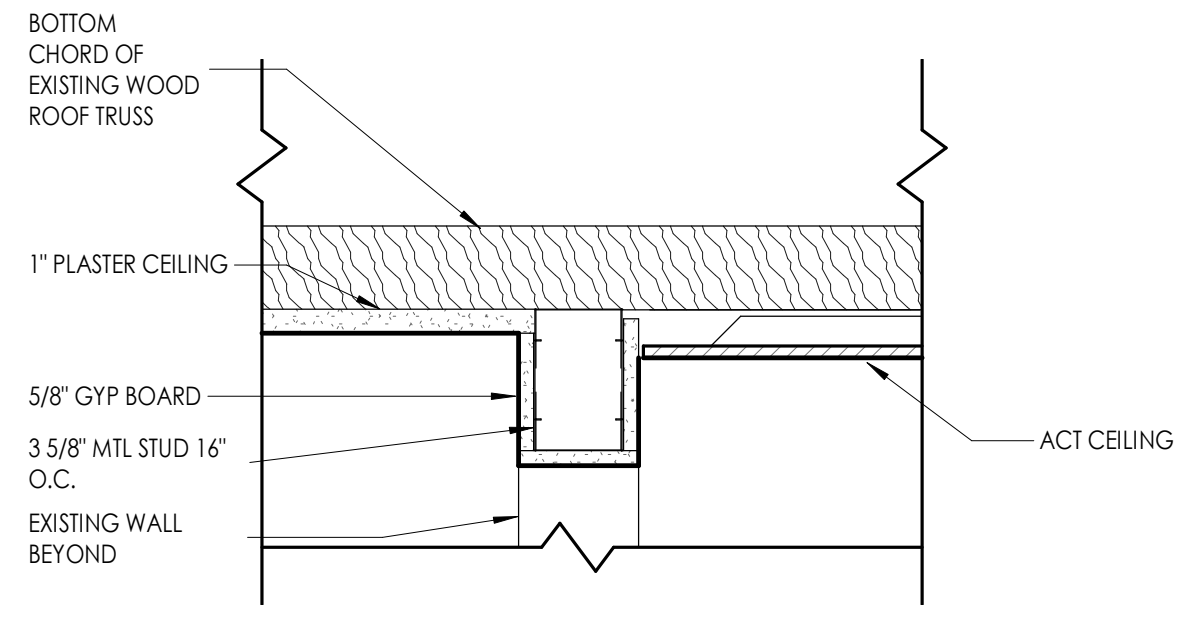
PROJECT NAME

REV-UP RENOVATION

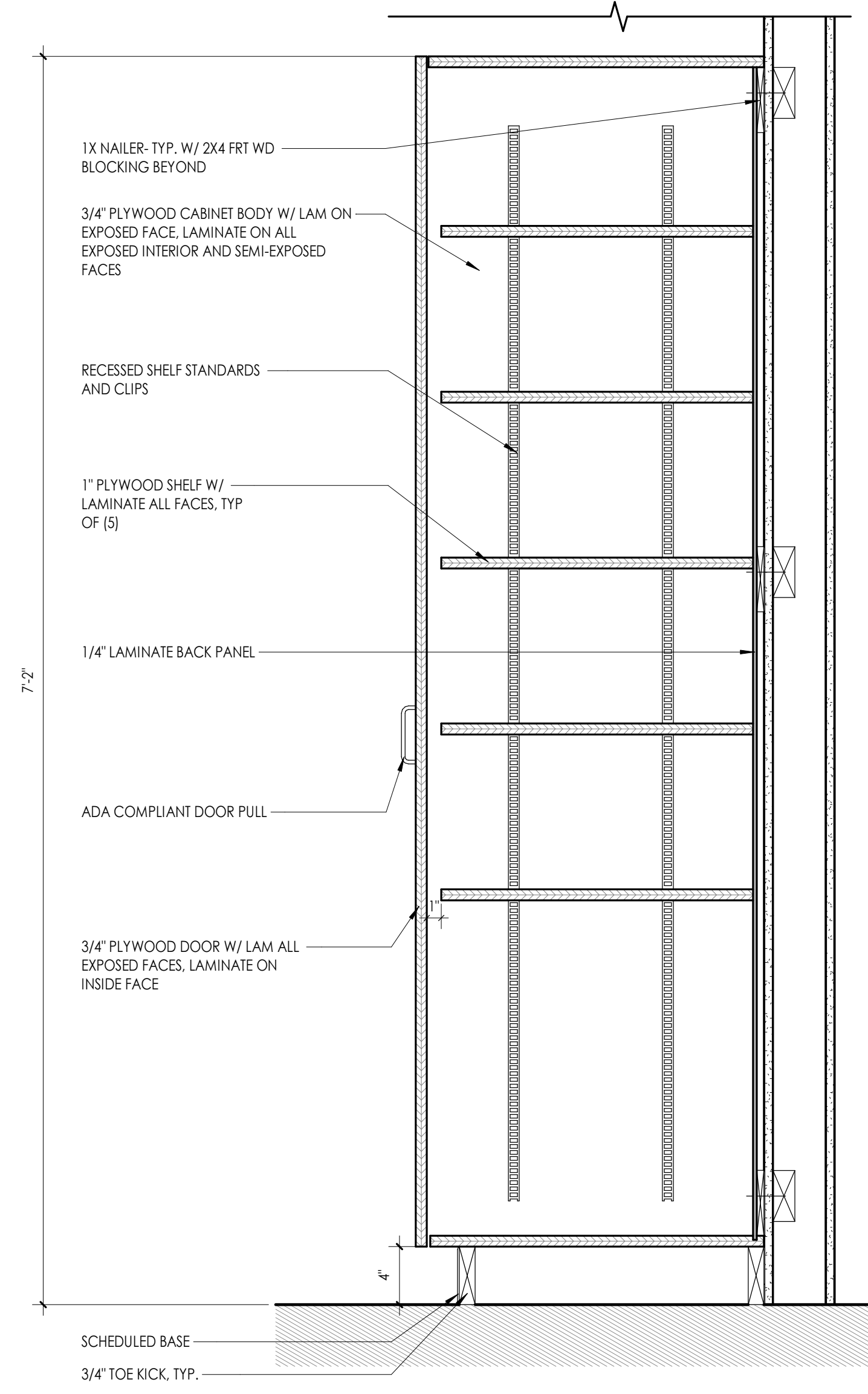
Project Address
100 MARTIN ROAD, LACKAWANNA, NEW YORK 14218

PROJECT ISSUE & REVISION SCHEDULE

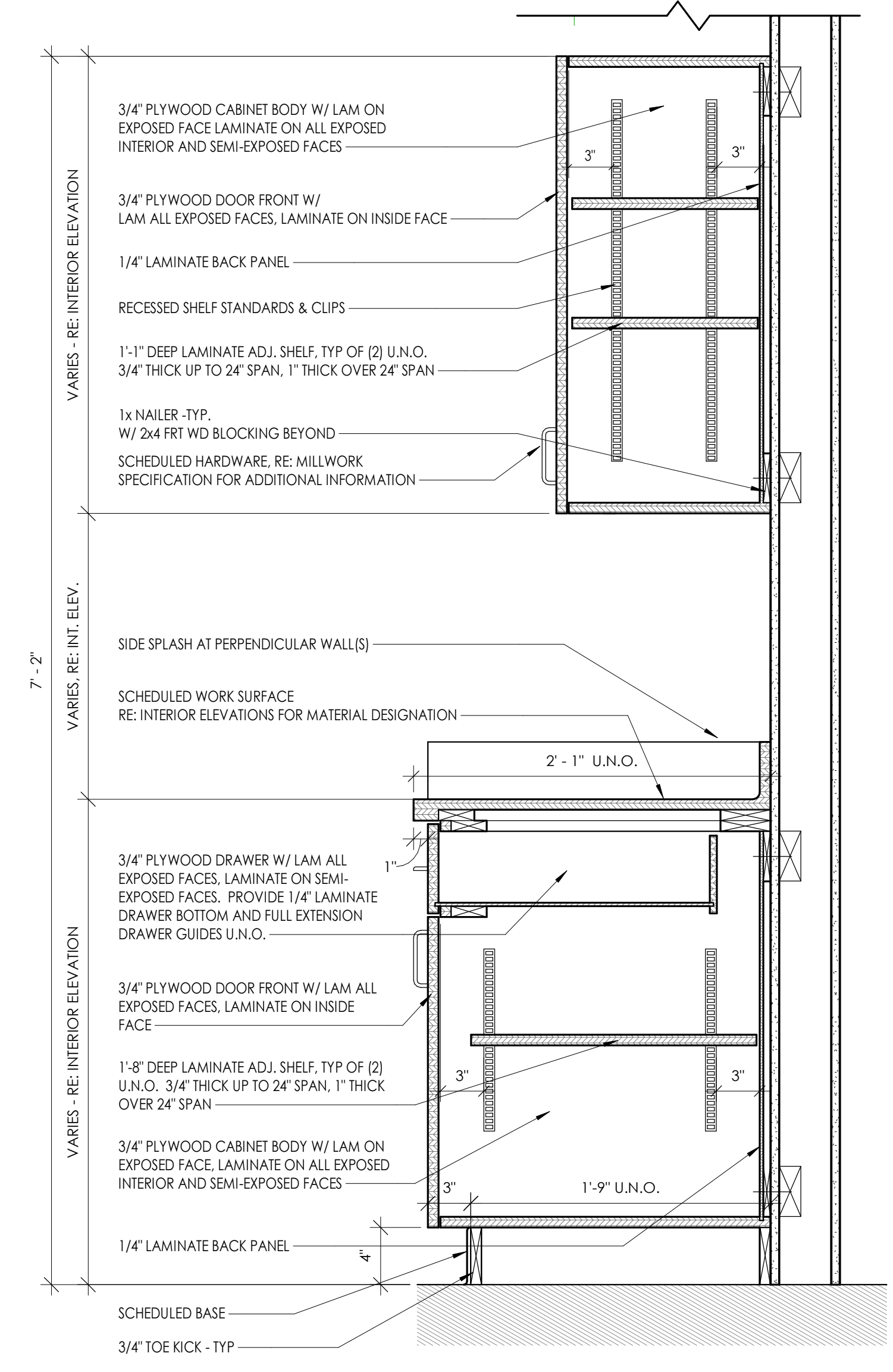
Issue
1 4/28/2022 ADDENDUM 1



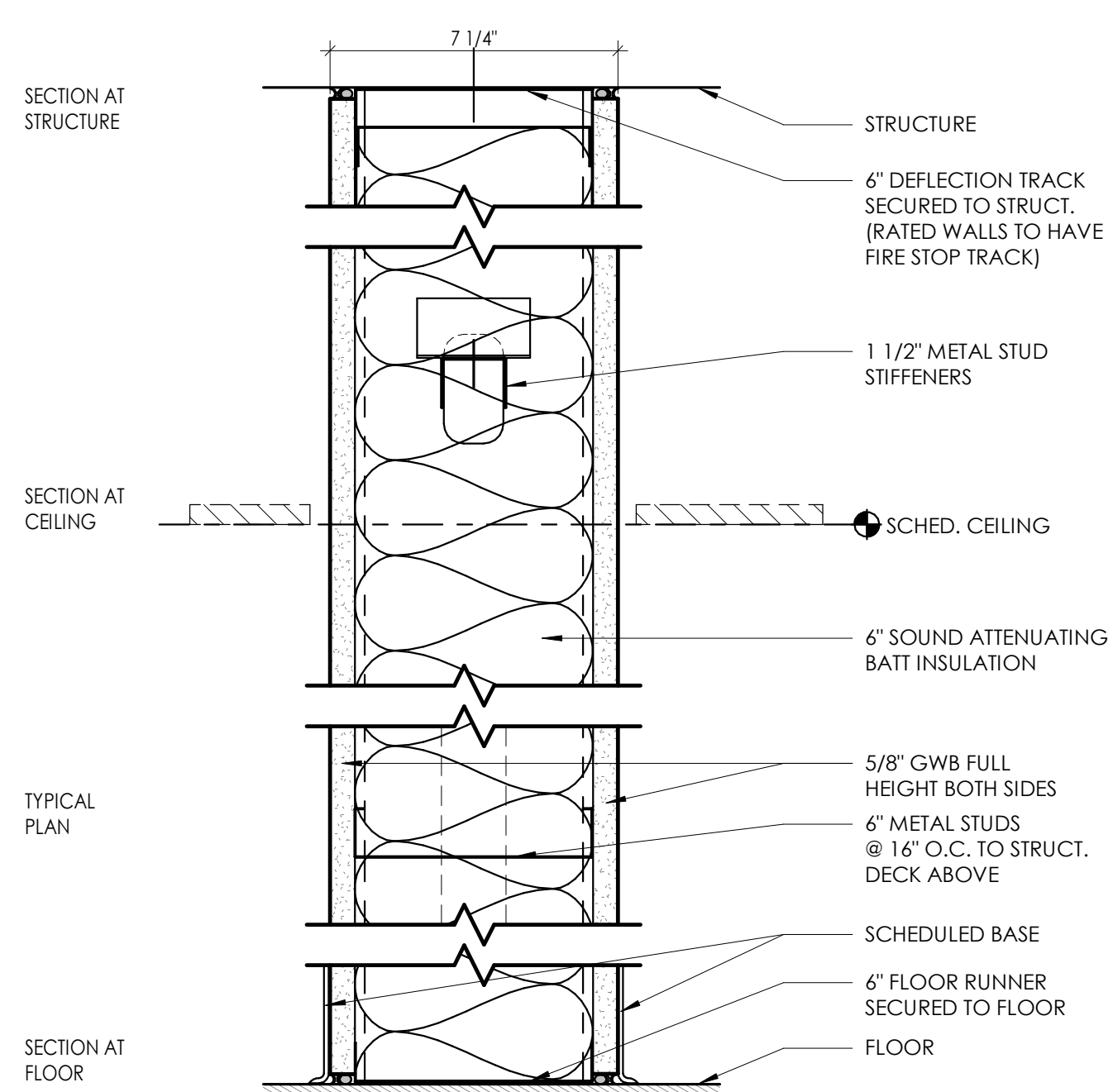
1 SECTION - BULKHEAD DETAIL
1 1/2" = 1'-0"



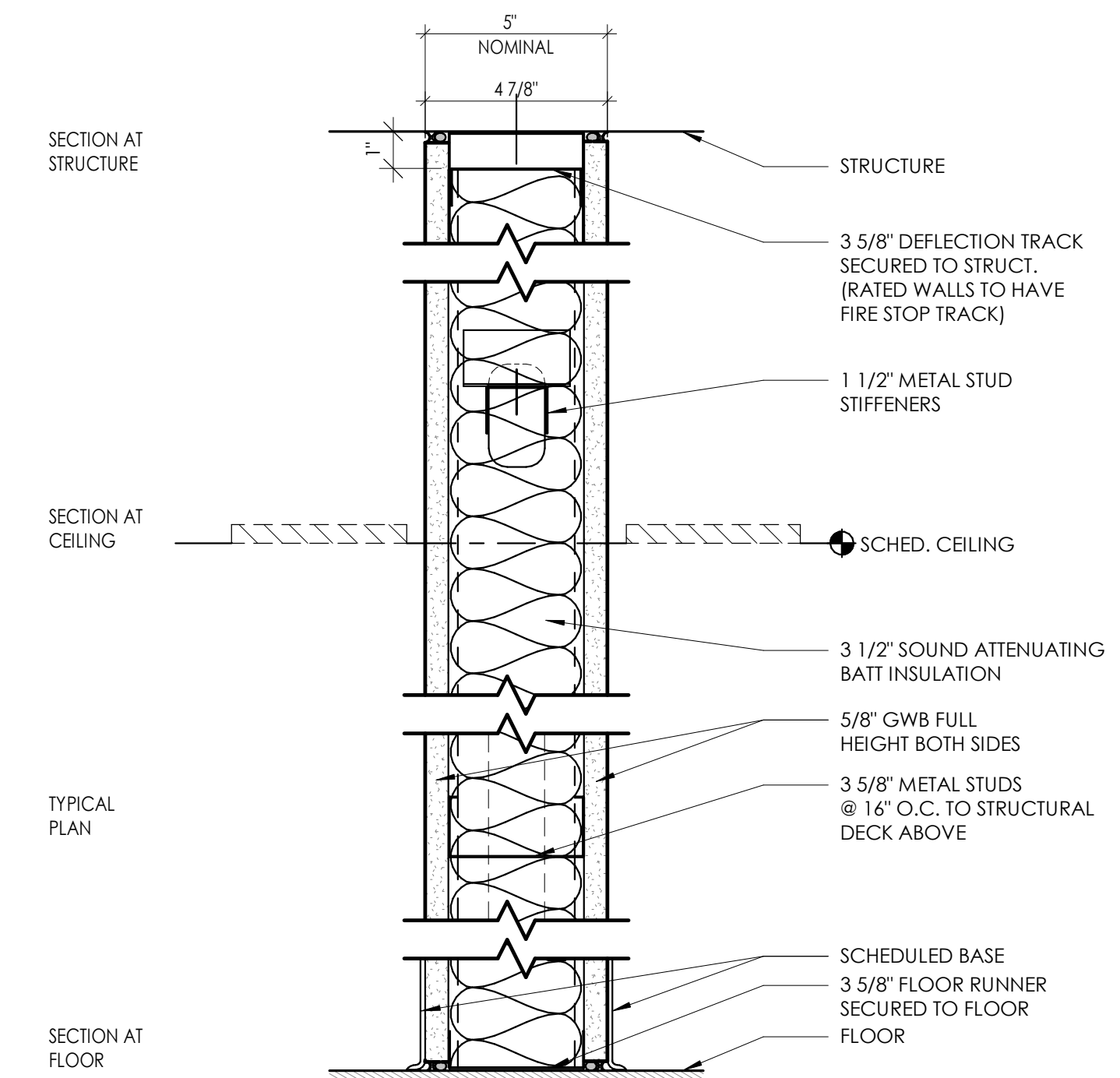
3 TYPICAL TALL CABINET
1 1/2" = 1'-0"



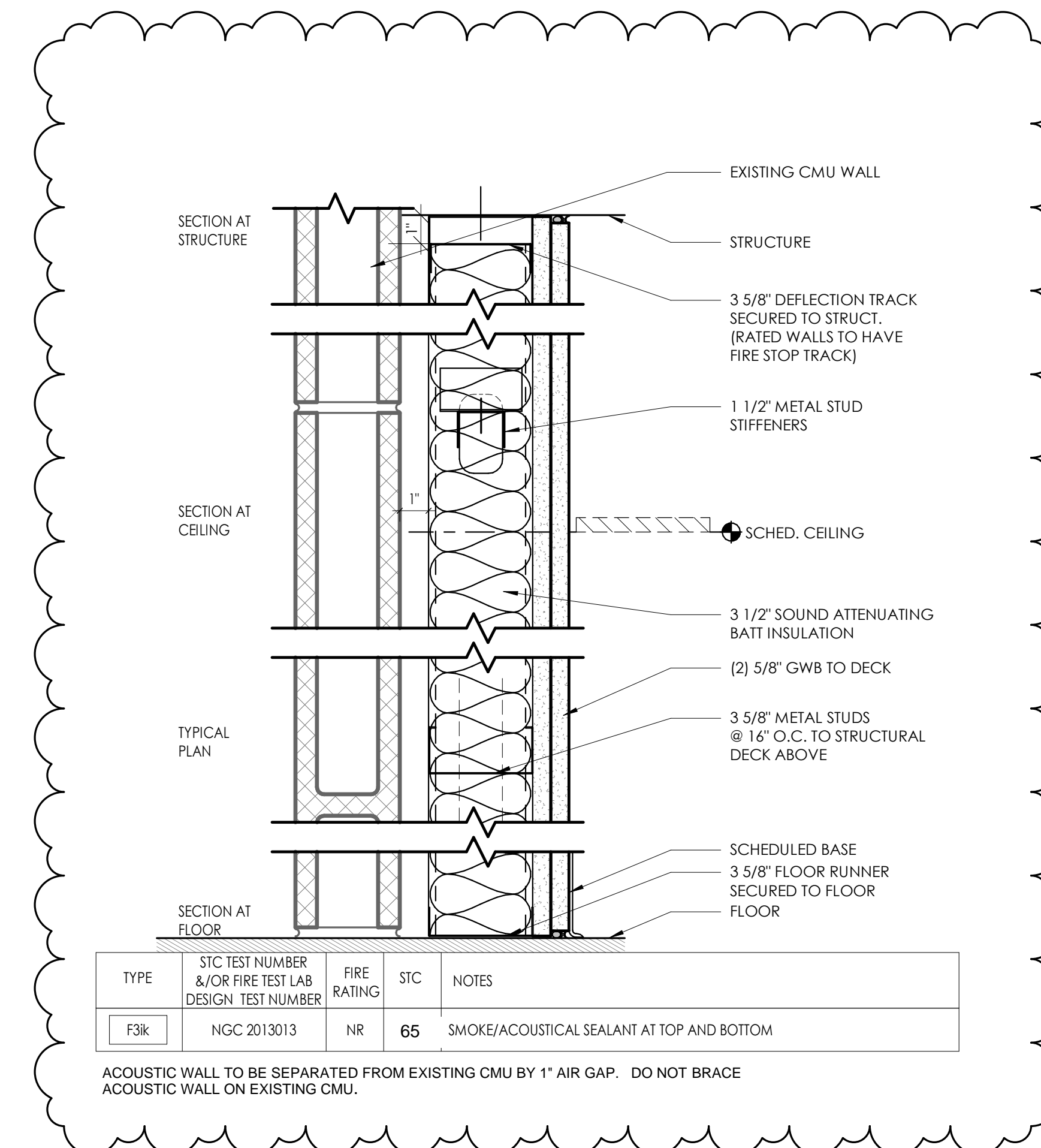
2 TYPICAL BASE AND UPPER CABINET MILLWORK SECTION
1 1/2" = 1'-0"



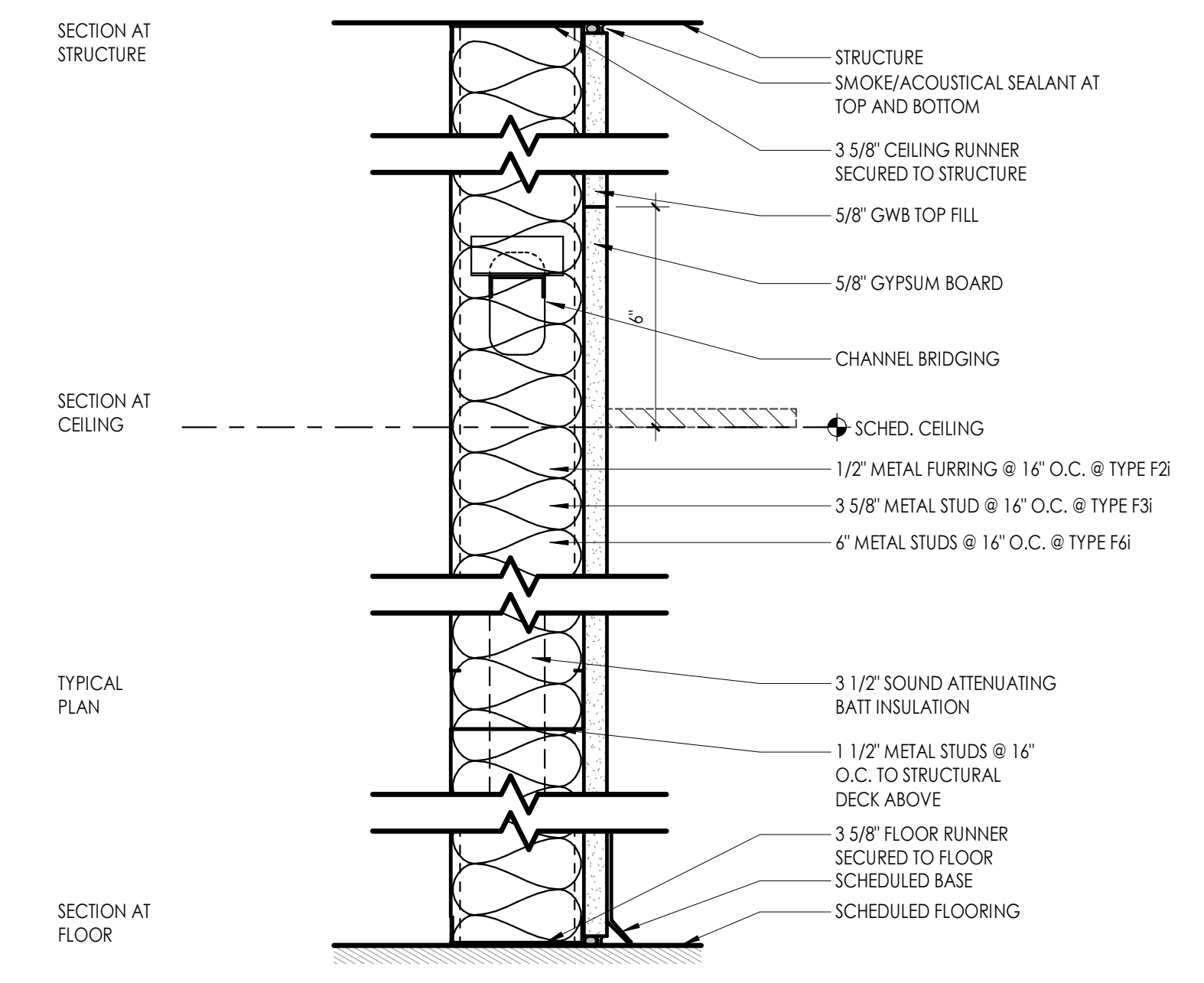
TYPE	STC TEST NUMBER &/OR FIRE TEST LAB DESIGN TEST NUMBER	FIRE RATING	STC	NOTES
S6I	NGC 2013022	NR	40	SMOKE/ACOUSTICAL SEALANT AT TOP AND BOTTOM



TYPE	STC TEST NUMBER &/OR FIRE TEST LAB DESIGN TEST NUMBER	FIRE RATING	STC	NOTES
S3I	NGC 2013004	NR	40	SMOKE/ACOUSTICAL SEALANT AT TOP AND BOTTOM



TYPE	STC TEST NUMBER &/OR FIRE TEST LAB DESIGN TEST NUMBER	FIRE RATING	STC	NOTES
F3K	NGC 2013013	NR	65	SMOKE/ACOUSTICAL SEALANT AT TOP AND BOTTOM



TYPE	STC TEST NUMBER &/OR FIRE TEST LAB DESIGN TEST NUMBER	FIRE RATING	STC	NOTES
F2I		NR	NA	
F3I		NR	NA	
F6I		NR	NA	

NOTE: FURRING EXCEEDING 8FT IN HEIGHT SHALL BE BRACED AT 8FT O.C. BACK TO STRUCTURE. PROVIDE ATTACHMENT CLIPS AT FIRE PROOFING.



SHEET INFORMATION

Name: Scale: As indicated
Date: 04/19/2022
Project Status: BID DOCUMENTS
Drawn by: M.J.O.T. Checked by: M.E.
Drawing Title: TYPICAL DETAILS

Drawing Number

OLV REV-UP! RENOVATIONS

DOOR HARDWARE TYPES

1 - DOOR 2, 23

3 HINGES	TA 2714	US26D	MCKINNEY
1 CLASSROOM LOCK WITH LEVER	ND SERIES GRADE 1, CYLINDRICAL	US26D	SCHLAGE
SURFACE MOUNTED CLOSER	351 SERIES		SARGENT

2 - DOOR 3

6 HINGES	TA 2714	US26D	MCKINNEY
1 STOREROOM LOCK WITH LEVER	ND SERIES GRADE 1, CYLINDRICAL	US26D	SCHLAGE
FLUSHBOLT WITH ACTIVE,INACTIVE LEAF		US26D	IVES
2 OVERHEAD STOPS	1-X36	630	RIXSON
2 ACOUSTIC SEAL SET	STCSET- 1E	630	PEMKO

3 - DOORS 4A, 8B

3 HINGES	TA 2714	US26D	MCKINNEY
1 STOREROOM LOCK WITH LEVER	ND SERIES GRADE 1, CYLINDRICAL	US26D	SCHLAGE
1 OVERHEAD STOPS	1-X36	630	RIXSON

3A - DOOR 10

3 HINGES	TA 2714	US26D	MCKINNEY
1 STOREROOM LOCK WITH LEVER	ND SERIES GRADE 1, CYLINDRICAL	US26D	SCHLAGE
SURFACE MOUNTED CLOSER	351 SERIES		SARGENT

4 - DOOR 4

3 HINGES	TA 2714	US26D	MCKINNEY
1 CLASSROOM LOCK WITH LEVER	ND SERIES GRADE 1, CYLINDRICAL	US26D	SCHLAGE
SURFACE MOUNTED CLOSER	351 SERIES		SARGENT

5 - DOORS 16,17,18

3 HINGES	TA 2714	US26D	MCKINNEY
1 PRIVACY LOCK WITH LEVER	ND SERIES GRADE 1, CYLINDRICAL	US26D	SCHLAGE
SURFACE MOUNTED CLOSER	351 SERIES		SARGENT

6 - DOOR C1

6 HINGES	TA 2714	US26D	MCKINNEY
1 ELECTRIC LOCK WITH LEVER(FAIL SAFE)	ND SERIES GRADE 1, CYLINDRICAL	US26D	SCHLAGE
FLUSHBOLT WITH ACTIVE,INACTIVE LEAF		US26D	IVES
1 OVERHEAD STOPS	1-X36	630	RIXSON
1 CLOSER	351 SERIES		SARGENT
2 WEATHER SEAL SET		630	PEMKO
1 THRESHOLD		630	PEMKO

7 - DOOR C19

6 HINGES	TA 2714	US26D	MCKINNEY
1 ELECTRIC LOCK WITH LEVER(FAIL SAFE) FLUSHBOLT WITH 2 ACTIVE LEAFS	ND SERIES GRADE 1, CYLINDRICAL	US26D	SCHLAGE
2 CLOSERS	351 SERIES	US26D	IVES
			SARGENT

8 - EXISTING DOORS 5,9,13,C12, 22,25,25A,25B, 26, 26A, 27

1 SURFACE MOUNTED CLOSER	351 SERIES		SARGENT
--------------------------	------------	--	---------

9 - EXISTING DOOR 23A

2 SURFACE MOUNTED CLOSER	351 SERIES		SARGENT
--------------------------	------------	--	---------

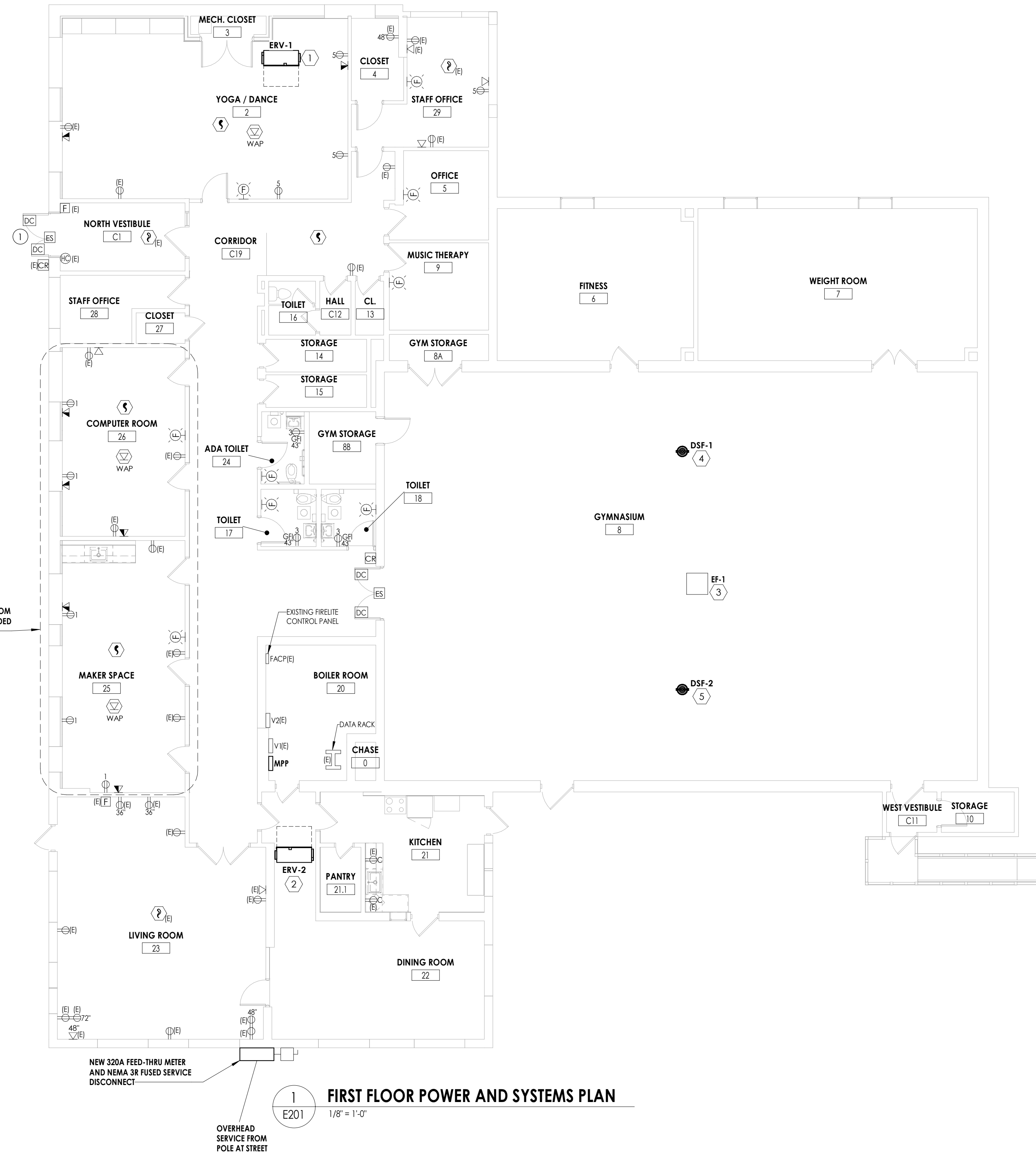
HARDWARE NOTES:

- 1 COORDINATE ELECTRIC LOCKING DOORS WITH OWNER'S ACCESS CONTROL VENDOR: CASCO SECURITY SYST
CONTACT: WALLY CARIERO - 716-481-1037
- 2 PROVIDE ALL NECESSARY HARDWARE TO PROVIDE A COMPLETE INSTALLATION FOR EACH DOOR.
- 3 PROVIDE 3 DOOR SILENCERS PER SINGLE DOOR, 6 PER DOUBLE DOOR
- 4 PROVIDE WALL MOUNTED DOOR STOPS: IVES WS401 AT ALL NEW DOORS
- 5 ALTERNATE: REPLACE ALL CYLINDERS IN EXISTING EXTERIOR AND INTERIOR DOORS WITH SCHLAGE ND SERII

EQUIPMENT WIRING SCHEDULE										
ITEM #	MARK	VOLTS	PH	HP	FLA	WIRING / CONDUIT	BREAKER	PANEL	CCT	REMARKS
1	ERV-1	240 V	1		10 A	(2)#12, #12G IN 3/4" C	15/1	MPP	7,9	
2	ERV-2	240 V	1		10 A	(2)#12, #12G IN 3/4" C	15/1	MPP	11,13	
3	EF-1	240 V	1	1	9 A	(2)#12, #12G IN 3/4" C	15/2	MPP	15,17	
4	DSF-1	120 V	1		1 A	(2)#12, #12G IN 3/4" C	20/1	MPP	19	
5	DSF-2	120 V	1		1 A	(2)#12, #12G IN 3/4" C	20/1	MPP	19	

PANEL: MPP										
LOCATION: BOILER ROOM 20			A.I.C. RATING: 42 KAIC							
VOLTAGE: 120/240V-1Ø-3 wire-400A			MCB RATING: 400/2							
FED FROM: UTILITY			MAIN BUS RATING: 400 A							
MOUNTING: Surface										
CKT	BRKR	LOAD DESCRIPTION	A (VA)	B (VA)	LOAD DESCRIPTION	BRKR	CKT			
1	20	1	900	0	EXISTING EXIT SIGN CIRCUIT	1	20	2		
3	20	1		540				4		
5	20	1	720					6		
7	15	2		1212				8		
9	15	2	1212					10		
11	15	2	1212					12		
13	15	2	1212					14		
15	15	2	1080		1080			16		
17	15	2	1080		240			18		
19	20	1						20		
21								22		
23								24		
25								26		
27								28		
29								30		
31	20	1		0				32		
33	20	1	0					34		
35	20	1	0					36		
37	20	1	0					38		
39	20	1	0	0	SUB-FEED			40		
41	20	1	0	0			2	200	42	
TOTAL LOAD			5124 VA	4284 VA						

ALL DEVICES INDICATED IN COMPUTER ROOM 26 AND MAKER SPACE 25 SHALL BE PROVIDED AND INSTALLED BY OWNER



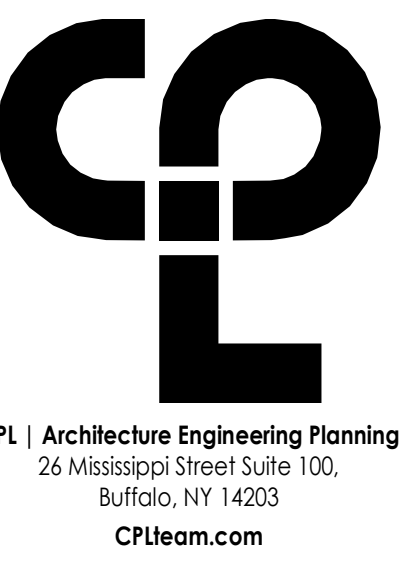
1 FIRST FLOOR POWER AND SYSTEMS PLAN
1/8" = 1'-0"

GENERAL NOTES

- A. (E) - EXISTING TO REMAIN, ANY DEVICE, AS WELL AS ITS ASSOCIATED CIRCUITING AND CONDUIT, LABELED "E" SHALL REMAIN, UNLESS OTHERWISE NOTED.
- B. NEW FIRE ALARM DEVICES SHOWN SHALL BE COMPATIBLE WITH AND CONNECTED TO EXISTING FIRE-LITE MS-9050UD FIRE ALARM CONTROL PANEL SERVING BUILDING LOCATED IN "BOILER ROOM 20". CONTRACTOR SHALL BE RESPONSIBLE FOR ALL ASSOCIATED DEVICES, CABLING, FINAL TERMINATIONS, PROGRAMMING, TESTING, ETC.
- C. ALL NEW RECEPTACLES SHALL BE TAMPER RESISTANT.
- D. REFER TO EQUIPMENT WIRING SCHEDULE ON THIS SHEET FOR EQUIPMENT TAG ("E") CIRCUITING INFO.
- E. UNLESS NOTED OTHERWISE, CONNECT NEW 120V DEVICES AND RECEPTACLES SHOWN TO A 20/1 CIRCUIT BREAKER IN PANEL "MPP" AT CIRCUIT NUMBER INDICATED ADJACENT TO DEVICE. WIRE WITH (2)#12, #12GND, IN 3/4" CONDUIT.
- F. FOR NEW DATA DROPS SHOWN, THE CONTRACTOR SHALL PROVIDE A FLUSH MOUNT DOUBLE-GANG JUNCTION BOX WITH SINGLE GANG DEVICE RING, PROVIDE 1" EMT CONDUIT FROM BOX WITHIN WALL AND ELBOW ABOVE FINISHED CEILING SPACE. PROVIDE (2) RINGS CAT 4 JACKS, BRACKETS, FACEPLATE AND TWO CATEGORY 6 CABLES TO EXISTING DATA RACK IN BOILER ROOM.
- G. ALL NEW SYSTEMS CABLING SHALL BE ROUTED UP INTO AND RUN HORIZONTALLY WITHIN ATTIC. SPACE TO AVOID HARD GYPSUM CEILING AREAS. CABLING SHALL BE SUPPORTED VIA J-HOOKS ABOVE CEILINGS AT INTERVALS NOT EXCEEDING 6'-0" AFF.
- H. NEW DOOR ACCESS CONTROL DEVICES SHALL BE DE-ENERGIZE AND ALLOW ACCESS UPON ACTIVATION OF FIRE ALARM SYSTEM.
- I. CONTRACTOR SHALL ENGAGE OWNER PREFERRED VENDOR FOR ACCESS CONTROL SHOWN. CONTRACTOR SHALL PROVIDE ALL ASSOCIATED LABOR AND MATERIALS.
PREFERRED VENDOR IS WALLY CARRIERO AT CASCO SECURITY
P: 716-481-4300
E: wcarriero@cascosecurity.com

KEY NOTES

- 1. CONNECT EXISTING CIRCUIT THAT SERVED PREVIOUS POWER OPERATOR TO NEW, EXTEND CIRCUIT AS REQUIRED, PROVIDE NEW ACCESS CONTROL DEVICES AND ASSOCIATED CABLING AS INDICATED, EXTEND EXISTING CABLING FROM EXISTING CARD READER AS REQUIRED, DOOR ACCESS CONTROL SHALL DROP OUT UPON ACTIVATION OF FIRE ALARM SYSTEM.



PROJECT INFORMATION

Project Number: <16128.02>
Client Name: OLIV HUMAN SERVICES

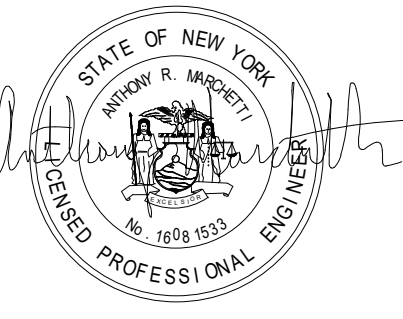
PROJECT ADDRESS

Project Address: 100 MARTIN ROAD
LACKAWANNA, NEW YORK 14218

PROJECT ISSUE & REVISION SCHEDULE

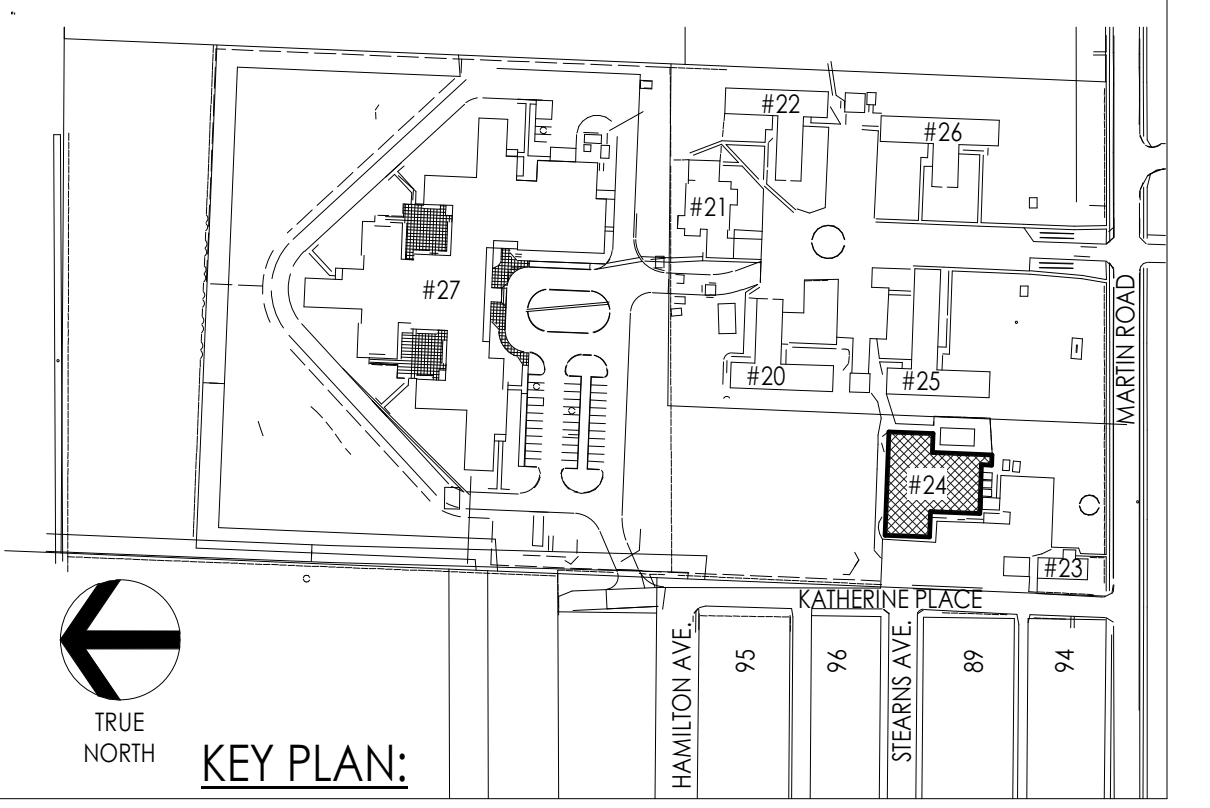
Rev	Date	Description
1	04/28/2022	ADDENDUM 1

PROFESSIONAL STAMPS



SHEET INFORMATION

Scale: 1/8" = 1'-0"
Project Status: BID DOCUMENTS
Drawing Title: FIRST FLOOR POWER AND SYSTEMS PLAN
Drawing Number:



E201