

LEGEND

TYP.	TYPICAL
U/F	UNDER FLOOR
RPZ	REDUCED PRESSURE ZONE ASSEMBLIES
MC	MECHANICAL CONTRACTOR
GC	GENERAL CONTRACTOR
CONT.	CONTINUATION
N/A	NOT APPLICABLE
PC	PLUMBING CONTRACTOR
RM.	ROOM
BLDG.	BUILDING
KEC	KITCHEN EQUIPMENT CONTRACTOR
HVAC	HEATING, VENTILATING, AIR CONDITIONING
F/#	FOR/NUMBER OF HEADS

SPRINKLER HEADS SHALL BE QUICK RESPONSE TYPE AS REQUIRED BY CODE. CONTRACTOR TO CONSULT WITH SPECIFICATIONS REGARDING EXPOSED SPRINKLER HEAD FINISH BEFORE ORDERING.

SCHEDULE OF SPRINKLER HEADS

SYMBOL	DESCRIPTION
☉	Pendant Semi-recessed head with white finish and upright sprinkler head, 1/2" orifice, 155°F. <i>UL Listed</i> and FM approved. "Rooster Style" – Reliable Sprinkler or equal.
☒	Pendant fully-recessed anti-corrosion head with finish cover plate, 1/2" orifice, 155°F. <i>UL Listed</i> and FM approved. Reliable Sprinkler F1FR-56 series or Viking VK302 with ENT Coating.
☒	Dry Pendant Semi-recessed head with white finish and upright sprinkler head, 1/2" orifice, 155°F. <i>UL Listed</i> and FM approved. "Rooster Style" – Reliable Sprinkler or equal.
☒	Full-(concealed) head with white finish, 1/2" orifice, 165°F. <i>UL Listed</i> and FM approved. Reliable Sprinkler G5-56 series or equal.
○	Upright brass head, 1/2" orifice, 210°F. <i>UL Listed</i> and FM approved. Reliable Sprinkler or equal.
⊗	Anti-corrosion Upright head with corrosion resistant polyester coating, 1/2" orifice, 210°F. <i>UL Listed</i> and FM approved. Reliable Sprinkler F1FR-56 series or equal.
⊕	Fully-recessed Sidewall type head with white finish, 1/2" orifice, 165°F. <i>UL Listed</i> and FM approved. Quick Response, Extended Coverage. Reliable Sprinkler G6-80 series or equal.
△	Sidewall type head with white finish, 1/2" orifice, 155°F. <i>UL Listed</i> and FM approved. Reliable Sprinkler or equal.
▲	Dry Sidewall type head with white finish and white escutcheon, 1/2" orifice, 155°F. <i>UL Listed</i> and FM approved. Reliable Sprinkler or equal.

FIRE PROTECTION SYSTEMS SPECIFICATIONS

- The contractor shall be responsible for a complete turn key installation using Underwriter Laboratories UL listed products including design, obtaining approvals and coordination with other trades. Install to meet NFPA 13, NFPA 72, NFPA 101, and the local Authority Having Jurisdiction requirements.
- Sprinkler heads, mains, runouts, tailbacks, sprigs etc. shall be provided as follows:
 - The fire protection contractor shall provide services for this project on a design build basis. Provide all required materials and designs for a 100% complete, functional and code compliant installation. Provide piping drawings, schematics, material specifications etc. with flow calculations to the local jurisdiction having authority for review and approval prior to installation. All prospective bidders shall visit the site prior to bid submission to verify field conditions and scope of work. Coordinate main fire protection service size requirements and all locations of fire protection mains serving the building with the Civil Engineer and Architect prior to bid submission. Provide flow and tamper switches as required and coordinate terminations with the electrical contractor. Main fire protection service is existing, provide new drops to new sprinkler heads.
- Sprinkler head locations shall be used as a guide for bid. Sprinkler locations show approximate locations with full rcp and field coordination to be provided by the successful contractor. Provide all heads as required per NFPA 13. Existing fire protection service is in place. Verify all piping and head requirements with hydraulic calculations.
- The suggested sprinkler locations are not intended to limit the contractor from providing another design that may be more economical and still meet the requirements of the local Authority Having Jurisdiction and NFPA.
- Comply with Architectural requirements for painting interior piping. Paint exposed, interior metal piping, valves, and piping specialties, except components, with factory-applied paint or protective coating. Exposed sprinkler heads shall be piped according to color requirements below.

W.B. Light Industrial Coating: MPI INT 5.1B – G5. Prime Coat: Rust Inhibitive Primer. (MPI #107). Intermediate Coat: W.B. Light Industrial Coating (MPI #153). Topcoat: W.B. Light Industrial Coating (MPI #153). Color: Black.

Damage and Touchup: Repair marred and damaged factory-applied finishes with materials and by procedures to match original factory finish.
- Working plans and computerized hydraulic calculations shall be prepared by a minimum Level 3 N.I.C.E.T. Certified Sprinkler Layout Designer. Submit working plans and hydraulic calculations signed and sealed by a Professional Fire Protection Engineer registered in the state in which the project is located, to Authorities that Have Jurisdiction. Design documents are for permit purposes. The design is not intended to limit the contractor from providing another design that may be more economical and still meet the requirements of the Local Authority Having Jurisdiction. All drawings, including As-Builts, shall be submitted on disc using AUTO CAD.
- The hydraulic calculations shall include the pressure drop through all pipe, fittings and devices, including the pressure drop through the reduced pressure principle backflow preventer, from the most hydraulic remote point of the sprinkler system to the location of the test hydrant.
- Submit drawings to local fire dept. and obtain necessary approvals, permits and certificates prior to submission to the engineer for final review.
- Where required by code or directed by local authorities, contractor shall provide seismic hanging & constraints on all piping in complete accordance with the latest issue of the State Plumbing Building Code, local codes and NFPA.
- The fire protection contractor shall provide a guarantee covering all design, installation, material and workmanship for five years following date of acceptance by Owner.
- The hydraulic calculations shall be based on the flow test data listed below (this information shall be provided by the fire protection contractor at submittal of shop drawings and calculations):
 - Static pressure psi.
 - Residual pressure psi.
 - Flow gpm.
 - Flow/test hydrant locations.
 - Date of test.
 - Time of test.
 - Responsible party conducting test.
 - Hydrant outlet discharge coefficient.
- Piping shall be sloped to drain back to sprinkler riser. Auxiliary drainage in accordance with NFPA 13 shall be provided for all trapped sections of pipe.
- Pipe all drains and inspector's test to outside, or discharge to a drain approved by the owner for sprinkler discharge.
- Provide automatic sprinkler below obstructions 48 inches and wider. (platforms, ductwork, stairways, unit heater, etc).
- Refer to the architectural drawings for reflected ceiling plans and coordinate all work with all other contractors prior to installation of the sprinkler system. Up front field coordination between all contractors is required due to limited space constraints.

NOTICE

This document, the property of, prepared and issued by the architect, is submitted for the specific project named _____ and the recipient by accepting this document assumes custody and agrees that this document will not be copied or reproduced in part or in whole, and any special features peculiar to this design shall not be incorporated in any other project, unless prior agreement has been obtained in writing. These documents will be returned immediately upon completion of the project or upon the request of the architect. This document is the exclusive property of the architect, no rights to ownership are transferable, or shall be lost by the filing of this document with any and all public authorities for the purpose of compliance with Codes and or Ordinances, i.e. Building Permit, etc.



**Bryant &
Stratton**
1259 Central Ave.
Albany, NY 12205

ISSUE:
2021-06-29: BID/PERMIT SET

SA PROJECT TEAM: PRINCIPAL P.Silvestri
PROJ. ARCH. S.Hunt DRAFTER _____
JOB CAPT. _____ INTERIORS N.Catuzza

SEAL:

TITLE:
**FIRE PROTECTION
LEGENDS,
SCHEDULES, &
SPECIFICATIONS**



**SILVESTRI
ARCHITECTS + PC**

1321 MILLERSPORT HWY PH. 716.691.0900
AMHERST, NY 14221 FAX 716.691.4773

SA JOB #: **14082.07** DATE: **6-29-2021**

DRAWING #:
FP-1

GENERAL FIRE PROTECTION DRAWING NOTES:

1. FIELD VERIFY ALL EXISTING HEADS AND PIPING LOCATIONS, SIZES, ETC. IN WORK AREA. ALL HEADS ARE TO BE RELOCATED/REMOVED AND PIPING SHALL BE REMOVED AS REQUIRED FOR NEW LAYOUT - SEE DRAWING NOTES. ALL REMOVED HEADS AND PIPING ARE TO BE DISPOSED OF PROPERLY PER NEW YORK STATE CODES. EXISTING PIPING AND ZONING CONTROLS ARE TO REMAIN AND SHALL BE REUSED AS MUCH AS POSSIBLE. SHOULD ANY EXISTING PIPING, VALVES, OR CONTROLS, NOT PASS THE REQUIRED TESTS, THEY ARE TO BE REPLACED IN KIND. COORDINATE WITH ELECTRICAL CONTRACTOR AS REQUIRED SHOULD ANY CONTROLS NEED TO BE REPLACED. CONTRACTOR TO PERFORM NEW HYDRAULIC CALCULATIONS PER SPECIFICATIONS BEFORE INSTALLING ANY NEW ELEMENTS OF THE SYSTEM.
2. COORDINATE ALL NEW PIPING AND FINAL HEAD LOCATIONS WITH EXISTING STRUCTURE AND ALL OTHER WORK - EXISTING AND NEW MECHANICAL, PLUMBING, ELECTRICAL, ETC.

FIRE PROTECTION DRAWING NOTES:

1. PROVIDE WET SPRINKLER SYSTEM INSTALLED AS PER NFPA 13, TYPICAL FOR CORRIDORS, CLASSROOMS, OFFICES, AND RESTROOMS. THE SPACES ARE LIGHT HAZARD. SEE GENERAL NOTES.

NOTICE

This document, the property of, prepared and issued by the architect, is submitted for the specific project named _____ and the recipient by accepting this document assumes custody and agrees that this document will not be copied or reproduced in part or in whole, and any special features peculiar to this design shall not be incorporated in any other project, unless prior agreement has been obtained in writing. These documents will be returned immediately upon completion of the project or upon the request of the architect. This document is the exclusive property of the architect, no rights to ownership are transferable, or shall be lost by the filing of this document with any and all public authorities for the purpose of compliance with Codes and or Ordinances, i.e. Building Permit, etc.

EBS ENGINEERING, PC
 ENGINEERED BUILDING SYSTEMS
 MECHANICAL ELECTRICAL ENGINEERS
 2568 WALDEN AVENUE
 SUITE 107
 CHEEKTOWAGA, NEW YORK 14225
 PHONE: (716) 836-9600
 FAX: (716) 836-9636
 EMAIL: MAIL@EBSPE.COM
 WEBSITE: WWW.EBSPE.COM
 COPYRIGHT © 2021 ENGINEERED BUILDING SYSTEMS

Bryant & Stratton
 1259 Central Ave.
 Albany, NY 12205

ISSUE:
 2021-06-29: BID/PERMIT SET

SA PROJECT TEAM: PRINCIPAL P.Silvestri
 PROJ. ARCH. S.Hunt DRAFTER _____
 JOB CAPT. _____ INTERIORS N.Catuzza

SEAL:

TITLE:
**FIRE PROTECTION
 PARTIAL FIRST
 FLOOR PLAN**



**SILVESTRI
 ARCHITECTS • PC**

1321 MILLERSPORT HWY PH. 716.691.0900
 AMHERST, NY 14221 FAX 716.691.4773

SA JOB #: 14082.07 DATE: 6-29-2021

DRAWING #: **FP-2**



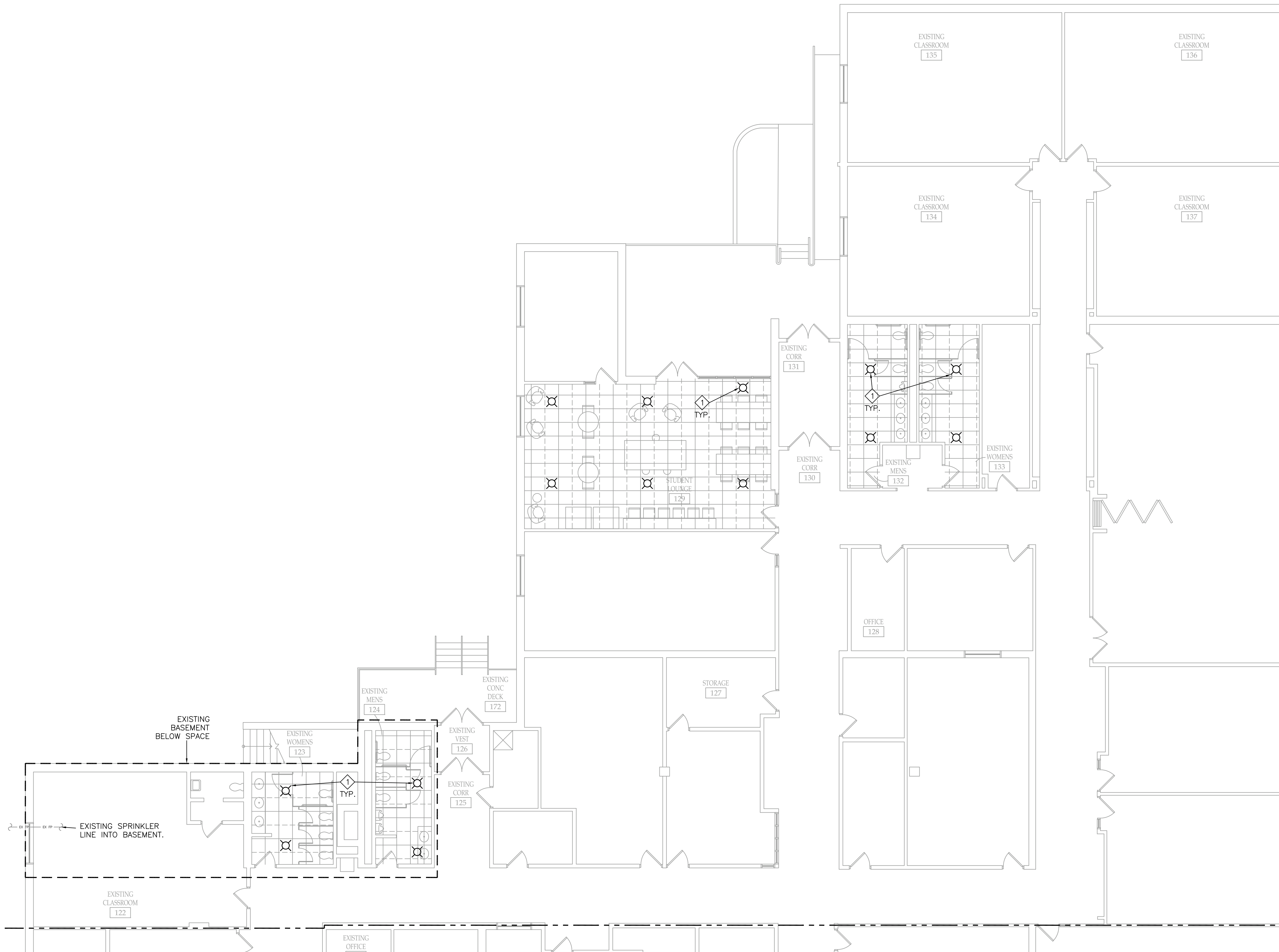
1 FIRE PROTECTION - PARTIAL 1ST FL. PLAN
 FP-2 SCALE: 1/8" = 1'-0"

FIRE PROTECTION DRAWING NOTES:

1. PROVIDE WET SPRINKLER SYSTEM INSTALLED AS PER NFPA 13, TYPICAL FOR CORRIDORS, CLASSROOMS, OFFICES, AND RESTROOMS. THE SPACES ARE LIGHT HAZARD. SEE GENERAL NOTES.

GENERAL FIRE PROTECTION DRAWING NOTES:

1. FIELD VERIFY ALL EXISTING HEADS AND PIPING LOCATIONS, SIZES, ETC. IN WORK AREA. ALL HEADS ARE TO BE RELOCATED/REMOVED AND PIPING SHALL BE REMOVED AS REQUIRED FOR NEW LAYOUT - SEE DRAWING NOTES. ALL REMOVED HEADS AND PIPING ARE TO BE DISPOSED OF PROPERLY PER NEW YORK STATE CODES. EXISTING PIPING AND ZONING CONTROLS ARE TO REMAIN AND SHALL BE REUSED AS MUCH AS POSSIBLE. SHOULD ANY EXISTING PIPING, VALVES, OR CONTROLS, NOT PASS THE REQUIRED TESTS, THEY ARE TO BE REPLACED IN KIND. COORDINATE WITH ELECTRICAL CONTRACTOR AS REQUIRED SHOULD ANY CONTROLS NEED TO BE REPLACED. CONTRACTOR TO PERFORM NEW HYDRAULIC CALCULATIONS PER SPECIFICATIONS BEFORE INSTALLING ANY NEW ELEMENTS OF THE SYSTEM.
2. COORDINATE ALL NEW PIPING AND FINAL HEAD LOCATIONS WITH EXISTING STRUCTURE AND ALL OTHER WORK - EXISTING AND NEW MECHANICAL, PLUMBING, ELECTRICAL, ETC.



1 FIRE PROTECTION - PARTIAL 1ST FL. PLAN
 FP-3 SCALE: 1/8" = 1'-0"

NOTICE
 This document, the property of, prepared and issued by the architect, is submitted for the specific project named _____ and the recipient by accepting this document assumes custody and agrees that this document will not be copied or reproduced in part or in whole, and any special features peculiar to this design shall not be incorporated in any other project, unless prior agreement has been obtained in writing. These documents will be returned immediately upon completion of the project or upon the request of the architect.
 This document is the exclusive property of the architect, no rights to ownership are transferable, or shall be lost by the filing of this document with any and all public authorities for the purpose of compliance with Codes and or Ordinances, i.e. Building Permit, etc.

EBS ENGINEERING, PC
 ENGINEERED BUILDING SYSTEMS
 MECHANICAL ELECTRICAL ENGINEERS
 2508 WALDEN AVENUE
 SUITE 107
 CHEEKTOWAGA, NEW YORK 14225
 PHONE: (716) 836-9600
 FAX: (716) 836-9636
 EMAIL: MAIL@EBSPE.COM
 WEBSITE: WWW.EBSPE.COM
 COPYRIGHT © 2021 ENGINEERED BUILDING SYSTEMS

Bryant & Stratton
 1259 Central Ave.
 Albany, NY 12205

ISSUE:
 2021-06-29: BID/PERMIT SET

SA PROJECT TEAM: PRINCIPAL P.Silvestri
 PROJ. ARCH. S.Hunt DRAFTER _____
 JOB CAPT. _____ INTERIORS N.Catuzza

SEAL:

TITLE:
**FIRE PROTECTION
 PARTIAL FIRST
 FLOOR PLAN**

**SILVESTRI
 ARCHITECTS PC**
 1321 MILLERSPORT HWY PH. 716.691.0900
 AMHERST, NY 14221 FAX 716.691.4773

SA JOB #: 14082.07 DATE: 6-29-2021

DRAWING #: **FP-3**