

BID ADDENDUM No. 5

PROJECT NAME	The Williams 20 South Long Street Williamsville, NY 14221
LABELLA PROJECT No.:	2202196
DATE:	July 2, 2021
FROM:	LaBella Associates, D.P.C. 300 Pearl Street, Suite 130 Buffalo, NY 14202

Include this Addendum as part of the Bid Contract Documents. It supplements portions of the original specifications/project manual and drawings, the extent of which shall remain, except as revised herein:

Issued By:

Joseph Rudniski, Associate AIA

LaBella Associates | Project Associate



716-931-6510 **direct**
716-551-6281 **office**
300 Pearl Street, Suite 130
Buffalo, NY 14202
labellapc.com



CHANGES TO THE DRAWINGS

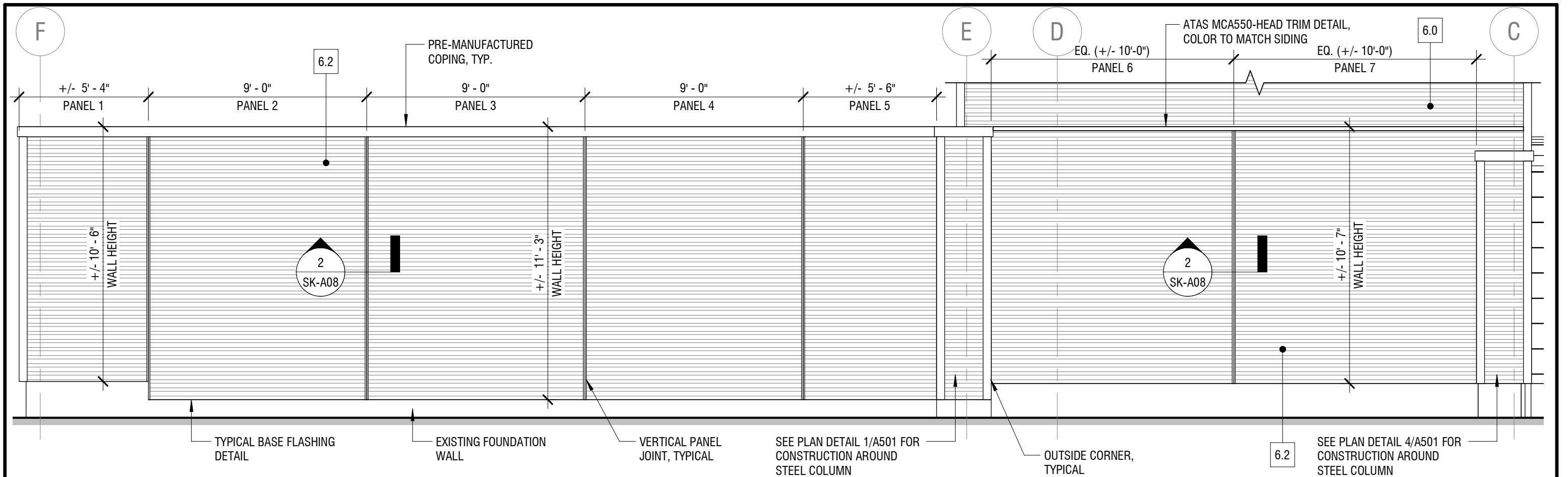
1. DRAWING A003 | Floor, Wall, Ceiling, and Roof Assemblies
 - A. **ADD** Wall assembly 6.2.
 - Due to the North exterior wall of the parking garage being located on the property line and adjacent to the exterior wall of an adjacent building (5353 Main Street), it was decided to make a section of the North exterior wall a panelized system to allow the contractor to construct and erect this system from within the project boundaries.
 - See attached construction sketch SK-A08 for more information.

2. DRAWINGS A201 & A202 | Exterior Elevations
 - A. Revised Wall Assembly designations.
 - Incorrect wall assembly designations were called out which did not reflect the desired orientation of exterior siding. Changes have been made on the attached A201 & A202 drawings with revision clouds and tags.
 - Orientation of exterior siding on the South Elevation (drawing A201) was incorrect and has been changed to reflect a horizontal installation. A vertical trim piece is now required to change in siding orientation (see note location on South elevation).

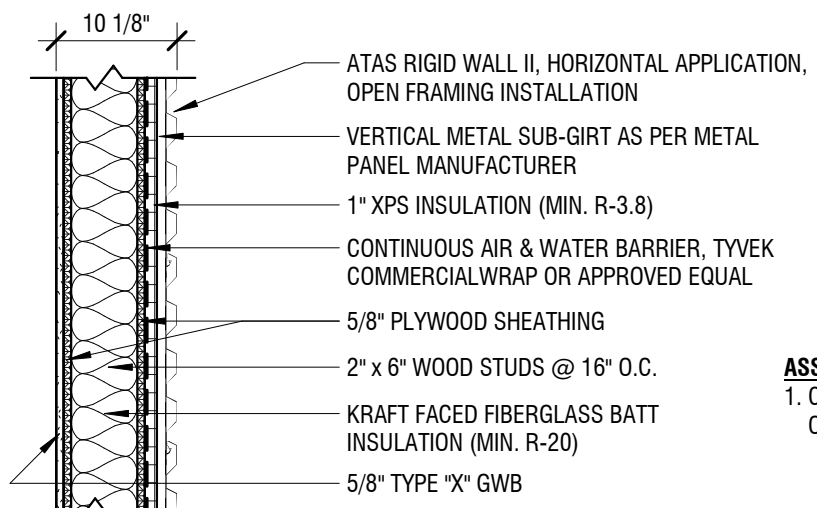
ATTACHMENTS:

1. Sketch SK-A08.
2. Drawings A201 & A202.

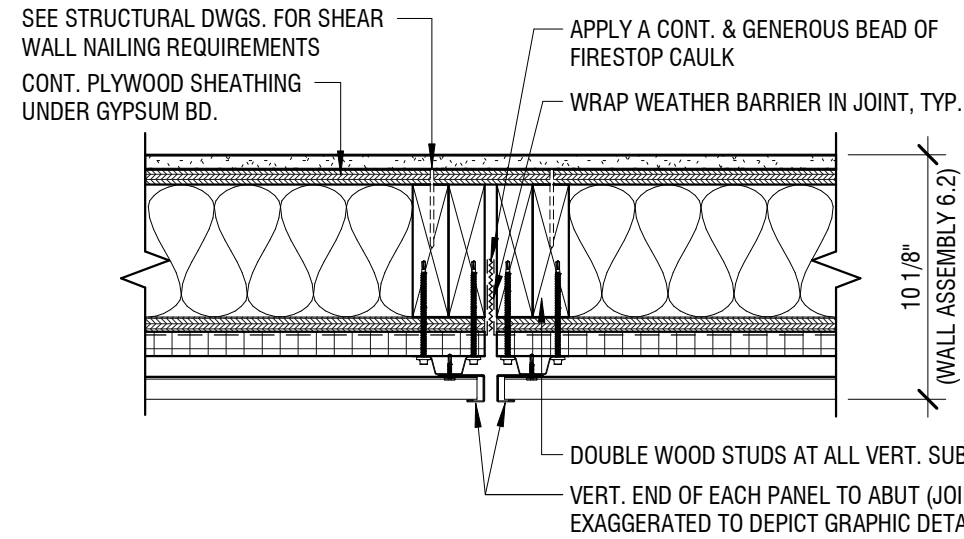
END OF BID ADDENDUM No.5



1 PARTIAL NORTH ELEVATION (@ PARKING GARAGE)
 SCALE: 1/4" = 1'-0"



ASSEMBLY NOTES:
 1. COORDINATE WITH STRUCTURAL DRAWINGS ON SHEAR WALL REQUIREMENTS.



2 PLAN DETAIL - PANEL TO PANEL VERT. JOINT
 SCALE: 1 1/2" = 1'-0"

6.2 CORRUGATED STYLE SINGLE SKIN STRUCTURAL METAL PANEL OVER WOOD STUDS

1 HOUR RATING
 (PER 2015 IBC, SECTION 722 - CALCULATED FIRE RESISTANCE, TABLES 722.6.2(1) & 722.6.2(2))

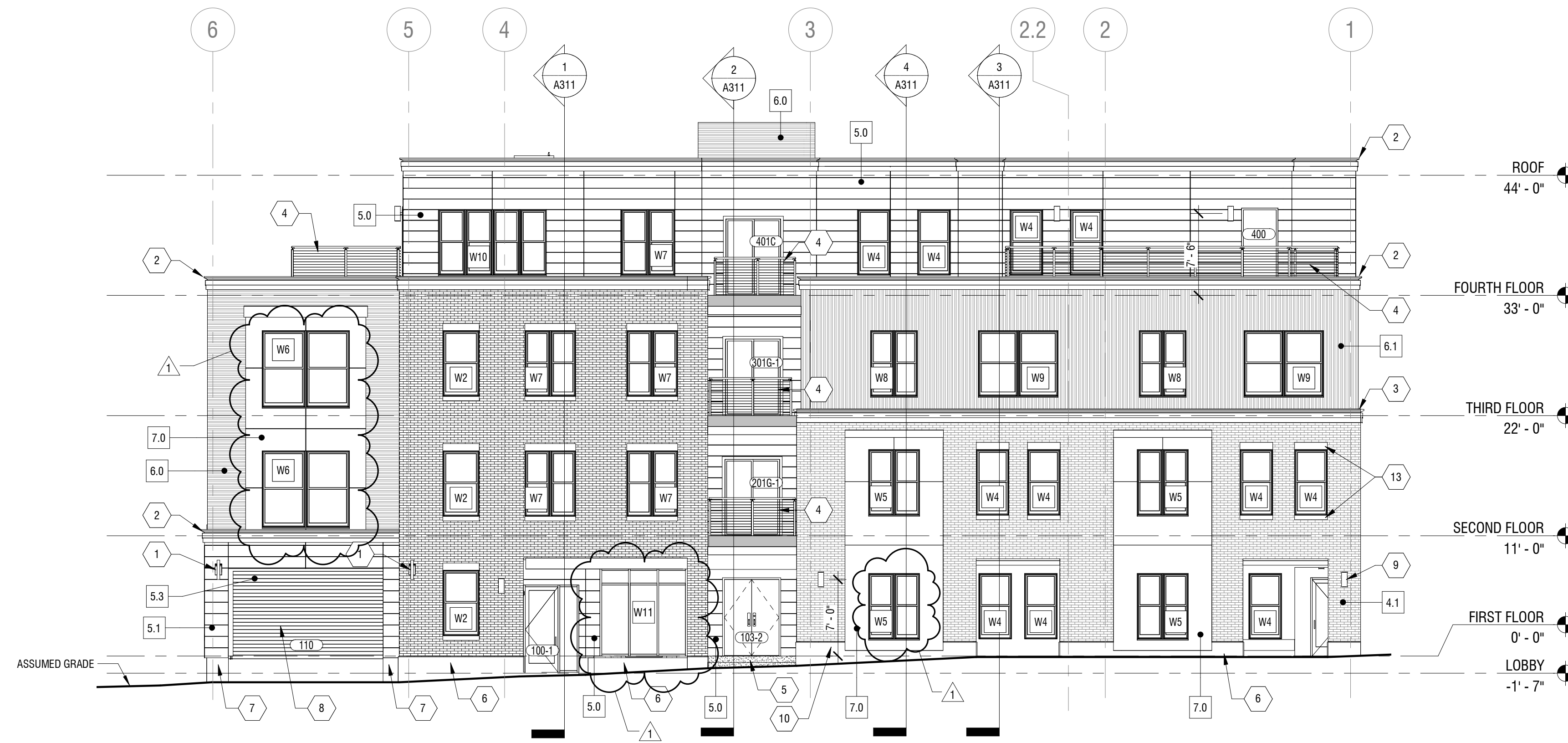
NEW WALL ASSEMBLY 6.2
 SCALE: 3/4" = 1'-0"

THIS NEW WALL ASSEMBLY ADDRESSES THE CONSTRUCTION REQUIRED TO PANELIZE THE NORTH ELEVATION EXTERIOR WALL FOR ERECTION WITHIN THE PROJECT BOUNDARIES WHILE MAINTAINING THE SPECIFIED FIRE RATING & SHEAR WALL CRITERIA SET FORTH IN THE CONSTRUCTION DOCUMENTS.

LaBella
 Powered by partnership.
 300 Pearl Street, Suite 130
 Buffalo, NY 14202
 716-551-6281
 labellapc.com

<small>It is a violation of New York Education Law Article 145 Sec. 7209, for any person, unless acting under the direction of a licensed architect, professional engineer, or land surveyor, to alter an item in any way. If an item bearing the seal of an architect, engineer, or land surveyor is altered, the altering architect, engineer, or land surveyor shall affix to the item their seal and notation "altered by" followed by their signature and date of such alteration, and a specific description of the alteration.</small>		ISSUED FOR:	
DRAWING NAME: NORTH EXTERIOR WALL PANELIZATION		DRAWN BY: JMR	DATE: 7/2/2021
PROJECT NAME: THE WILLIAMS 20 SOUTH LONG STREET WILLIAMSVILLE, NY 14221		PROJECT NO.: 2202196	DRAWING NUMBER: SK-A08

7/2/2021 9:54:03 AM



1 WEST ELEVATION (SOUTH LONG STREET)
SCALE: 1/8" = 1'-0"

CONSTRUCTION KEYED NOTES

1. PROVIDE IN WALL BLOCKING FOR EXTERIOR SIGNAGE SUPPORT. COORDINATE WITH SIGN MANUFACTURER.
2. PREMANUFACTURED METAL COPING.
3. SHOP FABRICATED METAL COPING.
4. DECK WITH SQUARE POST AND CABLE INFILL RAILING SYSTEM.
5. CONCRETE STEPS AND LANDING.
6. PRECAST CONCRETE WATER TABLE AT BRICK VENEER EXTERIOR WALLS.
7. PAINTED CONCRETE FOUNDATION WALL.
8. GARAGE OVERHEAD SECTIONAL DOOR.
9. TYPICAL EXTERIOR LIGHT FIXTURE. REFER TO ELECTRICAL DRAWINGS FOR MORE INFORMATION.
10. FIRE DEPARTMENT CONNECTION. REFER TO PLUMBING DRAWINGS AND COORDINATE WITH PRECAST CONTRACTOR.
11. METAL CAP FLASHING, COLOR TO MATCH SIDING.
12. ALTERNATE NO. 2 (+/-) 8" LONG X 3'-0" HIGH JULIETTE BALCONY BY ULTRA ALUMINUM MANUFACTURING INC., ALUMINUM ULTRA SIGNATURE JULIETTE BALCONY OR APPROVED EQUAL. ALL RAILING COMPONENTS TO BE EXTRUDED 6005-T5 ALLOY WITH WELDED CORNERS, BALUSTERS, AND FLANGES FOR SECURE CONNECTION TO THE BUILDING. PROVIDE APPROPRIATE FASTENERS AS RECOMMENDED BY BALCONY MANUFACTURER. PROVIDE AND INSTALL 2X WOOD BLOCKING IN-WALL AND BEHIND EXTERIOR SIDING AS REQUIRED FOR TOP AND BOTTOM FLANGE CONNECTIONS EACH SIDE OF WINDOW. POWDER COAT FINISH TO COMPLY WITH AAMA 2604 STANDARDS. COLOR TO BE SELECTED FROM MANUFACTURER'S STANDARD COLOR SELECTION.
13. PRECAST CONCRETE ANTEL AND SILL UNITS FOR ALL WINDOW MASONRY OPENINGS.

It is a violation of New York Education Law Article 145 Sec.7209, for any person, unless acting under the direction of a licensed architect, professional engineer, or land surveyor, to alter an item in any way. If an item bearing the seal of an architect, engineer, or land surveyor is altered; the altering architect, engineer, or land surveyor shall affix to the item their seal and notation "altered by" followed by their signature and date of such alteration, and a specific description of the alteration.

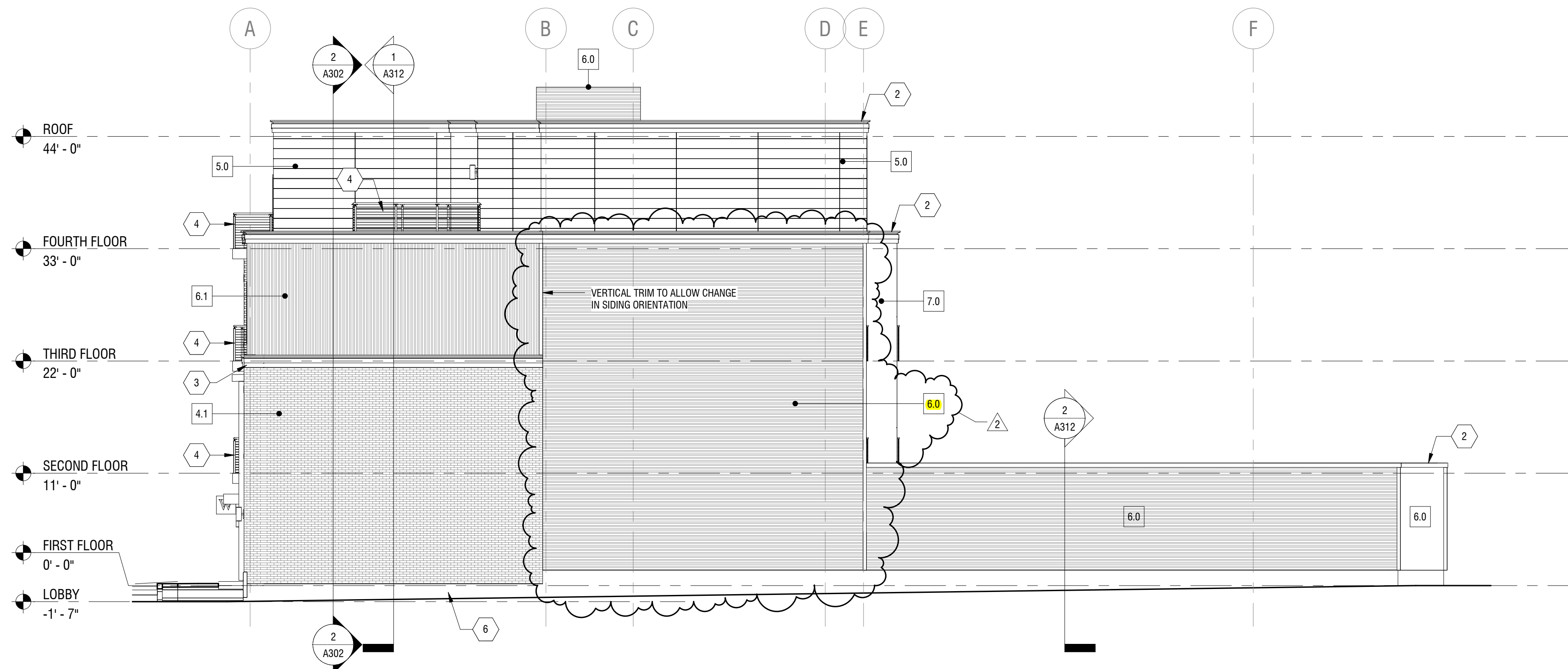
© 2020 LaBella Associates

20 SOUTH LONG STREET ASSOCIATES

5500 MAIN STREET, SUITE 215
WILLIAMSVILLE, NY 14221

THE WILLIAMS

20 SOUTH LONG STREET
WILLIAMSVILLE, NY 14221



2 SOUTH ELEVATION
SCALE: 1/8" = 1'-0"

NO.	DATE	DESCRIPTION
2	7/2/2021	BID ADDENDUM No.5
1	6/14/2021	BID ADDENDUM No.3

PROJECT NUMBER: 2202196

DRAWN BY: JMR

REVIEWED BY: RJN

ISSUED FOR: PERMIT

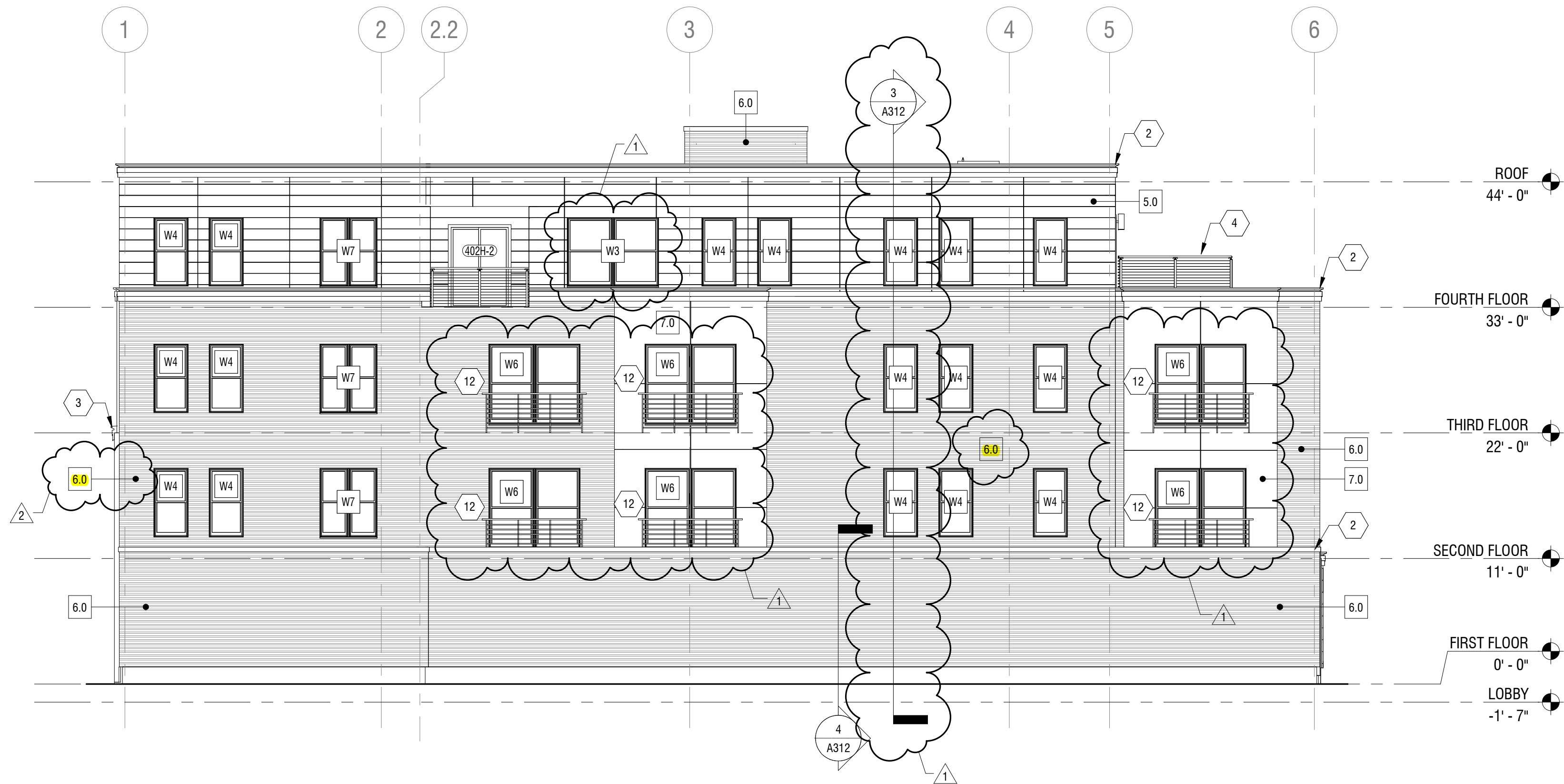
DATE: 23 APRIL 2021

DRAWING NAME:

EXTERIOR ELEVATIONS

DRAWING NUMBER:

A201



2 EAST ELEVATION
A202 SCALE: 1/8" = 1'-0"

CONSTRUCTION KEYED NOTES

1. PROVIDE IN WALL BLOCKING FOR EXTERIOR SIGNAGE SUPPORT. COORDINATE WITH SIGN MANUFACTURER.
2. PREMANUFACTURED METAL COPING.
3. SHOP FABRICATED METAL COPING.
4. DECK WITH SQUARE POST AND CABLE INFILL RAILING SYSTEM.
5. CONCRETE STEPS AND LANDING.
6. PRECAST CONCRETE WATER TABLE AT BRICK VENEER EXTERIOR WALLS.
7. PAINTED CONCRETE FOUNDATION WALL.
8. GARAGE OVERHEAD SECTIONAL DOOR.
9. TYPICAL EXTERIOR LIGHT FIXTURE. REFER TO ELECTRICAL DRAWINGS FOR MORE INFORMATION.
10. FIRE DEPARTMENT CONNECTION. REFER TO PLUMBING DRAWINGS AND COORDINATE WITH PRECAST CONTRACTOR.
11. METAL CAP FLASHING, COLOR TO MATCH SIDING.
12. ALTERNATE NO. 2: (+/-) 8'-8" LONG X 3'-0" HIGH JULIETTE BALCONY BY ULTRA ALUMINUM MANUFACTURING INC., ALUMINUM ULTRA SIGNATURE JULIETTE BALCONY OR APPROVED EQUAL. ALL RAILING COMPONENTS TO BE EXTRUDED 6061-T5 ALLOY WITH WELDED CORNERS, BALUSTERS, AND FLANGES FOR SECURE CONNECTION TO THE BUILDING. PROVIDE APPROPRIATE FASTENERS AS RECOMMENDED BY BALCONY MANUFACTURER. PROVIDE AND INSTALL 2X WOOD BLOCKING IN-WALL AND BEHIND EXTERIOR SIDING AS REQUIRED FOR TOP AND BOTTOM FLANGE CONNECTIONS EACH SIDE OF WINDOW. POWDER COAT FINISH TO COMPLY WITH AAMA 2604 STANDARDS. COLOR TO BE SELECTED FROM MANUFACTURER'S STANDARD COLOR SELECTION.
13. PRECAST CONCRETE INTEL AND GALL UNITS FOR ALL WINDOW MASONRY OPENINGS.

It is a violation of New York Education Law Article 145 Sec.7209, for any person, unless acting under the direction of a licensed architect, professional engineer, or land surveyor, to alter an item in any way. If an item bearing the seal of an architect, engineer, or land surveyor is altered; the altering architect, engineer, or land surveyor shall affix to the item their seal and notation "altered by" followed by their signature and date of such alteration, and a specific description of the alteration.

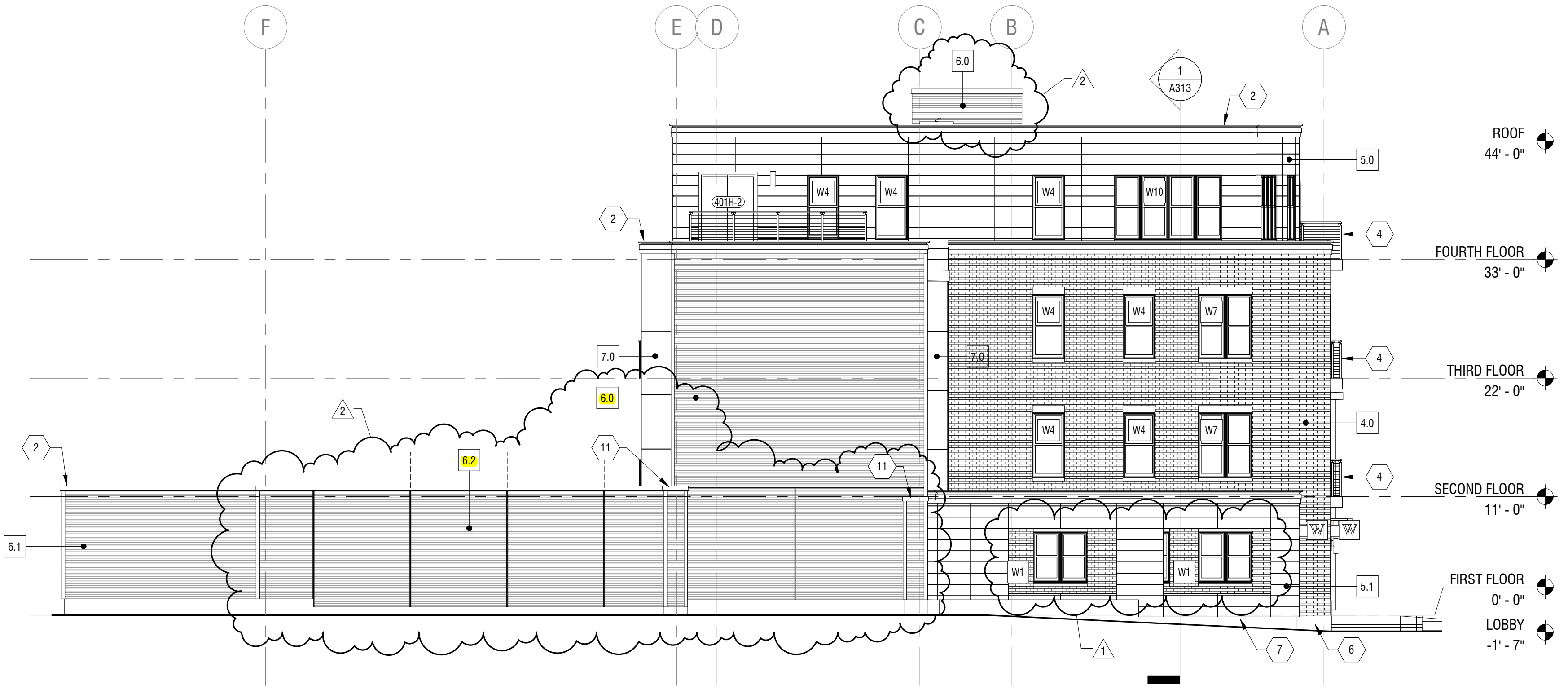
© 2020 LaBella Associates

20 SOUTH LONG STREET ASSOCIATES

5500 MAIN STREET, SUITE 215
WILLIAMSVILLE, NY 14221

THE WILLIAMS

20 SOUTH LONG STREET
WILLIAMSVILLE, NY 14221



1 NORTH ELEVATION
A202 SCALE: 1/8" = 1'-0"

NO.	DATE	DESCRIPTION
2	7/2/2021	BID ADDENDUM No.5
1	6/14/2021	BID ADDENDUM No.3

PROJECT NUMBER: 2202196

DRAWN BY: JMR

REVIEWED BY: RJN

ISSUED FOR: PERMIT

DATE: 23 APRIL 2021

DRAWING NAME:

EXTERIOR ELEVATIONS

DRAWING NUMBER:

A202