

January 19, 2021

ADDENDUM 1 – ALL TRADES

Bid Clarification

Bid date shall be February 2, 2021

Base bid should include all work called for on the drawings supplied to each contractor. Also include on the base bid an allowance of \$2,400.00 for gas connection to main.

The bond for this project should be shown separate from base bid.

Building permit cost should **NOT** be included in the base bid.

MEP contractors please provide a separate line item for hookups on all necessary carwash equipment located in the equipment corridor supplied by carwash equipment supplier.

Alternate bid for screw piles shall be supplied, separate from the base bid. – attached to this addendum are the site boring logs.

Drawings

Drawing A100 Foundation Plan– Has been revised to show the wall along the front portion of the property.

Drawing A101 Floor Plan – Has been revised to show the wall along the front portion of the property.

Drawing A200 Elevations – Has been revised to show the wall along the front portion of the property.

Drawing A300 Sections – Garden Wall Section 6 has been revised.

Drawing A301 Sections – Wall Section 1 has been revised to show a 4'-0" overhang on upper roof.

Hardware Schedule

Hardware Schedule is attached to this addendum

Add door from Equipment Corridor to Carwash Tunnel – door no. 13 – location to be determined.

Delete door 13 on door schedule and add new door 13 as stated above and called for on hardware schedule

Plumbing

Future Rest Room to be located in Office 3 (Northeast corner) – include in bid hot/cold water, sanitary, vents and floor drain connections to that area.

Sanitary sewer – location to be as per site drawing S-400.

All water heaters shall be 20 gal NOT 100 gal. as shown on drawings.

Electrical

Future Rest Room to be located in Office 3 (Northeast corner) – include in bid electrical for lights, outlets and venting fan.

James E. Boy, Architects

124 Linden Avenue, Kenmore, New York 14217 - 716-863-1380

Hardware Schedule

Door 1

From equipment corridor to exterior – hollow metal door and frame – double door

Hinges – 3/door – Stanley CB Series – Heavy duty

Exit Devices – Stanley Heavy Duty Exit Devices – QED100 Series - 2

Door Closer – Stanley Heavy Duty Grade 1 Door Closers – QDC200 Series – 2

Door 2

From back office area to equipment corridor – hollow metal door and frame

Hinges – 3 – Stanley CB Series – Heavy duty

Locksets – Stanley Heavy Duty Cylinder Locks QC1100 series

Door 3

From carwash back office area to rest room – hollow metal door and frame

Hinges – 3 – Stanley CB Series – Heavy duty

Locksets – Stanley Heavy Duty Cylinder Locks QC1100 series/with privacy lock

Door 4

From carwash back office area to office – hollow metal door and frame

Hinges – 3 – Stanley CB Series – Heavy duty

Locksets – Stanley Heavy Duty Cylinder Locks QC1100 series/with privacy lock

Door 5

From carwash office to back office area – hollow metal door and frame

Hinges – 3 – Stanley CB Series – Heavy duty

Locksets – Stanley Heavy Duty Cylinder Locks QC1100 series

Door 6

Aluminum door and frame

Push/pull with dead bolt lock and 3 hinges – Heavy Duty

James E. Boy, Architects

124 Linden Avenue, Kenmore, New York 14217 - 716-863-1380

Door 7

Overhead Door

Door 8

From carwash to exterior – aluminum door and frame

Push/pull with dead bolt lock and 3 hinges – Heavy Duty

Door 9

From dog wash to exterior – aluminum door and frame

Push/pull with dead bolt lock and 3 hinges – Heavy Duty

Door 10

From carwash to exterior – aluminum door and frame

Push/pull with dead bolt lock and 3 hinges – Heavy Duty

Door 11

Overhead Door

Door 12

From future rental space to exterior – aluminum door and frame

Push/pull with dead bolt lock and 3 hinges – Heavy Duty

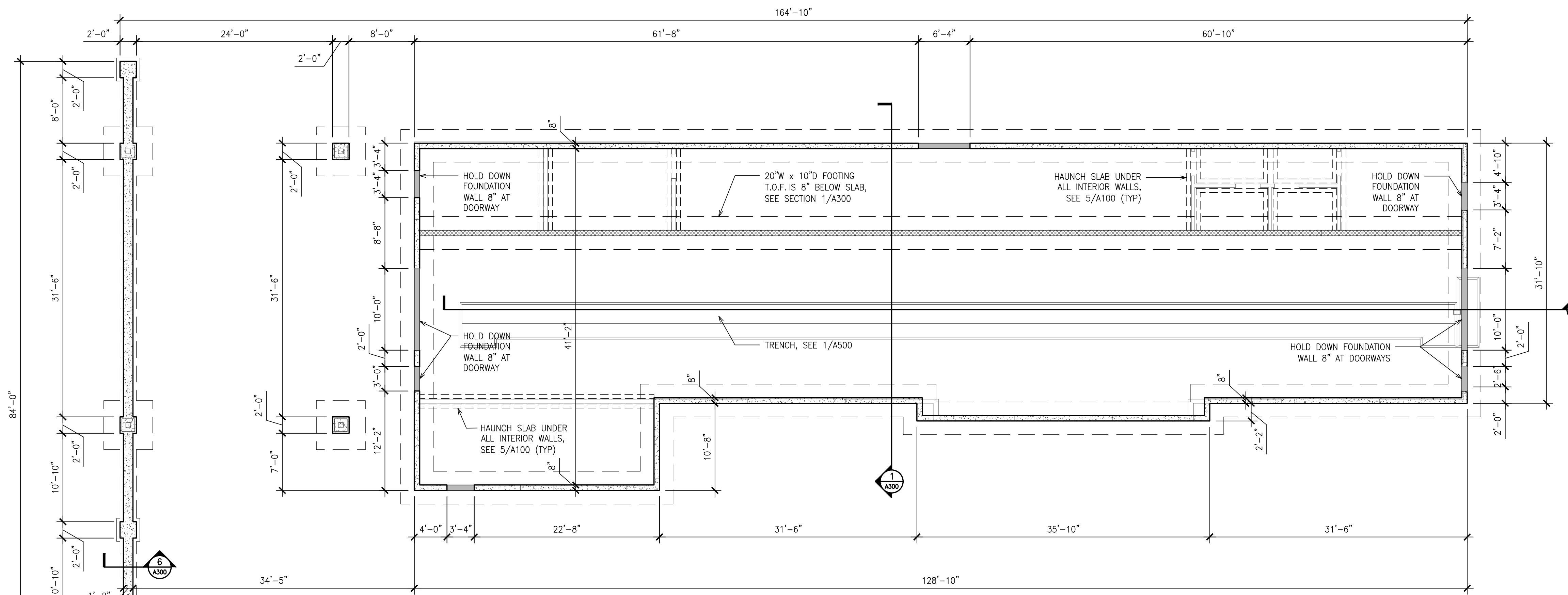
Door 13

From equipment corridor to carwash tunnel – hollow metal door and frame.

Hinges – 3/door – Stanley CB Series – Heavy duty

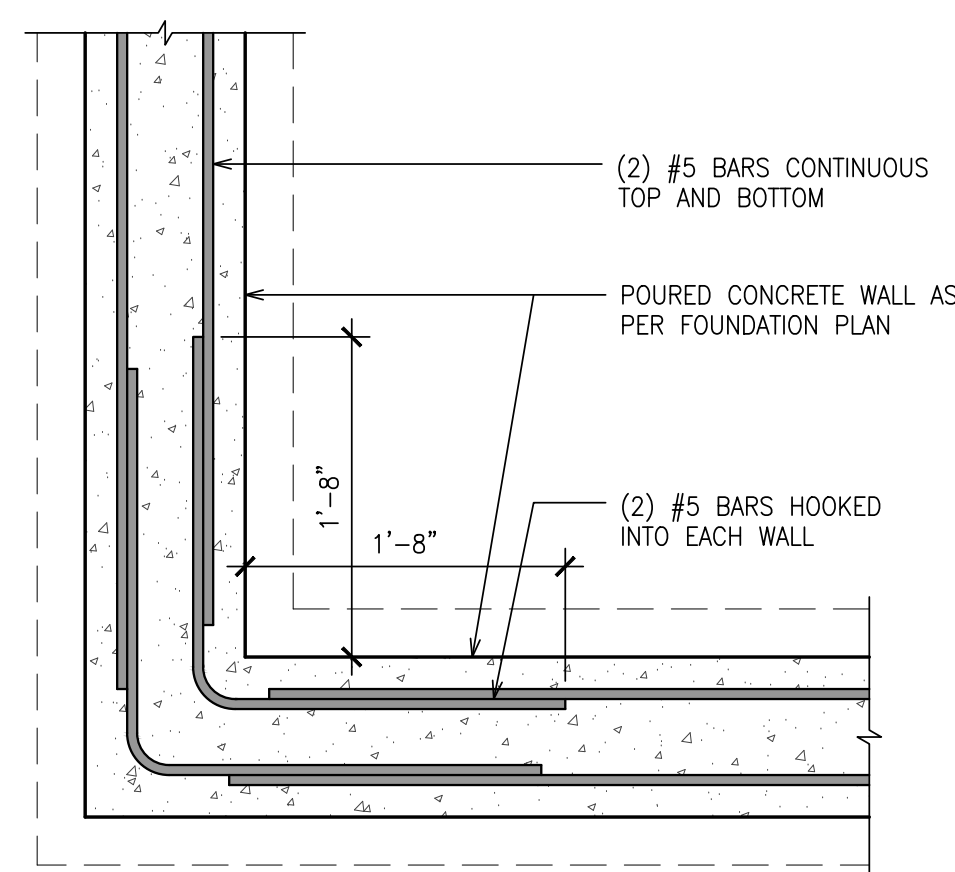
Exit Devices – Stanley Heavy Duty Exit Devices – QED100 Series

Door Closer – Stanley Heavy Duty Grade 1 Door Closers – QDC200 Series

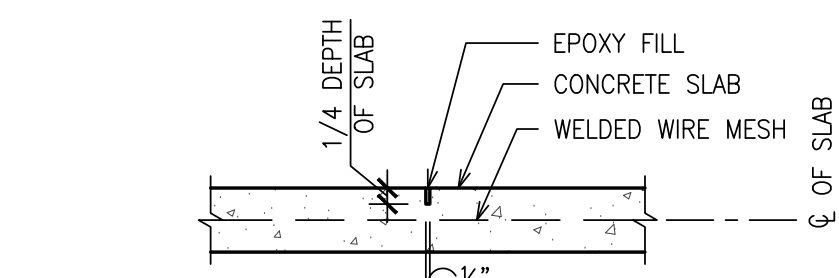


1 FOUNDATION PLAN
SCALE: 1/8" = 1'-0"

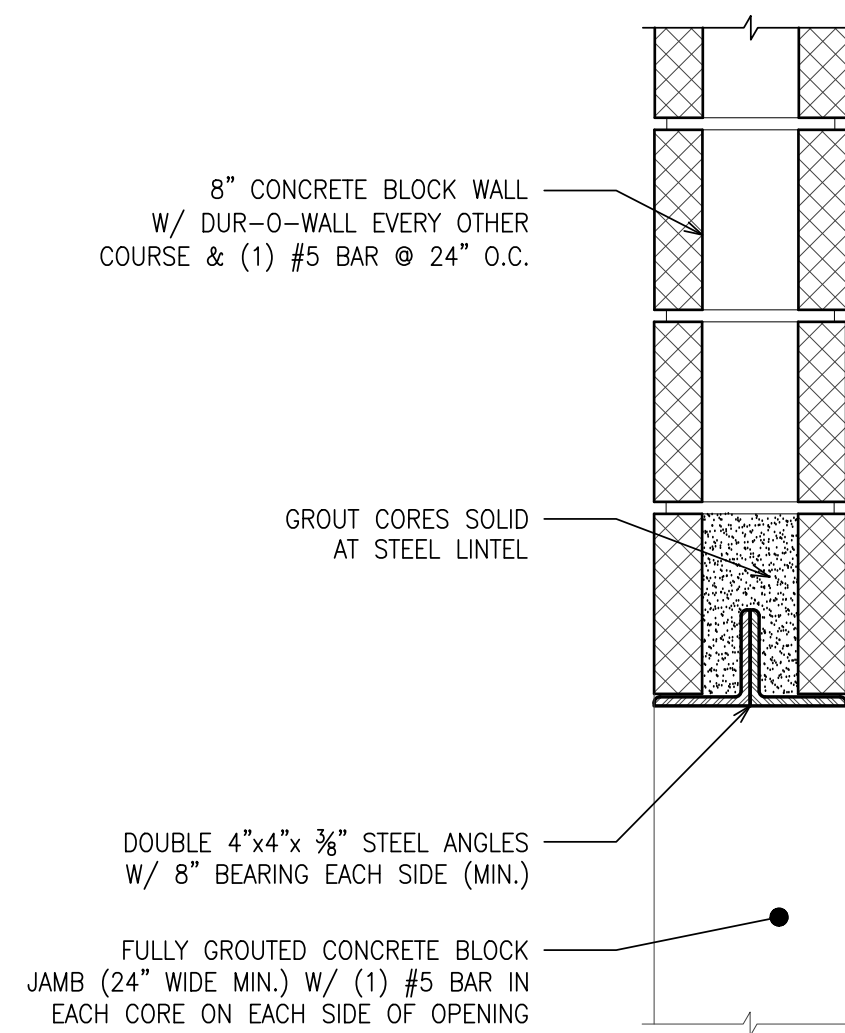
SEE SITE PLAN FOR EXTENT OF ADDITIONAL FREE STANDING GARDEN WALL



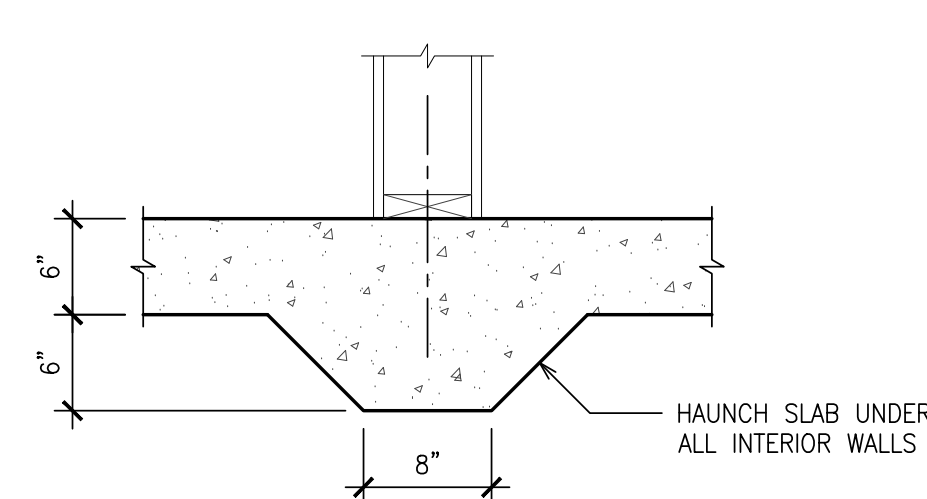
2 TYP. CORNER REINFORCING DETAIL
SCALE: 1" = 1'-0"



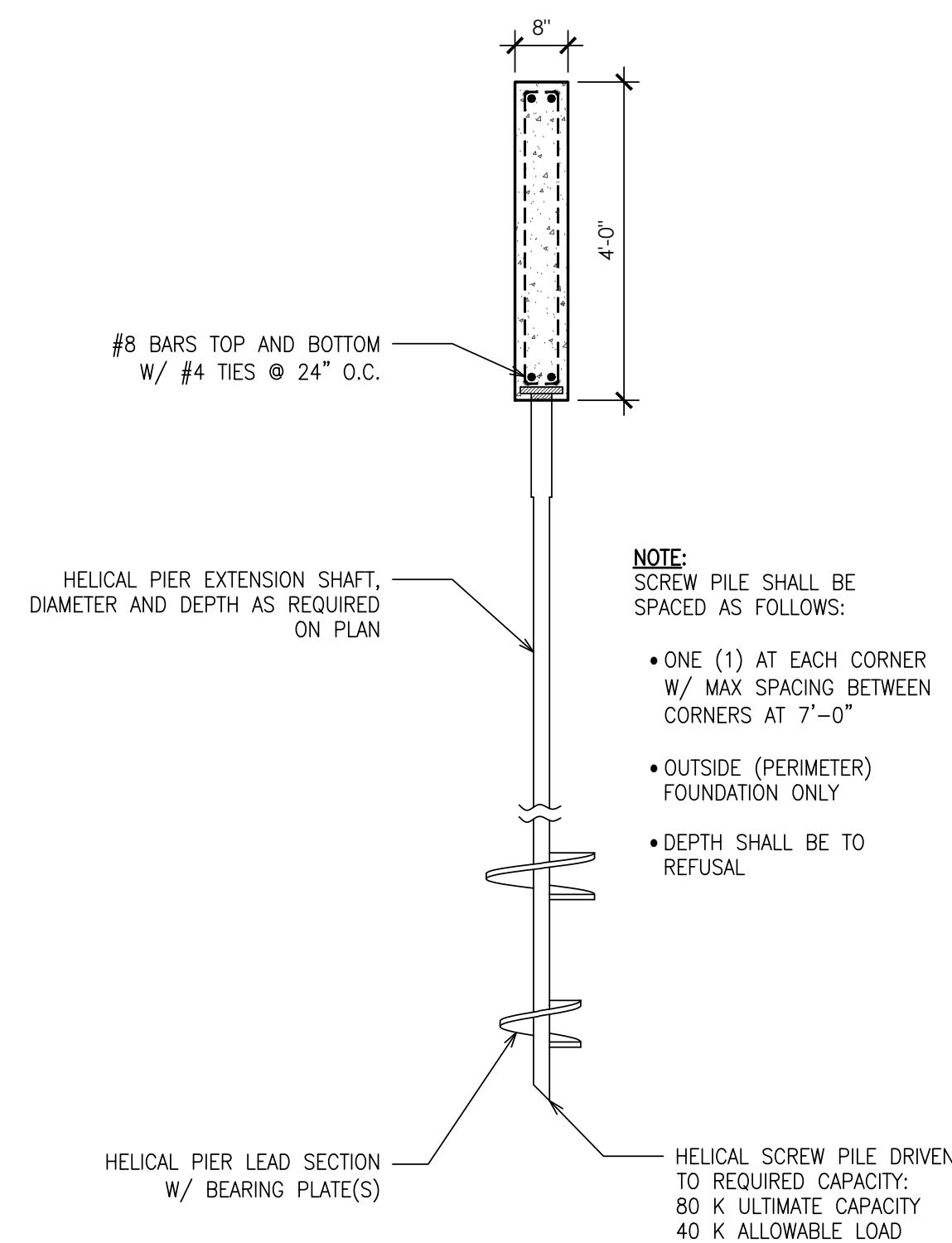
3 CONCRETE SLAB DETAILS
SCALE: 1" = 1'-0"



4 LINTEL DETAIL
SCALE: 1 1/2" = 1'-0"



5 SLAB DETAIL
SCALE: 1" = 1'-0"



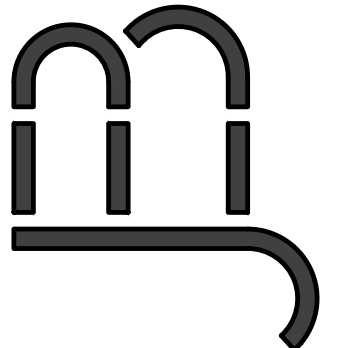
6 ALTERNATE FOUNDATION DETAIL
SCALE: 1/2" = 1'-0"

CONCRETE:

- 28 DAY MINIMUM COMPRESSIVE STRENGTH:
 - FOUNDATION WALLS - 3,000 PSI
 - SIDEWALKS, CURBS, STEPS, FLATWORK EXPOSED TO THE WEATHER - 4,500 PSI
 - INTERIOR SLABS ON GRADE - 4,000 PSI
- ALL CONCRETE SHALL BE NORMAL WEIGHT WITH NORMAL AIR DRY DENSITY OF 145 PCF
- CONCRETE ACCEPTANCE SHALL BE ON THE BASIS OF TRIAL MIXTURES AS DESCRIBED IN ACI 318-83, SECTION 4.3. PROVIDE TRIAL MIXTURES FOR THREE DIFFERENT WATER-CEMENT RATIOS INCLUDING 7-DAY AND 28 DAY COMPRESSIVE STRENGTH (FC), 1200 PSI GREATER THAN REQUIRED SHALL BE ACCEPTED.
- ADD WATER REDUCING ADMIXTURE TO MANUFACTURER'S RECOMMENDATIONS.
- ADD AIR ENTRAINING ADMIXTURE TO PRODUCE MAXIMUM AIR BY VOLUME OF:
 - 6% CLASS A CONCRETE USED IN FOUNDATION WALLS AND EXPOSED TO THE WEATHER.
 - 5% MAXIMUM FOR CLASS A CONCRETE ALL OTHER CONCRETE.
- MAXIMUM SLUMP SHALL BE:
 - 4" FOR CLASS A CONCRETE, USED IN FLOOR SLABS (6" ACCEPTABLE IF SUPERPLASTOIZER USED)
 - 4" FOR CLASS A CONCRETE, USED IN FOUNDATION WALLS
- ALL CONCRETE SHALL BE TRUCK MIXED.
- WALL FORM PANELS SHALL BE PLYWOOD, TEMPERED HARDBOARD OR CLEAN METAL FACES.
- CONCRETE PROTECTION FOR REINFORCING BARS.
 - FOUNDATION WALLS: 2" CLEAR
 - BOTTOM OF FOOTINGS: 3" CLEAR
 - SLAB ON GRADE: 1 1/2" COVER OVER WELDED WIRE FABRIC
- ALL PLACEMENT OF CONCRETE AND REINFORCEMENT, ACCORDING TO ACI 318-83 (INCLUDING ACI RECOMMENDATIONS FOR COLD WEATHER CONDITIONS) AND CRSI RECOMMENDED PRACTICES FOR PLACING REINFORCING BARS. PROVIDE FOR COLD WEATHER PROTECTIONS WHEN AIR TEMPERATURE IS BELOW 45° F BY MEANS OF HEATED SHELTER, HEATED AGGRATES, ETC. IN ACCORDANCE WITH ACI SPECIFICATIONS.
- FORM REMOVAL (MINIMUM TIME):
 - FIVE (5) DAYS FOR AIR TEMPERATURE BELOW 55° F AND ABOVE 40° F
 - THREE (3) DAYS FOR AIR TEMPERATURE ABOVE 55° F
- WHERE EXPOSED ABOVE GRADE, EITHER INTERIOR OR EXTERIOR, CONCRETE SHALL HAVE A SMOOTH FINISH AS OBTAINED BY THE USE OF SMOOTH PLYWOOD OR TEMPERED BOARD FORMS. GRIND OFF FINES, JOINTS MARKS, BULGES AND OTHER PROMINENT GRAN FILL MARKS AND GRIND OFF HONEYCOMBED OR DEPRESSED AREAS AND LEAVE SMOOTH AND WASHED CLEAN.
- STEEL REINFORCING BARS SHALL BE NEW ASTM A615-79, GRADE 60
- STEEL WELDED WIRE FABRIC SHALL BE NEW ASTM A 185-79. FINISH IN FLAT SHEETS. LAP 1 1/2 SQUARES IN ALL DIRECTIONS AT JOINTS.
- IN GENERAL EXTERIOR CONSTRUCTION SHALL BE CARRIED DOWN NOT LESS THAN 4 FEET BELOW FINISHED EXTERIOR GRADE.
- NO FOOTINGS ARE TO BE PLACED ON WATER OR FROZEN GROUND. ALL FOOTING EXCAVATIONS ARE TO BE FINISHED BY HAND.
- BACKFILL AGAINST FOUNDATION WALLS BELOW GRADE SO THAT DIFFERENCE INFILL LEVEL ON OPPOSITE SHOES DOES NOT EXCEED 1'-0" AT ANY TIME.

Proposed Union Road Car Wash
West Seneca, New York

JAMES E. BOY
ARCHITECTS, PC
124 LINDEEN AVE.
KENMORE, NY 14217
PHONE: (716) 863-1380

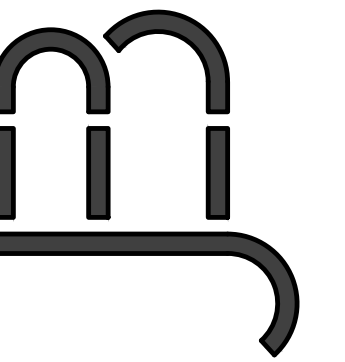


PROJECT TITLE: UNION ROAD CAR WASH
PROJECT NO: 19-001
DRAWN BY: es
CHECKED BY: JEB
START DATE: 1-21-19

NO.	DATE	DESCRIPTION
1	02-17-2020	REVISED BID SET
2	02-17-2020	NEW DESIGN
3	12-09-2020	
4		
5		
6		
7		

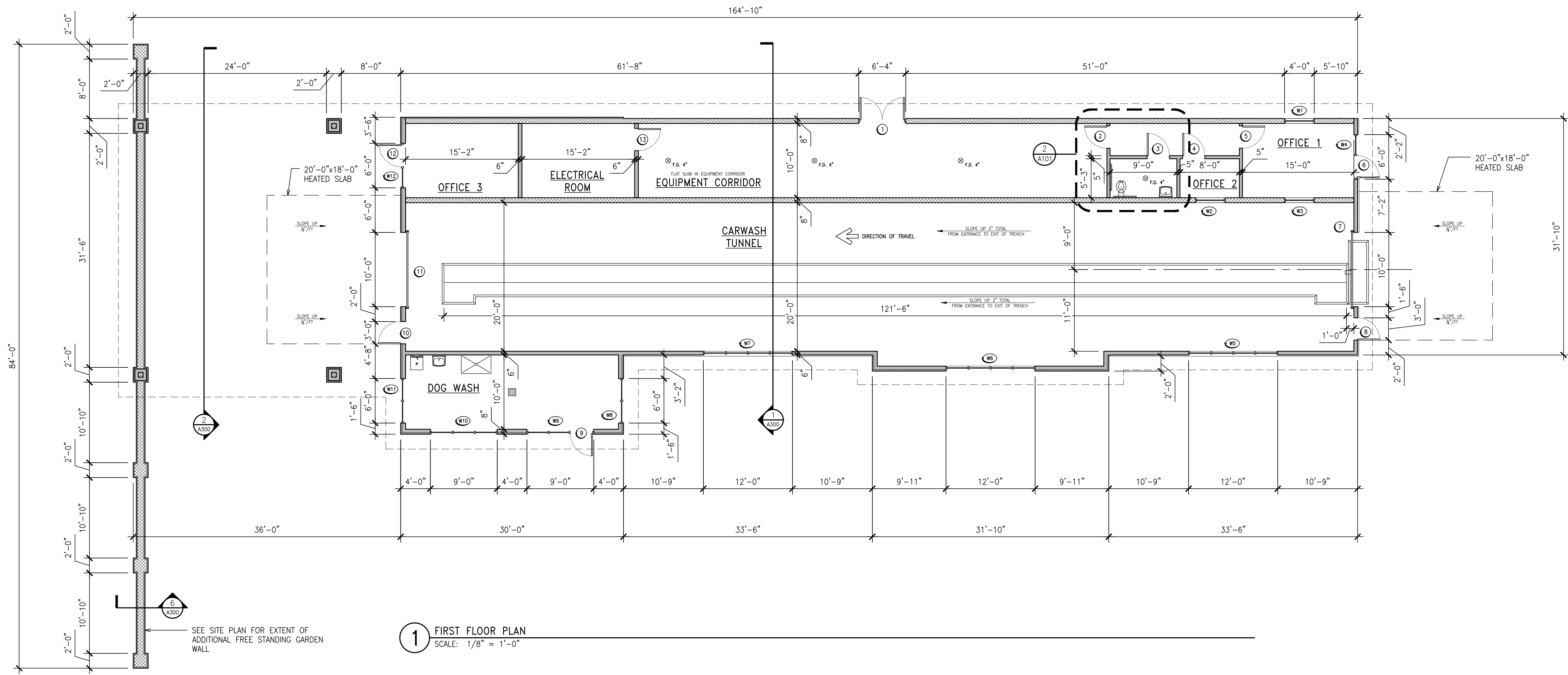
SEAL: _____

DRAWING NUMBER:
A100

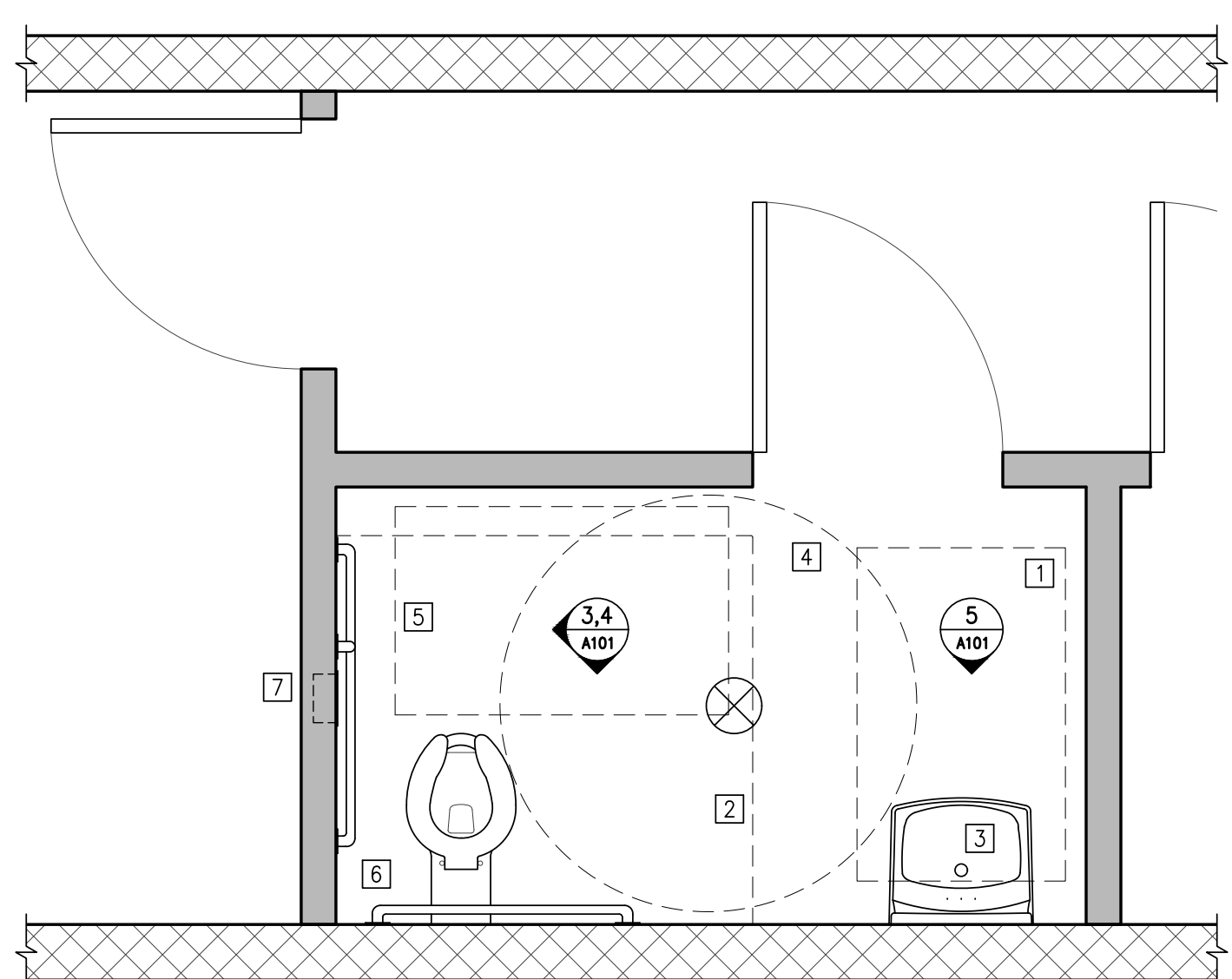


NO.	DATE	DESCRIPTION
1	02-2020	REVISED BID SET
2	03-17-2020	NEW DESIGN
3	12-09-2020	---
4	---	---
5	---	---
6	---	---
7	---	---

ALL DRAWINGS AND WRITTEN MATERIAL ARE THE PROPERTY OF JAMES E. BOY ARCHITECTS, PC. NO PART OF THIS DOCUMENT SHALL BE REPRODUCED OR TRANSMITTED IN ANY FORM OR BY ANY MEANS, ELECTRONIC OR MECHANICAL, WITHOUT THE WRITTEN PERMISSION OF JAMES E. BOY ARCHITECTS, PC. ANY UNAUTHORIZED USE OF THIS DOCUMENT IS PROHIBITED AND WILL BE PROSECUTED TO THE FULL EXTENT OF THE LAW.

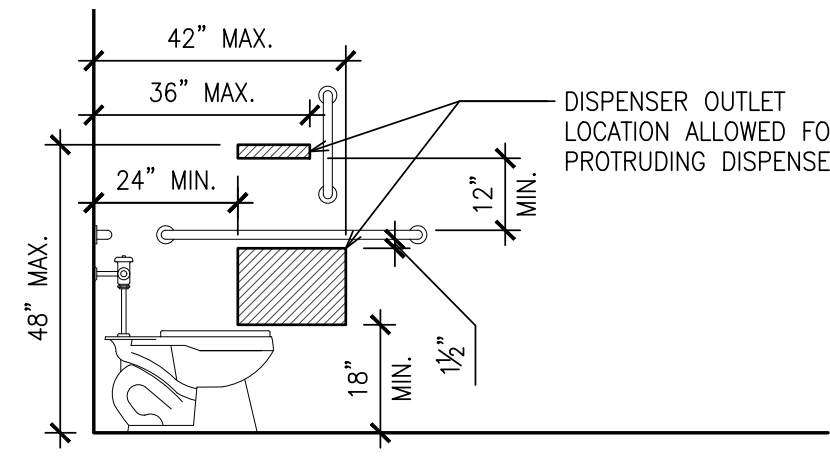


1 FIRST FLOOR PLAN
SCALE: 1/8" = 1'-0"

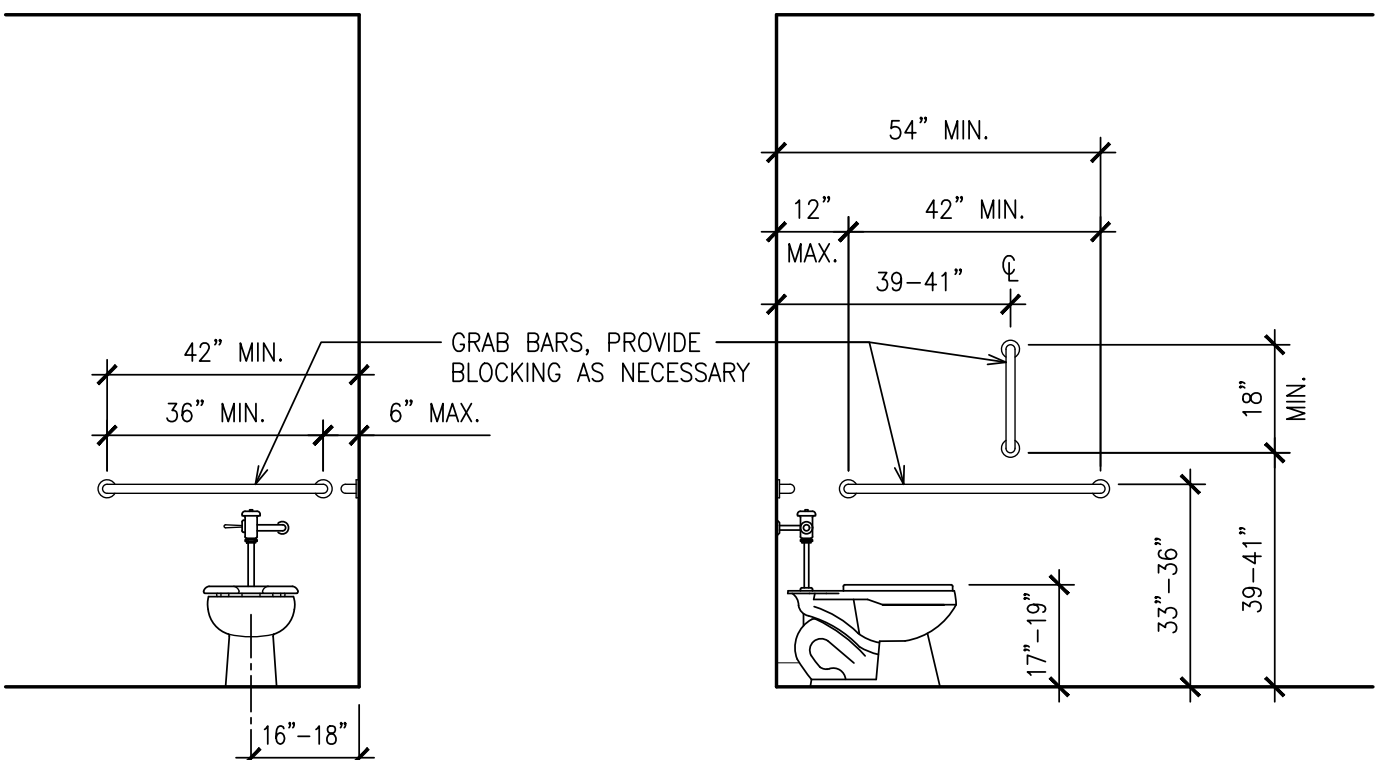


2 ENLARGED TOILET PLAN
SCALE: 1/2" = 1'-0"

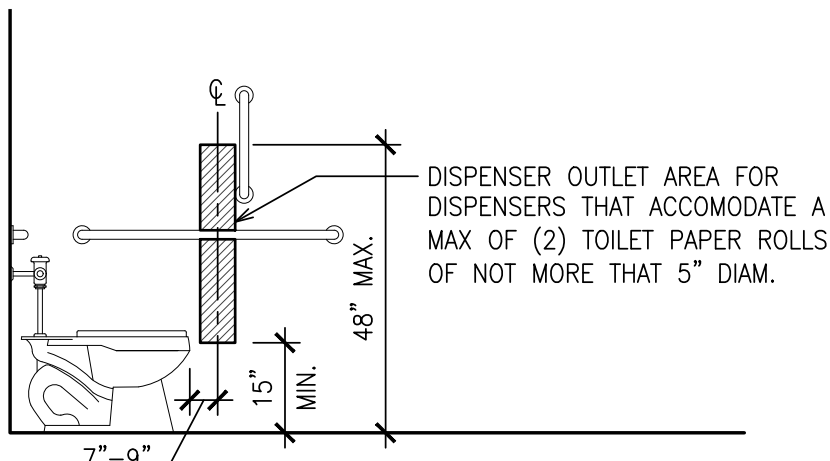
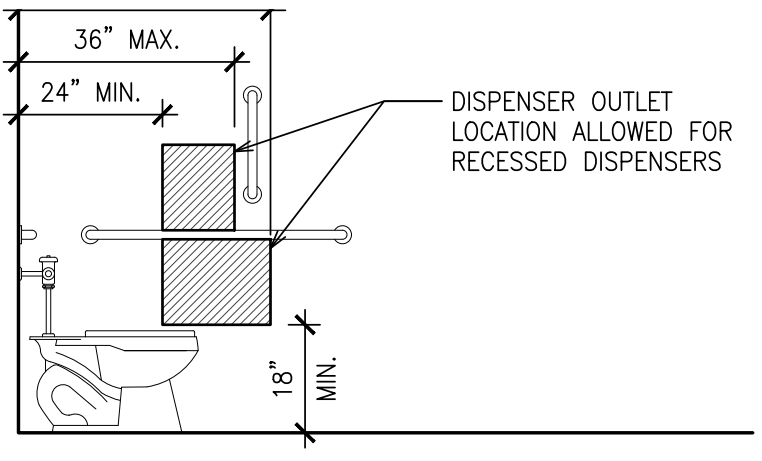
- ACCESSIBILITY KEY**
1. A 30"x48" CLEAR SPACE SHALL BE PROVIDED AT LAVATORY SINK. SEE DETAIL 5/A101 FOR ADDITIONAL CLEARANCES AT LAVATORY SINK.
 2. A 60"x56" CLEAR FLOOR SPACE SHALL BE PROVIDED AT TOILET. SEE DETAIL 3/A101 FOR ADDITIONAL CLEARANCES AT TOILET.
 3. WATER SUPPLY AND DRAIN PIPES SHALL BE INSULATED TO PROTECT AGAINST CONTACT.
 4. 60" DIAMETER TURNING SPACE SHALL BE PROVIDED. THE TURNING SPACE SHALL BE PERMITTED TO INCLUDE KNEE AND TOE CLEARANCE.
 5. A 48"x30" CLEAR FLOOR SPACE SHALL BE PROVIDED WHEN DOOR SWING OVERLAPS FIXTURE CLEARANCES OR CLEAR FLOOR SPACES AND IS FOR A SINGLE OCCUPANT.
 6. 42" MIN. SIDE WALL GRAB BAR AND 36" MIN. REAR WALL GRAB BAR REQUIRED, SEE 4/A101 FOR ADDITIONAL REQUIREMENTS.
 7. SIDE WALL DISPENSER AT TOILETS, SEE 3/A101 FOR REQUIREMENTS.



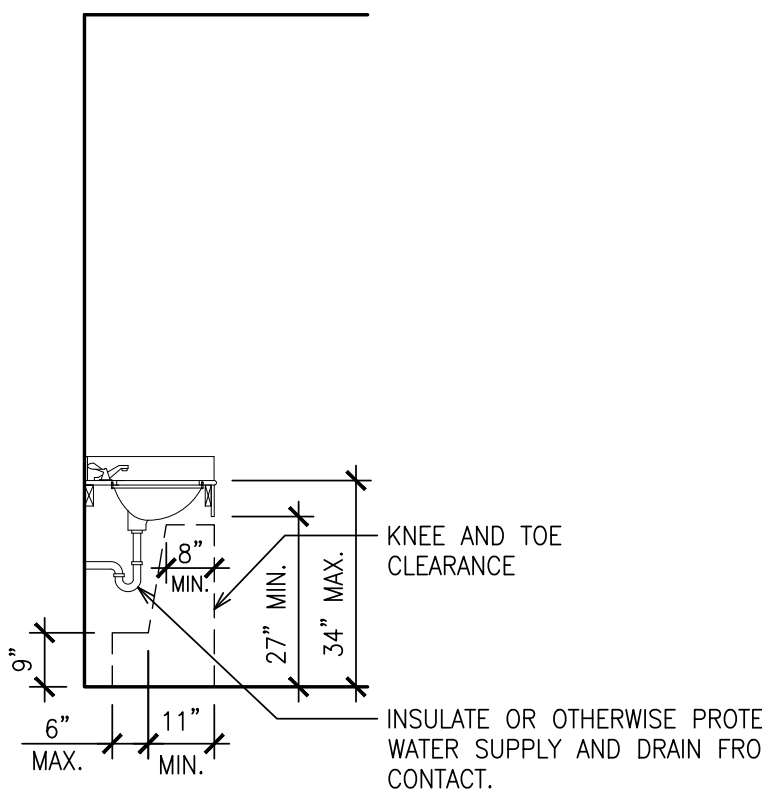
3 DISPENSER LOCATIONS PER DISPENSER TYPE
SCALE: 3/8" = 1'-0"

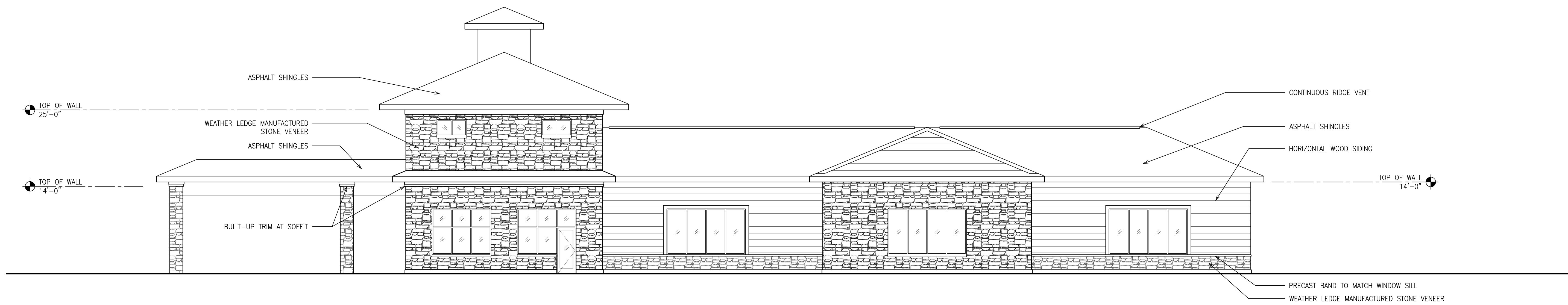


4 GRAB BARS AND TOILET REQUIREMENTS
SCALE: 3/8" = 1'-0"

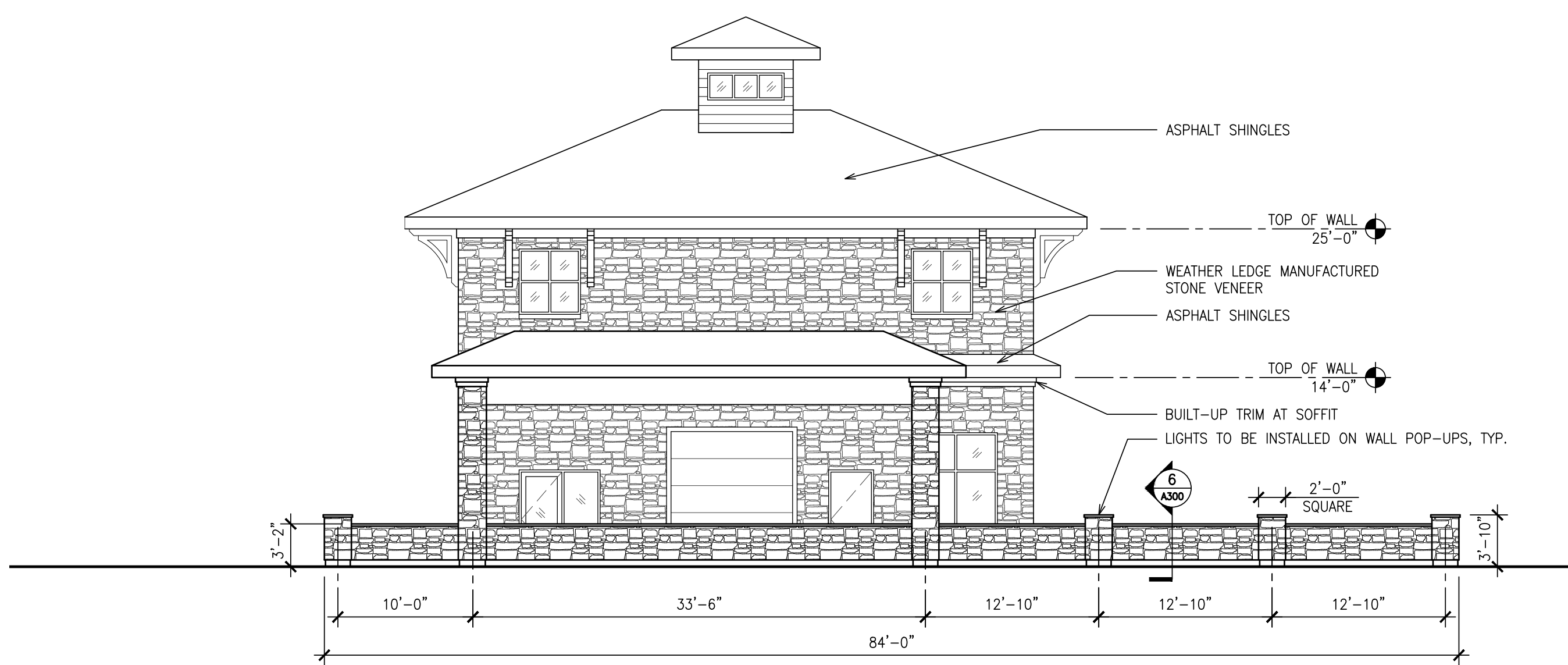


5 VANITY REQUIREMENTS
SCALE: 3/8" = 1'-0"

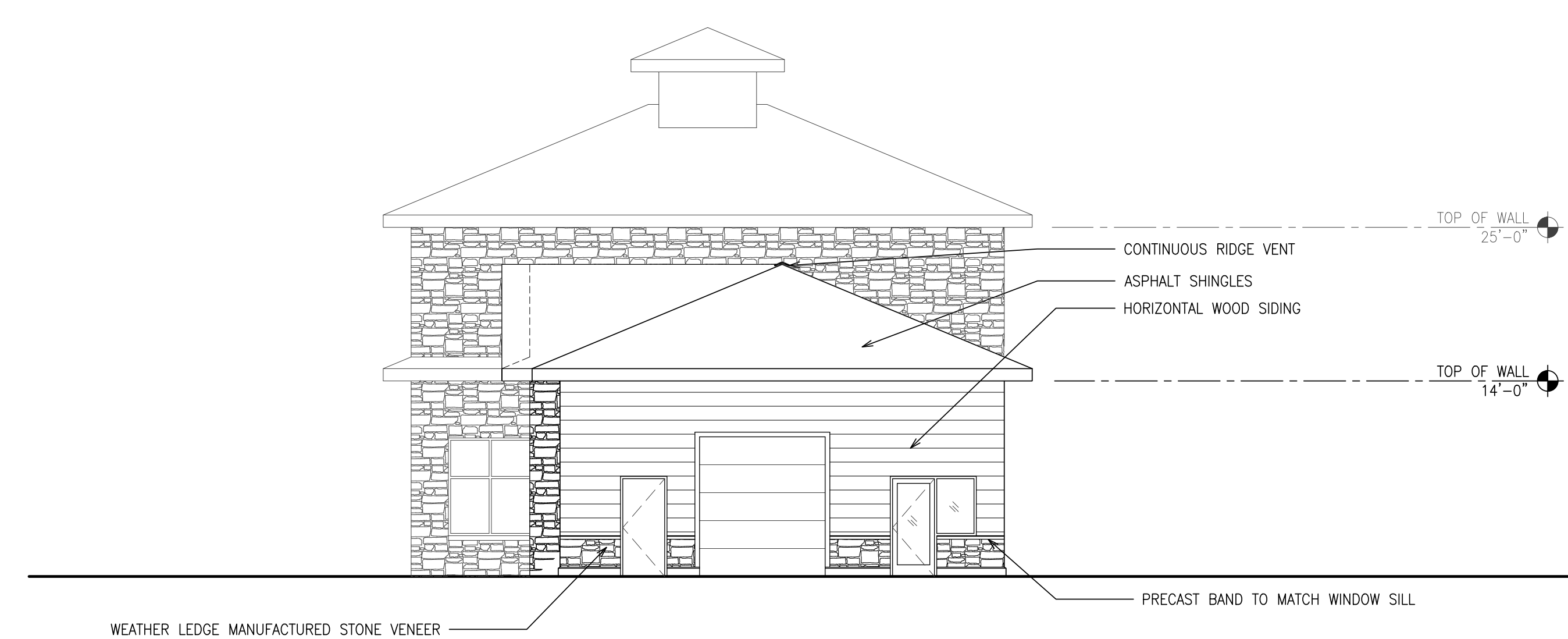




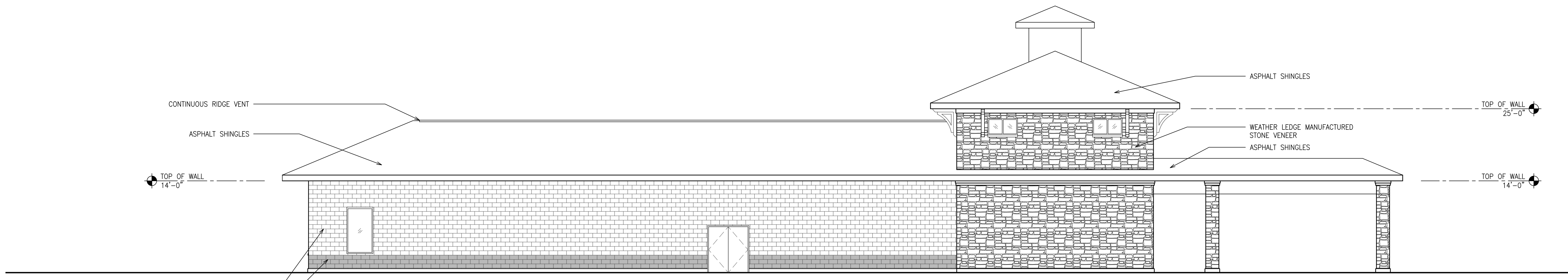
1 EXTERIOR ELEVATION
SCALE: 1/8" = 1'-0"



2 EXTERIOR ELEVATION
SCALE: 1/8" = 1'-0"



3 EXTERIOR ELEVATION
SCALE: 1/8" = 1'-0"

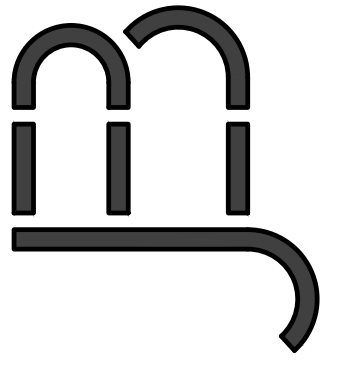


1 EXTERIOR ELEVATION
SCALE: 1/8" = 1'-0"

NOTE: MATERIALS - SEE OUTLINE MATERIAL SPECIFICATION

Proposed Union Road Car Wash
West Seneca, New York

JAMES E. BOY
ARCHITECTS, PC
124 LINDBEN AVE.
KENMORE, NY 14217
PHONE: (716) 863-1380



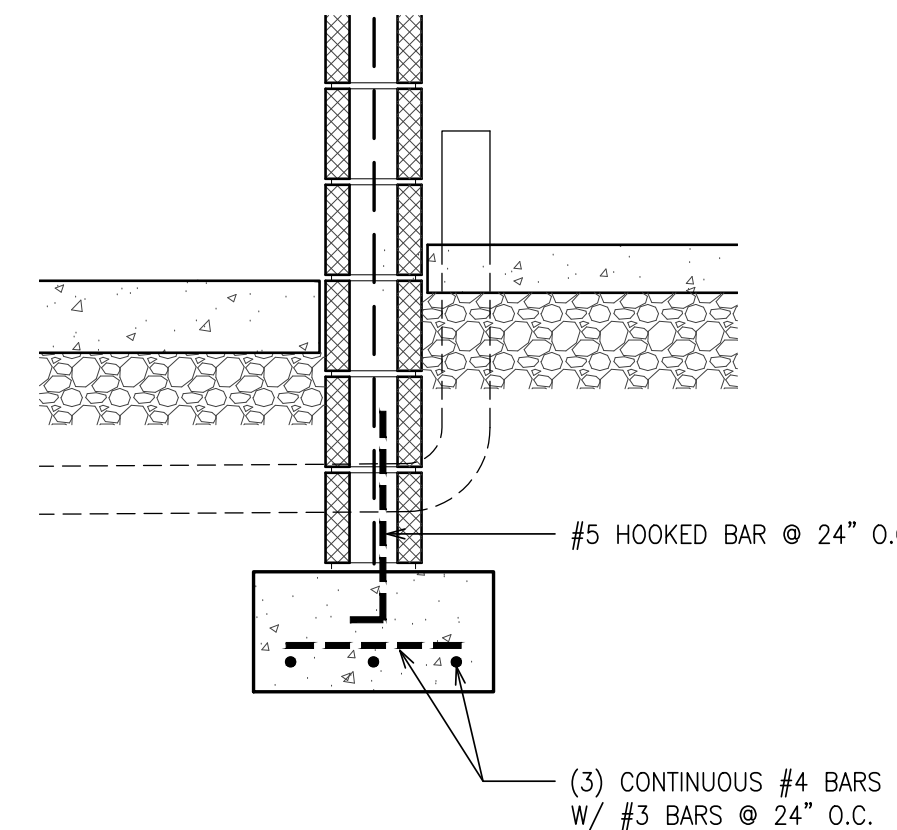
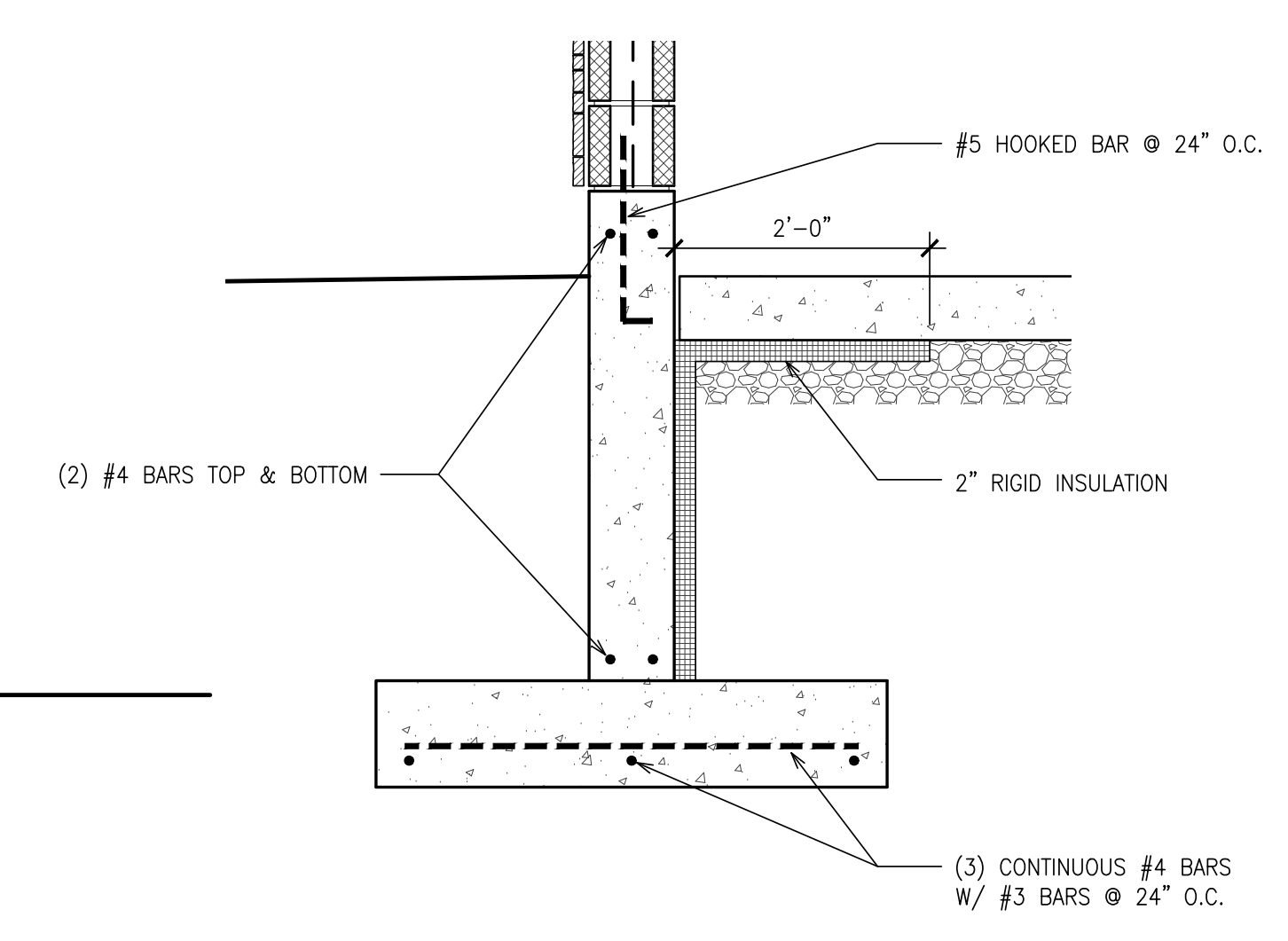
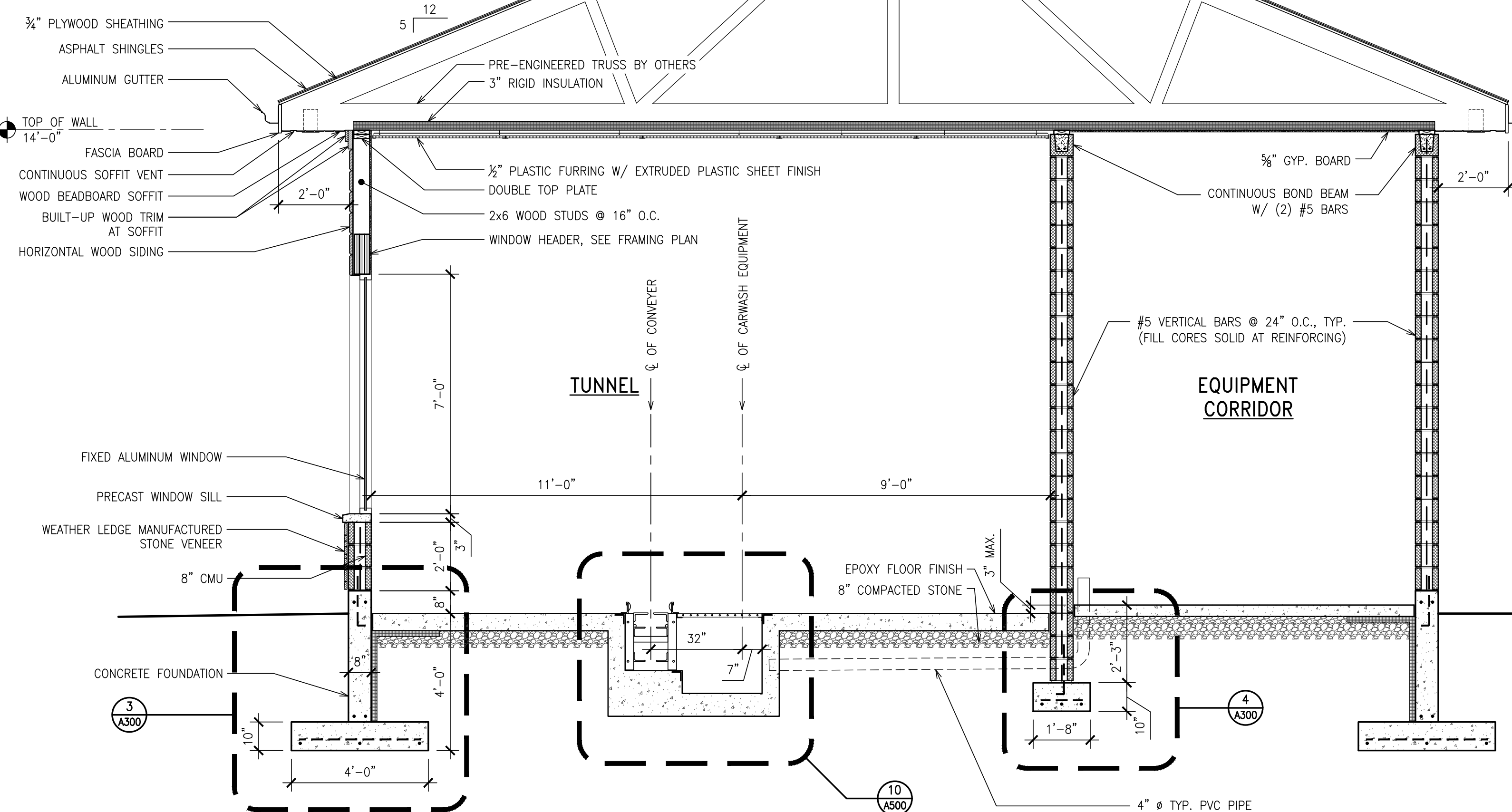
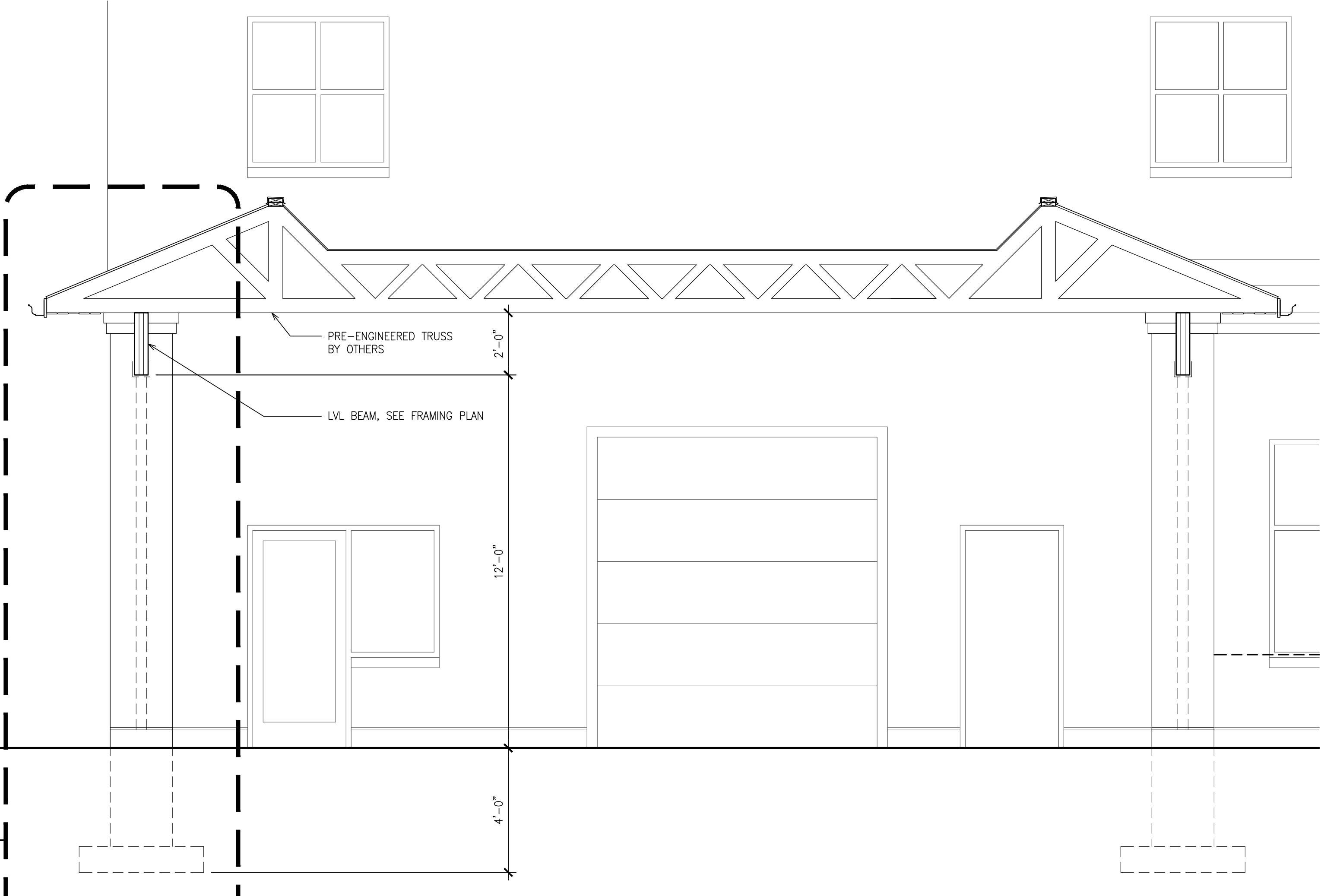
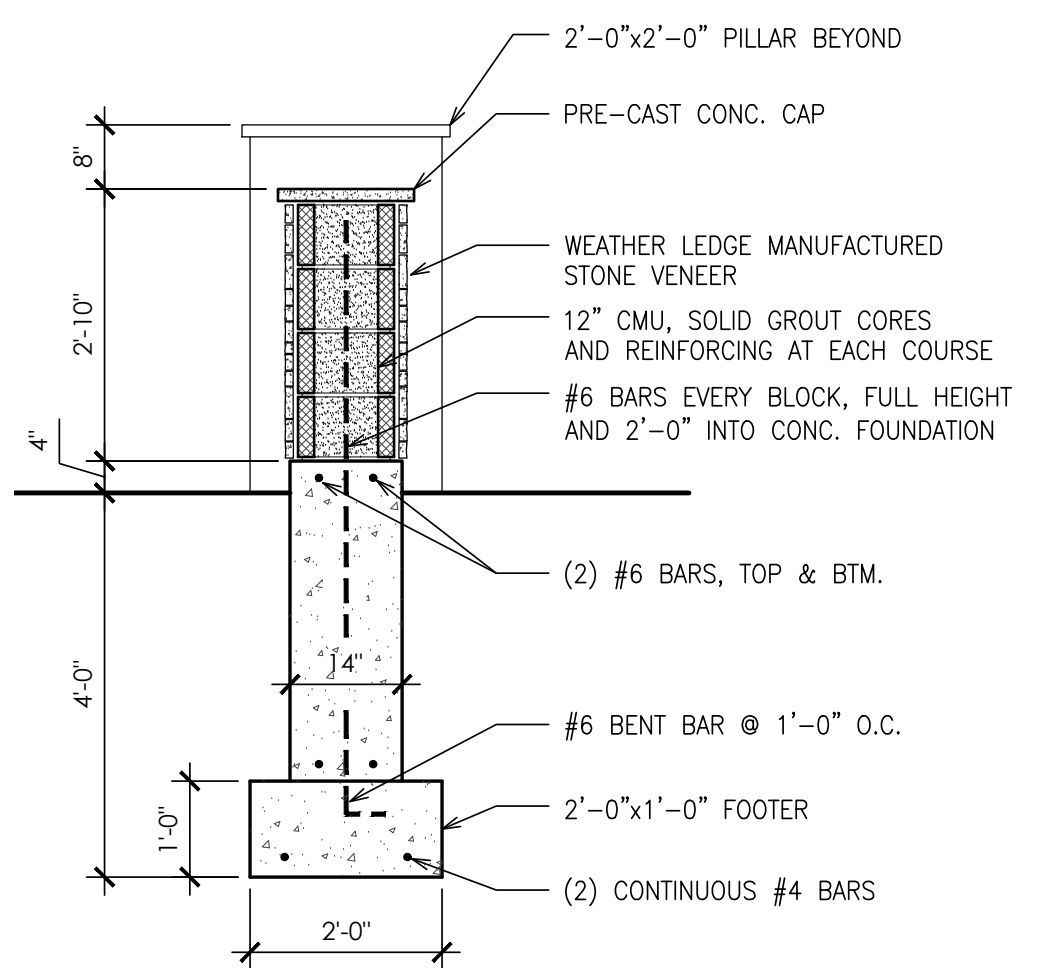
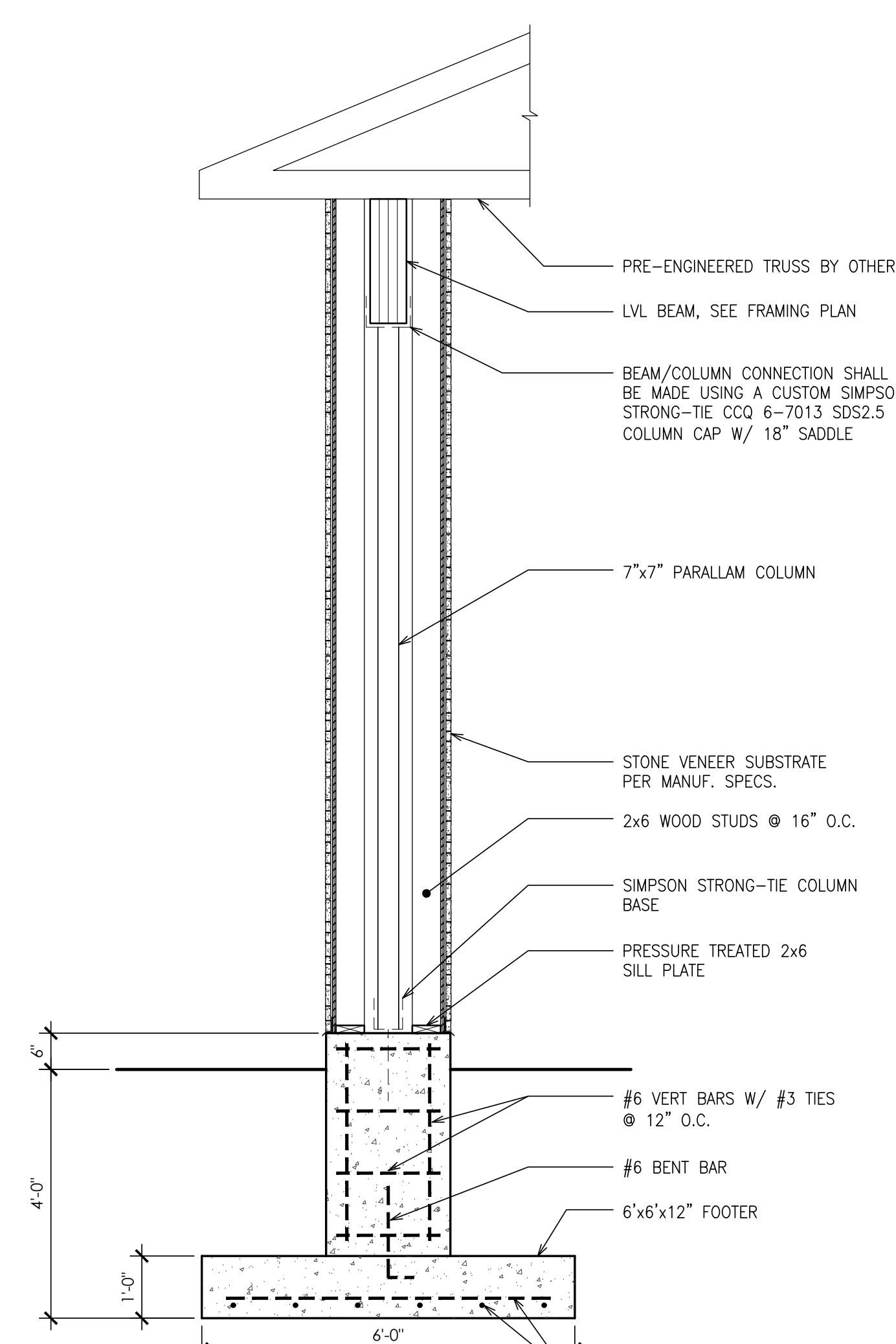
PROJECT TITLE: UNION ROAD CAR WASH
PROJECT NO: 19-001
DRAWN BY: es
CHECKED BY: JEB
START DATE: 1-21-19

NO.	DATE	DESCRIPTION
1	01-17-2020	REVISED BID SET
2	02-17-2020	NEW DESIGN
3	12-09-2020	
4		
5		
6		
7		

SEAL:

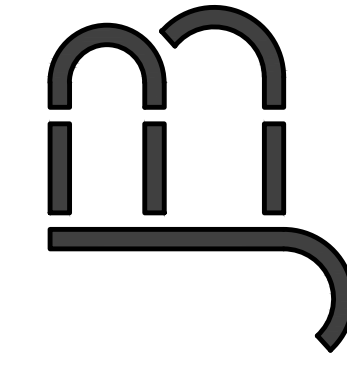
DRAWING NUMBER:
A200

ALL DRAWINGS AND WRITTEN MATERIAL HEREBY CONSTITUTE THE ORIGINAL DESIGN AND CONSTRUCTION DOCUMENTS. NO PART OF THIS DOCUMENT SHALL BE REPRODUCED OR TRANSMITTED IN ANY FORM OR BY ANY MEANS, ELECTRONIC OR MECHANICAL, INCLUDING PHOTOCOPYING, RECORDING, OR BY ANY INFORMATION STORAGE AND RETRIEVAL SYSTEM, WITHOUT THE WRITTEN PERMISSION OF THE ARCHITECT. CONTRACTOR SHALL VERIFY CORRECT DIMENSIONS WITH THE ARCHITECT. CONTRACTOR SHALL CHECK AND VERIFY ALL DIMENSIONS AND CONDITIONS AT THE SITE.



Proposed Union Road Car Wash
West Seneca, New York

JAMES. E. BOY
ARCHITECTS, PC
124 LINCOLN AVE.
KENMORE, NY 14217
PHONE: (716) 863-1380



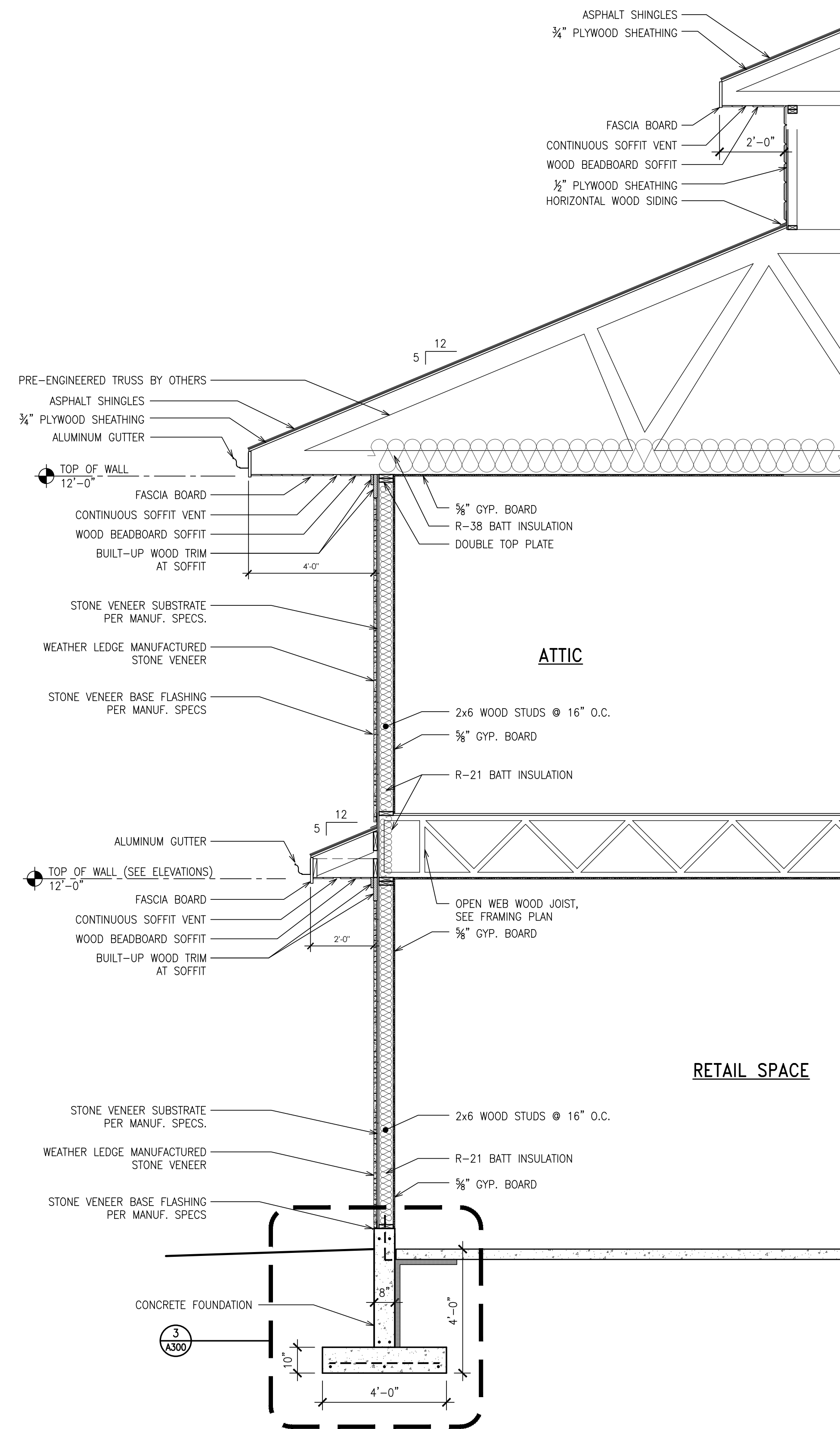
PROJECT TITLE: UNION ROAD CAR WASH
PROJECT NO: 19-001
DRAWN BY: es
CHECKED BY: JEB
START DATE: 1-21-19

NO.	DATE	DESCRIPTION
1	02-17-2020	REVISED BID SET
2	02-17-2020	NEW DESIGN
3	12-09-2020	
4		
5		
6		
7		

SEAL:

DRAWING NUMBER:
A300

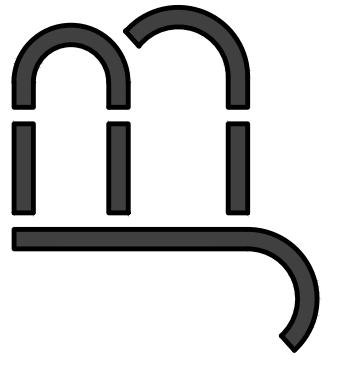
NOTE: MATERIALS - SEE OUTLINE MATERIAL SPECIFICATION



1 WALL SECTION
 SCALE: 3/8" = 1'-0"

Proposed Union Road Car Wash
 West Seneca, New York

JAMES. E. BOY
 ARCHITECTS, PC
 124 LINDBEN AVE.
 KENMORE, NY 14217
 PHONE: (716) 863-1380



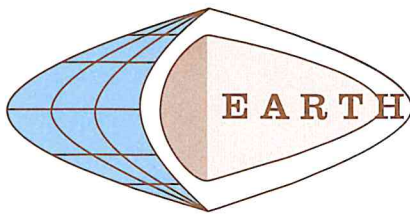
PROJECT TITLE: UNION ROAD CAR WASH
 PROJECT NO: 19-001
 DRAWN BY: es
 CHECKED BY: JEB
 START DATE: 1-21-19

NO.	DATE	DESCRIPTION
1	02-17-2020	REVISED BID SET
2	03-17-2020	NEW DESIGN
3	12-09-2020	
4		
5		
6		
7		

ALL DRAWINGS AND WRITTEN MATERIAL HEREBY CONSTITUTE ORIGINAL WORK AND SHALL BE THE PROPERTY OF JAMES E. BOY ARCHITECTS, PC. NO USE OF ANY OF THE ABOVE WITHOUT WRITTEN CONSENT OF THE ARCHITECT. VERIFY CORRECT DIMENSIONS WITH THE ARCHITECT. CONTRACTOR SHALL CHECK AND VERIFY ALL DIMENSIONS AND CONDITIONS AT THE SITE.

SEAL:

DRAWING NUMBER:
 A301



EARTH DIMENSIONS, INC.

Soil and Hydrogeologic Investigations • Wetland Delineations

1091 Jamison Road • Elma, NY 14059

(716) 655-1717 • FAX (716) 655-2915

6D19

HOLE NO. B-1-19

SURF. ELEVATION

PROJECT 1343, 1347, 1353 Union Road & O Fremont Avenue

LOCATION

Town of West Seneca, Erie County, NY

CLIENT James E. Boy Architects, PC

DATE STARTED 05/03/19 COMPLETED 05/03/19

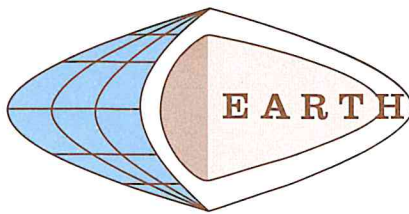
DEPTH IN FT BLOWS ON SAMPLER

SN	0/6	6/12	12/18	18/24	N	LITH	DESCRIPTION AND CLASSIFICATION	WATER TABLE AND REMARKS
REC								
1	6						Asphalt pavement. 0.3	Sample number 1 is from 0.5 to 2.0 feet.
8		3					Moist gray gravelly (SILTY-SAND) fill with 20 to 50% gravel, trace silt, compact, massive soil structure, (SW). 0.5	Asphalt pavement to 0.3 feet over sandy soil fill with little to some gravel, trace silt to 0.5 feet over sandy soil fill with trace to little gravel, trace silt to 1.6 feet over clayey slack water sediment with trace sand and gravel to 4.0 feet over clayey lake sediment with trace sand to 24.7 feet over clayey glacial drift with trace to little sand and gravel to 26.0 feet over coarse silty glacial till with little to some sand, trace to little gravel to 33.0 feet over water sorted and deposited sand with trace to little silt to 38.0 feet over sand and gravel glacial till with trace to little silt to auger refusal.
2	4		3		8		Moist gray (SAND) fill with 5 to 15% gravel, trace silt, loose, massive soil structure, (SW). 1.6	
5		4					Moist faintly mottled light brown (SILTY-CLAY) with 3 to 7% gravel, trace sand, stiff, blocky soil structure, (CL). grades downward to 4.0	
3	3						Moist faintly mottled brownish gray to light brown (SILTY-CLAY) with trace sand, firm, weakly thinly laminated with very thin coarse silt lenses, (CL). grades downward to 8.6	
5	18	3			8		Extremely moist gray (SILTY-CLAY) with trace sand, soft to firm, very soft below 10.0 feet, thinly laminated with very thin coarse silt lenses, (CL).	Note: Advanced bore hole with 2 1/4" ID x 6" OD hollow stem auger casing with continuous split spoon sampling to 16.0 feet and 5.0-foot interval sampling to auger refusal at 41.1 feet. Bore hole was backfilled with cuttings to ground surface upon completion.
4	3							
14		4			9			
5	3				5			
13		2			5			
10			3		2			
6	1				2			
24		1			2			
7	1				<2			
24			1/12		<2			
8	WH				<1			
24		WH			<1			
15			WH		<1			
				WH	<1			
9	WH				<1			
24		WH			<1			
20			WH		<1			
				1	<1			

N=NUMBER OF BLOWS TO DRIVE 2 " SPOON 12 " WITH 140 lb. WT. FALLING 30 " PER BLOW

LOGGED BY Jason Kryszak, Geologist, (cns)

SHEET 1 OF 3



EARTH DIMENSIONS, INC.

Soil and Hydrogeologic Investigations • Wetland Delineations

1091 Jamison Road • Elma, NY 14059

(716) 655-1717 • FAX (716) 655-2915

6D19

HOLE NO. B-1-19

SURF. ELEVATION

PROJECT 1343, 1347, 1353 Union Road & O Fremont Avenue

LOCATION

Town of West Seneca, Erie County, NY

CLIENT James E. Boy Architects, PC

DATE STARTED 05/03/19

COMPLETED 05/03/19

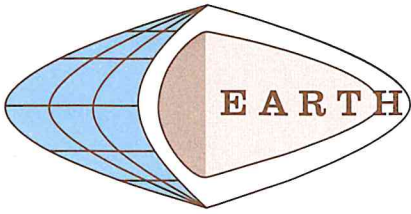
DEPTH IN FT BLOWS ON SAMPLER

SN	0/6	6/12	12/18	18/24	N	LITH	DESCRIPTION AND CLASSIFICATION	WATER TABLE AND REMARKS
REC								
							Extremely moist gray (SILTY-CLAY) with trace sand, soft to firm, very soft below 10.0 feet, thinly laminated with very thin coarse silt lenses, (CL).	WH: Sampler penetration with weight of rods and hammer.
							grades downward to 24.7	
10	WH				2			
24		1						
			1					
				2				
							Extremely moist gray (SAND-SILT-CLAY) with 5 to 15% gravel, some clay, trace to little sand, soft, massive soil structure, (ML-CL).	
							grades downward to 26.0	
							Moist gray (SANDY-SILT) with trace to little silt, compact, stratified, (SM) tending toward (SW).	
11	12				39			
9		18						
			21					
				20				
							grades downward to 33.0	
12	13				27		Wet gray (SILTY-SAND) with trace to little silt, compact, stratified, (SM) tending toward (SW).	▼ Water level at 33.0 feet below ground surface at completion.
5		13						
			14					
				18				
							grades downward to 38.0	
13	18				49		Moist gray very gravelly (SILTY-SAND) with 40 to 60% gravel, trace to little silt, dense, massive soil structure, (SM), (GM).	
6		21						
			28					
				21				

N=NUMBER OF BLOWS TO DRIVE 2 " SPOON 12 " WITH 140 lb. WT. FALLING 30 " PER BLOW

LOGGED BY Jason Kryszak, Geologist. (cns)

SHEET 2 OF 3



EARTH DIMENSIONS, INC.

Soil and Hydrogeologic Investigations • Wetland Delineations

1091 Jamison Road • Elma, NY 14059

(716) 655-1717 • FAX (716) 655-2915

8D19

HOLE NO. B-1-19

SURF. ELEVATION

PROJECT 1343, 1347, 1353 Union Road & O Fremont Avenue

LOCATION

Town of West Seneca, Erie County, NY

CLIENT James E. Boy Architects, PC

DATE STARTED 05/03/19

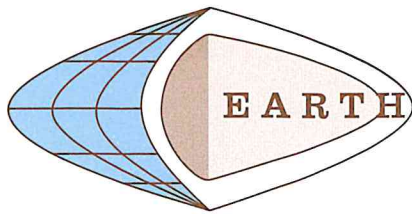
COMPLETED 05/03/19

DEPTH BLOWS ON
IN FT SAMPLER

SN	0/ 6	6/ 12	12/ 18	18/ 24	N	LITH	DESCRIPTION AND CLASSIFICATION	WATER TABLE AND REMARKS
REC								
							Moist gray very gravelly (SILTY-SAND) with 40 to 60% gravel, trace to little silt, dense, massive soil structure, (SM), (GM).	
							41.1	
							Advanced augers to refusal at 41.1 feet.	
45								
50								
55								
60								

N=NUMBER OF BLOWS TO DRIVE 2 " SPOON 12 " WITH 140 lb. WT. FALLING 30 " PER BLOW

LOGGED BY Jason Kryszak, Geologist, (cns)



EARTH DIMENSIONS, INC.

Soil and Hydrogeologic Investigations • Wetland Delineations

1091 Jamison Road • Elma, NY 14059

(716) 655-1717 • FAX (716) 655-2915

6D19

HOLE NO. B-2-19

SURF. ELEVATION

PROJECT 1343, 1347, 1353 Union Road & O Fremont Avenue

LOCATION

Town of West Seneca, Erie County, NY

CLIENT James E. Boy Architects, PC

DATE STARTED 05/03/19

COMPLETED 05/03/19

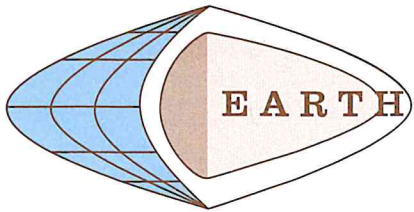
DEPTH IN FT BLOWS ON SAMPLER

SN	0/6	6/12	12/18	18/24	N	LITH	DESCRIPTION AND CLASSIFICATION	WATER TABLE AND REMARKS
<u>REC</u>								
1	1						Extremely moist gray to dark gray (SANDY-SILT) fill with 3 to 7% gravel, little sand, trace brick fragments, very loose, massive soil structure, (ML).	Coarse silty soil fill with little sand, trace gravel and brick fragments to 2.0 feet over clayey slack water sediment with trace sand to 8.0 feet over clayey lake sediment with trace sand to 19.0 feet over clayey glacial drift with trace to little sand and gravel to 22.5 feet over coarse silty glacial till with little sand and gravel to end of boring.
14		1			3			
			2				Moist faintly mottled light brown (SILTY-CLAY) with trace sand, firm, weakly thinly laminated with very thin coarse silt lenses and nearly vertical gray desiccation cracks, (CL).	Note: Advanced bore hole with 2 1/4" ID x 6" OD hollow stem auger casing with continuous split spoon sampling to 16.0 feet and 5.0-foot interval sampling to end of boring at 26.0 feet. Bore hole was backfilled with cuttings to ground surface upon completion. No water at completion.
2	2				4			
12		1			5			
			3				grades downward to 8.0	
3	3				5			
21		2			7			
			3		5			
				3			grades downward to 19.0	
4	3				5			
20		3			5			
			4		5			
				5	5			
							See next sheet	
5	2				5			
21		3			5			
			2					
6	2				5			
24		3			5			
			2		5			
				3				
7	3				4			
22		2			4			
			2					
8	3				5			
24		3			5			
			2					
				3				
9	3				5			
18		2			5			

N=NUMBER OF BLOWS TO DRIVE 2 " SPOON 12 " WITH 140 lb. WT. FALLING 30 " PER BLOW

LOGGED BY Jason Kryszak, Geologist, (cns)

SHEET 1 OF 2



EARTH DIMENSIONS, INC.

Soil and Hydrogeologic Investigations • Wetland Delineations

1091 Jamison Road • Elma, NY 14059

(716) 655-1717 • FAX (716) 655-2915

6D19

HOLE NO. B-2-19

SURF. ELEVATION

PROJECT 1343, 1347, 1353 Union Road & O Fremont Avenue

LOCATION

Town of West Seneca, Erie County, NY

CLIENT James E. Boy Architects, PC

DATE STARTED 05/03/19

COMPLETED 05/03/19

DEPTH BLOWS ON
IN FT SAMPLER

SN	0/ 6	6/ 12	12/ 18	18/ 24	N	LITH	DESCRIPTION AND CLASSIFICATION	WATER TABLE AND REMARKS
REC								
			3					
				2				
							grades downward to 22.5	
	10	12						
25	10		24		45			
				21				
				21				
							26.0	
						Boring completed at 26.0 feet.		
30								
35								
40								

N=NUMBER OF BLOWS TO DRIVE 2 " SPOON 12 " WITH 140 lb. WT. FALLING 30 " PER BLOW

LOGGED BY Jason Kryszak, Geologist, (cns)

SHEET 2 OF 2