



1321 Millersport Hwy., Ste. 101
Amherst · New York 14221

P. 716.691.0900
F. 716.691.4773

Bryant & Stratton Buffalo
Buffalo, NY

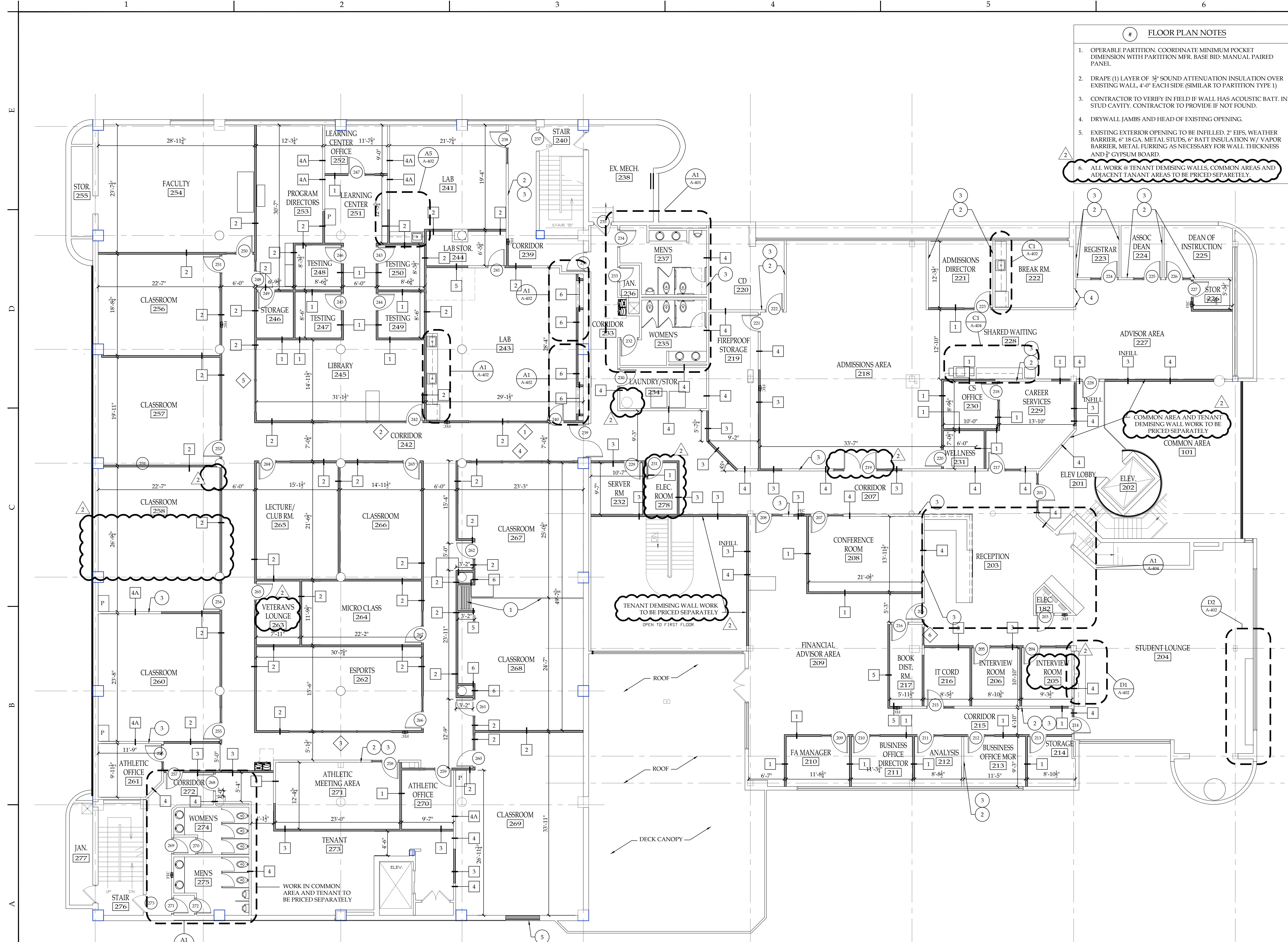
Revision 2
April 27th, 2020

This Revision is issued by the Architect and shall become part of the Contract Documents and is also subject to the terms and conditions set forth in Divisions 0 and 1.

Refer to the Contract Drawings

- Item No. 1: DELETE drawing A-101 dated 04/06/20 and REPLACE with the attached drawing A-101 Revision 2 dated 04/27/20. Micro class 259 removed, door 231 & 219 Revised, door 253 deleted, room 263 and 205 renamed.
- Item No. 2: DELETE drawing A-102 dated 04/06/20 and REPLACE with the attached drawing A-102 Revision 2 dated 04/27/20. Revised ceiling in 258 and 278.
- Item No. 3: DELETE drawing A-103 dated 04/06/20 and REPLACE with the attached drawing A-103 Revision 2 dated 04/27/20. Revised furniture layouts.
- Item No. 4: DELETE drawing A-402 dated 04/06/20 and REPLACE with the attached drawing A-402 Revision 2 dated 04/27/20. Revised millwork.
- Item No. 5: DELETE drawing A-601 dated 04/06/20 and REPLACE with the attached drawing A-601 Revision 2 dated 04/27/20. Revised door # 207, 219, and 231. Door 253 removed.
- Item No. 6: DELETE drawing A-603 dated 04/06/20 and REPLACE with the attached drawing A-603 Revision 2 dated 04/27/20. Revised finish selections.
- Item No. 7: DELETE drawing A-604 dated 04/06/20 and REPLACE with the attached drawing A-604 Revision 2 dated 04/27/20. Revised room finish schedule.
- Item No. 8: DELETE drawing A-605 dated 04/06/20 and REPLACE with the attached drawing A-605 Revision 2 dated 04/27/20. Revised finish floor plan.
- Item No. 9: DELETE drawing AD-101 dated 04/06/20 and REPLACE with the attached drawing AD-101 Revision 2 dated 04/27/20. Revised finish floor plan.

End of Revision



- # FLOOR PLAN NOTES**
- OPERABLE PARTITION. COORDINATE MINIMUM POCKET DIMENSION WITH PARTITION MFR. BASE BID: MANUAL PAIRED PANEL.
 - DRAPE (1) LAYER OF 3/8" SOUND ATTENUATION INSULATION OVER EXISTING WALL, 4'-0" EACH SIDE (SIMILAR TO PARTITION TYPE 1)
 - CONTRACTOR TO VERIFY IN FIELD IF WALL HAS ACOUSTIC BATT. IN STUD CAVITY. CONTRACTOR TO PROVIDE IF NOT FOUND.
 - DRY WALL JAMBS AND HEAD OF EXISTING OPENING.
 - EXISTING EXTERIOR OPENING TO BE INFILLED. 2" EIFS, WEATHER BARRIER, 6" 18 GA. METAL STUDS, 6" BATT INSULATION W/ VAPOR BARRIER, METAL FURRING AS NECESSARY FOR WALL THICKNESS AND 5/8" GYPSUM BOARD.
 - ALL WORK @ TENANT DEMISING WALLS, COMMON AREAS AND ADJACENT TENANT AREAS TO BE PRICED SEPARATELY.

NOTICE
 This document, the property of, prepared and issued by the architect, is submitted for the specific project named _____ and the recipient by accepting this document assumes custody and agrees that this document will not be copied or reproduced in part or in whole, and any special features peculiar to this design shall not be incorporated in any other project, unless prior agreement has been obtained in writing. These documents will be returned immediately upon completion of the project or upon the request of the architect.
 This document is the exclusive property of the architect, no rights to ownership are transferable, or shall be lost by the filing of this document with any and all public authorities for the purpose of compliance with Codes and or Ordinances, i.e. Building Permit, etc.



Bryant & Stratton
 110 Broadway
 Buffalo, NY

ISSUE:
 2020-04-06: ISSUED FOR BID
 REVISION #2 04.27.2020

SA PROJECT TEAM: PRINCIPAL P. Silvestri
 PROJ. ARCH. S. Hunt DRAFTER _____
 JOB CAPT. _____ INTERIORS N. Catuzza

SEAL:

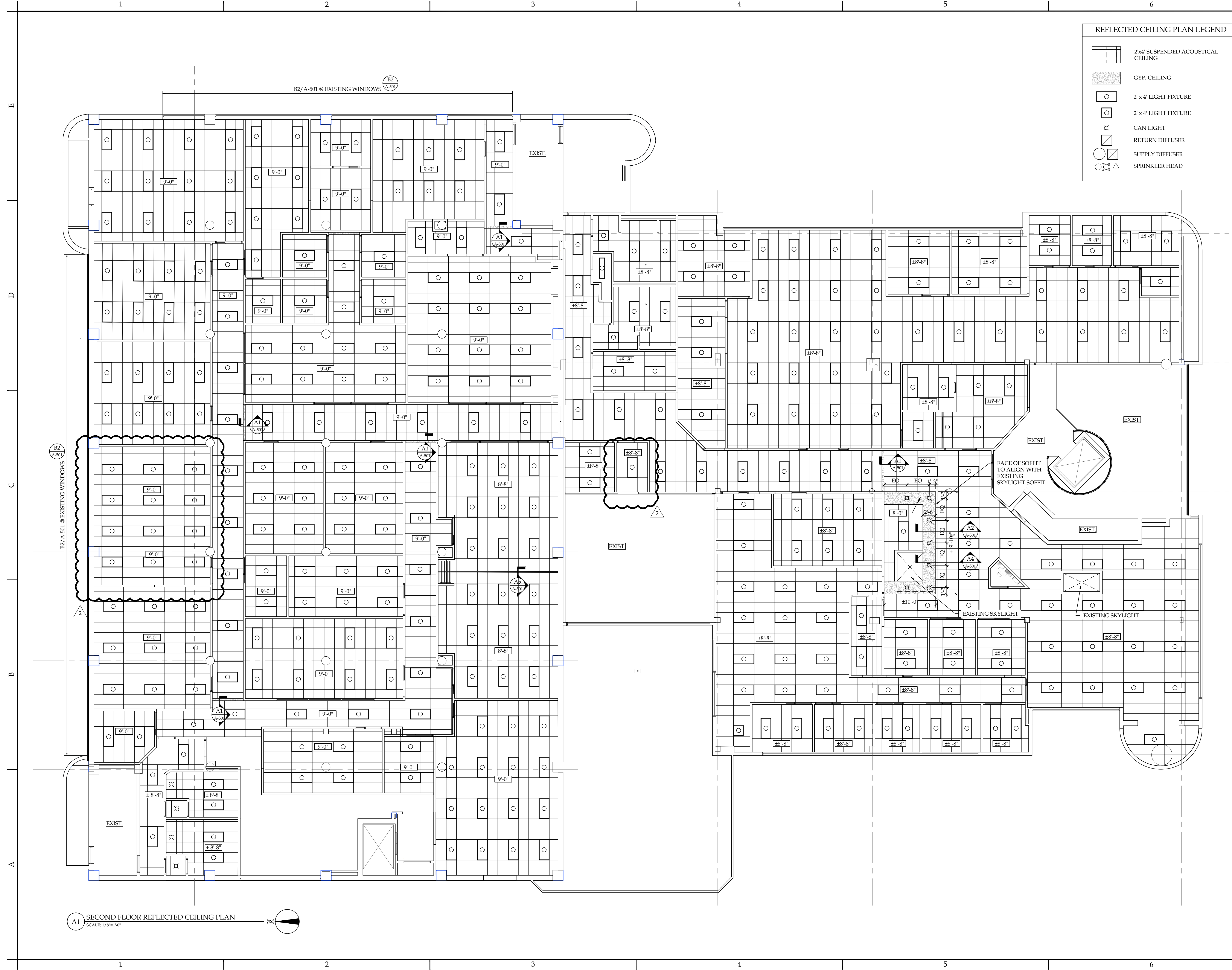
TITLE:
SECOND FLOOR PLAN



SA JOB #: 19099.02 DATE: 4-6-2020

DRAWING #: **A-101**

A1 SECOND FLOOR PLAN
 SCALE: 1/8"=1'-0"



REFLECTED CEILING PLAN LEGEND

| | |
|--|-------------------------------------|
| | 2 x 4' SUSPENDED ACOUSTICAL CEILING |
| | GYP. CEILING |
| | 2' x 4' LIGHT FIXTURE |
| | 2' x 4' LIGHT FIXTURE |
| | CAN LIGHT |
| | RETURN DIFFUSER |
| | SUPPLY DIFFUSER |
| | SPRINKLER HEAD |

NOTICE
 This document, the property of, prepared and issued by the architect, is submitted for the specific project named... and the recipient by accepting this document assumes custody and agrees that this document will not be copied or reproduced in part or in whole, and any special features peculiar to this design shall not be incorporated in any other project, unless prior agreement has been obtained in writing. These documents will be returned immediately upon completion of the project or upon the request of the architect.
 This document is the exclusive property of the architect, no rights to ownership are transferable, or shall be lost by the filing of this document with any and all public authorities for the purpose of compliance with Codes and or Ordinances, i.e. Building Permit, etc.



Bryant & Stratton
 110 Broadway
 Buffalo, NY

ISSUE:
 2020-04-06: ISSUED FOR BID
 2 REVISION #2 04.27.2020

SA PROJECT TEAM: PRINCIPAL P.Silvestri
 PROJ. ARCH. S.Hunt DRAFTER
 JOB CAPT. INTERIORS N.Catuzza

SEAL:

TITLE:
SECOND FLOOR REFLECTED CEILING PLAN



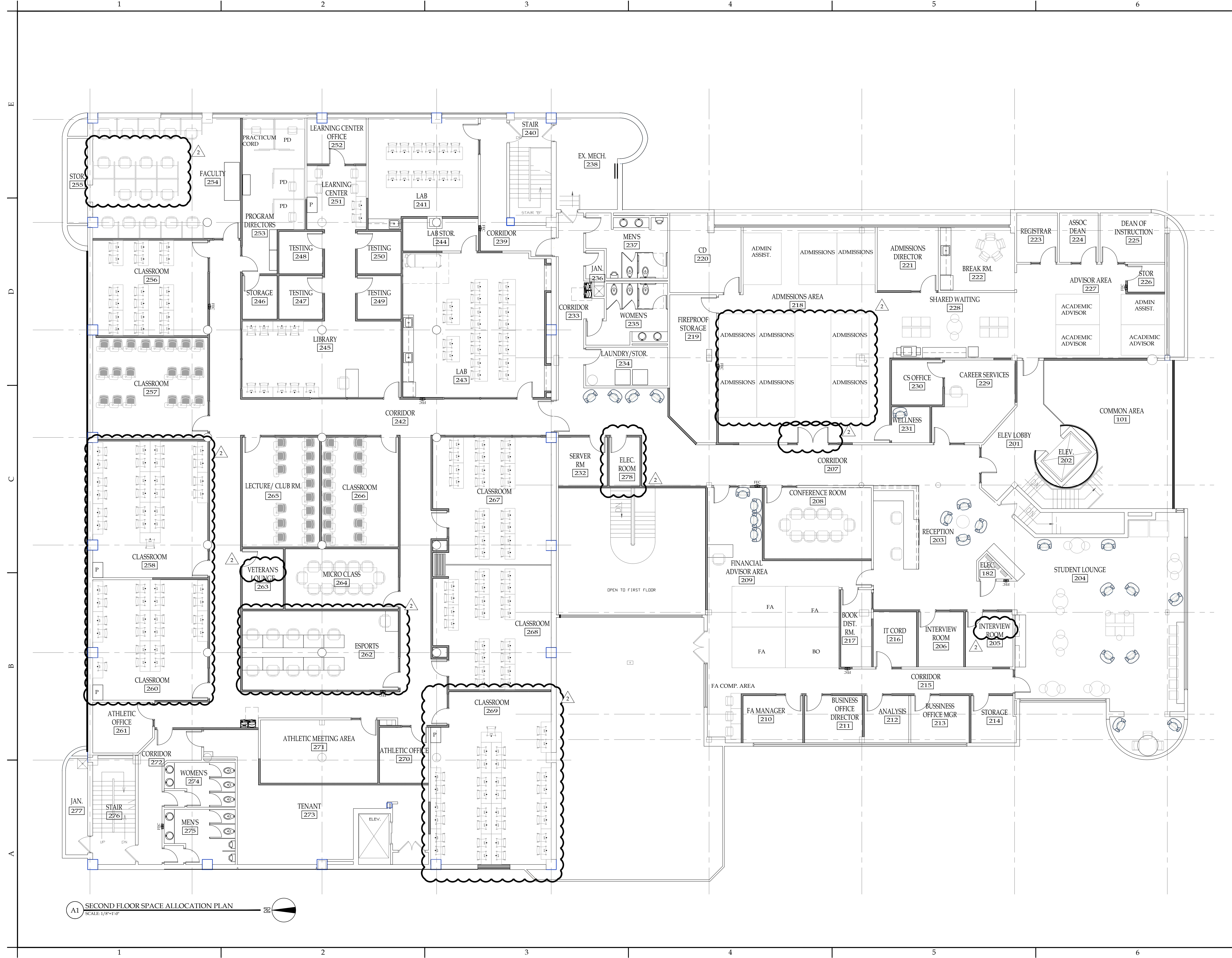
SILVESTRI ARCHITECTS · PC

1321 MILLERSPORT HWY PH. 716.691.0900
 AMHERST, NY 14221 FAX 716.691.4773

SA JOB #: 19099.02 DATE: 4-6-2020

DRAWING #: **A-102**

A1 SECOND FLOOR REFLECTED CEILING PLAN
 SCALE: 1/8"=1'-0"



A1 SECOND FLOOR SPACE ALLOCATION PLAN
SCALE: 1/8"=1'-0"

NOTICE
This document, the property of, prepared and issued by the architect, is submitted for the specific project named _____ and the recipient by accepting this document assumes custody and agrees that this document will not be copied or reproduced in part or in whole, and any special features peculiar to this design shall not be incorporated in any other project, unless prior agreement has been obtained in writing. These documents will be returned immediately upon completion of the project or upon the request of the architect.
This document is the exclusive property of the architect, no rights to ownership are transferable, or shall be lost by the filing of this document with any and all public authorities for the purpose of compliance with Codes and or Ordinances, i.e. Building Permit, etc.



Bryant & Stratton
110 Broadway
Buffalo, NY

ISSUE:
2020-04-06: ISSUED FOR BID
REVISION #2 04.27.2020

SA PROJECT TEAM: PRINCIPAL P.Silvestri
PROJ. ARCH. S.Hunt DRAFTER _____
JOB CAPT. _____ INTERIORS N.Catuzza

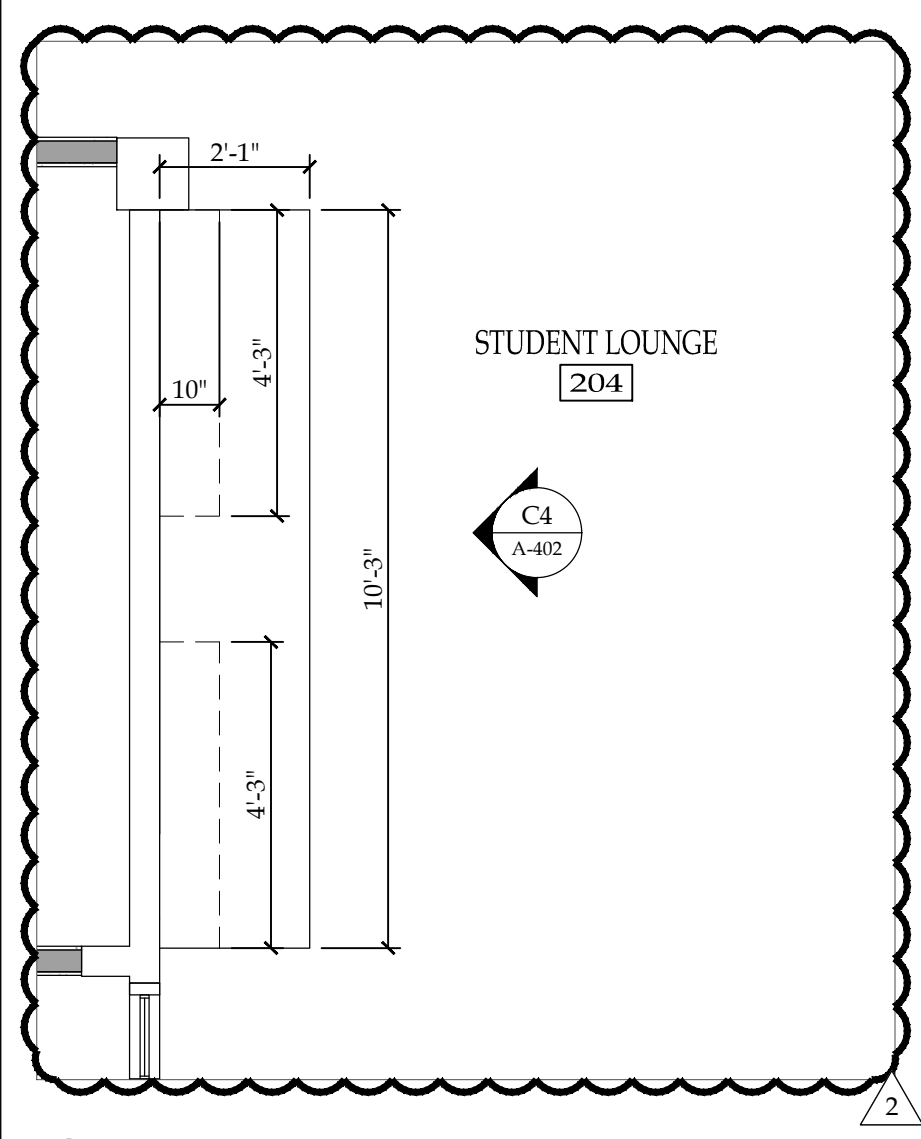
SEAL:

TITLE:
SECOND FLOOR SPACE ALLOCATION PLAN
(FOR REFERENCE ONLY)

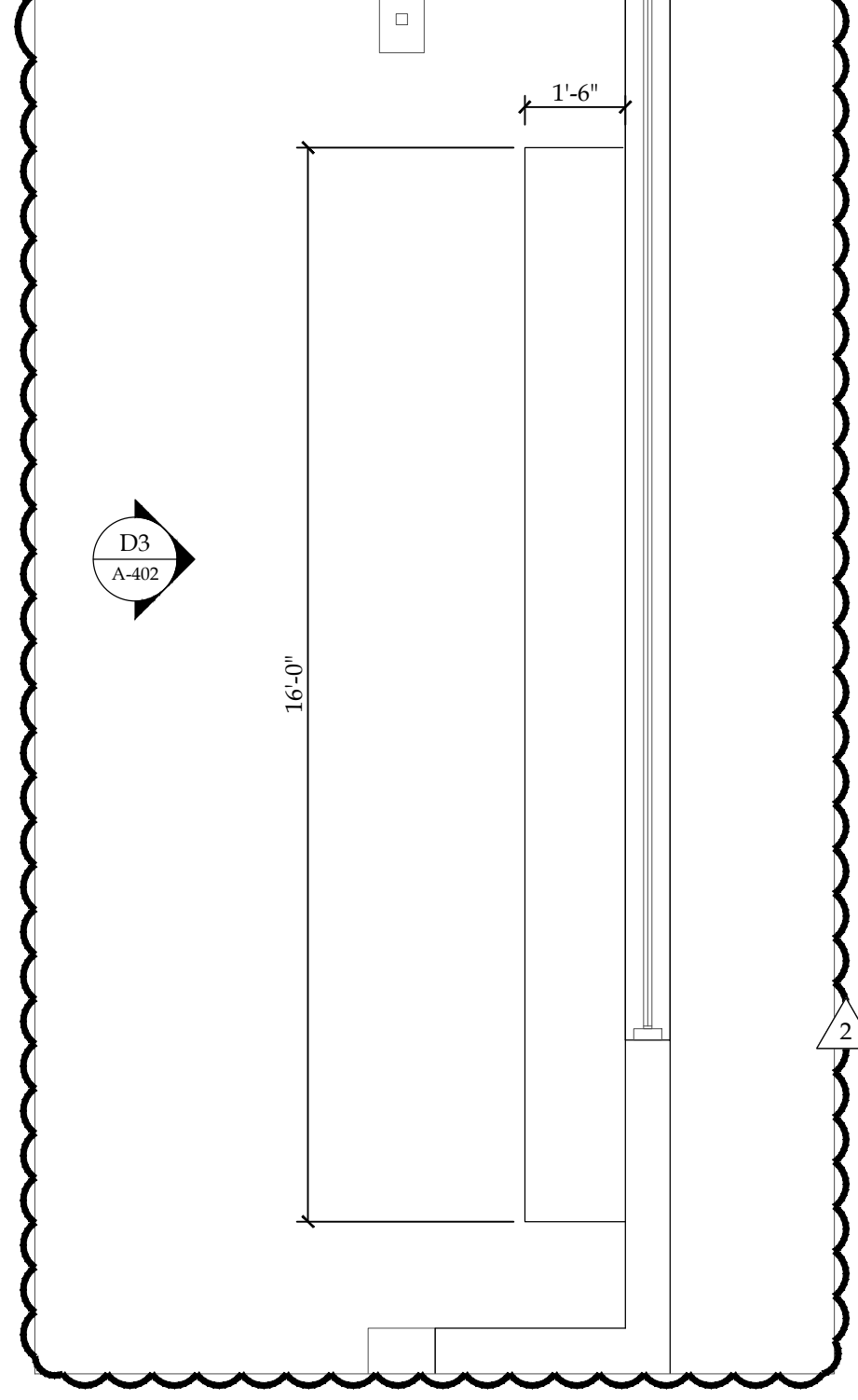


SA JOB #: 19099.02 DATE: 4-6-2020

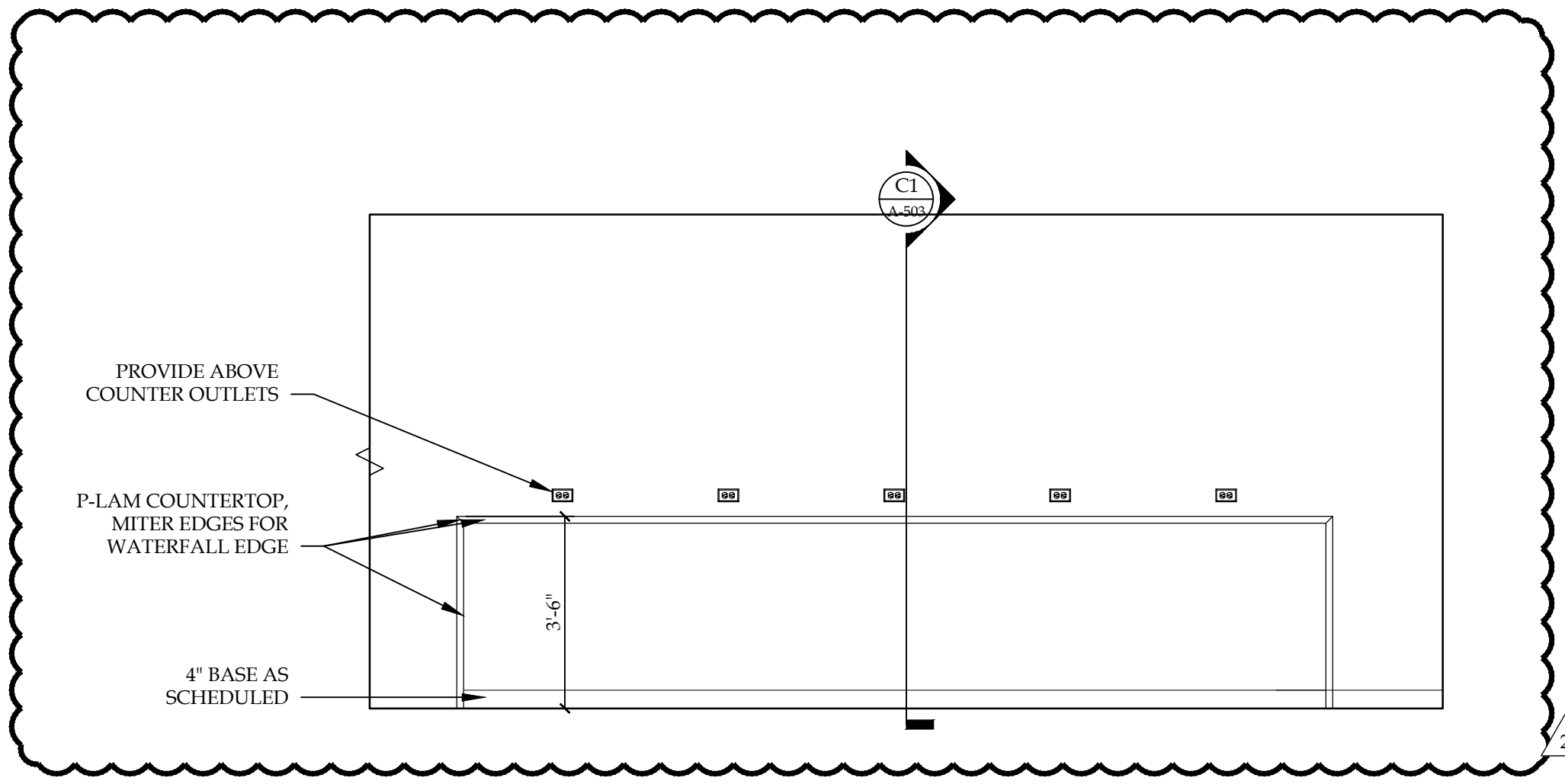
DRAWING #: A-103



D1 ENLARGED PLAN - STUDENT LOUNGE #204
SCALE: 3/8"=1'-0"

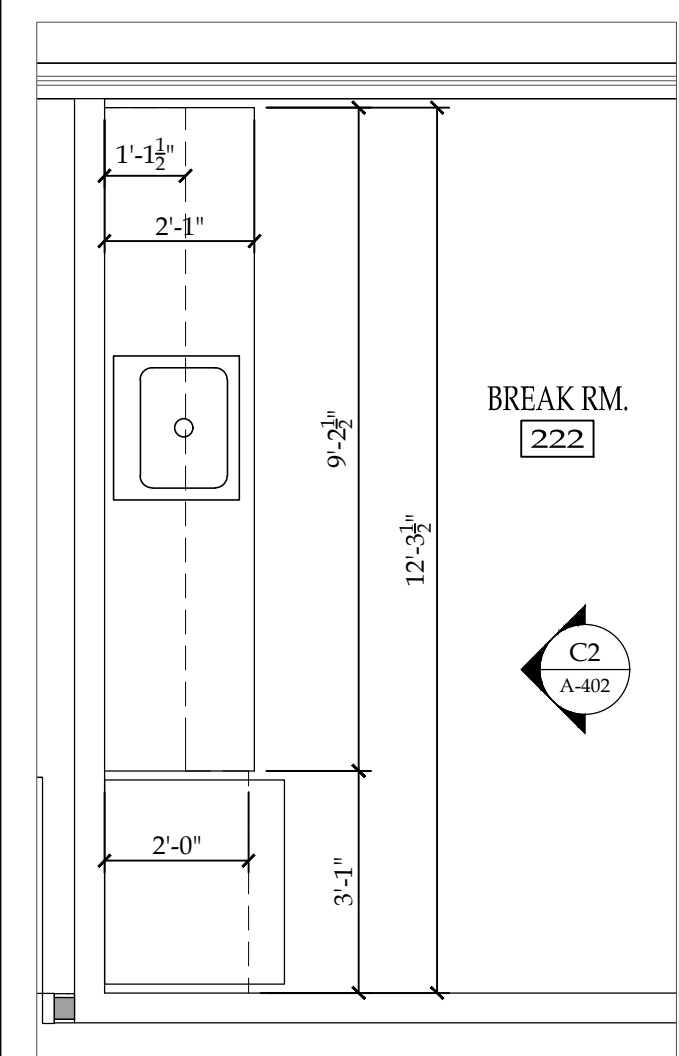


D2 ENLARGED PLAN - STUDENT LOUNGE #204
SCALE: 3/8"=1'-0"

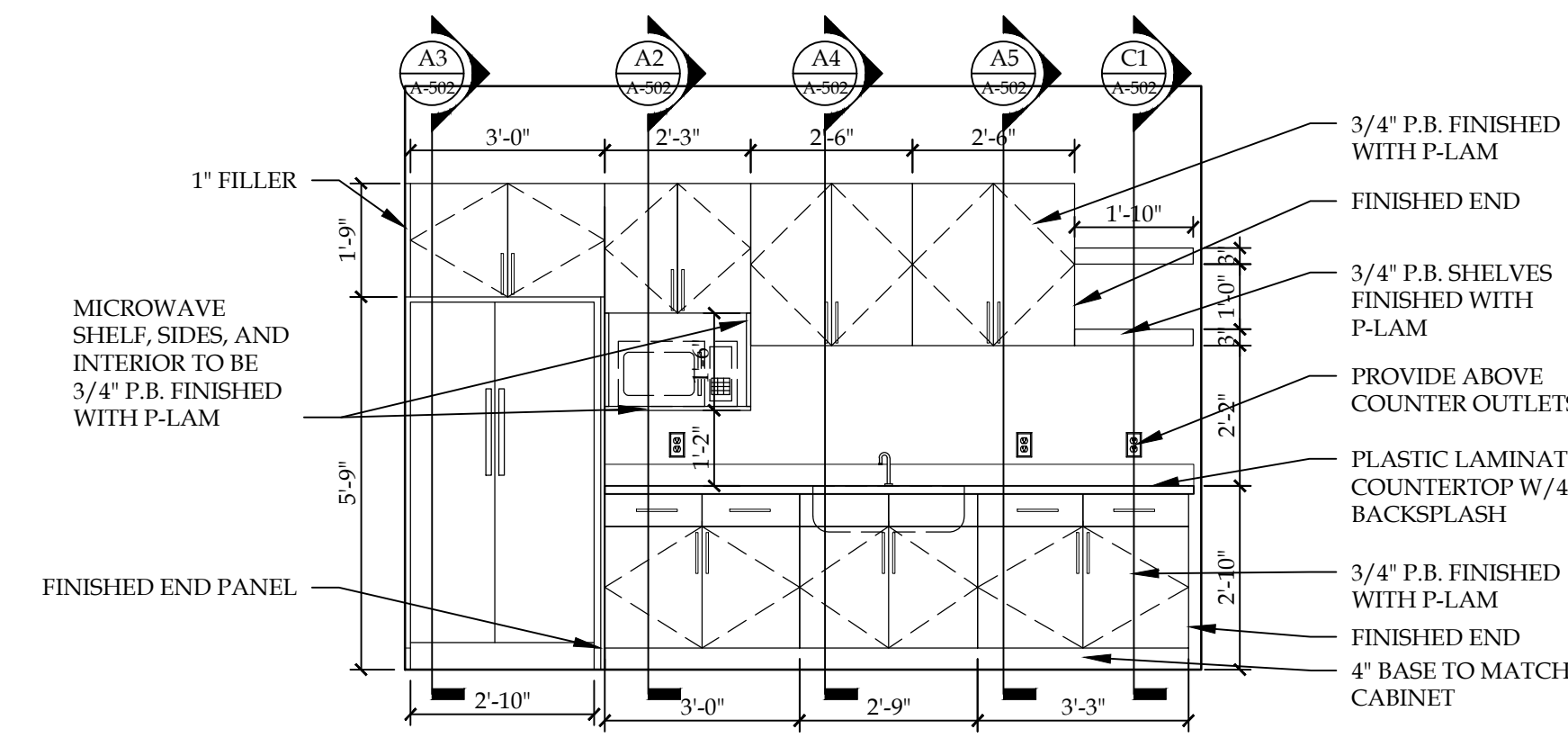


D3 ELEVATION - STUDENT LOUNGE #204
SCALE: 3/8"=1'-0"

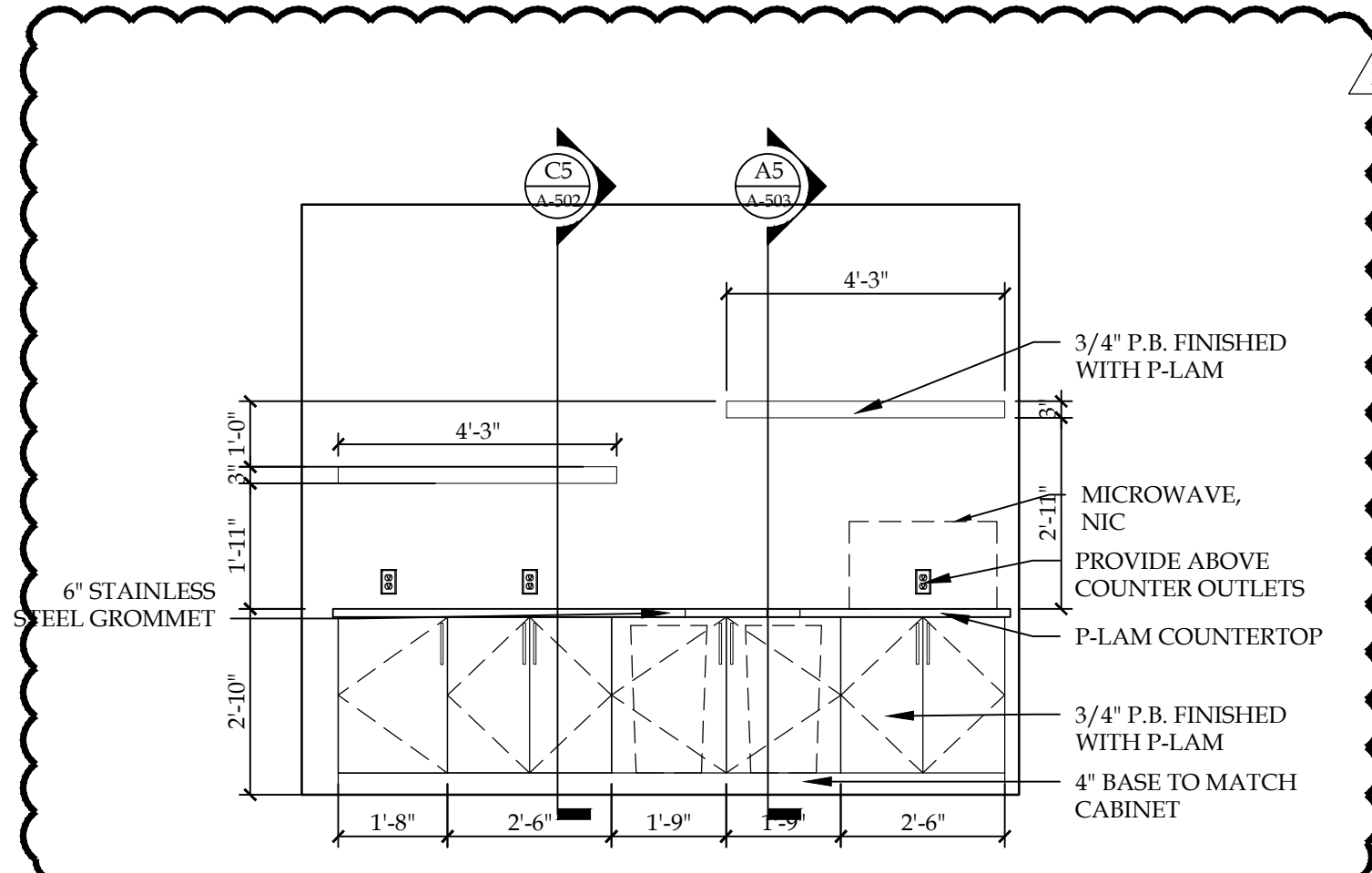
| ACCESSORIES SCHEDULE | | | | | |
|----------------------|--|--------------------------------------|----------------------------------|--------------------------------|--|
| MARK | ITEM | MODEL # | SUPPLIER | BACKUP SUPPORT | LOCATION/NOTES |
| A | 42" HORIZONTAL GRAB BAR | B-680642 | BOBRICK WASHROOM EQUIPMENT, INC. | PER MANUFACTURERS REQUIREMENTS | SEE DRAWING |
| B | 36" HORIZONTAL GRAB BAR | B-680636 | BOBRICK WASHROOM EQUIPMENT, INC. | PER MANUFACTURERS REQUIREMENTS | SEE DRAWING |
| C | 18" VERTICAL GRAB BAR | B-680618 | BOBRICK WASHROOM EQUIPMENT, INC. | PER MANUFACTURERS REQUIREMENTS | SEE DRAWING |
| D | 1/4" 18"x36" FRAMELESS PLATE GLASS MIRROR | TBD | TBD | TBD | SPACERS TO BE USED BEHIND MIRROR FOR LEVEL APPLICATION. MIRRORS TO BE MOUNTED ON STAND STAINLESS STEEL STAND OFFS. |
| E | SURFACE MOUNTED AUTOMATIC HAND SOAP DISPENSER | TBD BY COLLEGE | TBD BY COLLEGE | PER MANUFACTURERS REQUIREMENTS | SEE DRAWING. OPERABLE POINT LOCATED NO HIGHER THAN 48" A.F.F. COLOR: TBD |
| F | SURFACE MOUNTED TOILET TISSUE DISPENSER | TBD BY COLLEGE | TBD BY COLLEGE | PER MANUFACTURERS REQUIREMENTS | SEE DRAWING. |
| G | SURFACE MOUNTED AUTOMATIC PAPER TOWEL DISPENSER | 5946A | ENMOTION | PER MANUFACTURERS REQUIREMENTS | SEE DRAWING. COLOR WHITE |
| H | STAINLESS STEEL SURFACE MOUNTED COAT HOOK FOOTSTAP | B-212 | BOBRICK WASHROOM EQUIPMENT, INC. | PER MANUFACTURERS REQUIREMENTS | BACK OF RESTROOM TOILET ROOM EXCISE |
| I | SURFACE MOUNTED SANITARY WASTE RECEPTACLE | B-270 | BOBRICK WASHROOM EQUIPMENT, INC. | PER MANUFACTURERS REQUIREMENTS | SEE DRAWING |
| J | SEMI RECESSED WASTE RECEPTACLE | B-4344 | BOBRICK WASHROOM EQUIPMENT, INC. | PER MANUFACTURERS REQUIREMENTS | SEE DRAWING |
| K | TOILET PARTITIONS | ULTIMATE PRIVACY 72" NO-SIGHT SYSTEM | GLOBAL PARTITIONS | PER MANUFACTURERS REQUIREMENTS | FLOOR ANCHORED/OVERHEAD BRACED. REFER TO DRAWINGS. POWDER COATED STEEL FINISH. COLOR TBD |



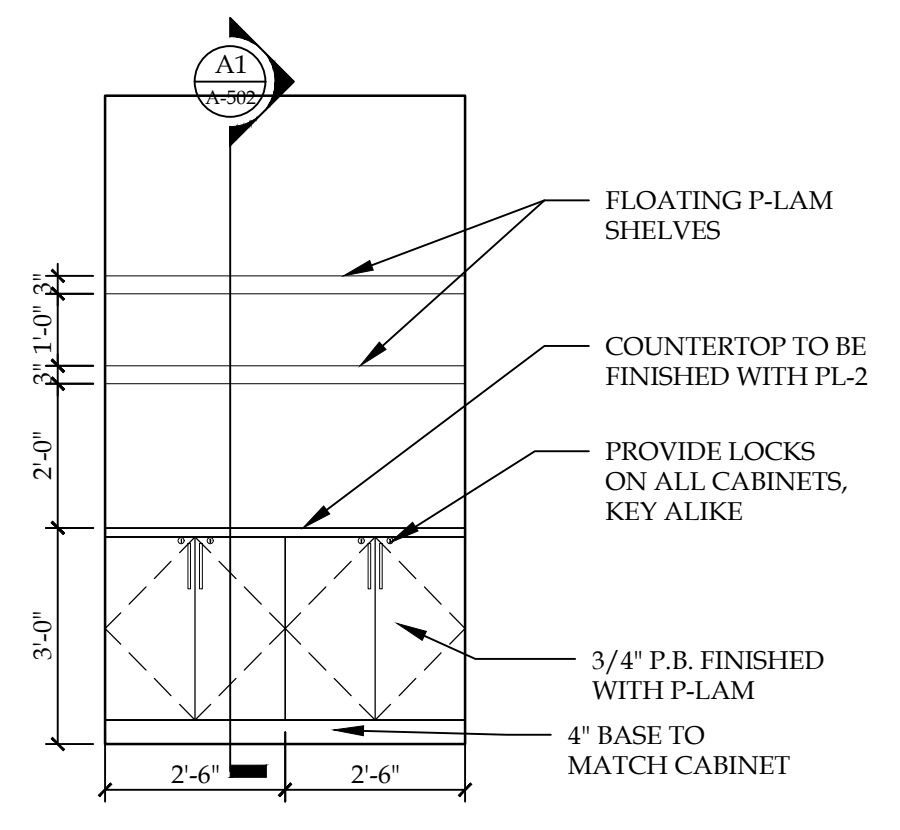
C1 ENLARGED PLAN - BREAK ROOM #222
SCALE: 3/8"=1'-0"



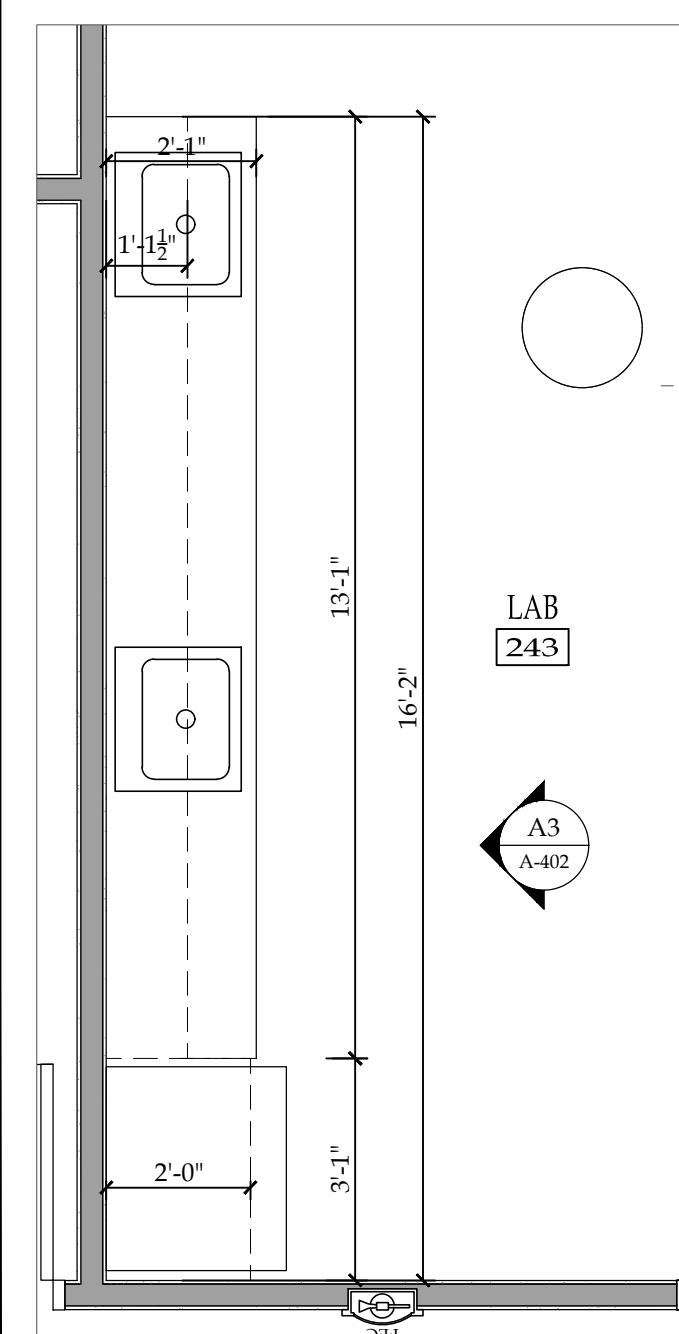
C2 ELEVATION - BREAK ROOM #222
SCALE: 3/8"=1'-0"



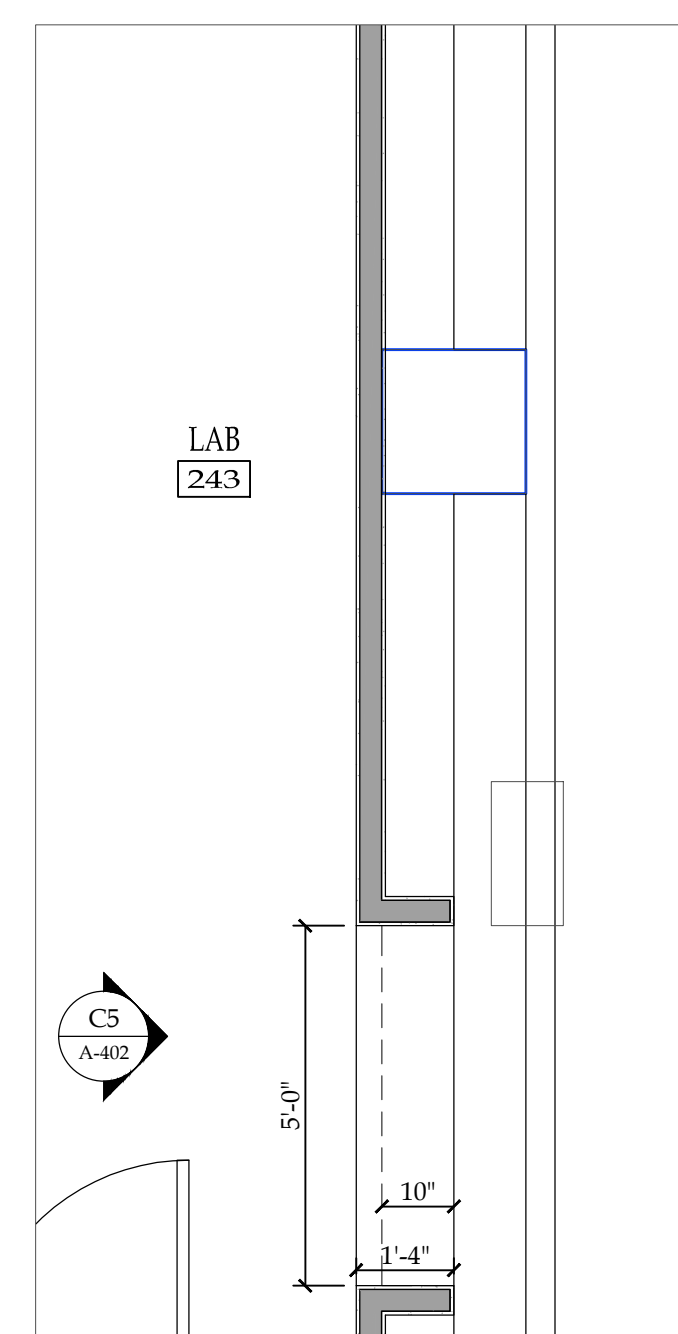
C4 ELEVATION - STUDENT LOUNGE #204
SCALE: 3/8"=1'-0"



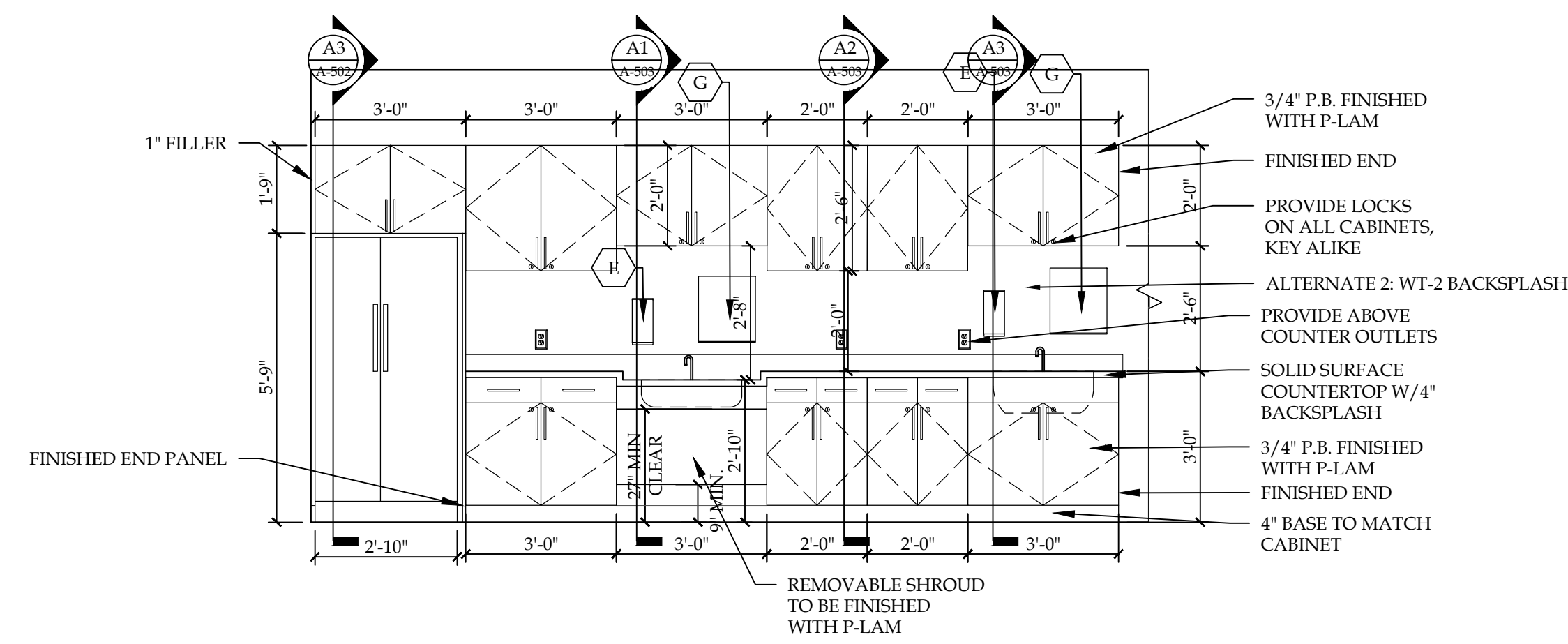
C5 ELEVATION - LAB #243
SCALE: 3/8"=1'-0"



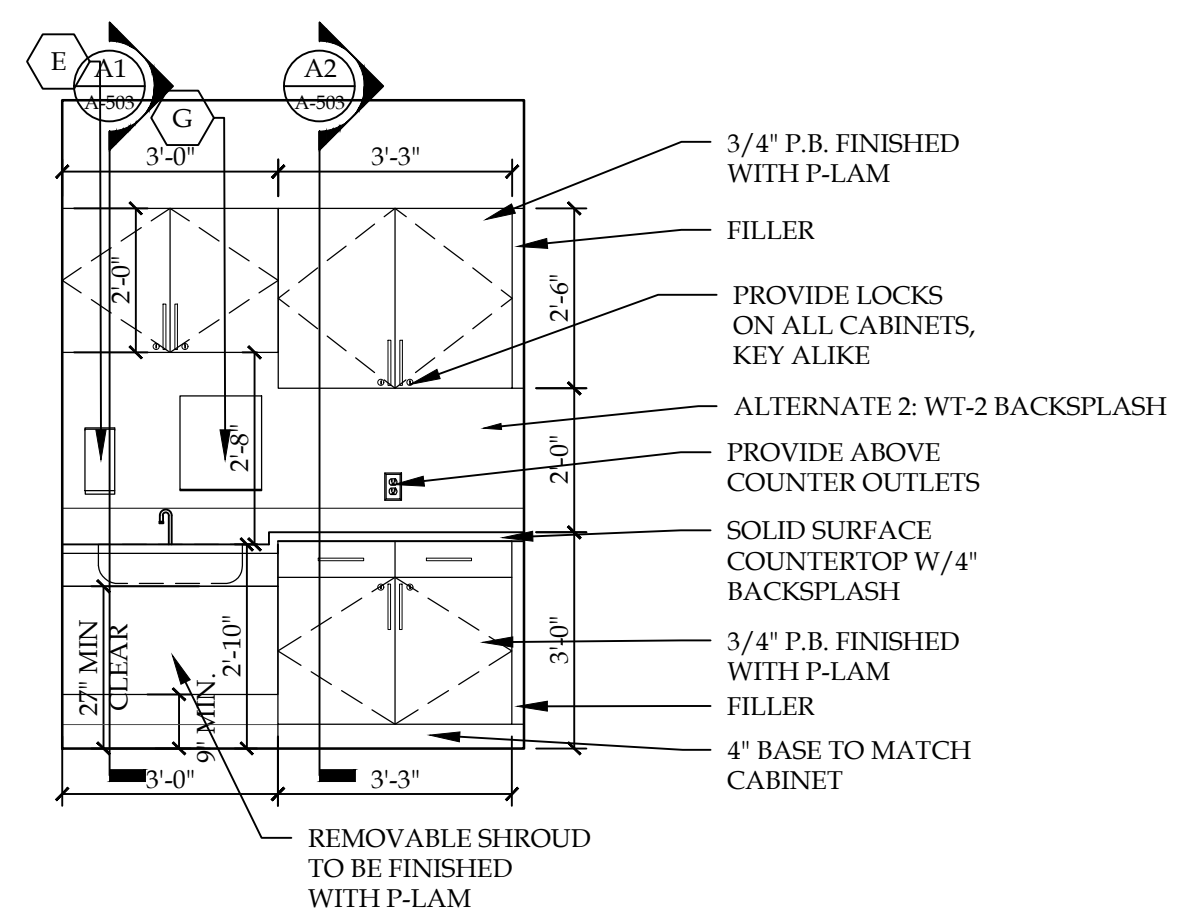
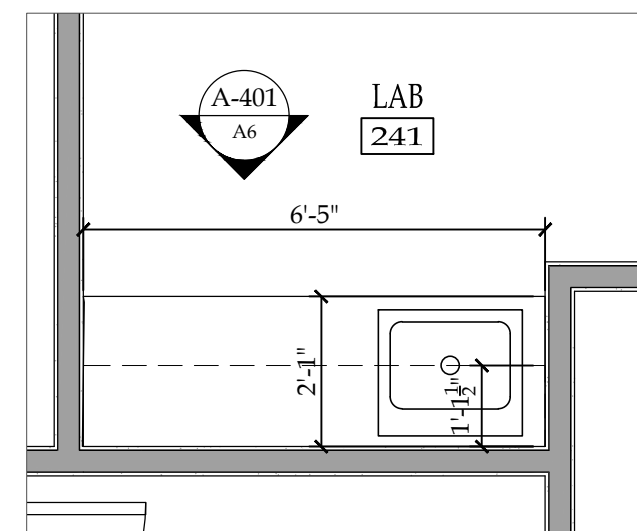
A1 ENLARGED PLAN - LAB #243
SCALE: 3/8"=1'-0"



A3 ELEVATION - LAB #243
SCALE: 3/8"=1'-0"



A5 ENLARGED PLAN - LAB #241
SCALE: 3/8"=1'-0"



A6 ELEVATION - LAB #243
SCALE: 3/8"=1'-0"

NOTICE
This document, the property of, prepared and issued by the architect, is submitted for the specific project named _____ and the recipient by accepting this document assumes custody and agrees that this document will not be copied or reproduced in part or in whole, and any special features peculiar to this design shall not be incorporated in any other project, unless prior agreement has been obtained in writing. These documents will be returned immediately upon completion of the project or upon the request of the architect.
This document is the exclusive property of the architect, no rights to ownership are transferable, or shall be lost by the filing of this document with any and all public authorities for the purpose of compliance with Codes and or Ordinances, i.e. Building Permit, etc.



Bryant & Stratton
110 Broadway
Buffalo, NY

ISSUE:
2020-04-06: ISSUED FOR BID
REVISION #2 04.27.2020

SA PROJECT TEAM: PRINCIPAL P. Silvestri
PROJ. ARCH. S. Hunt DRAFTER _____
JOB CAPT. _____ INTERIORS N. Catuzza

SEAL:

TITLE:
ENLARGED PLANS & ELEVATIONS



SILVESTRI ARCHITECTS PC
1321 MILLERSPORT HWY PH. 716.691.0900
AMHERST, NY 14221 FAX 716.691.4773

SA JOB #: 19099.02 DATE: 4-6-2020

DRAWING #: **A-402**

GENERAL NOTES

- ALL DOORS & FRAMES TO INCLUDE ALL NECESSARY HARDWARE & ACCESSORIES FOR INSTALLATION & OPERATION. ANY HARDWARE ITEM NOT SPECIFICALLY CALLED OUT, BUT REQUIRED TO MAKE ANY ASSEMBLY OPERATIONAL, SHALL BE INCLUDED BY THE HARDWARE SUPPLIER AND CONSTRUCTION MANAGER. REFER TO MANUFACTURER'S WRITTEN INSTRUCTIONS.
- HOLLOW METAL DOOR FRAMES TO MATCH DEPTH OF EXISTING WALL, (V.I.F.).
- ALL DOOR FRAME ANCHORS TO BE OF MANUFACTURER'S STANDARD WITH TYPE PER FRAME AND OPENING CONDITIONS UNLESS NOTED OTHERWISE.
- ALL EXIT DOORS SHALL BE EQUIPPED WITH PANIC HARDWARE.
- HEIGHT OF DOOR THRESHOLDS SHALL NOT EXCEED 1/2" ABOVE FINISHED FLOOR.
- ALL DOOR HARDWARE MATERIAL & FUNCTION TO BE COORDINATED WITH ARCHITECT.
- KEYING SCHEDULE TO BE DIRECTLY COORDINATED WITH OWNER, HARDWARE SUPPLIER TO PROVIDE KEY CABINET WITH CAPACITY TO STORE ONE SPARE KEY FOR EACH LOCKING DEVICE AND MASTER KEYS.
- COORDINATE AND FIELD VERIFY ALL ROUGH OPENINGS & FRAMING PRIOR TO UNIT FABRICATION OR INSTALLATION.
- MANUFACTURER SHALL ENGINEER ALL FRAME AND GLAZING ASSEMBLIES FOR ALL LOADS ACCORDING TO REQUIREMENTS OF ALL BUILDING CODES.
- PROVIDE SOLID BLOCKING AT ALL DOORS FOR WALL BUMPERS.
- ALL HOLLOW METAL DOORS AND FRAMES SHALL BE SUPPLIED SHOP PRIMED AND FIELD PAINTED PER FINISH SCHEDULE.
- PROVIDE SILENCERS AND WALL BUMPERS ON ALL OPENINGS.
- CONTRACTOR SHALL COORDINATE ANY SPECIALTY DOORS, FRAMES AND/OR HARDWARE REQUIREMENTS WITH OWNER IN FIELD PRIOR TO CONSTRUCTION.

HARDWARE SCHEDULE

* PROVIDE SOLID WOOD BLOCKING AT ALL WALL STOPS
 * ALL HARDWARE TO BE ADA COMPLIANT MORTISE LOCKSETS W/ ARCHITECTURAL LEVERS

HARDWARE SET #1: OFFICE
 3 - HINGES
 1 - OFFICE/ENTRY LOCKSET
 1 - WALL STOP
 3 - SILENCERS
 1 - PROVIDE CLOSER @ RATED DOORS

HARDWARE SET #2: STORAGE
 3 - HINGES
 1 - STOREROOM LOCKSET
 1 - WALL STOP
 3 - SILENCERS

HARDWARE SET #3: DOUBLE EGRESS
 6 - HINGES
 2 - EXIT DEVICE WITH PASSAGE SET (VERTICAL RODS)
 2 - CLOSERS
 1 - ASTRAGAL
 2 - SMOKE SEALS (3 SIDES OF EACH DOOR)
 2 - DOOR SWEEPS
 2 - MAGNETIC HOLD OPEN TIED TO FIRE ALARM

HARDWARE SET #4: BATHROOM
 3 - HINGES
 1 - PUSH PLATE / PULL BAR SET
 1 - CLOSER
 1 - WALL STOP
 3 - SILENCERS
 1 - KICKPLATE

HARDWARE SET #5: CLASSROOM
 3 - HINGES
 1 - KEYPED LOCK OUTSIDE. THUMB TURN WITH FREE EGRESS INSIDE
 1 - WALL STOP
 3 - SILENCERS

HARDWARE SET #6: FILE ROOM RATED
 3 - HINGES
 1 - STOREROOM LOCKSET
 1 - SMOKE SEAL
 1 - CLOSER
 1 - WALL STOP
 3 - SILENCERS
 1 - ELECTRIC STRIKE
 1 - COMPLETE FOB ACCESS CONTROL SYSTEM

HARDWARE SET #7: SINGLE DOOR W/ FOB
 3 - HINGES
 1 - STOREROOM LOCKSET
 1 - WALL STOP
 3 - SILENCERS
 1 - CLOSER
 1 - ELECTRIC STRIKE
 1 - COMPLETE FOB ACCESS CONTROL SYSTEM

HARDWARE SET #8: GENERAL PASSAGE
 3 - HINGES
 1 - PASSAGE SET
 1 - WALL STOP
 3 - SILENCERS
 1 - CLOSER @ RATED DOORS

HARDWARE SET #9:
 3 - HINGES
 1 - EXIT DEVICE W/ LEVER PASSAGE
 1 - CLOSER
 1 - WALL STOP
 3 - SILENCERS
 1 - ELECTRIC STRIKE
 1 - COMPLETE FOB ACCESS CONTROL SYSTEM

HARDWARE SET #10: CORRIDOR
 3 - HINGES
 1 - EXIT DEVICE - PASSAGE LEVER SET
 1 - CLOSER
 1 - WALL STOP
 3 - SILENCERS
 1 - MAGNETIC HOLD OPEN TIED TO FIRE ALARM

HARDWARE SET #11:
 3 - HINGES
 1 - PRIVACY SET
 1 - WALL STOP
 3 - SILENCERS

HARDWARE SET #12:
 1 - NEW PANIC BAR ON EXISTING DOOR
 1 - ELECTRIC STRIKE
 1 - COMPLETE FOB ACCESS CONTROL SYSTEM

HARDWARE SET #13: DOUBLE DOOR W/ FOB
 6 - HINGES
 1 - MANUAL FLUSH BOLT (INACTIVE LEAF)
 1 - STOREROOM LOCKSET (ACTIVE LEAF)
 1 - ELECTRIC STRIKE
 2 - CLOSERS
 6 - SILENCERS
 1 - POWER TRANSFER
 1 - COMPLETE FOB ACCESS CONTROL SYSTEM

DOOR AND FRAME SCHEDULE

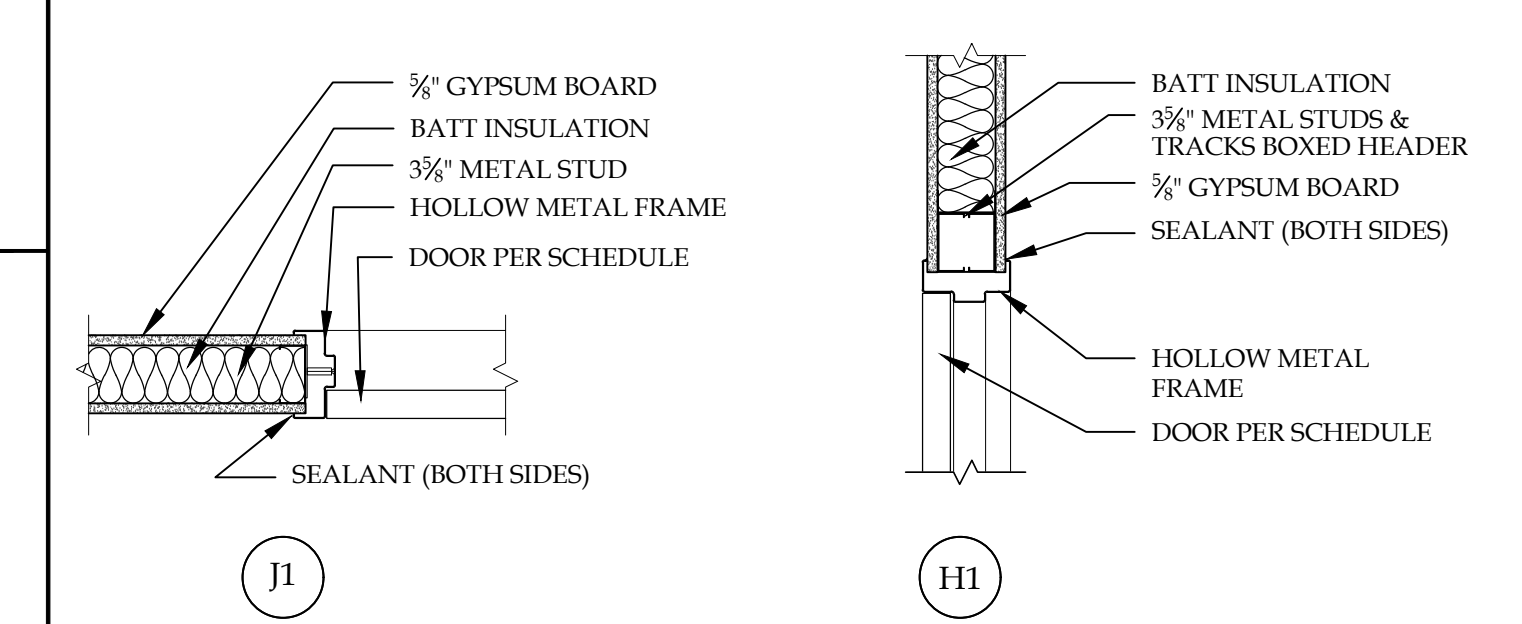
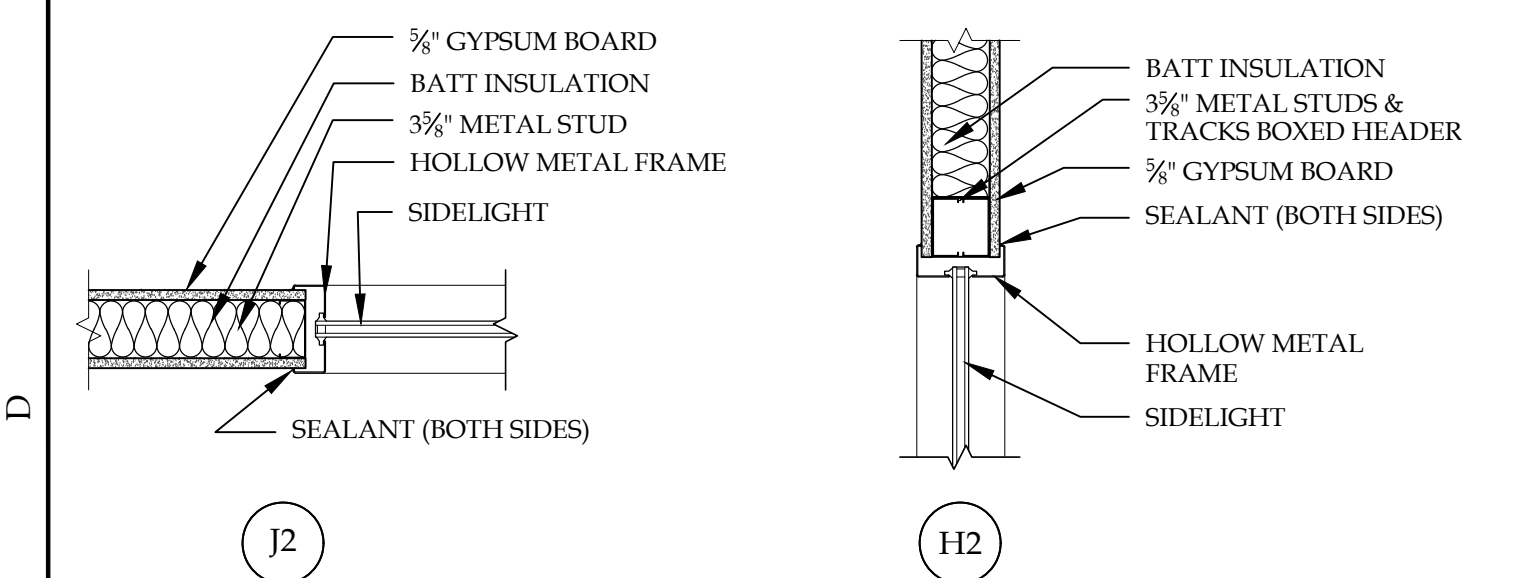
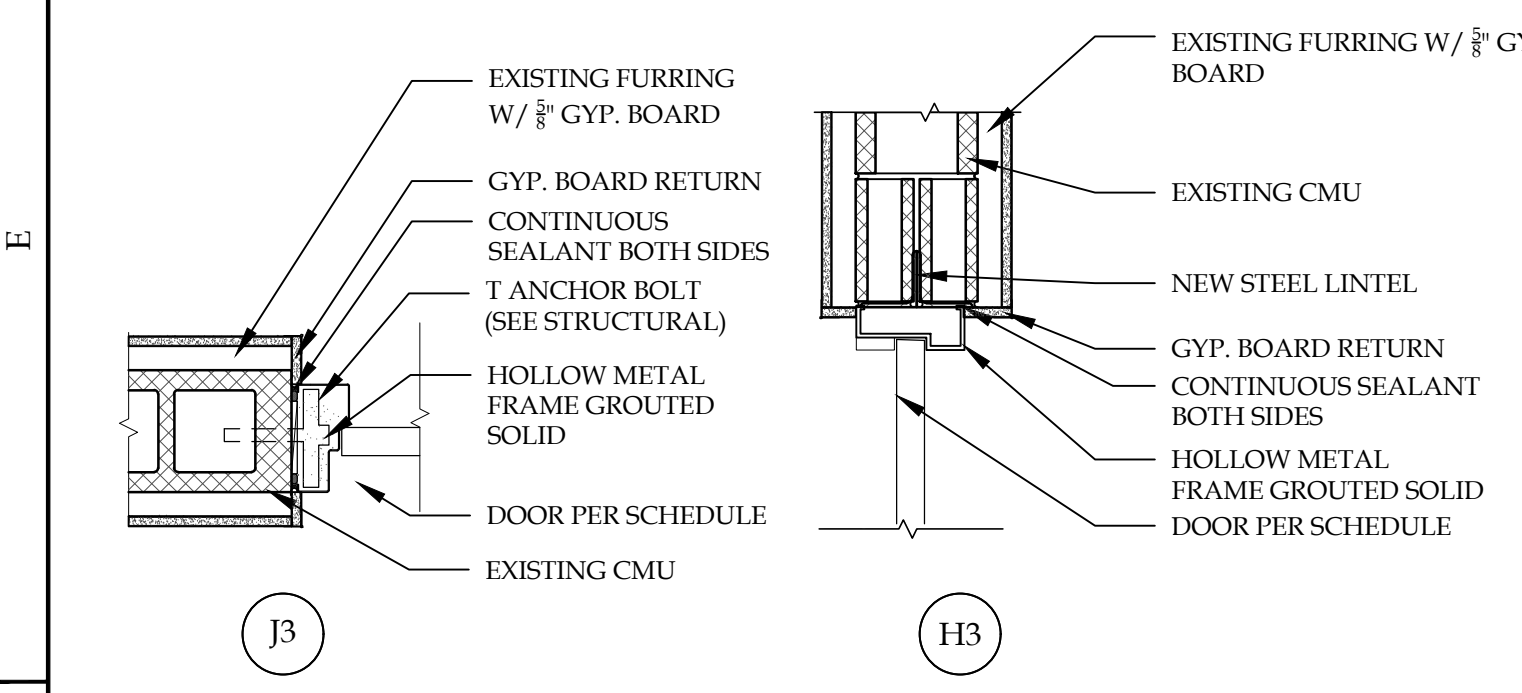
| DOOR NO. | LOCATION | DOORS | | | FRAMES | | | | FIRE RATING | HDW SET # | REMARKS | | | |
|----------|------------------------|-----------|--------|--------|-----------|------|---------|---------|-------------|-----------|---------|-------------|--------------|-------|
| | | WIDTH | HEIGHT | THK | DOOR TYPE | MATL | GLAZING | MATL | | | | FRAM E TYPE | DETAILS HEAD | JAMB |
| 201 | MAIN TENANT ENTRY | 3'-0" | 7'-0" | 1 1/4" | FG | SCWD | - | HM | B | H1/H2 | J1/J2 | 60 MIN | 9 | 3 |
| 202 | EXIST. STAIR | EX | EX | EX | EX | EX | EX | EX | EX | EX | EX | | | 1 |
| 203 | ELECTRICAL | 3'-0" | 7'-0" | 1 1/4" | F | SCWD | - | - | EX | -- | -- | | 2 | |
| 204 | INTERVIEW ROOM | 3'-0" | 7'-0" | 1 1/4" | F | SCWD | - | HM | D | H1/H2 | J1/J2 | 45 MIN | 7 | 3 |
| 205 | VETERANS LOUNGE | 3'-0" | 7'-0" | 1 1/4" | F | SCWD | - | HM | D | H1/H2 | J1/J2 | 45 MIN | 7 | 3 |
| 206 | FINANCIAL ADVISOR | 3'-0" | 7'-0" | 1 1/4" | F | SCWD | - | HM | A | H1 | J1 | 45 MIN | 7 | |
| 207 | CONFERENCE ROOM | 3'-0" | 7'-0" | 1 1/4" | FG | SCWD | - | HM | D | H1/H2 | J1/J2 | 45 MIN | 8 | 3 |
| 208 | FINANCIAL ADVISOR | 3'-0" | 7'-0" | 1 1/4" | F | SCWD | - | HM | C | H1/H2 | J1/J2 | 45 MIN | 7 | 3 |
| 209 | FA MANAGER | 3'-0" | 7'-0" | 1 1/4" | F | SCWD | - | HM | C | H1/H2 | J1/J2 | | 1 | |
| 210 | BUSINESS OFFICE DIR. | 3'-0" | 7'-0" | 1 1/4" | F | SCWD | - | HM | C | H1/H2 | J1/J2 | | 1 | |
| 211 | ANALYSIS | 3'-0" | 7'-0" | 1 1/4" | F | SCWD | - | HM | C | H1/H2 | J1/J2 | | 1 | |
| 212 | BUSINESS OFFICE MGR | 3'-0" | 7'-0" | 1 1/4" | F | SCWD | - | HM | C | H1/H2 | J1/J2 | | 1 | |
| 213 | STORAGE | 3'-0" | 7'-0" | 1 1/4" | F | SCWD | - | HM | A | H1 | J1 | | 2 | |
| 214 | CORRIDOR 215 | 3'-0" | 7'-0" | 1 1/4" | F | SCWD | - | HM | E | H1/H2 | J1/J2 | 45 MIN | 7 | 3 |
| 215 | IT CORD. | 3'-0" | 7'-0" | 1 1/4" | F | SCWD | - | HM | C | H1/H2 | J1/J2 | | 1 | |
| 216 | BOOK DIST. ROOM | 3'-0" | 7'-0" | 1 1/4" | F | SCWD | - | HM | A | H1 | J1 | | 7 | |
| 217 | CAREER SERVICES | 3'-0" | 7'-0" | 1 1/4" | F | SCWD | - | HM | D | H1/H2 | J1/J2 | 45 MIN | 1 | 3 |
| 218 | CAREER SERVICES OFFICE | 3'-0" | 7'-0" | 1 1/4" | F | SCWD | - | HM | C | H1/H2 | J1/J2 | | 1 | |
| 219 | ADMISSIONS AREA | 2'-3-0" | 7'-0" | 1 1/4" | FG | SCWD | - | HM | B | H1/H2 | J1/J2 | 45 MIN | 13 | 3 |
| 220 | WELLNESS | 3'-0" | 7'-0" | 1 1/4" | F | SCWD | - | HM | A | H1 | J1 | | 11 | |
| 221 | FIREPROOF STORAGE | 3'-0" | 7'-0" | 1 1/4" | F | SCWD | - | HM | A | H1 | J1 | 45 MIN | 6 | |
| 222 | CD | 3'-0" | 7'-0" | 1 1/4" | NL | SCWD | - | HM | A | H1 | J1 | | 1 | |
| 223 | ADMISSIONS DIRECTOR | 3'-0" | 7'-0" | 1 1/4" | F | SCWD | - | HM | C | H1/H2 | J1/J2 | | 1 | |
| 224 | REGISTRAR | 3'-0" | 7'-0" | 1 1/4" | F | SCWD | - | HM | C | H1/H2 | J1/J2 | | 1 | |
| 225 | ASSOCIATE DEAN | 3'-0" | 7'-0" | 1 1/4" | F | SCWD | - | HM | C | H1/H2 | J1/J2 | | 1 | |
| 226 | DEAN OF INSTRUCTION | 3'-0" | 7'-0" | 1 1/4" | F | SCWD | - | HM | E | H1/H2 | J1/J2 | | 1 | |
| 227 | STORAGE | 3'-0" | 7'-0" | 1 1/4" | F | SCWD | - | HM | A | H1 | J1 | | 7 | |
| 228 | ADVISOR AREA EXIT | 3'-0" | 7'-0" | 1 1/4" | F | SCWD | - | HM | A | H1 | J1 | 60 MIN. | 7 | |
| 229 | SERVER | 3'-0" | 7'-0" | 1 1/4" | F | SCWD | - | HM | A | H1 | J1 | 45 MIN | 7 | |
| 230 | LAUNDRY/STORAGE | 3'-0" | 7'-0" | 1 1/4" | F | SCWD | - | EX | A | H1 | J1 | 45 MIN | 7 | |
| 231 | ELEC. ROOM | 3'-0" | 7'-0" | 1 1/4" | F | SCWD | - | HM | A | H1 | J1 | 45 MIN | 7 | |
| 232 | WOMEN'S | ±3'-0" | ±7'-0" | 1 1/4" | F | SCWD | - | EX | - | - | - | | 4 | 2 |
| 233 | JANITOR | ±3'-0" | ±7'-0" | 1 1/4" | F | SCWD | - | EX | - | - | - | | 2 | 2 |
| 234 | MEN'S | ±3'-0" | ±7'-0" | 1 1/4" | F | SCWD | - | EX | - | - | - | | 4 | 2 |
| 235 | EX. MECH. | EX | EX | EX | EX | EX | EX | EX | EX | EX | EX | | 2 | 1 |
| 236 | CORRIDOR 239 | ±3'-4" | ±7'-0" | 1 1/4" | F | SCWD | - | EX | A | H1 | J1 | 90 MIN. | 10 | |
| 237 | STAIR | EX | EX | EX | EX | EX | EX | EX | EX | EX | EX | | 12 | 1.4 |
| 238 | LAB | 3'-0" | 7'-0" | 1 1/4" | F | SCWD | - | HM | D | H1/H2 | J1/J2 | | 7 | |
| 239 | CORRIDOR | (2) 3'-0" | 7'-0" | 1 1/4" | F | SCWD | - | HM | A | H3 | J3 | 90 MIN. | 3 | |
| 240 | LAB | ±3'-0" | ±7'-0" | 1 1/4" | F | SCWD | - | EX ALUM | WINDOW 1 | - | - | | 7 | |
| 241 | LAB STORAGE | 3'-0" | 7'-0" | 1 1/4" | F | SCWD | - | HM | A | H1 | J1 | | 2 | |
| 242 | LIBRARY | ±3'-0" | ±7'-0" | 1 1/4" | F | SCWD | - | EX ALUM | WINDOW 2 | - | - | | 8 | |
| 243 | TESTING | 3'-0" | 7'-0" | 1 1/4" | NL | SCWD | - | HM | A | H1 | J1 | | 8 | |
| 244 | TESTING | 3'-0" | 7'-0" | 1 1/4" | NL | SCWD | - | HM | A | H1 | J1 | | 8 | |
| 245 | TESTING | 3'-0" | 7'-0" | 1 1/4" | NL | SCWD | - | HM | A | H1 | J1 | | 8 | |
| 246 | TESTING | 3'-0" | 7'-0" | 1 1/4" | NL | SCWD | - | HM | A | H1 | J1 | | 8 | |
| 247 | LEARNING CNTR OFFICE | 3'-0" | 7'-0" | 1 1/4" | F | SCWD | - | HM | C | H1/H2 | J1/J2 | | 1 | |
| 248 | PROGRAM DIRECTORS | 3'-0" | 7'-0" | 1 1/4" | F | SCWD | - | HM | C | H1/H2 | J1/J2 | | 7 | |
| 249 | STORAGE | 3'-0" | 7'-0" | 1 1/4" | F | SCWD | - | HM | A | H1 | J1 | | 2 | |
| 250 | FACULTY | 3'-0" | 7'-0" | 1 1/4" | F | SCWD | - | HM | C | H1/H2 | J1/J2 | | 7 | |
| 251 | CLASSROOM | 3'-0" | 7'-0" | 1 1/4" | F | SCWD | - | HM | D | H1/H2 | J1/J2 | | 5 | |
| 252 | CLASSROOM | 3'-0" | 7'-0" | 1 1/4" | F | SCWD | - | HM | D | H1/H2 | J1/J2 | | 5 | |
| 253 | NOT USED | - | - | - | - | - | - | - | - | - | - | | - | - |
| 254 | MICRO CLASS | 3'-0" | 7'-0" | 1 1/4" | F | SCWD | - | HM | C | H1/H2 | J1/J2 | | 5 | |
| 255 | CLASSROOM | 3'-0" | 7'-0" | 1 1/4" | F | SCWD | - | HM | D | H1/H2 | J1/J2 | | 5 | |
| 256 | ATHLETIC OFFICE | 3'-0" | 7'-0" | 1 1/4" | F | SCWD | - | HM | E | H1/H2 | J1/J2 | | 7 | |
| 257 | CORRIDOR 272 | 3'-0" | 7'-0" | 1 1/4" | NL | SCWD | FR | HM | A | H1 | J1 | 45 MIN. | 9 | 3 |
| 258 | ATHLETIC MEETING AREA | 3'-0" | 7'-0" | 1 1/4" | F | SCWD | - | HM | C | H1/H2 | J1/J2 | | 7 | |
| 259 | ATHLETIC OFFICE | 3'-0" | 7'-0" | 1 1/4" | F | SCWD | - | HM | C | H1/H2 | J1/J2 | | 5 | |
| 260 | CLASSROOM | 3'-0" | 7'-0" | 1 1/4" | F | SCWD | - | HM | D | H1/H2 | J1/J2 | | 5 | |
| 261 | CLASSROOM | 3'-0" | 7'-0" | 1 1/4" | F | SCWD | - | HM | C | H1/H2 | J1/J2 | | 5 | |
| 262 | CLASSROOM | 3'-0" | 7'-0" | 1 1/4" | F | SCWD | - | HM | C | H1/H2 | J1/J2 | | 5 | |
| 263 | CLASSROOM | 3'-0" | 7'-0" | 1 1/4" | F | SCWD | - | HM | D | H1/H2 | J1/J2 | | 5 | |
| 264 | LECTURE / CLUB RM. | 3'-0" | 7'-0" | 1 1/4" | F | SCWD | - | HM | D | H1/H2 | J1/J2 | | 5 | |
| 265 | PATHWAYS | 3'-0" | 7'-0" | 1 1/4" | F | SCWD | - | HM | C | H1/H2 | J1/J2 | | 7 | |
| 266 | ESPORTS | 3'-0" | 7'-0" | 1 1/4" | F | SCWD | - | HM | D | H1/H2 | J1/J2 | | 7 | |
| 267 | MICRO CLASS | 3'-0" | 7'-0" | 1 1/4" | F | SCWD | - | HM | D | H1/H2 | J1/J2 | | 5 | |
| 268 | TENANT | 3'-0" | 7'-0" | 1 1/4" | F | SCWD | - | HM | A | H1 | J1 | 45 MIN. | 1 | |
| 269 | WOMEN'S | ±3'-0" | ±7'-0" | 1 1/4" | F | SCWD | - | EX | - | - | - | | 4 | 1.2,5 |
| 270 | WOMEN'S | ±3'-0" | ±7'-0" | 1 1/4" | F | SCWD | - | EX | - | - | - | | 4 | 1.2,5 |
| 271 | MEN'S | ±3'-0" | ±7'-0" | 1 1/4" | F | SCWD | - | EX | - | - | - | | 4 | 1.2,5 |
| 272 | MEN'S | ±3'-0" | ±7'-0" | 1 1/4" | F | SCWD | - | EX | - | - | - | | 4 | 1.2,5 |
| 273 | EXIST. STAIR | EX | EX | EX | EX | EX | EX | EX | EX | EX | EX | | | 1.5 |

REMARKS

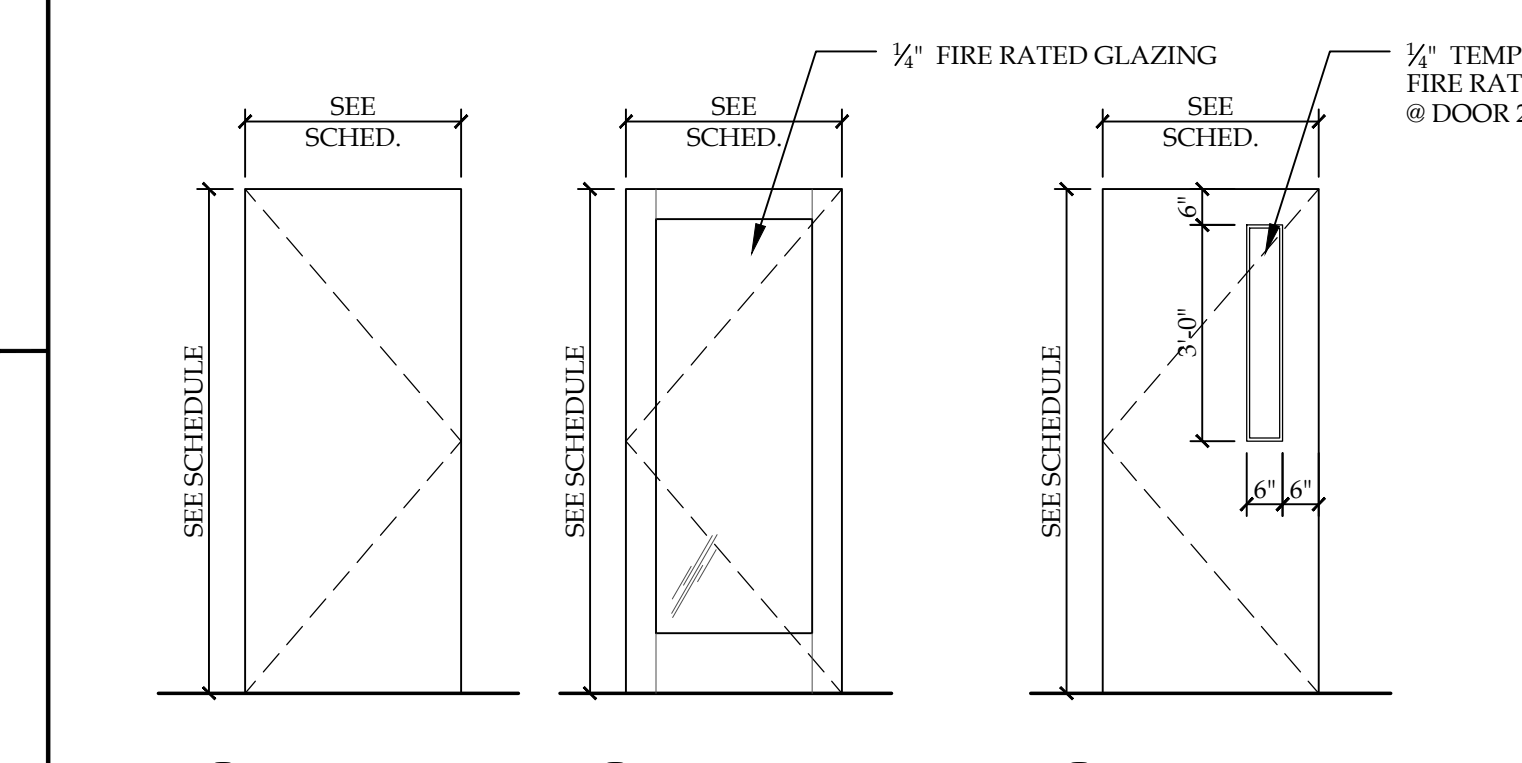
- EXISTING DOOR AND FRAME TO BE PAINTED.
- NEW DOOR IN EXISTING FRAME. VERIFY SIZE IN FIELD. EXISTING FRAME TO BE PAINTED.
- INSTALL FIRE RATED GLAZING IN RATED OPENING LOCATIONS
- REFURBISH EXISTING HARDWARE TO REMAIN.
- WORK IN COMMON AREA AND TENANT AREA TO BE PRICED SEPARATELY

MATERIAL LEGEND

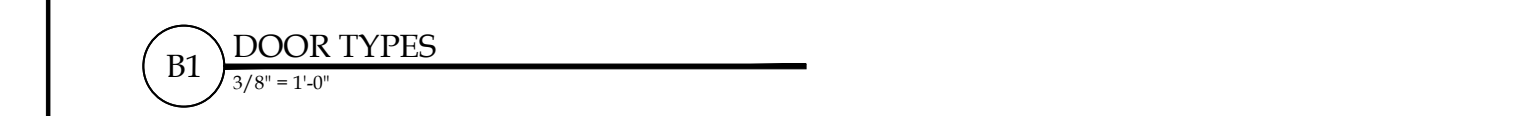
ALUM = ALUMINUM
 HM = HOLLOW METAL
 MTL = METAL
 SCWD = SOLID CORE WOOD
 TI = 1/2" TEMPERED GLAZING



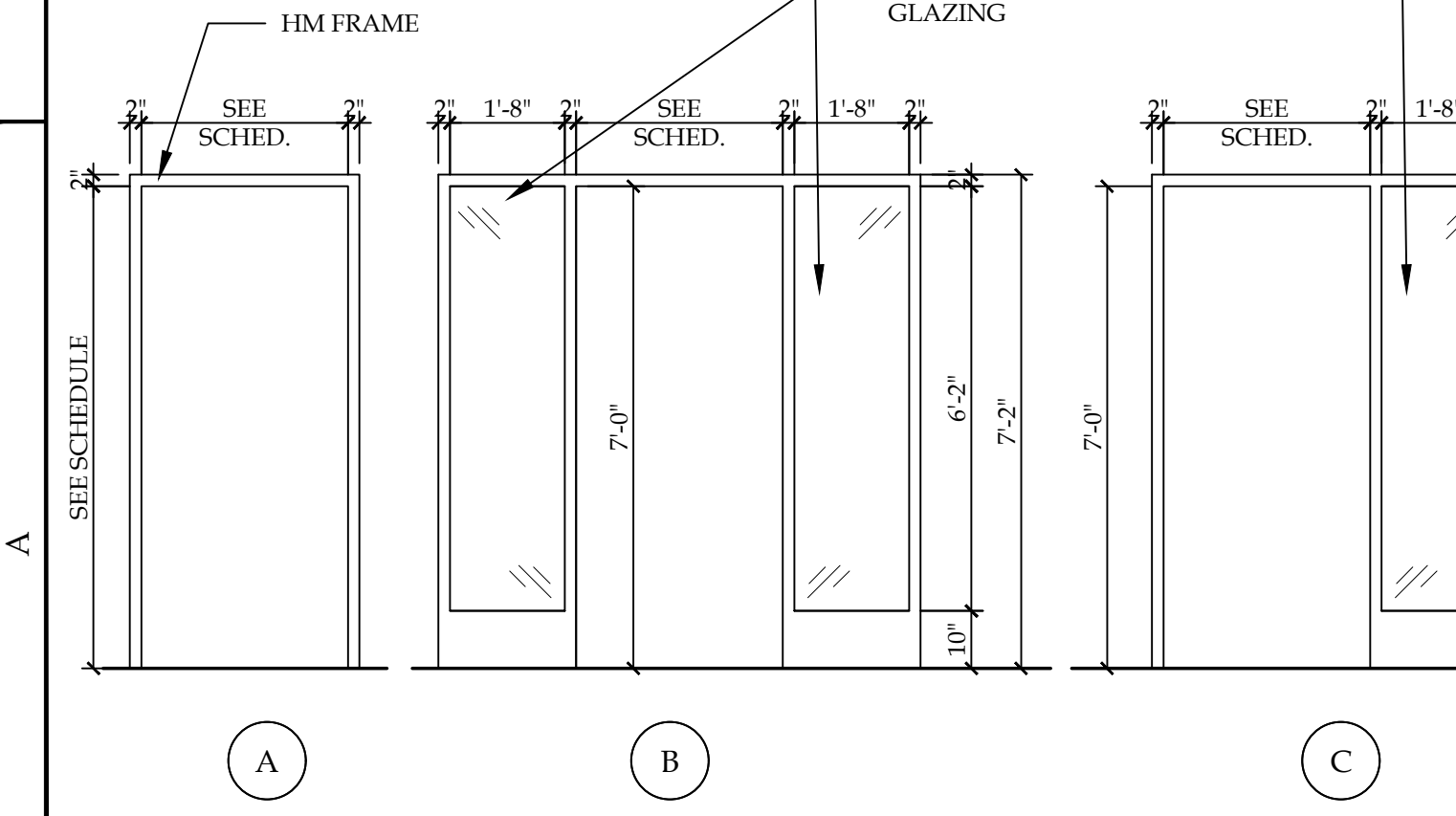
C1 HEAD & JAMB DETAILS
 1" = 1'-0"



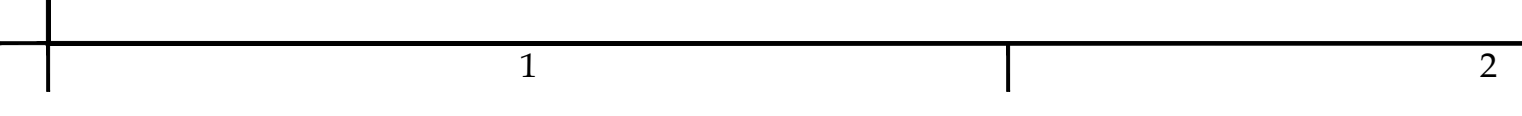
F FLUSH DOOR



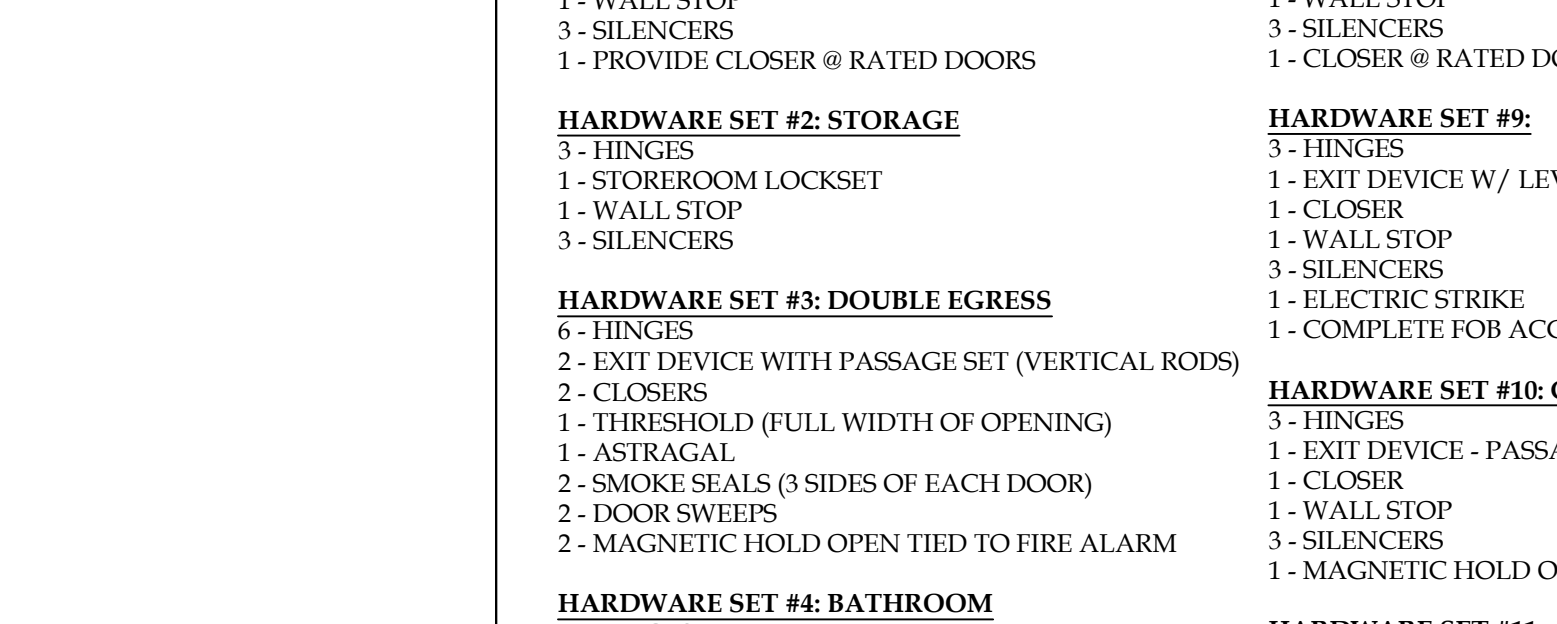
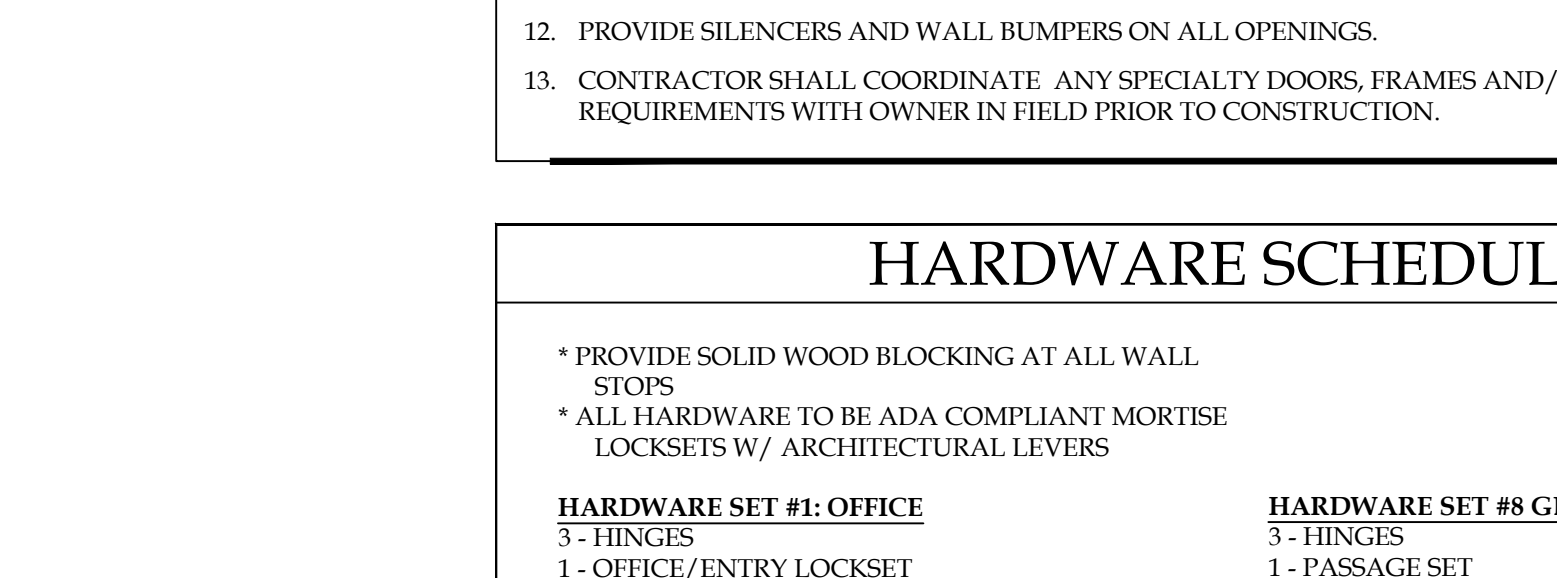
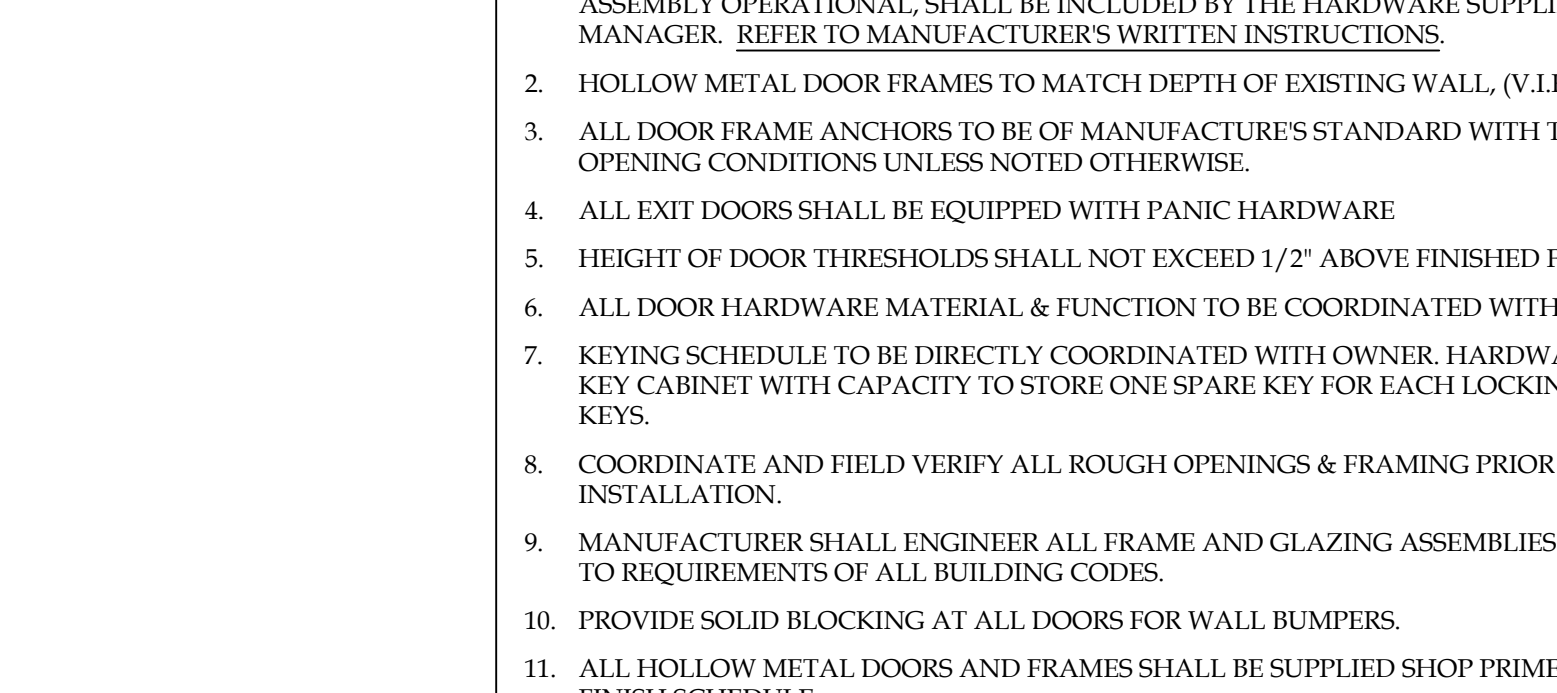
FG FULL GLASS



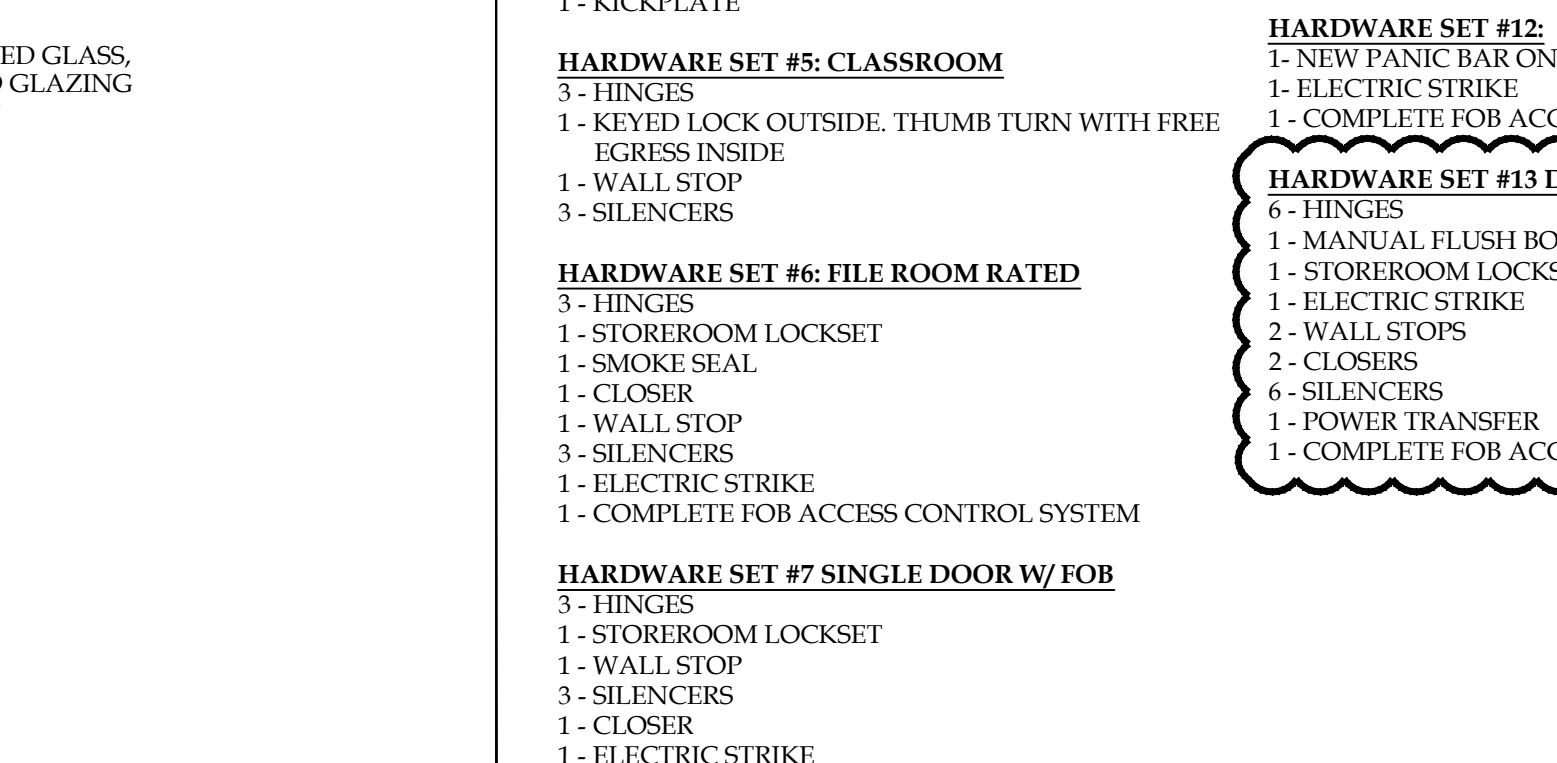
NL NARROW LITE



B1 DOOR TYPES
 3/8" = 1'-0"



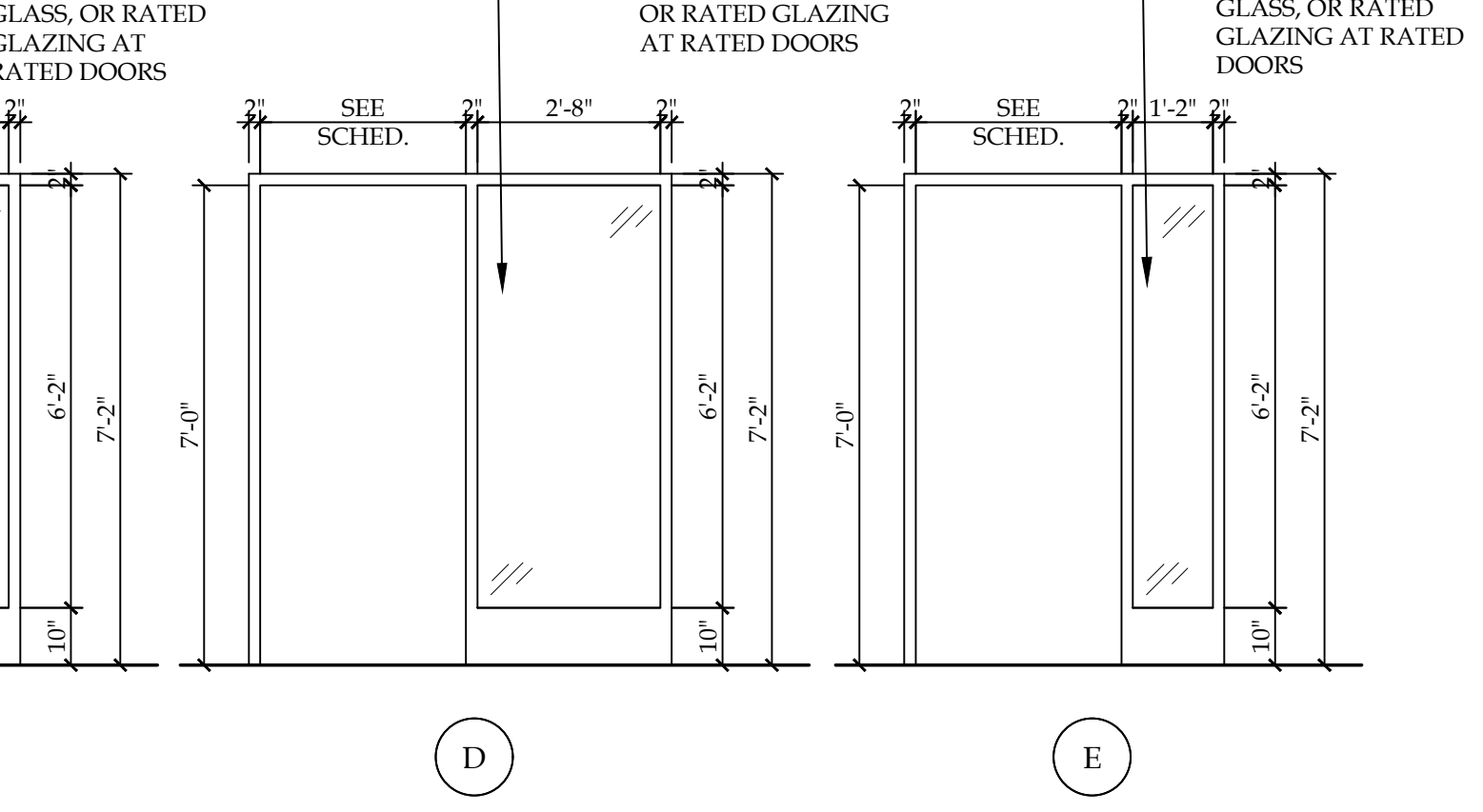
H1 HEAD & JAMB DETAILS
 1" = 1'-0"



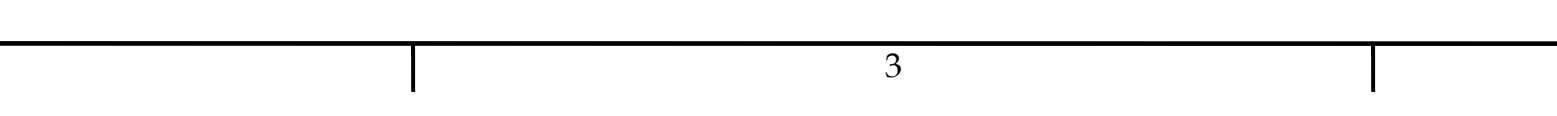
A FRAME TYPES
 1/2\"/>



B FRAME TYPES
 1/2\"/>



C FRAME TYPES
 1/2\"/>



D FRAME TYPES
 1/2\"/>

E FRAME TYPES
 1/2\"/>

NOTICE
 This document, the property of, prepared and issued by the architect, is submitted for the specific project named _____ and the recipient by accepting this document assumes custody and agrees that this document will not be copied or reproduced in part or in whole, and any special features peculiar to this design shall not be incorporated in any other project, unless prior agreement has been obtained in writing. These documents will be returned immediately upon completion of the project or upon the request of the architect.
 This document is the exclusive property of the architect, no rights to ownership are transferable, or shall be lost by the filing of this document with any and all public authorities for the purpose of compliance with Codes and or Ordinances, i.e. Building Permit, etc.



Bryant & Stratton
 110 Broadway
 Buffalo, NY

ISSUE: 2020-04-06: ISSUED FOR BID
 REVISION #2 04.27.2020

SA PROJECT TEAM: PRINCIPAL P.Silvestri
 PROJ. ARCH. S.Hunt DRAFTER _____
 JOB CAPT. _____ INTERIORS N.Catuzza

SEAL:

TITLE:
DOOR SCHEDULE AND DETAILS



1321 MILLERSPORT HWY PH. 716.691.9900
 AMHERST, NY 14221 FAX 716.691.4773

SA JOB #: 19099.02 DATE: 4-6-2020

DRAWING #: A-601

| FINISH SELECTIONS | |
|-----------------------------------|---|
| PAINT (P-X): | |
| (P-1) (TYPICAL) | SHERWIN WILLIAMS REPOSE GRAY SW7015 EGGSHELL |
| (P-2) (ACCENT) | SHERWIN WILLIAMS IN THE NAVY SW9178 EGGSHELL |
| (P-3) (ACCENT) | SHERWIN WILLIAMS SUMMIT GRAY SW7669 EGGSHELL |
| (P-4) (ACCENT) | SHERWIN WILLIAMS WEB GRAY SW7075 EGGSHELL |
| (P-5) (RESTROOMS) | SHERWIN WILLIAMS KNITTING NEEDLES SW7672 EGGSHELL |
| (P-6) (DOOR FRAMES) | SHERWIN WILLIAMS SUMMIT GRAY SW7669 SEMI-GLOSS |
| (P-7) (TREADS) | SHERWIN WILLIAMS TBD SEMI-GLOSS IF TREADS ARE METAL VERIFY IN FIELD |
| (P-8) (ACCENT) | SHERWIN WILLIAMS PEPPER CORN SW7674 EGGSHELL |
| WALL TILE (WT-X): | |
| (WT-1) | BEST TILE ZEBRINO MICHAELANGELO 12"x24" SEE A-400S FOR DETAILS FLEXITILE - |
| (WT-2) (LAB BACKSPLASH) | BEST TILE BRIXTON WHITE GLOSSY 3"x6" INCLUDED IN ALTERNATE 2 |
| CARPET (CPT-X): | |
| (CPT-1) | INTERFACE EVENSONG WINTER SUN EVENING SUN REQUEST INSTALL GUIDE FROM ARCH |
| (CPT-2) | INTERFACE EVENSONG WINTER SUN DAWN SUN REQUEST INSTALL GUIDE FROM ARCH |
| (CPT-3) | INTERFACE EVENSONG WINTER SUN MIDNIGHT SUN REQUEST INSTALL GUIDE FROM ARCH |
| (CPT-4) | PATCRAFT CAMBER TBD STAIR TREADS |
| LUXURY VINYL TILE (LVT-X): | |
| (LVT-1) | INTERFACE STEADY STRIDE WOODGRAINS STERLING |
| (LVT-2) | INTERFACE STEADY STRIDE WOODGRAINS GRAPHITE |
| TILE (T-X): | |
| (T-1) (RESTROOMS) | BEST TILE SLAB SILVER 12"x24" 1/3 BRICK LAY FLEXITILE - TBD |
| RUBBER BASE (RB-X): | |
| (RB-1) | JOHNSONITE 4" COVE BASE CHARCOAL |
| SOLID SURFACE (SS-X): | |
| (SS-1) (LAB COUNTER) | CORIAN SILVER BIRCH |
| (SS-2) (RESTROOM COUNTER) | CORIAN TBD - LOWEST COST GRADE |
| (SS-3) (RECEPTION COUNTER) | MSI QUARTZ TBD |
| PLASTIC LAMINATE (PL-X): | |
| (PL-1) (CABINETS) | WILSONART PHANTOM CHARCOAL |
| (PL-2) (COUNTER) | NEVAMAR EISKAFFE |
| (PL-3) (RESTROOM SHROUD) | WILSONART STEEL MESH |
| (PL-4) (RECEPTION DESK) | WILSONART TBD - PRICE PREMIUM LAMINATE |
| (PL-5) (RECEPTION WORK SURFACE) | NEVAMAR KOPISUSU |

| FINISH SELECTIONS | |
|---|---|
| ACOUSTICAL CEILING TILE (ACT-X): | |
| (ACT-1) | ARMSTRONG CORTEGA 2765 2' X 4' SQUARE WHITE REGULAR |
| WOOD DOOR (WD-X): | |
| (WD-1) | MASONITE ASPIRO PLAIN SLICED BIRCH ROLLED OATS |
| TRANSITION (TS-X): | |
| (TS-1) (GENERAL) | SCHLUTER SYSTEMS RENO-TK SIZE TO BE V.I.F. IN ACCORDANCE WITH MATERIAL(S) THICKNESS CLEAR SATIN ANODIZED ALUMINUM FLOORING MATERIAL CHANGES AS NECESSARY. |
| LOCATION(S): | PLEASE SEE GENERAL NOTES RE: TRANSITIONS. LVT TO CPT DOES NOT NEED TRANSITION |
| NOTE(S): | |
| FIBERGLASS REINFORCED PANEL (FRP-X): | |
| (FRP-1) | CRANE COMPOSITES GLASBOARD WITH SURFASEAL EMBOSSED WHITE CLASS A FIRE RATED STORAGE RM |
| ROLLERSHADES (RS-X): | |
| (RS-1) | HUNTER DOUGLAS E SCREEN 7510 CHARCOAL 5% EXTERIOR WINDOWS AT STUDENT UNION |
| SOELBERG PANEL (SB-X): | |
| (SB-1) | SOELBERG LISCIO FROSTY WHITE RECEPTION DESK ACCENT |
| MISCELLANEOUS (MISC-X): | |
| (MISC-1) (TOILET PARTITIONS) | GENERAL PARTITIONS POWDERCOATED STEEL COLOR TBD ULTIMATE PRIVACY 72 NO SIGHT SYSTEM FLOOR ANCHORED/OVERHEAD BRACED |
| (MISC-2) | DOELLKEN TBD COUNTERTOPS WHERE SPECIFIED |
| (MISC-3) | DOELLKEN TBD CABINETS WHERE SPECIFIED |

| GENERAL NOTES | |
|--|--|
| <ul style="list-style-type: none"> ANY AND ALL FINISH SELECTIONS/ COLORS MUST BE SUBMITTED TO ARCHITECT FOR APPROVAL. ACCOUNTING FOR PROPER LEAD TIME. ANY FINISH THAT IS INSTALLED WITHOUT ARCHITECTS APPROVAL MAY BE REQUIRED TO BE REMOVED AND REPLACED BY THE GENERAL CONTRACTOR. IT IS THE RESPONSIBILITY OF THE CONTRACTOR TO ORDER ALL MATERIALS AT THE APPROPRIATE TIME. ANY FEES INCURRED AS A RESULT OF FINISHES NOT BEING ORDERED ON TIME WILL BE THE RESPONSIBILITY OF THE CONTRACTOR. ANY DISCREPANCIES BETWEEN ARCHITECTURAL ELEVATION(S), PLAN(S), SCHEDULE(S) AND NOTES MUST BE BROUGHT TO ARCHITECTS ATTENTION. ARCHITECT MUST BE CONTACTED AND GIVE APPROVAL TO MOVE FORWARD WITH SPECIFIC DIRECTION PRIOR TO ANTICIPATED ACTION. SEE A-500'S DRAWINGS FOR ALL CABINET HARDWARE. TYPICAL HARDWARE TO BE BERENSON BRUSHED NICKEL TEMPO PULL. ALL INTERIOR PRODUCTS TO MEET/ EXCEED FLAME SPREAD RATING PER CODE. ALL FLOOR FINISHES TO EXTEND BENEATH ALL MILLWORK. ALL ELECTRICAL PANEL COVERS AND/OR MECHANICAL EQUIPMENT AND/OR DUCTING TO BE PAINTED TO MATCH ADJOINING WALL. ANY CEILING HVAC SUPPLY/DIFFUSERS ETC. TO BE PAINTED TO MATCH SURROUNDING CEILING FINISH. ANY QUESTIONS OR CONCERN TO BE BROUGHT TO ARCHITECT'S ATTENTION FOR FINAL DECISION PRIOR TO ORDER/INSTALL BY CONTRACTOR OR OTHER. GYPSUM SOFFIT TO BE EXTEND TO CEILING. HORIZONTAL SURFACE OF ALL SOFFITS TO BE PAINTED TO MATCH ADJOINING WALLS UNLESS OTHERWISE SPECIFIED. | |
| CEILING: | |
| <ul style="list-style-type: none"> ALL GYPSUM BOARD CEILING TO BE PAINTED IN A FLAT WHITE FINISH UNLESS SPECIFIED. ALL EXPOSED MECHANICAL DUCT COVERS SHALL BE PAINTED TO MATCH THE SURROUNDING WALL/ CEILING COLOR. PRIME AS NECESSARY. EXPOSED CEILING, JOISTS, DUCTS, DIFFUSERS, AND ALL OTHER CEILING ELEMENTS TO PAINTED P-6 IN FRONT AREA, ADVISOR AREA, AND LEARNING COMMONS. | |
| WALLS: | |
| <ul style="list-style-type: none"> PROVIDE (1) COAT WALL PRIMER FOLLOWED BY (2) COATS WALL PAINT ON ALL INTERIOR WALL SURFACE UNLESS OTHERWISE NOTED IN SPECIFICATIONS. SEE SPEC FOR DETAILS. WHERE DARK PAINT COLORS ARE APPLIED, USE DEEP GRAY BASE PRIMER TO PREVENT BURNISHING. PROVIDE SPACERS AS NEEDED BEHIND MIRRORING IN RESTROOM TO ACCOUNT FOR TILE THICKNESS. | |
| FLOORS: | |
| <ul style="list-style-type: none"> PROVIDE CORIAN OR EQUAL THRESHOLD AT ALL TOILET ROOM TRANSITIONS UNLESS OTHERWISE SPECIFIED. ARCHITECT TO CHOOSE FROM MANUFACTURER FULL RANGE OF COLORS. NO CHANGES OR SUBSTITUTIONS WILL BE MADE TO THE FOLLOWING FINISHES UNLESS DIRECTED BY THE OWNER OR ARCHITECT. CONTRACTOR TO PROVIDE (TS-1) AT ALL FLOORING MATERIAL CHANGES NEEDING THRESHOLDS. NECESSARY SIZES TO BE DETERMINED BY CONTRACTOR AND V.I.F. BASED ON MATERIAL THICKNESS. | |
| MILLWORK: | |
| <ul style="list-style-type: none"> PROVIDE CLEAR BEAD OF SILICONE OR CLEAR CALK TO SEAL BETWEEN MILLWORK PIECES (IE: COUNTER TOP AND BACKSPLASH) AND MILLWORK AND WALL. (TYPICAL). | |
| WINDOWS: | |
| <ul style="list-style-type: none"> ALL GLAZING FACING EXTERIOR TO RECEIVE RS-1. | |
| DOORS: | |
| <ul style="list-style-type: none"> ALL HOLLOW METAL DOOR FRAMES TO BE PAINTED WITH P-6. | |
| OUTLETS: | |
| <ul style="list-style-type: none"> ALL OUTLET SWITCHES AND COVERS TO BE WHITE. | |
| SIGNAGE: | |
| <ul style="list-style-type: none"> SIGNAGE LOCATIONS WILL NEED TO BE PROVIDED AND INSTALLED BY CONTRACTOR. TO BE SELECTED AND APPROVED BY ARCHITECT AND CLIENT PRIOR TO MANUFACTURER/PURCHASE TO BE PROVIDED BY TAKEFORM. | |

| ROOM FINISH LEGEND | |
|------------------------------|-----------------------|
| FLOORS | MISCELLANEOUS |
| CPT = CARPET | PL = PLASTIC LAMINATE |
| T = TILE | SS = SOLID SURFACE |
| LVT = LUXURY VINYL TILE | TS = TRANSITION STRIP |
| BASE | MISC = MISCELLANEOUS |
| RB = RUBBER BASE | RS = ROLLER SHADES |
| WALLS | CG = CORNER GUARD |
| P = PAINT | SB = SOELBERG PANEL |
| WT = WALL TILE | MATERIALS |
| FRP = FIBER REINFORCED PANEL | P.B. = PARTICLE BOARD |
| CEILING | GYP. = GYPSUM BOARD |
| ACT = ACOUSTIC CEILING TILE | |
| GYP = GYPSUM BOARD | |
| DOORS | |
| WD = WOOD DOOR | |

NOTICE

This document, the property of, prepared and issued by the architect, is submitted for the specific project named _____ and the recipient by accepting this document assumes custody and agrees that this document will not be copied or reproduced in part or in whole, and any special features peculiar to this design shall not be incorporated in any other project, unless prior agreement has been obtained in writing. These documents will be returned immediately upon completion of the project or upon the request of the architect.

This document is the exclusive property of the architect, no rights to ownership are transferable, or shall be lost by the filing of this document with any and all public authorities for the purpose of compliance with Codes and or Ordinances, i.e. Building Permit, etc.



Bryant & Stratton
110 Broadway
Buffalo, NY

ISSUE:
2020-04-06: ISSUED FOR BID

REVISION #2 04.27.2020

SA PROJECT TEAM: PRINCIPAL P.Silvestri
PROJ. ARCH. S.Hunt DRAFTER _____
JOB CAPT. _____ INTERIORS N.Catuzza

SEAL:

TITLE:
FINISH SCHEDULE & GENERAL NOTES



SA JOB #: 19099.02 DATE: 4-6-2020

DRAWING #: A-603

FIRST FLOOR ROOM FINISH SCHEDULE

| ROOM NUMBER | ROOM NAME | BASE | FLOOR | WALLS | CEILING | MILLWORK | | REMARKS |
|-------------|-------------|-------|-------------------|-----------------|---------|----------------|-----------------------|---------|
| | | | | | | CABINET/SHROUD | COUNTERTOP/BACKSPLASH | |
| 101 | COMMON AREA | EXIST | EXIST/CPT-2/CPT-4 | P-1/P-2/P-6/P-7 | EXIST | | | 6 |

| ROOM NUMBER | ROOM NAME | BASE | FLOOR | WALLS | CEILING | MILLWORK | | REMARKS |
|-------------|--------------------------|-------|---------------------|---------------|---------|----------------|-----------------------|---------|
| | | | | | | CABINET/SHROUD | COUNTERTOP/BACKSPLASH | |
| 201 | ELEV. LOBBY | RB-1 | CPT-2 | P-1 | EXIST | | | |
| 202 | ELEV. | EXIST | EXIST | EXIST | EXIST | | | |
| 203 | RECEPTION | RB-1 | LVT-1 | P-1/P-2 | ACT-1 | PL-4/SB-1 | PL-5/SS-3 | 1 |
| 204 | STUDENT LOUNGE | RB-1 | LVT-1, CPT-1 | P-1 | ACT-1 | PL-1 | PL-2 | 1 |
| 205 | INTERVIEW ROOM | RB-1 | CPT-2 | P-1, P-2 | ACT-1 | | | |
| 206 | INTERVIEW ROOM | RB-1 | CPT-2 | P-1, P-2 | ACT-1 | | | |
| 207 | CORRIDOR | RB-1 | LVT-1, LVT-2 | P-1, P-2, P-4 | ACT-1 | | | |
| 208 | CONFERENCE ROOM | RB-1 | CPT-1, CPT-2 | P-1, P-3 | ACT-1 | | | |
| 209 | FINANCIAL ADVISOR AREA | RB-1 | CPT-1, CPT-2, CPT-3 | P-1, P-8 | ACT-1 | | | |
| 210 | FA MANAGER | RB-1 | CPT-2 | P-1, P-3 | ACT-1 | | | |
| 211 | BUSINESS OFFICE DIRECTOR | RB-1 | CPT-2 | P-1, P-3 | ACT-1 | | | |
| 212 | ANALYSIS | RB-1 | CPT-2 | P-1, P-3 | ACT-1 | | | |
| 213 | BUSINESS OFFICE MGR | RB-1 | CPT-2 | P-1, P-3 | ACT-1 | | | |
| 214 | STORAGE | RB-1 | LVT-1 | P-1 | ACT-1 | | | |
| 215 | CORRIDOR | RB-1 | CPT-1, CPT-2, CPT-3 | P-1 | ACT-1 | | | |
| 216 | IT CORD | RB-1 | CPT-2 | P-1 | ACT-1 | | | |
| 217 | BOOK DIST. RM | RB-1 | CPT-2 | P-1 | ACT-1 | | | |
| 218 | ADMISSIONS AREA | RB-1 | CPT-1, CPT-2, CPT-3 | P-1, P-8 | ACT-1 | | | |
| 219 | FIREPROOF STORAGE | RB-1 | CPT-2 | P-1 | ACT-1 | | | |
| 220 | CD | RB-1 | CPT-2 | P-1, P-3 | ACT-1 | | | |
| 221 | ADMISSIONS DIRECTOR | RB-1 | CPT-2 | P-1, P-3 | ACT-1 | | | |
| 222 | BREAK RM | RB-1 | LVT-1 | P-1, P-2 | ACT-1 | PL-1 | PL-2 | |
| 223 | REGISTRAR | RB-1 | CPT-2 | P-1, P-3 | ACT-1 | | | |
| 224 | ASSOC DEAN | RB-1 | CPT-2 | P-1, P-3 | ACT-1 | | | |
| 225 | DEAN OF INSTRUCTION | RB-1 | CPT-2 | P-1, P-3 | ACT-1 | | | |
| 226 | STORAGE | RB-1 | LVT-1 | P-1 | ACT-1 | | | |
| 227 | ADVISOR AREA | RB-1 | CPT-1/CPT-2/CPT-3 | P-1, P-8 | ACT-1 | | | |
| 228 | SHARED WAITING | RB-1 | CPT-1/CPT-2/CPT-3 | P-1 | ACT-1 | PL-1 | PL-2 | |
| 229 | CAREER SERVICES | RB-1 | CPT-2 | P-1, P-8 | ACT-1 | | | |
| 230 | CS OFFICE | RB-1 | CPT-2 | P-1, P-3 | ACT-1 | | | |
| 231 | WELLNESS | RB-1 | CPT-2 | P-1 | ACT-1 | | | |
| 232 | SERVER RM | RB-1 | LVT-1 | P-1 | ACT-1 | | | |
| 233 | CORRIDOR | RB-1 | LVT-1, LVT-2 | P-1, P-4 | ACT-1 | | | |
| 234 | LAUNDRY/STOR. | RB-1 | LVT-1 | P-1 | ACT-1 | | | |
| 235 | WOMEN'S | T-1 | T-1 | WT-1/P-5 | ACT-1 | PL-3 | SS-2 | 2 |
| 236 | JAN. | RB-1 | LVT-1 | P-1/FRP-1 | ACT-1 | | | 3 |
| 237 | MEN'S | T-1 | T-1 | WT-1/P-5 | ACT-1 | PL-3 | SS-2 | 2 |
| 238 | EX MECH | RB-1 | LVT-1 | P-1 | ACT-1 | | | |
| 239 | CORRIDOR | RB-1 | LVT-1, LVT-2 | P-1, P-4 | ACT-1 | PL-1 | PL-2 | |
| 240 | STAIR | RB-1 | CPT-2 | P-1 | EXIST | | | 6 |
| 241 | LAB | RB-1 | LVT-1 | P-1, P-2 | ACT-1 | PL-1 | SS-1/PL-2 | 5 |
| 242 | CORRIDOR | RB-1 | LVT-1, LVT-2 | P-1, P-4 | ACT-1 | | | |
| 243 | LAB | RB-1 | LVT-1 | P-1/P-2 | ACT-1 | PL-1 | SS-1/PL-2 | 5 |
| 244 | LAB STOR. | RB-1 | LVT-1 | P-1 | ACT-1 | | | |
| 245 | LIBRARY | RB-1 | CPT-1, CPT-2 | P-1, P-2 | ACT-1 | | | |
| 246 | STOR. | RB-1 | CPT-2 | P-1 | ACT-1 | | | |
| 247 | TESTING | RB-1 | CPT-2 | P-1, P-2 | ACT-1 | | | |
| 248 | TESTING | RB-1 | CPT-2 | P-1, P-2 | ACT-1 | | | |
| 249 | TESTING | RB-1 | CPT-2 | P-1, P-2 | ACT-1 | | | |

| | | | | | | | | |
|-----|------------------------|------|---------------------|------------|-------|-----------|------|-------|
| 250 | TESTING | RB-1 | CPT-2 | P-1, P-2 | ACT-1 | | | |
| 251 | LEARNING CENTER | RB-1 | CPT-2 | P-1, P-2 | ACT-1 | PL-1/PL-3 | SS-1 | |
| 252 | LEARNING CENTER OFFICE | RB-1 | CPT-2 | P-1, P-3 | ACT-1 | | | |
| 253 | PROGRAM DIRECTORS | RB-1 | CPT-2 | P-1, P-2 | ACT-1 | PL-1/PL-3 | SS-1 | |
| 254 | FACULTY | RB-1 | CPT-1, CPT-2 | P-1, P-8 | ACT-1 | | | |
| 255 | STORAGE | RB-1 | CPT-1 | P-1 | ACT-1 | | | |
| 256 | CLASSROOM | RB-1 | CPT-1, CPT-2 | P-1/P-2 | ACT-1 | | | |
| 257 | CLASSROOM | RB-1 | CPT-1, CPT-2 | P-1/P-2 | ACT-1 | | | |
| 258 | CLASSROOM | RB-1 | CPT-1, CPT-2 | P-1/P-2 | ACT-1 | | | |
| 259 | NOT USED | | | | | | | |
| 260 | CLASSROOM | RB-1 | CPT-1, CPT-2 | P-1/P-2 | ACT-1 | | | |
| 261 | ATHLETIC OFFICE | RB-1 | CPT-2 | P-1/P-3 | ACT-1 | | | |
| 262 | ESPORTS | RB-1 | CPT-1, CPT-2 | P-1/P-2 | ACT-1 | | | |
| 263 | VETERAN'S LOUNGE | RB-1 | CPT-2 | P-1 | ACT-1 | | | |
| 264 | MICRO CLASS | RB-1 | CPT-1/CPT-2 | P-1/P-2 | ACT-1 | | | |
| 265 | LECTURE/CLUB RM. | RB-1 | CPT-2 | P-1/P-2 | ACT-1 | | | |
| 266 | CLASSROOM | RB-1 | CPT-2 | P-1/P-2 | ACT-1 | | | |
| 267 | CLASSROOM | RB-1 | CPT-1, CPT-2, CPT-3 | P-1/P-2 | ACT-1 | | | |
| 268 | CLASSROOM | RB-1 | CPT-1, CPT-2, CPT-3 | P-1/P-2 | ACT-1 | | | |
| 269 | CLASSROOM | RB-1 | CPT-1, CPT-2, CPT-3 | P-1/P-2 | ACT-1 | | | |
| 270 | ATHLETIC OFFICE | RB-1 | CPT-2 | P-1/P-2 | ACT-1 | | | |
| 271 | ATHLETIC MEETING AREA | RB-1 | CPT-2 | P-1/P-2 | ACT-1 | | | |
| 272 | CORRIDOR | RB-1 | CPT-2 | P-1 | ACT-1 | | | |
| 273 | TENANT | - | - | - | - | | | |
| 274 | WOMEN'S | - | T-1 | P-5/ WT-1 | ACT-1 | PL-3 | SS-2 | 2,4,6 |
| 275 | MEN'S | - | T-1 | P-5/ WT-1 | ACT-1 | PL-3 | SS-2 | 2,4,6 |
| 276 | STAIR | RB-1 | CPT-2 | P-1 | EXIST | | | 6 |
| 277 | JAN. | RB-1 | LVT-1 | P-1, FRP-1 | ACT-1 | | | 3 |
| 278 | ELEC. ROOM | RB-1 | LVT-1 | P-1 | ACT-1 | | | |

ROOM FINISH LEGEND

| | |
|------------------------------|-----------------------|
| FLOORS | MISCELLANEOUS |
| CPT = CARPET | PL = PLASTIC LAMINATE |
| T = TILE | SS = SOLID SURFACE |
| LVT = LUXURY VINYL TILE | TS = TRANSITION STRIP |
| BASE | MISC = MISCELLANEOUS |
| RB = RUBBER BASE | RS = ROLLER SHADES |
| WALLS | CG = CORNER GUARD |
| P = PAINT | SB = SOELBERG PANEL |
| WT = WALL TILE | MATERIALS |
| FRP = FIBER REINFORCED PANEL | P.B. = PARTICLE BOARD |
| CEILING | GYP. = GYPSUM BOARD |
| ACT = ACOUSTIC CEILING TILE | |
| GYP = GYPSUM BOARD | |
| DOORS | |
| WD = WOOD DOOR | |

- REMARKS
- REFER TO REFLECTED CEILING PLAN FOR EXACT DETAILS (MATERIALS, HEIGHTS, SIZES, ETC...) FOR CEILING LAYOUT.
 - WALL TILE IN RESTROOMS WILL ACT AS WALL BASE. REFER TO A-400S FOR EXACT TILE LAYOUT AND HEIGHTS.
 - FRP-1 TO BE INSTALLED AT 4'-6" A.F.F. P-1 TO BE PAINTED ABOVE FRP.
 - ALTERNATE 1 IS SPECIFIED FOR THIS SPACE. SEE FINISH PLAN FOR EXTENT OF WORK.
 - ALTERNATE 2 IS SPECIFIED FOR THIS SPACE. SEE FINISH PLAN FOR EXTENT OF WORK.
 - ALTERNATE 3 IS SPECIFIED FOR THIS SPACE. SEE FINISH PLAN FOR EXTENT OF WORK.

- ALTERNATES
- COMMON AREA RESTROOMS TO BE REMODELED, SEE A-400S AND A-600S FOR FINISH SELECTIONS.
 - WT-2 BACKSPLASH AT LABS.
 - LANDLORD WORK - NEW CARPET AT EXISTING CARPET INLAY IN COMMON AREA LOBBY ON 1ST FLOOR. NEW PAINT ON ALL WALLS AND SOFFITS. WALLS TO BE PAINTED P-1 WITH EXCLUSION OF ELVIA FOR SURROUND. NEW CARPET AT STAIR TREADS, NEW PAINT ON EXISTING TREADS, AND RAILINGS. SECOND FLOOR LANDING TO RECEIVE NEW CARPET INSTALLED IN DIAGONAL PATTERN AND NEW PAINT ON RAILINGS. RESTROOMS IN LANDLORD WORK INCLUDE NEW TILE AND MILLWORK FINISHES. CORRIDOR 272 TO RECEIVE NEW CARPET AND PAINT. STAIR 240 & STAIR 276 TO RECEIVE NEW CARPET AT LANDINGS AND PAINT.

NOTICE
 This document, the property of, prepared and issued by the architect, is submitted for the specific project named _____ and the recipient by accepting this document assumes custody and agrees that this document will not be copied or reproduced in part or in whole, and any special features peculiar to this design shall not be incorporated in any other project, unless prior agreement has been obtained in writing. These documents will be returned immediately upon completion of the project or upon the request of the architect.
 This document is the exclusive property of the architect, no rights to ownership are transferable, or shall be lost by the filing of this document with any and all public authorities for the purpose of compliance with Codes and or Ordinances, i.e. Building Permit, etc.



Bryant & Stratton
 110 Broadway
 Buffalo, NY

ISSUE:
 2020-04-06: ISSUED FOR BID
 REVISION #2 04.27.2020

SA PROJECT TEAM: PRINCIPAL P.Silvestri
 PROJ. ARCH. S.Hunt DRAFTER _____
 JOB CAPT. _____ INTERIORS N.Catuzza

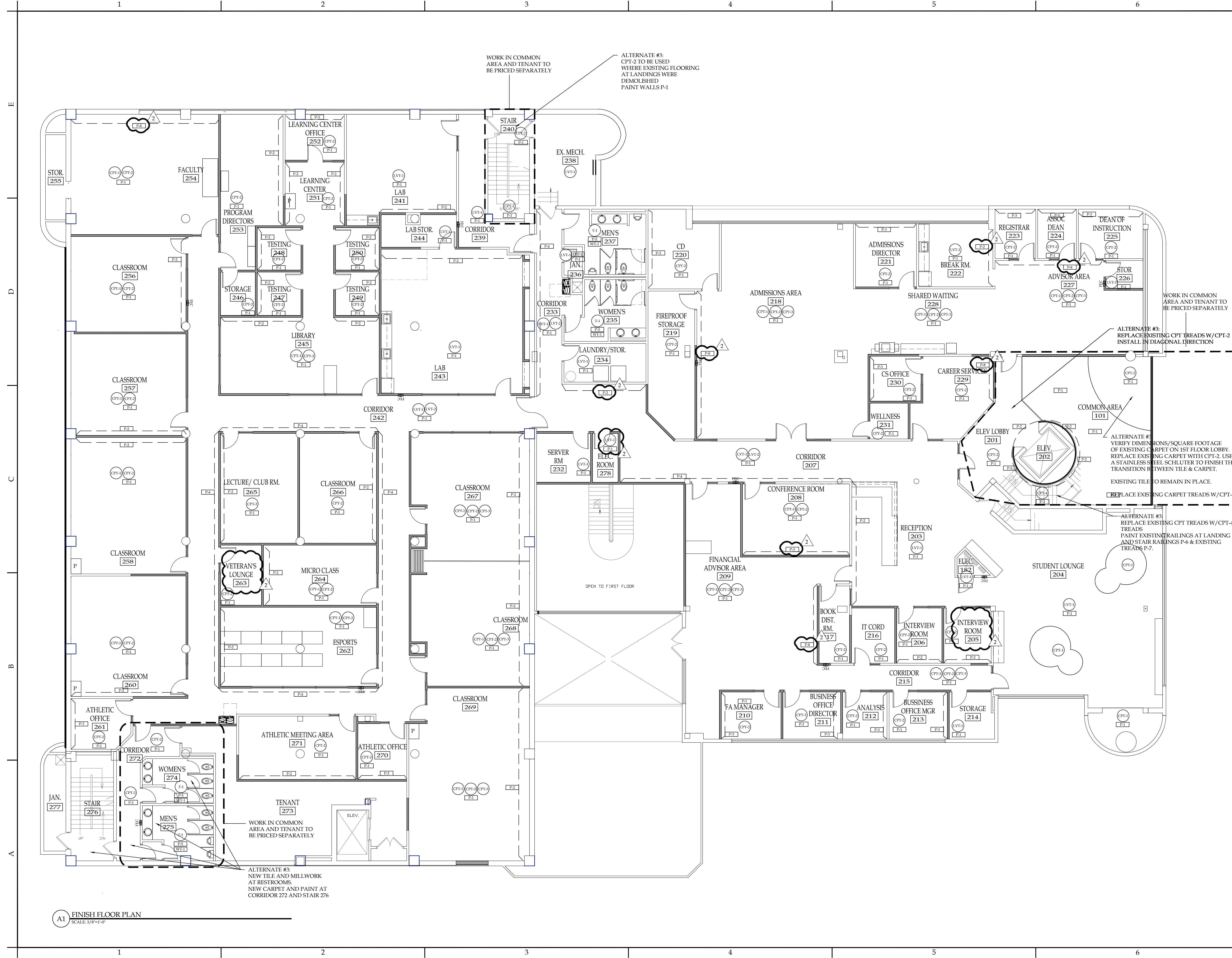
SEAL:

TITLE:
FINISH LEGEND



SA JOB #: 19099.02 DATE: 4-6-2020

DRAWING #: **A-604**



NOTICE
 This document, the property of, prepared and issued by the architect, is submitted for the specific project named _____ and the recipient by accepting this document assumes custody and agrees that this document will not be copied or reproduced in part or in whole, and any special features peculiar to this design shall not be incorporated in any other project, unless prior agreement has been obtained in writing. These documents will be returned immediately upon completion of the project or upon the request of the architect.
 This document is the exclusive property of the architect, no rights to ownership are transferable, or shall be lost by the filing of this document with any and all public authorities for the purpose of compliance with Codes and or Ordinances, i.e. Building Permit, etc.



Bryant & Stratton
 110 Broadway
 Buffalo, NY

ISSUE:
 2020-04-06: ISSUED FOR BID

REVISION #2 04.27.2020

SA PROJECT TEAM: PRINCIPAL P.Silvestri
 PROJ. ARCH. S.Hunt DRAFTER _____
 JOB CAPT. _____ INTERIORS N.Catuzza

SEAL:

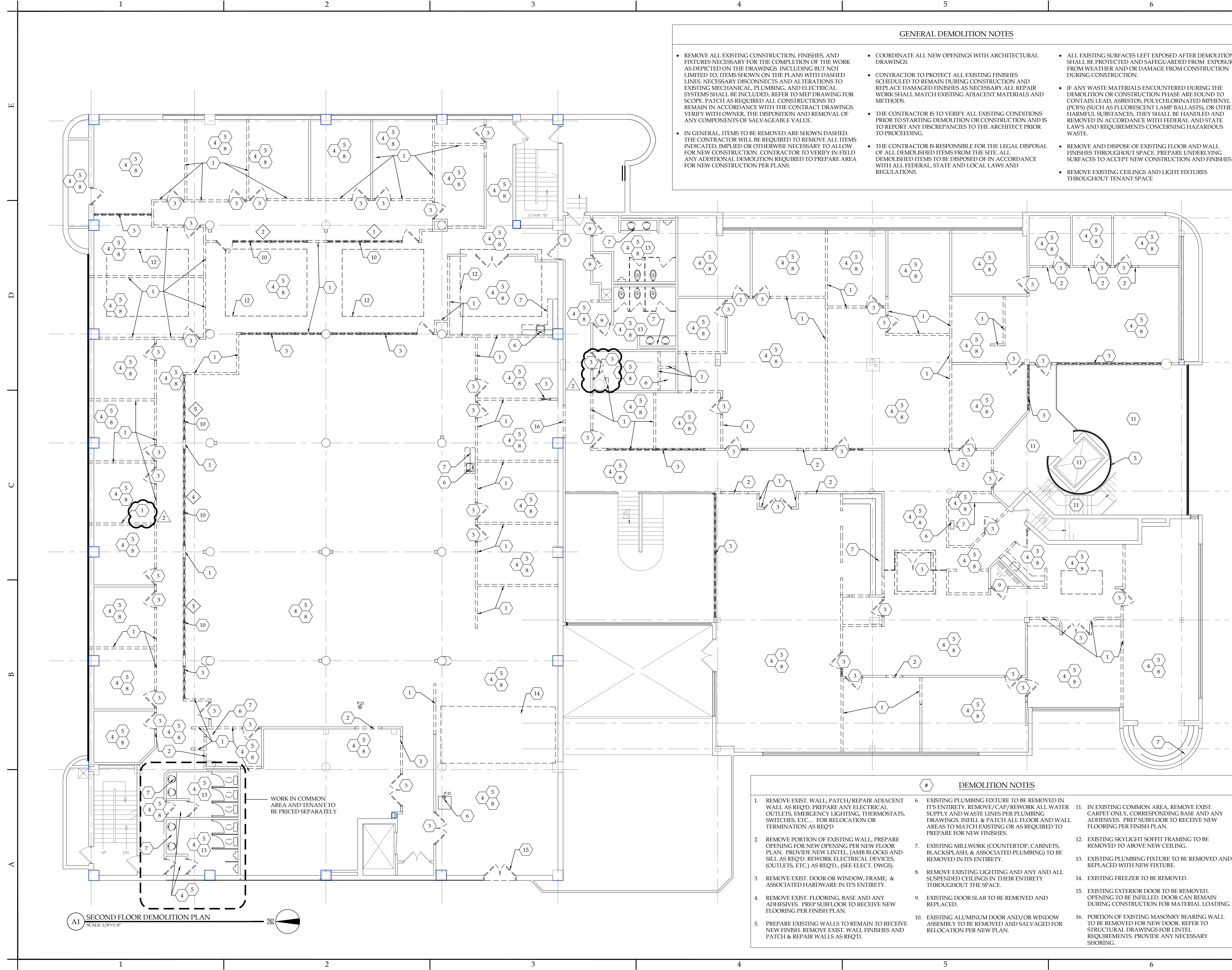
TITLE:
FINISH FLOOR PLAN

1321 MILLERSPORT HWY PH. 716.691.0900
 AMHERST, NY 14221 FAX 716.691.4773

SA JOB #: 19099.02 DATE: 4-6-2020

DRAWING #: A-605

A1 FINISH FLOOR PLAN
 SCALE: 3/8"=1'-0"



GENERAL DEMOLITION NOTES

- REMOVE ALL EXISTING CONSTRUCTION, FINISHES, AND FIXTURES NECESSARY FOR THE COMPLETION OF THE WORK AS DEPICTED ON THE DRAWINGS, INCLUDING BUT NOT LIMITED TO, ITEMS SHOWN ON THE PLANS WITH DASHED LINES. NECESSARY DISCONNECTS AND ALTERATIONS TO EXISTING MECHANICAL, PLUMBING, AND ELECTRICAL SYSTEMS SHALL BE INCLUDED. REFER TO MEP DRAWING FOR SCOPE. PATCH AS REQUIRED. ALL CONSTRUCTIONS TO REMAIN IN ACCORDANCE WITH THE CONTRACT DRAWINGS. VERIFY WITH OWNER THE DISPOSITION AND REMOVAL OF ANY COMPONENTS OF SALVAGEABLE VALUE.
- IN GENERAL, ITEMS TO BE REMOVED ARE SHOWN DASHED. THE CONTRACTOR WILL BE REQUIRED TO REMOVE ALL ITEMS INDICATED, IMPLIED OR OTHERWISE NECESSARY TO ALLOW FOR NEW CONSTRUCTION. CONTRACTOR TO VERIFY IN FIELD ANY ADDITIONAL DEMOLITION REQUIRED TO PREPARE AREA FOR NEW CONSTRUCTION PER PLANS.
- COORDINATE ALL NEW OPENINGS WITH ARCHITECTURAL DRAWINGS.
- CONTRACTOR TO PROTECT ALL EXISTING FINISHES SCHEDULED TO REMAIN DURING CONSTRUCTION AND REPLACE DAMAGED FINISHES AS NECESSARY. ALL REPAIR WORK SHALL MATCH EXISTING ADJACENT MATERIALS AND METHODS.
- THE CONTRACTOR IS TO VERIFY ALL EXISTING CONDITIONS PRIOR TO STARTING DEMOLITION OR CONSTRUCTION AND IS TO REPORT ANY DISCREPANCIES TO THE ARCHITECT PRIOR TO PROCEEDING.
- THE CONTRACTOR IS RESPONSIBLE FOR THE LEGAL DISPOSAL OF ALL DEMOLISHED ITEMS FROM THE SITE. ALL DEMOLISHED ITEMS TO BE DISPOSED OF IN ACCORDANCE WITH ALL FEDERAL, STATE AND LOCAL LAWS AND REGULATIONS.
- ALL EXISTING SURFACES LEFT EXPOSED AFTER DEMOLITION SHALL BE PROTECTED AND SAFEGUARDED FROM EXPOSURE FROM WEATHER AND OR DAMAGE FROM CONSTRUCTION DURING CONSTRUCTION.
- IF ANY WASTE MATERIALS ENCOUNTERED DURING THE DEMOLITION OR CONSTRUCTION PHASE ARE FOUND TO CONTAIN LEAD, ASBESTOS, POLYCHLORINATED BIPHENYL (PCBS) (SUCH AS FLUORESCENT LAMP BALLASTS), OR OTHER HARMFUL SUBSTANCES, THEY SHALL BE HANDLED AND REMOVED IN ACCORDANCE WITH FEDERAL AND STATE LAW'S AND REQUIREMENTS CONCERNING HAZARDOUS WASTE.
- REMOVE AND DISPOSE OF EXISTING FLOOR AND WALL FINISHES THROUGHOUT SPACE. PREPARE UNDERLYING SURFACES TO ACCEPT NEW CONSTRUCTION AND FINISHES.
- REMOVE EXISTING CEILINGS AND LIGHT FIXTURES THROUGHOUT TENANT SPACE.

NOTICE
 This document, the property of, prepared and issued by the architect, is submitted for the specific project named _____ and the recipient by accepting this document assumes custody and agrees that this document will not be copied or reproduced in part or in whole, and any special features peculiar to this design shall not be incorporated in any other project, unless prior agreement has been obtained in writing. These documents will be returned immediately upon completion of the project or upon the request of the architect.
 This document is the exclusive property of the architect, no rights to ownership are transferable, or shall be lost by the filing of this document with any and all public authorities for the purpose of compliance with Codes and or Ordinances, i.e. Building Permit, etc.



Bryant & Stratton
 110 Broadway
 Buffalo, NY

ISSUE:
 2020-04-06: ISSUED FOR BID
 2 REVISION #2 04.27.2020

SA PROJECT TEAM: PRINCIPAL P.Silvestri
 PROJ. ARCH. S.Hunt DRAFTER _____
 JOB CAPT. _____ INTERIORS N.Catuzza

SEAL:

TITLE:
**SECOND FLOOR
 DEMOLITION
 PLAN**



SA JOB #: 19099.02 DATE: 4-6-2020

DRAWING #: **AD-101**

DEMOLITION NOTES

1. REMOVE EXIST. WALL; PATCH/REPAIR ADJACENT WALL AS REQ'D. REMOVE/CAP/REWORK ALL WATER SUPPLY AND WASTE LINES PER PLUMBING DRAWINGS. INFILL & PATCH ALL FLOOR AND WALL AREAS TO MATCH EXISTING OR AS REQUIRED TO PREPARE FOR NEW FINISHES.
2. REMOVE PORTION OF EXISTING WALL. PREPARE OPENING FOR NEW OPENING PER NEW FLOOR PLAN. PROVIDE NEW LINTEL, JAMB BLOCKS AND SILL AS REQ'D. REWORK ELECTRICAL DEVICES, (OUTLETS, ETC.) AS REQ'D. (SEE ELECT. DWGS).
3. REMOVE EXIST. DOOR OR WINDOW, FRAME, & ASSOCIATED HARDWARE IN ITS ENTIRETY.
4. REMOVE EXIST. FLOORING, BASE AND ANY ADHESIVES. PREP SUBFLOOR TO RECEIVE NEW FLOORING PER FINISH PLAN.
5. PREPARE EXISTING WALLS TO REMAIN TO RECEIVE NEW FINISH. REMOVE EXIST. WALL FINISHES AND PATCH & REPAIR WALLS AS REQ'D.
6. EXISTING PLUMBING FIXTURE TO BE REMOVED IN ITS ENTIRETY. REMOVE/CAP/REWORK ALL WATER SUPPLY AND WASTE LINES PER PLUMBING DRAWINGS. INFILL & PATCH ALL FLOOR AND WALL AREAS TO MATCH EXISTING OR AS REQUIRED TO PREPARE FOR NEW FINISHES.
7. EXISTING MILLWORK (COUNTERTOP, CABINETS, BLACKSPASH, & ASSOCIATED PLUMBING) TO BE REMOVED IN ITS ENTIRETY.
8. REMOVE EXISTING LIGHTING AND ANY AND ALL SUSPENDED CEILINGS IN THEIR ENTIRETY THROUGHOUT THE SPACE.
9. EXISTING DOOR SLAB TO BE REMOVED AND REPLACED.
10. EXISTING ALUMINUM DOOR AND/OR WINDOW ASSEMBLY TO BE REMOVED AND SALVAGED FOR RELOCATION PER NEW PLAN.
11. IN EXISTING COMMON AREA, REMOVE EXIST. CARPET ONLY. CORRESPONDING BASE AND ANY ADHESIVES. PREP SUBFLOOR TO RECEIVE NEW FLOORING PER FINISH PLAN.
12. EXISTING SKYLIGHT SOFFIT FRAMING TO BE REMOVED TO ABOVE NEW CEILING.
13. EXISTING PLUMBING FIXTURE TO BE REMOVED AND REPLACED WITH NEW FIXTURE.
14. EXISTING FREEZER TO BE REMOVED.
15. EXISTING EXTERIOR DOOR TO BE REMOVED, OPENING TO BE INFILLED. DOOR CAN REMAIN DURING CONSTRUCTION FOR MATERIAL LOADING.
16. PORTION OF EXISTING MASONRY BEARING WALL TO BE REMOVED FOR NEW DOOR. REFER TO STRUCTURAL DRAWINGS FOR LINTEL REQUIREMENTS. PROVIDE ANY NECESSARY SHORING.

A1 SECOND FLOOR DEMOLITION PLAN
 SCALE: 1/8"=1'-0"