

LEGEND	
TYP.	TYPICAL
U/F	UNDER FLOOR
RPZ	REDUCED PRESSURE ZONE ASSEMBLIES
MC	MECHANICAL CONTRACTOR
GC	GENERAL CONTRACTOR
CONT.	CONTINUATION
N/A	NOT APPLICABLE
PC	PLUMBING CONTRACTOR
RM.	ROOM
BLDG.	BUILDING
KEC	KITCHEN EQUIPMENT CONTRACTOR
HVAC	HEATING, VENTILATING, AIR CONDITIONING
F/#	FOR/NUMBER OF HEADS

SPRINKLER HEADS SHALL BE QUICK RESPONSE TYPE AS REQUIRED BY CODE. CONTRACTOR TO CONSULT WITH SPECIFICATIONS REGARDING EXPOSED SPRINKLER HEAD FINISH BEFORE ORDERING.

SCHEDULE OF SPRINKLER HEADS	
SYMBOL	DESCRIPTION
⊗	Pendant Semi-recessed head with white finish and upright sprinkler head, 1/2" orifice, 155°F. <i>UL Listed</i> and FM approved. "Rooster Style"
⊗	Pendant fully-recessed anti-corrosion head with finish cover plate. 1/2" orifice, 155°F - Steam and Sauna rooms head temperature shall be a minimum of 285°F. <i>UL Listed</i> and FM approved. Reliable Sprinkler F1FR-56 series or Viking VK302 with ENT Coating.
⊗	Dry Pendant Semi-recessed head with white finish and upright sprinkler head, 1/2" orifice, 155°F. <i>UL Listed</i> and FM approved. "Rooster Style"
○	Upright brass head, 1/2" orifice, 210°F. <i>UL Listed</i> and FM approved.
●	Dry-Upright brass head, 1/2" orifice, 210°F. <i>UL Listed</i> and FM approved.
⊗	Full-(concealed) head with white finish, 1/2" orifice, 165°F. <i>UL Listed</i> and FM approved.
△	Sidewall type head with white finish, 1/2" orifice, 155°F. <i>UL Listed</i> and FM approved.
▲	Dry Sidewall type head with white finish and white escutchen. 1/2" orifice, 155°F. <i>UL Listed</i> and FM approved.

FIRE PROTECTION SYSTEMS SPECIFICATIONS


- The contractor shall be responsible for a complete turn key installation using Underwriter Laboratories UL listed products including design, obtaining approvals and coordination with other trades. Install to meet NFPA 13, NFPA 72, NFPA 101, and the local Authority Having Jurisdiction requirements.
- Sprinkler heads, mains, runouts, tailbacks, sprigs etc. shall be provided as follows:
 - The fire protection contractor shall provide services for this project on a design build basis. Provide all required materials and designs for a 100% complete functional and code compliant installation. Provide piping drawings, schematics, material specifications etc. with flow calculations to the local jurisdiction having authority for review and approval prior to installation. All prospective bidders shall visit the site prior to bid submission to verify field conditions and scope of work. Coordinate main fire protection service size requirements and all locations of fire protection mains serving the building with the Civil Engineer and Architect prior to bid submission. Provide flow and tamper switches as required and coordinate terminations with the electrical contractor. Main fire protection service is existing, provide new drops to new sprinkler heads.
- Sprinkler head locations shall be used as a guide for bid. Sprinkler locations show approximate locations with full rcp and field coordination to be provided by the successful contractor. Provide all heads as required per NFPA 13. Verify locations and sizes of existing fire protection piping and heads. Verify all new piping and head requirements with hydraulic calculations.
- The suggested sprinkler locations are not intended to limit the contractor from providing another design that may be more economical and still meet the requirements of the local Authority Having Jurisdiction and NFPA.
- Comply with Architectural requirements for painting interior piping. Paint exposed, interior metal piping, valves, and piping specialties, except components, with factory-applied paint or protective coating. Exposed sprinkler heads shall be ordered according to color requirements below.

W.B. Light Industrial Coating: MPI INT 5.1B - G5. Prime Coat: Rust Inhibitive Primer. (MPI #107). Intermediate Coat: W.B. Light Industrial Coating (MPI #153). Topcoat: W.B. Light Industrial Coating (MPI #153). Color: Black.

Damage and Touchup: Repair marred and damaged factory-applied finishes with materials and by procedures to match original factory finish.
- Working plans and computerized hydraulic calculations shall be prepared by a minimum Level 3 N.I.C.E.T. Certified Sprinkler Layout Designer. Submit working plans and hydraulic calculations signed and sealed by a Professional Fire Protection Engineer registered in the state in which the project is located, to Authorities that Have Jurisdiction. Design documents are for permit purposes. The design is not intended to limit the contractor from providing another design that may be more economical and still meet the requirements of the Local Authority Having Jurisdiction. All drawings, including As-Builts, shall be submitted on disc using AUTO CAD.
- The hydraulic calculations shall include the pressure drop through all pipe, fittings and devices, including the pressure drop through the reduced pressure principle backflow preventer, from the most hydraulic remote point of the sprinkler system to the location of the test hydrant.
- Submit drawings to local fire dept. and obtain necessary approvals, permits and certificates prior to submission to the engineer for final review.
- Where required by code or directed by local authorities, contractor shall provide seismic hanging & constraints on all piping in complete accordance with the latest issue of the State Plumbing Building Code, local codes and NFPA.
- The fire protection contractor shall provide a guarantee covering all design, installation, material and workmanship for five years following date of acceptance by Owner.
- The hydraulic calculations shall be based on the flow test data listed below (this information shall be provided by the fire protection contractor at submittal of shop drawings and calculations):
 - Static pressure psi.
 - Residual pressure psi.
 - Flow gpm.
 - Flow/test hydrant locations.
 - Date of test.
 - Time of test.
 - Responsible party conducting test.
 - Hydrant outlet discharge coefficient.
- Piping shall be sloped to drain back to sprinkler riser. Auxiliary drainage in accordance with NFPA 13 shall be provided for all trapped sections of pipe.
- Pipe all drains and inspector's test to outside, or discharge to a drain approved by the owner for sprinkler discharge.
- Provide automatic sprinkler below obstructions 48 inches and wider. (platforms, ductwork, stairways, unit heater, etc).
- Refer to the architectural drawings for reflected ceiling plans and coordinate all work with all other contractors prior to installation of the sprinkler system. Up front field coordination between all contractors is required due to limited space constraints.

REVISION RECORD		
NO.	DATE	REMARKS

IT IS A VIOLATION OF STATE LAW FOR ANY PERSON, UNLESS ACTING UNDER THE DIRECTION OF A NEW YORK STATE ARCHITECT OR ENGINEER, TO ALTER ANY ITEM ON THIS DOCUMENT IN ANY WAY. IF ANY ITEM ON THIS DOCUMENT IS ALTERED, THE ALTERING ARCHITECT OR ENGINEER SHALL AFFIX TO HIS ITEM HIS SEAL AND THE NOTATION "ALTERED BY" FOLLOWED BY HIS SIGNATURE, THE DATE OF SUCH ALTERATION AND A SPECIFIC DESCRIPTION OF SUCH ALTERATION.



**Bryant and Stratton
College**

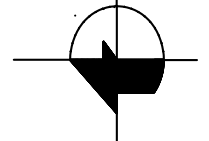
**BRYANT & STRATTON
COLLEGE**

LOWER LEVEL RENOVATIONS

10950 W Potter Rd
Wauwatosa, WI 53226

SEAL:

FIRE PROTECTION LEGENDS, SCHEDULES, & SPECIFICATIONS

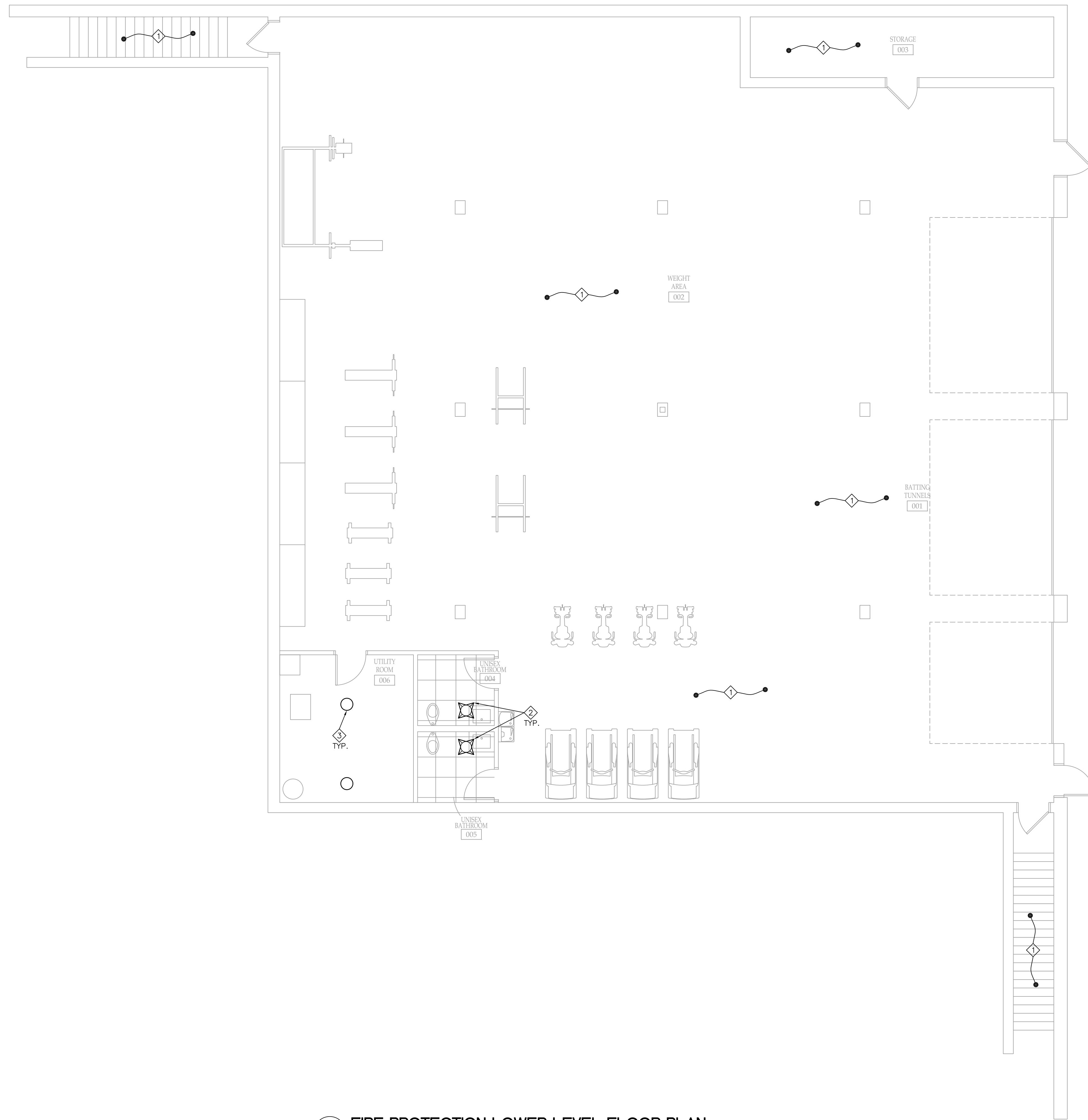


GREGORY A. TOMSIC

REGISTERED ARCHITECT

145 BATHURST DR., TONAWANDA, N.Y. 14150
716-433-0617

SCALE	JOB NO.
	25
DRAWN	DWG. NO.
	FP-1
CHECKED	
DATE	CONTRACT NO.
04.10.2020	



1
FP-2 FIRE PROTECTION LOWER LEVEL FLOOR PLAN
SCALE: 3/16" = 1'-0"

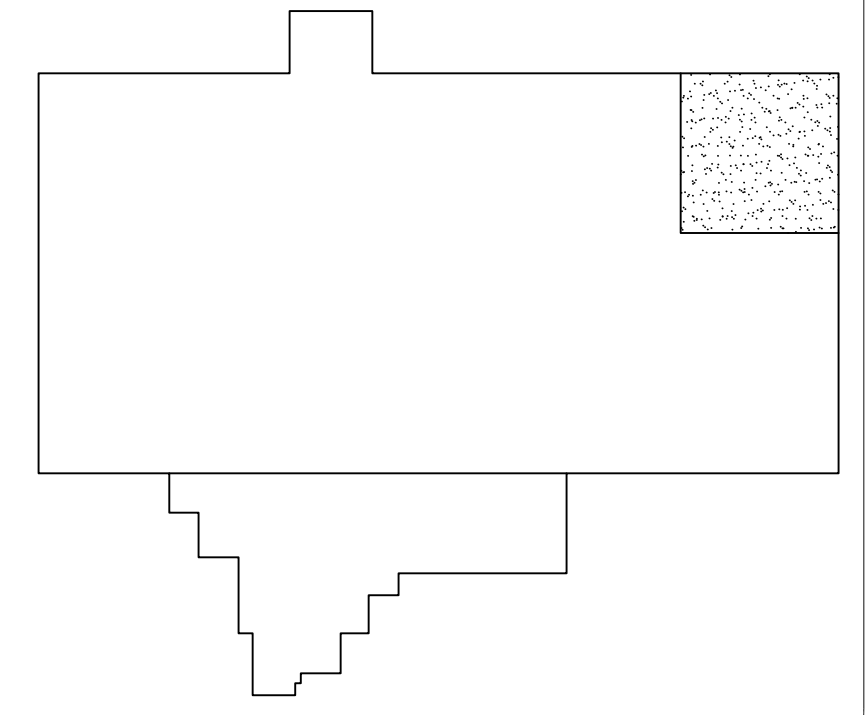
GENERAL FIRE PROTECTION DRAWING NOTES:

1. CONTRACTOR TO FOLLOW OCCUPANCY HAZARDS REFERRED TO IN DRAWINGS NOTES. IF NO HAZARD OR NOTE IS GIVEN FOR A SPACE, THE CONTRACTOR IS TO FOLLOW NFPA 13. SPRINKLER SYSTEM IS EXISTING - REUSE HEADS AS MUCH AS POSSIBLE. SHOULD EXISTING HEADS NOT BE FUNCTIONAL OR ARE DAMAGED, HEADS ARE TO BE REPLACED TO MEET DRAWING REQUIREMENTS. ALL DIRTY HEADS IN WORK AREA SHALL BE CLEANED PER NFPA 13.
2. COORDINATE ALL PIPING WITH EXISTING STRUCTURE AND ALL OTHER WORK. COORDINATE WORK WITH CEILING TYPES SHOWN ON ARCHITECTURAL DRAWINGS. ALL PLACES WITH EXISTING CEILINGS - SPRINKLER HEADS SHALL REMAIN AS CURRENTLY LOCATED. ALL SPRINKLER WORK SHOWN IS IN NEW CEILING AREAS.
3. CONTRACTOR TO COORDINATE WITH CEILING, STRUCTURAL, MECHANICAL, PLUMBING, AND ELECTRICAL CONTRACTORS IN REGARDS TO RUNNING SPRINKLER PIPING AND HEAD LOCATIONS BEFORE BEGINNING WORK. PIPING TO BE CONCEALED AS MUCH AS POSSIBLE. ANY PIPING NOT ABLE TO BE CONCEALED IS TO BE PAINTED PER SPECIFICATIONS.
4. WHERE UPRIGHT SPRINKLER HEADS ARE SHOWN, SPRINKLER PIPING IS TO RUN EXPOSED TO EACH HEAD.

FIRE PROTECTION DRAWING NOTES:

(THIS IS A MASTER LIST. NOT EVERY NOTE IS USED ON EVERY FIRE PROTECTION DRAWING.)


1. SPACES NOTED ARE OUTSIDE THE WORK AREA. COVERAGE IN THESE AREAS SHALL NOT BE INTERRUPTED. IF DISRUPTIONS CANNOT BE AVOIDED, COORDINATE WITH OWNER BEFORE BEGINNING WORK.
2. PROVIDE WET SPRINKLER SYSTEM INSTALLED AS PER NFPA 13, TYPICAL FOR RESTROOMS. THE SPACES ARE LIGHT HAZARD. SEE GENERAL NOTES.
3. PROVIDE WET SPRINKLER SYSTEM INSTALLED AS PER NFPA 13, TYPICAL FOR UTILITY ROOM. THE SPACE IS ORDINARY HAZARD GROUP 1. SEE GENERAL NOTES.



BUILDING (LOWER LEVEL) KEYPLAN

REVISION RECORD		
NO.	DATE	REMARKS

IT IS A VIOLATION OF STATE LAW FOR ANY PERSON, UNLESS ACTING UNDER THE DIRECTION OF A NEW YORK STATE ARCHITECT OR ENGINEER, TO ALTER ANY ITEM ON THIS DOCUMENT IN ANY WAY. IF ANY ITEM ON THIS DOCUMENT IS ALTERED, THE ALTERING ARCHITECT OR ENGINEER SHALL AFFIX TO HIS ITEM HIS SEAL AND THE NOTATION "ALTERED" FOLLOWED BY HIS SIGNATURE, THE DATE OF SUCH ALTERATION AND A SPECIFIC DESCRIPTION OF SUCH ALTERATION.



Bryant and Stratton College
BRYANT & STRATTON COLLEGE
LOWER LEVEL RENOVATIONS
10950 W Potter Rd
Wauwatosa, WI 53226

SEAL:

FIRE PROTECTION LOWER LEVEL FLOOR PLAN

GREGORY A. TOMSIC
REGISTERED ARCHITECT
145 BATHURST DR., TONAWANDA, N.Y. 14150
716-433-0617

SCALE	JOB NO.
	25
DRAWN	DWG. NO.
	FP-2
CHECKED	CONTRACT NO.
DATE	
04.10.2020	