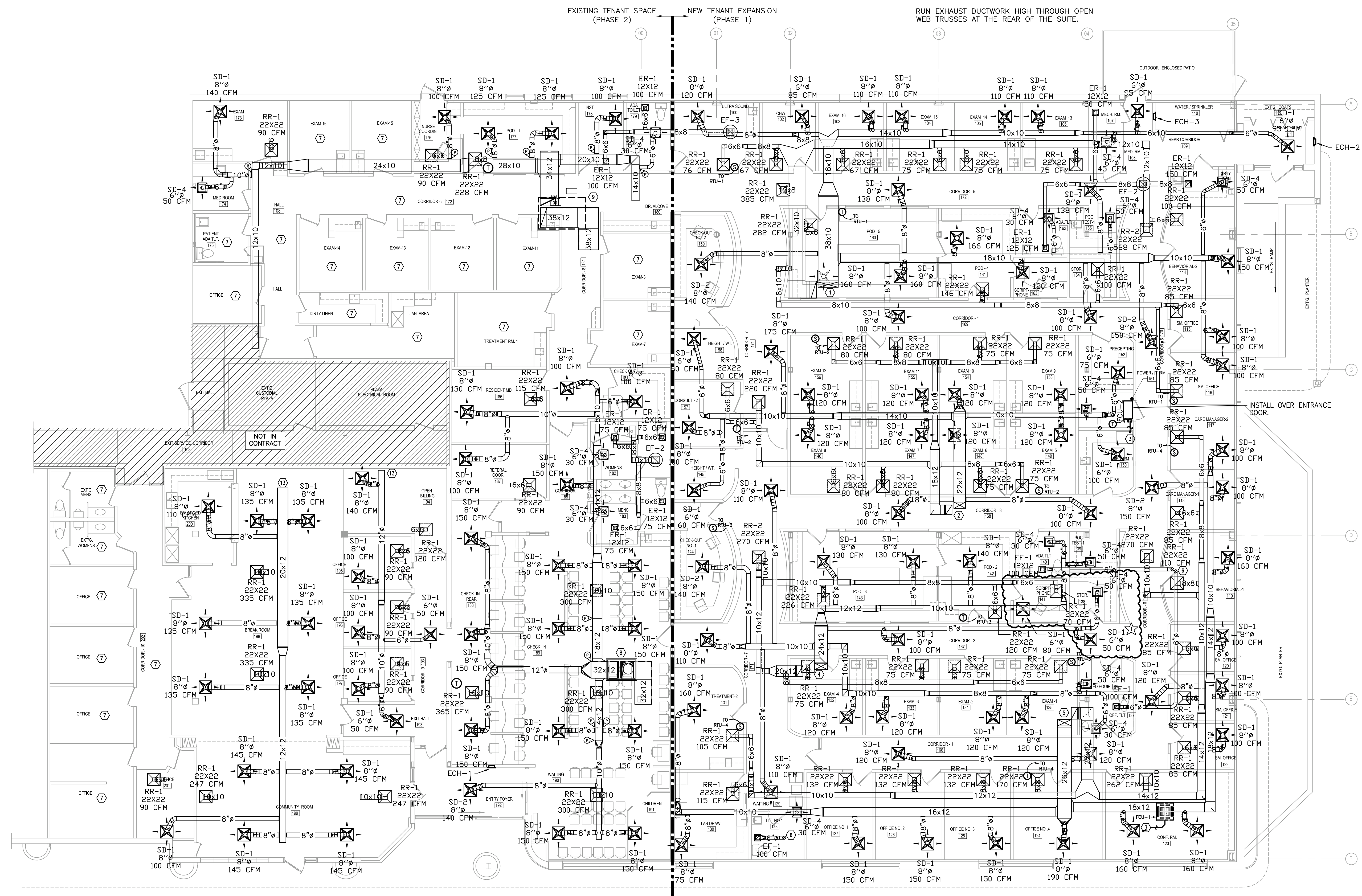


SOUTHERN TIER COMMUNITY HEALTH CENTER NETWORK, INC.
 ONE BLUEBIRD SQUARE
 135 NORTH UNION STREET
 SUITE NO. 5
 CITY OF OLEAN, NEW YORK

PARK CENTER DEVELOPMENT COMPANY



HVAC DUCTWORK NOTES:

- SUPPLY AND RETURN TO RTU-1 ON ROOF.
- SUPPLY AND RETURN TO RTU-2 ON ROOF.
- 3/4" CONDENSATE DRAIN LINE TO NEAREST SANITARY DRAIN. REFER TO PLUMBING DRAWINGS FOR DRAIN LOCATION.
- SUPPLY AND RETURN TO RTU-3 ON ROOF.
- SUPPLY AND RETURN TO RTU-4 ON ROOF.
- PROVIDE EXHAUST DUCTWORK UP THROUGH ROOF TO ROOF CAP.
- UTILIZE EXISTING ROOFTOP UNIT AND DUCTWORK TO SUPPORT PHASE TWO RENOVATIONS. REBALANCE AS REQUIRED TO ACHIEVE AIRFLOWS. RELOCATE EXISTING THERMOSTAT TO BEHIND CHECK IN COUPLER. REUSE EXISTING DUCTWORK AND MAKE APPROPRIATE CONNECTIONS WHERE SHOWN. PLENUM RETURNS ARE EXISTING WITHIN PHASE TWO PORTION OF THE PROJECT.
- UTILIZE EXISTING ROOFTOP UNIT AND DUCTWORK TO SUPPORT PHASE TWO RENOVATIONS. REBALANCE AS REQUIRED TO ACHIEVE AIRFLOWS. RELOCATE EXISTING THERMOSTAT TO POD 1. REUSE EXISTING DUCTWORK AND MAKE APPROPRIATE CONNECTIONS WHERE SHOWN. PLENUM RETURNS ARE EXISTING WITHIN PHASE TWO PORTION OF THE PROJECT.
- CONNECT NEW DUCTWORK TO EXISTING AND EXISTING RTU SERVING THIS AREA. REBALANCE TO PROVIDE REQUIRED AIRFLOWS.
- EXISTING ROOFTOP UNIT SCHEDULED TO BE REPLACED IN KIND DURING PHASE TWO RENOVATIONS. TWO ROOFTOP UNIT MODEL NUMBERS AS FOLLOWS:
 A. #48HD008510
 B. #48HD008510
- RECONNECT EXISTING DUCTWORK, PROVIDE ELECTRICAL CONNECTIONS, PROVIDE NATURAL GAS CONNECTIONS AND NEW THERMOSTATS FOR BOTH UNITS. LOCATE THERMOSTATS PER THE OWNER. NEW UNITS TO COMPLY WITH NOTES ON SCHEDULE SHEET FOR UNITS 1-4 SCHEDULED FOR PHASE ONE.
- CONNECT NEW SUPPLY DUCTWORK INTO EXISTING FIELD. VERIFY ALL CONDITIONS AND REBALANCE TO ACHIEVE AIRFLOWS SHOWN.

HVAC DUCTWORK GENERAL NOTES:

- PROVIDE VOLUME DAMPERS AT ALL BRANCH DUCTWORK TAPS AND DUCT TAKEOFFS.
- COORDINATE EXACT LOCATIONS OF TEMPERATURE SENSORS AND THERMOSTATS IN FIELD WITH ARCHITECT PRIOR TO INSTALLATION TO AVOID CONFLICTS WITH WALL MOUNTED ARCHITECTURAL ITEMS.
- INSTALL VOLUME DAMPERS PER DETAILS AND AT ALL BRANCH TAKEOFFS. DAMPERS NOT SHOWN FOR DRAWING CLARITY.
- PROVIDE ACCESS DOORS FOR ALL HVAC EQUIPMENT AND VOLUME DAMPERS LOCATED ABOVE DRYWALL CEILINGS. COORDINATE WITH ROPE.

1 UPC - HVAC AND DUCTWORK FLOOR PLAN
 SCALE: 1/8" = 1'-0"

NO.	DATE	BY	REVISION
1	10-10-18	ADDENDUM #1	
2	11-15-18		
3	12-10-18		
4	01-10-19		
5	02-15-19		
6	03-15-19		
7	04-15-19		
8	05-15-19		
9	06-15-19		
10	07-15-19		
11	08-15-19		
12	09-15-19		
13	10-15-19		
14	11-15-19		
15	12-15-19		
16	01-15-20		
17	02-15-20		
18	03-15-20		
19	04-15-20		
20	05-15-20		
21	06-15-20		
22	07-15-20		
23	08-15-20		
24	09-15-20		
25	10-15-20		
26	11-15-20		
27	12-15-20		
28	01-15-21		
29	02-15-21		
30	03-15-21		
31	04-15-21		
32	05-15-21		
33	06-15-21		
34	07-15-21		
35	08-15-21		
36	09-15-21		
37	10-15-21		
38	11-15-21		
39	12-15-21		
40	01-15-22		
41	02-15-22		
42	03-15-22		
43	04-15-22		
44	05-15-22		
45	06-15-22		
46	07-15-22		
47	08-15-22		
48	09-15-22		
49	10-15-22		
50	11-15-22		
51	12-15-22		
52	01-15-23		
53	02-15-23		
54	03-15-23		
55	04-15-23		
56	05-15-23		
57	06-15-23		
58	07-15-23		
59	08-15-23		
60	09-15-23		
61	10-15-23		
62	11-15-23		
63	12-15-23		
64	01-15-24		
65	02-15-24		
66	03-15-24		
67	04-15-24		
68	05-15-24		
69	06-15-24		
70	07-15-24		
71	08-15-24		
72	09-15-24		
73	10-15-24		
74	11-15-24		
75	12-15-24		
76	01-15-25		
77	02-15-25		
78	03-15-25		
79	04-15-25		
80	05-15-25		
81	06-15-25		
82	07-15-25		
83	08-15-25		
84	09-15-25		
85	10-15-25		
86	11-15-25		
87	12-15-25		
88	01-15-26		
89	02-15-26		
90	03-15-26		
91	04-15-26		
92	05-15-26		
93	06-15-26		
94	07-15-26		
95	08-15-26		
96	09-15-26		
97	10-15-26		
98	11-15-26		
99	12-15-26		
100	01-15-27		

UNIVERSAL PRIMARY CARE
 ONE BLUEBIRD SQUARE
 INTERIOR ALTERATIONS & ADDITIONS
 CITY OF OLEAN, NEW YORK

MECHANICAL
 HVAC DUCTWORK
 M5

DATE: 10-10-18
 DRAWN BY: JTB
 CHECKED BY: JTB
 IN CHARGE BY: JTB
 PROJECT NO.: 181422