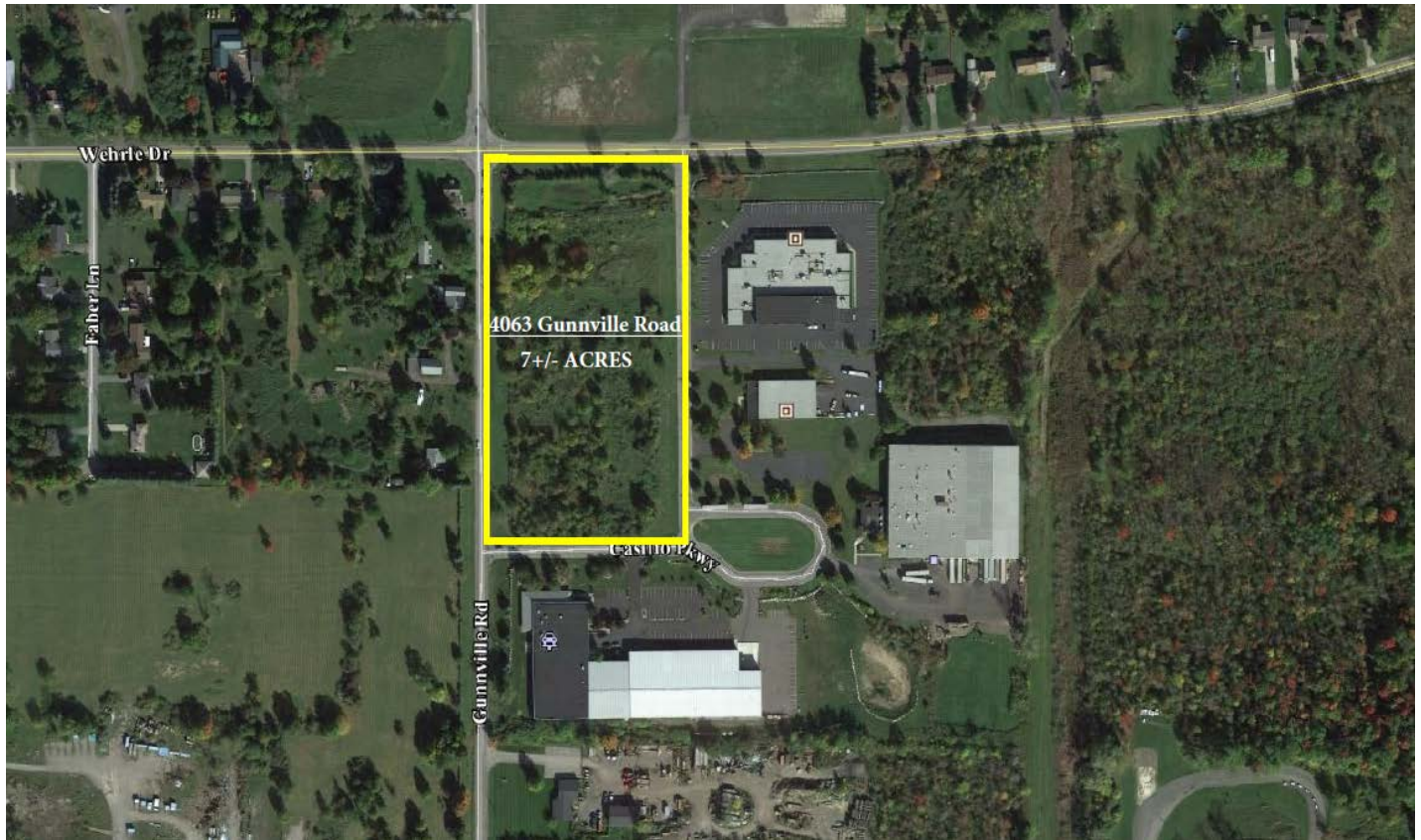


# WEHRLE HEIGHTS CORPORATE PARK

CLARENCE, NY 14031






VACANT LAND FOR SALE OR LEASE



## WEHRLE HEIGHTS CORPORATE PARK

-  **ACREAGE:** 7+/-
-  **ZONED:** LIGHT INDUSTRIAL

## LOCATION HIGHLIGHTS

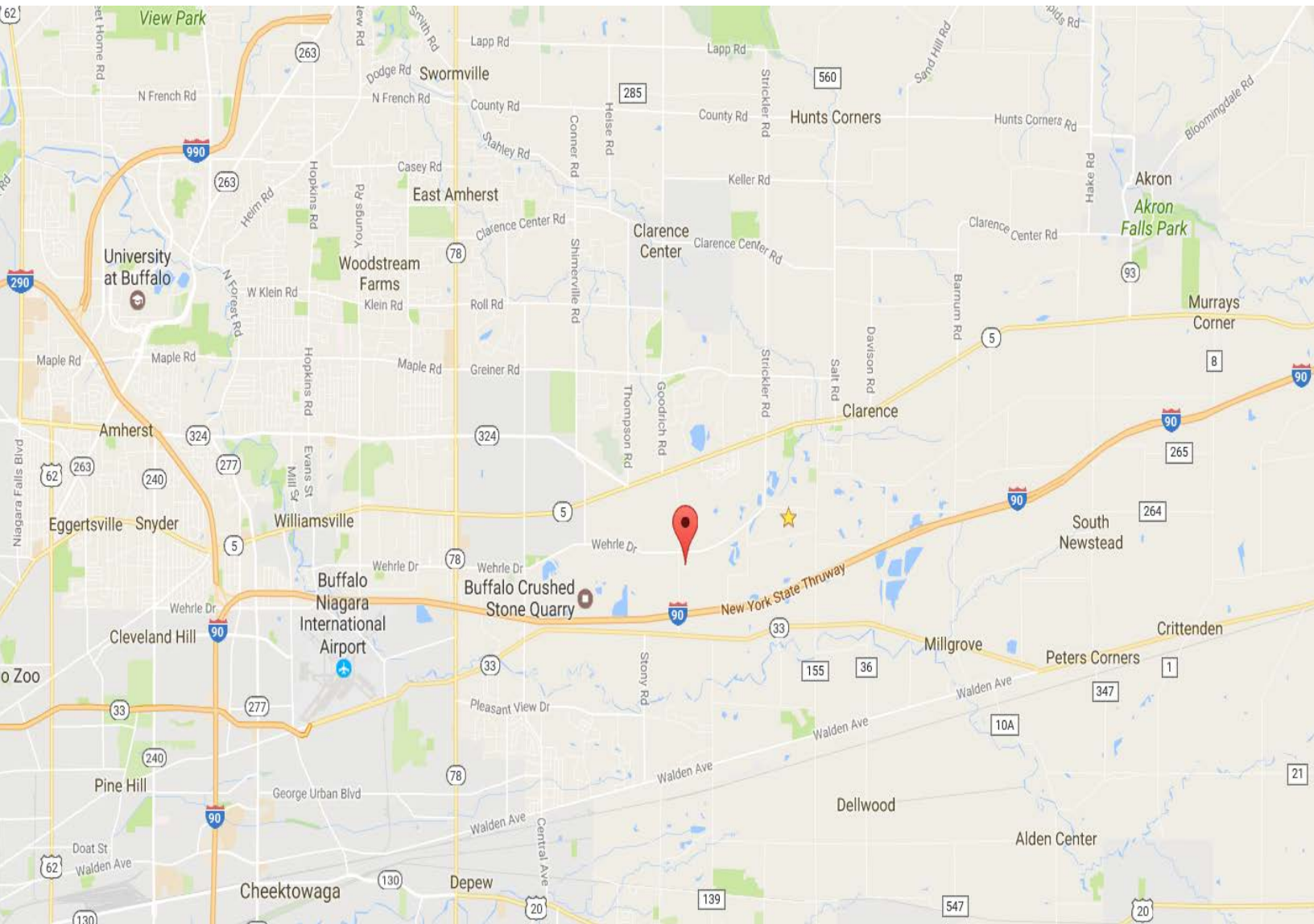
-  Located on Gunnville Road between Wehrle Drive and Genesee Street.
-  **12 miles** south of NYS Thruway I-90 Exit 48a.
-  **4.0 miles** east of Transit Road (Rt. 78).
-  **4.3 miles** from NYS Thruway I-90 Exit 49.
-  **6.3 miles** from the Buffalo Niagara International Airport.



# WEHRLE HEIGHTS CORPORATE PARK

CLARENCE, NY 14031

VACANT LAND FOR SALE OR LEASE



CASILIO REAL ESTATE & DEVELOPMENT CORP.  
2457 WEHRLE DRIVE, WILLIAMSVILLE NY 14221  
P: 716-633-7715 F: 716-633-9937 W: WWW.CASILIOCO.COM

PHILIP CASILIO, CAROLYN CASILIO  
PHILC@CASILIOCO.COM, CAROLYN@CASILIOCO.COM  
WEHRLE HEIGHTS CORPORATE PARK, CLARENCE, NY 14031