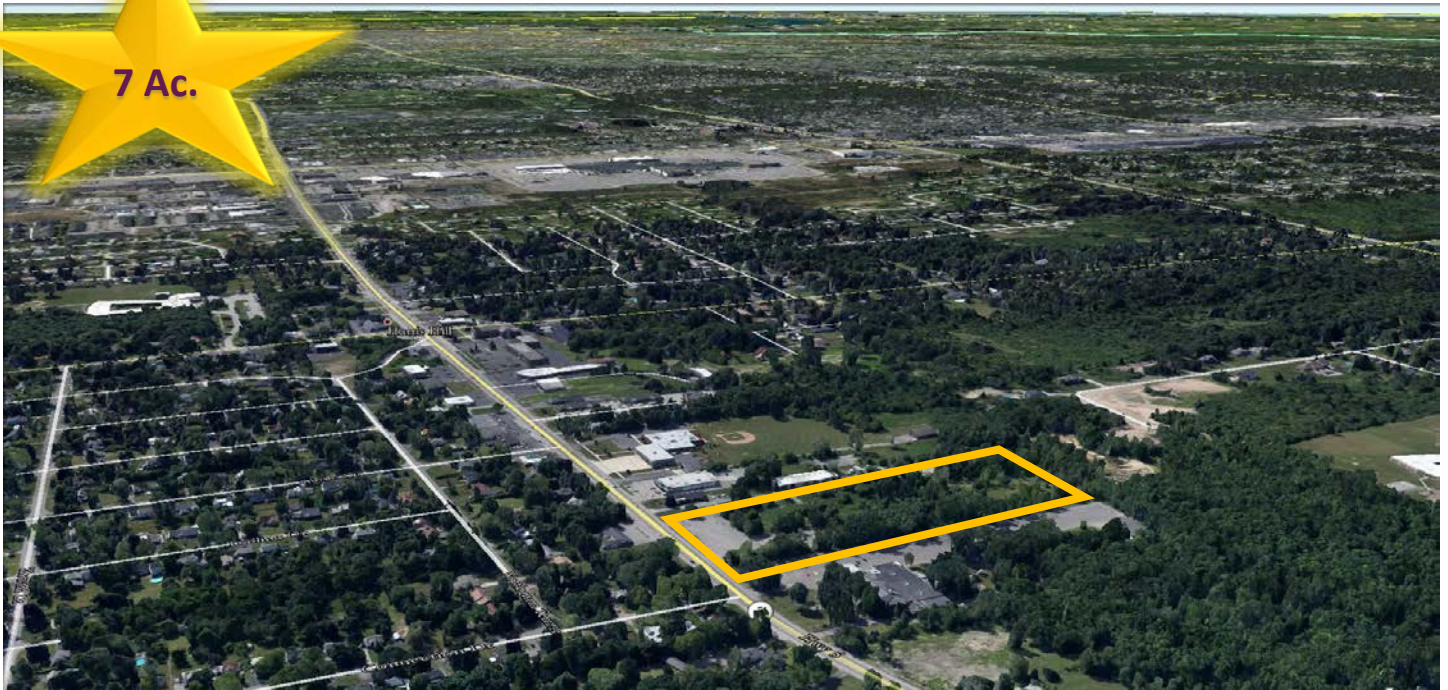


8700 MAIN STREET

PRIME VACANT LAND FOR LEASE



SUMMARY OF FEATURES

Acreage: 7 +/-
Zoned: Commercial

8700 Main Street's central location within the fastest growing community in Erie County make it an ideal space for any business venture.

Rendering is of a proposed medical office space due to the high demand in the area.



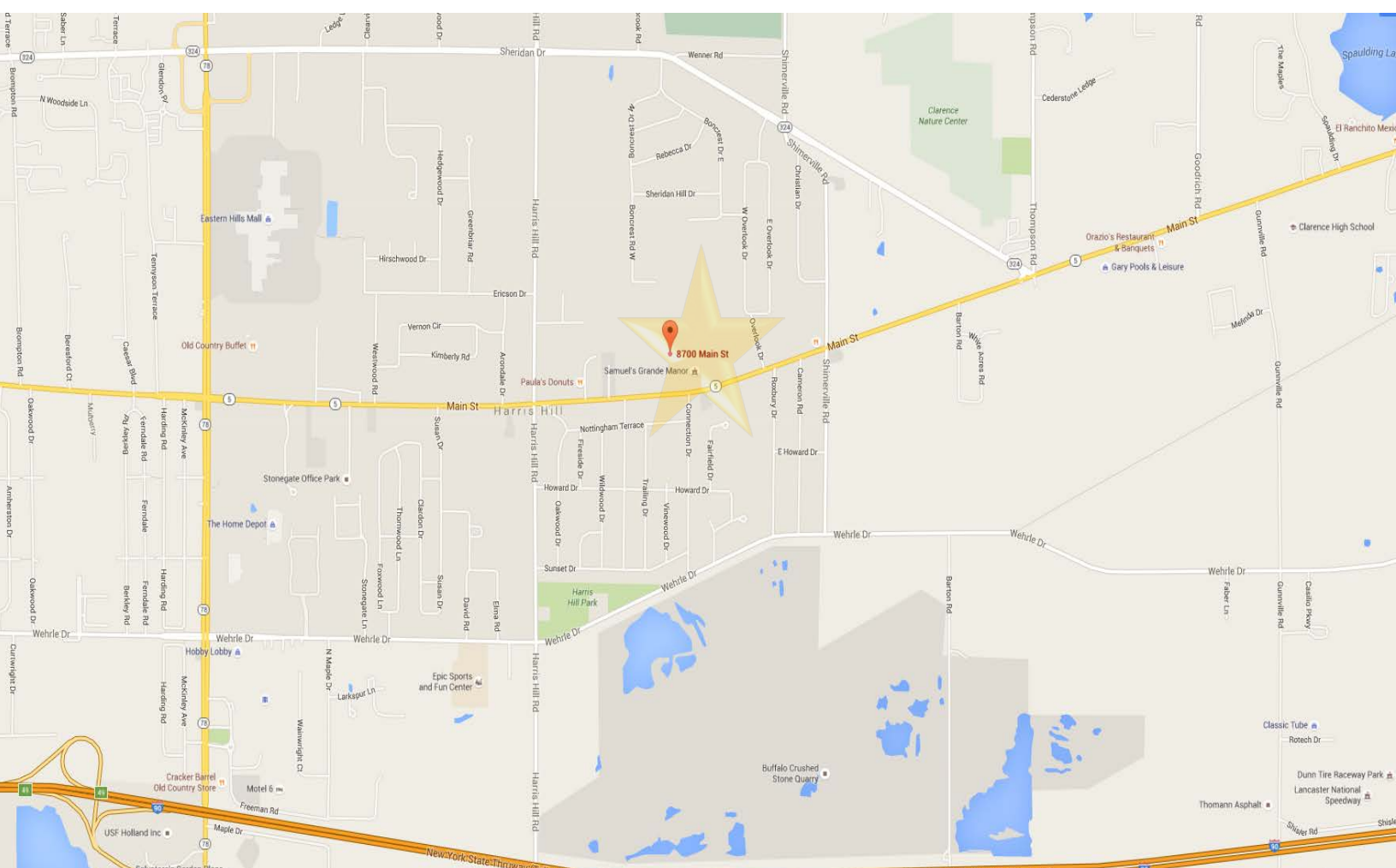
LOCATION

- ◆ Located on Main Street, minutes from Transit Road in the Town of Clarence, NY.
- ◆ Strategically positioned with easy access to NYS Thruway I-90.



8700 MAIN STREET

PRIME VACANT LAND FOR LEASE



CASILIO REAL ESTATE & DEVELOPMENT CORP.
2457 WEHRLE DRIVE, WILLIAMSVILLE NY 14221
P: 716-633-7715 F: 716-633-9937 W: WWW.CASILIOCO.COM

CAROLYN CASILIO
INFO@CASILIOCO.COM
8700 MAIN STREET, WILLIAMSVILLE, NY 14221