

# 42.2 ACRES ON WEHRLE DRIVE

EAST OF GUNVILLE ROAD

PRIME VACANT LAND FOR SALE



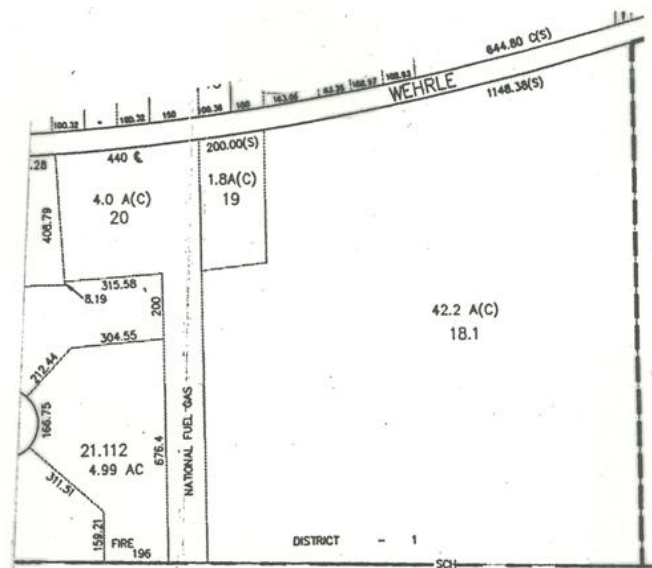
## SUMMARY OF FEATURES

Acreage: 42.2 +/-

- ◆ Priced at \$13,650
- ◆ Owner also accepting reasonable offers

## LOCATION

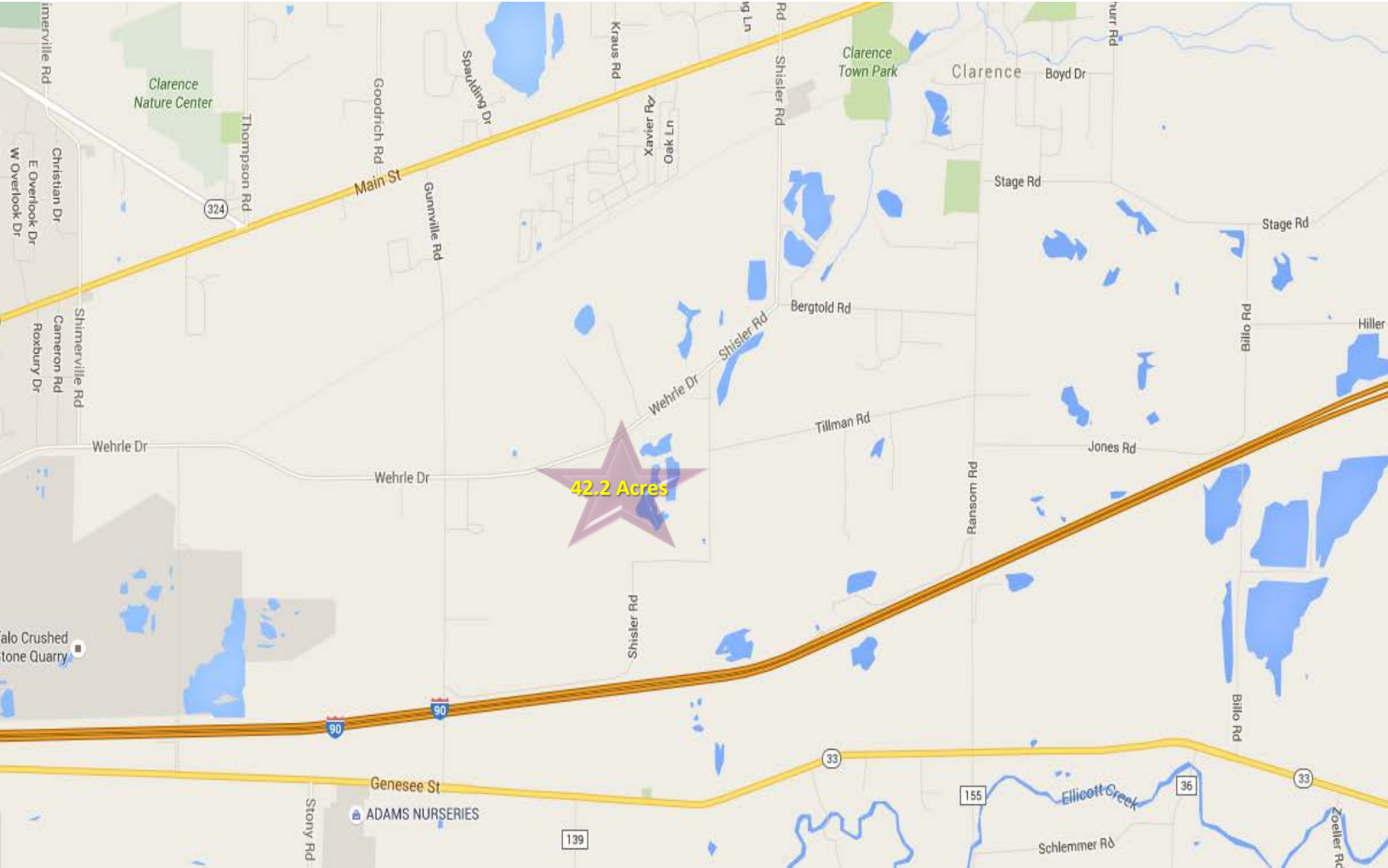
- ◆ Located less than five minutes from the NYS Thruway I-90.
- ◆ North of the Tops Distribution Center.
- ◆ Perpendicular to the Greatbatch Global Headquarters.



# 42.2 ACRES ON WEHRLE DRIVE

EAST OF GUNVILLE ROAD

PRIME VACANT LAND FOR SALE



CASILIO REAL ESTATE & DEVELOPMENT CORP.  
2457 WEHRLE DRIVE, WILLIAMSVILLE NY 14221  
P: 716-633-7715 F: 716-633-9937 W: WWW.CASILIOCO.COM

Carolyn Casilio  
info@casilio.com  
42.2 Acres on Wehrle Drive, Clarence, NY 14031