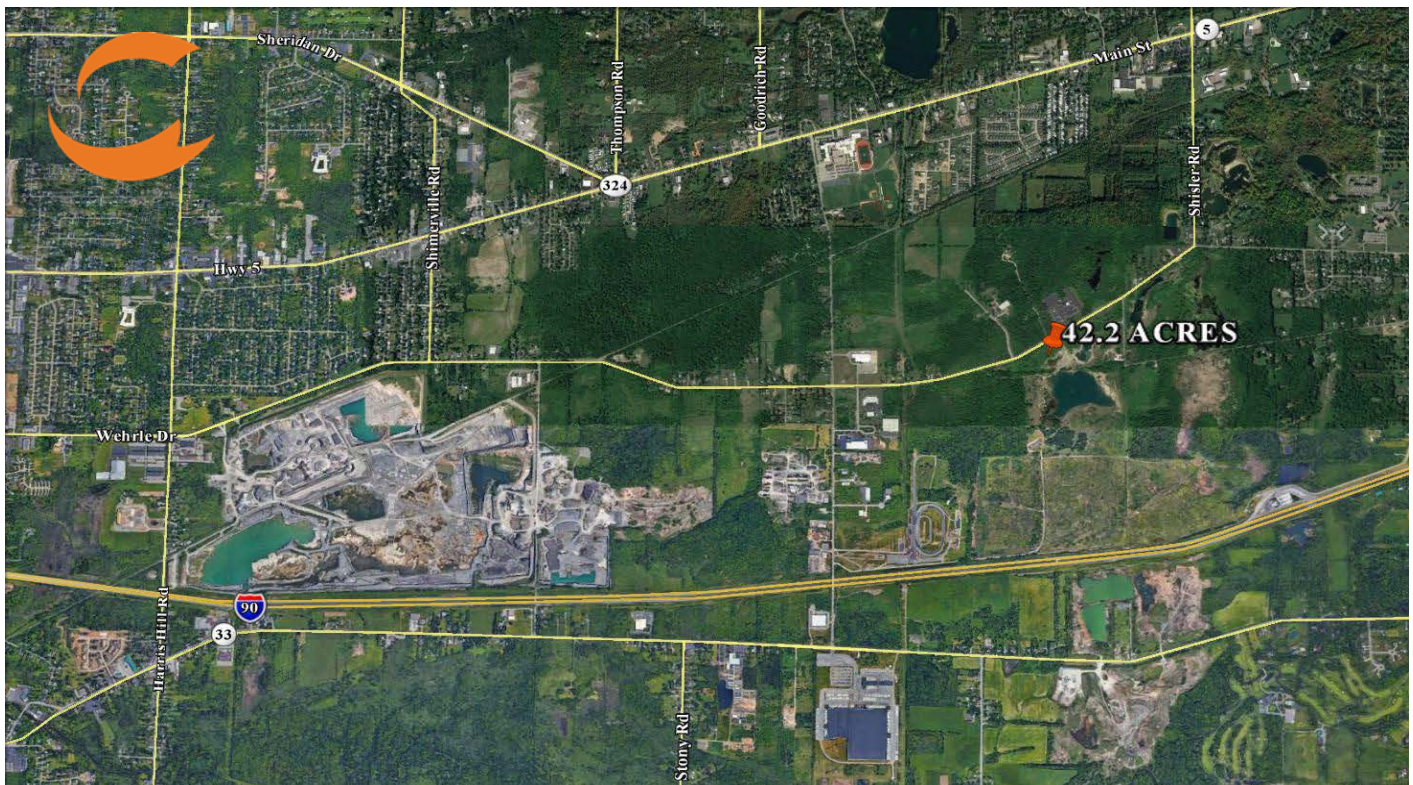


42.2 ACRES ON WEHRLE DRIVE

CLARENCE, NY 14031

VACANT LAND FOR SALE



PROPERTY HIGHLIGHTS

PRICE: \$13,650 PER ACRE
ACREAGE: 42.2 +/-
ZONED: COMMERCIAL

LOCATION HIGHLIGHTS

- Land can be sub-divided.
- 1.8 miles north of the **Tops Distribution Center**.
- 6 miles from **NYS Thruway I-90 Exit 49**
- 12 miles from **NYS Thruway Exit I-90 Exit 48a, Pembroke**.

