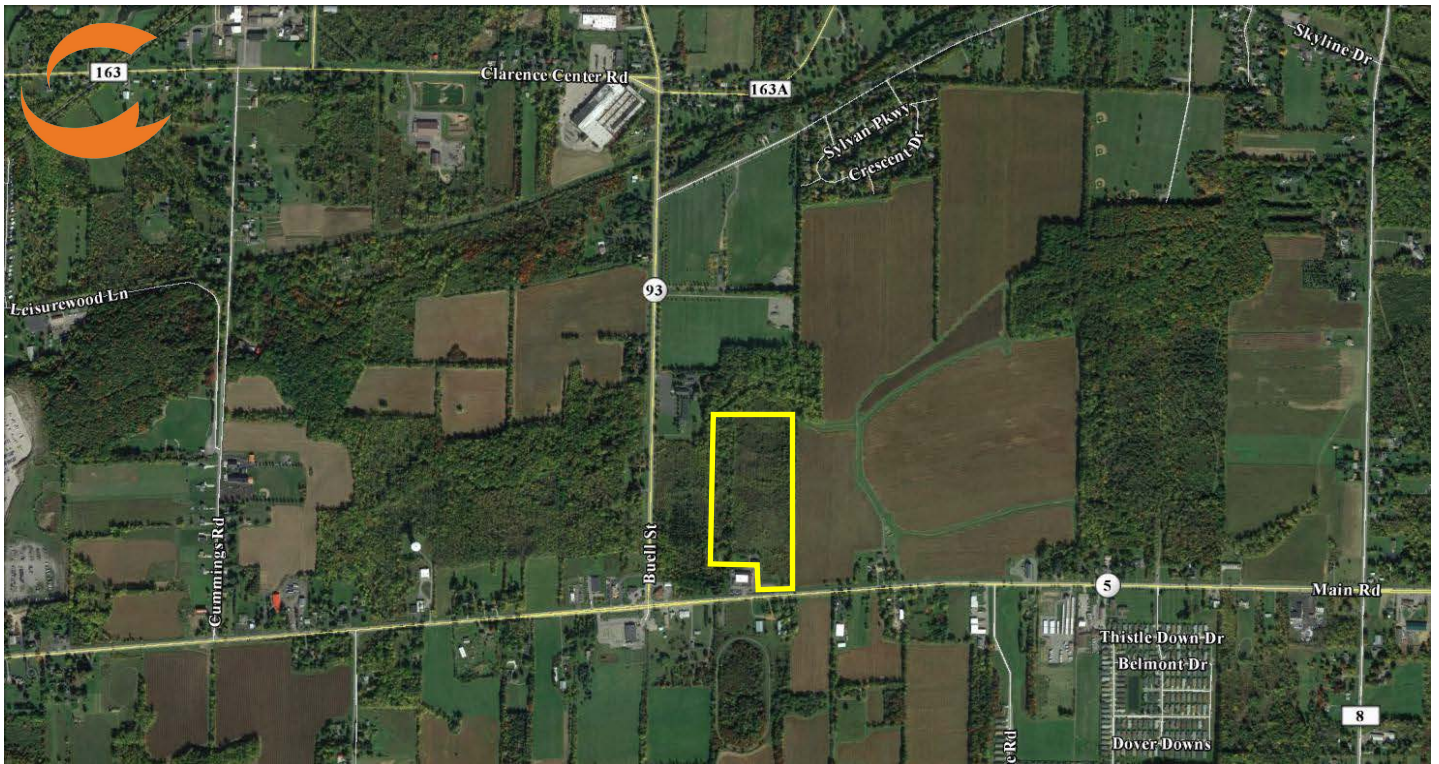


25 ACRES ON ROUTE 5

MAIN RD., NEWSTEAD, NY 14001

VACANT LAND FOR SALE



PROPERTY HIGHLIGHTS

ACREAGE: 25 +/-
ZONED: COMMERCIAL

LOCATION HIGHLIGHTS

- 📍 Located at Main Road, Route 5 and Buell Street
- 📍 Frontage on Main Road, Route 5.
- 📍 3.3 miles from Clarence Center Road.
- 📍 5 miles from NYS Thruway I-90 Exit 48A.
- 📍 11.8 miles from NYS Thruway I-90 Exit 49.
- 📍 Central location to the Metro Buffalo/Rochester regions within an area primed for manufacturing growth.

