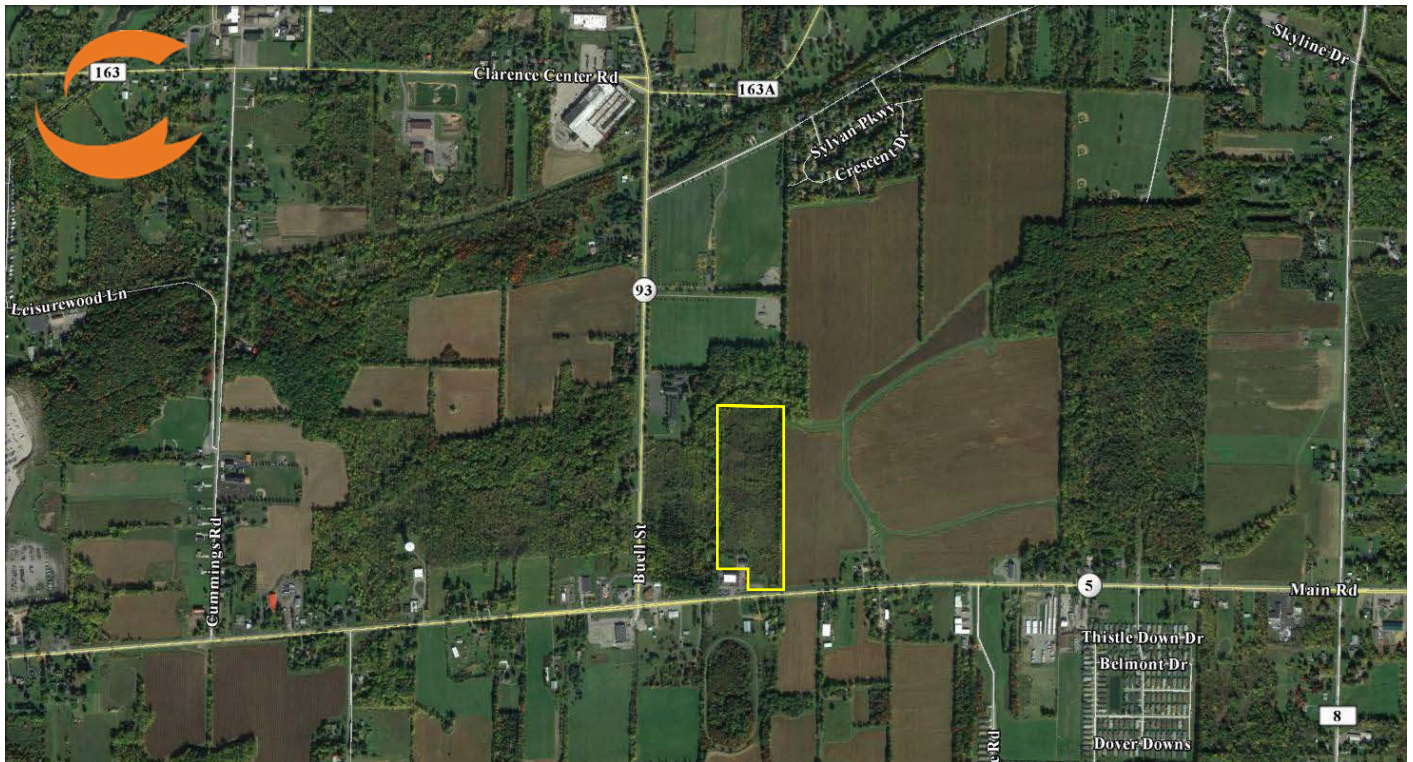


24.4 ACRES ON MAIN STREET

NEWSTEAD, NY 14001

VACANT LAND FOR SALE



PROPERTY HIGHLIGHTS

ACREAGE: 24.4 +/-
ZONED: COMMERCIAL

LOCATION HIGHLIGHTS

- Located at Main Road, Route 5 and Buell Street.
- Frontage on Main Road, Route 5.
- 3.3 miles from Clarence Center Road.
- 5 miles from NYS Thruway I-90 Exit 48A.
- 11.8 miles from NYS Thruway I-90 Exit 49.
- Central location to the Metro Buffalo/Rochester regions within an area primed for manufacturing growth.

