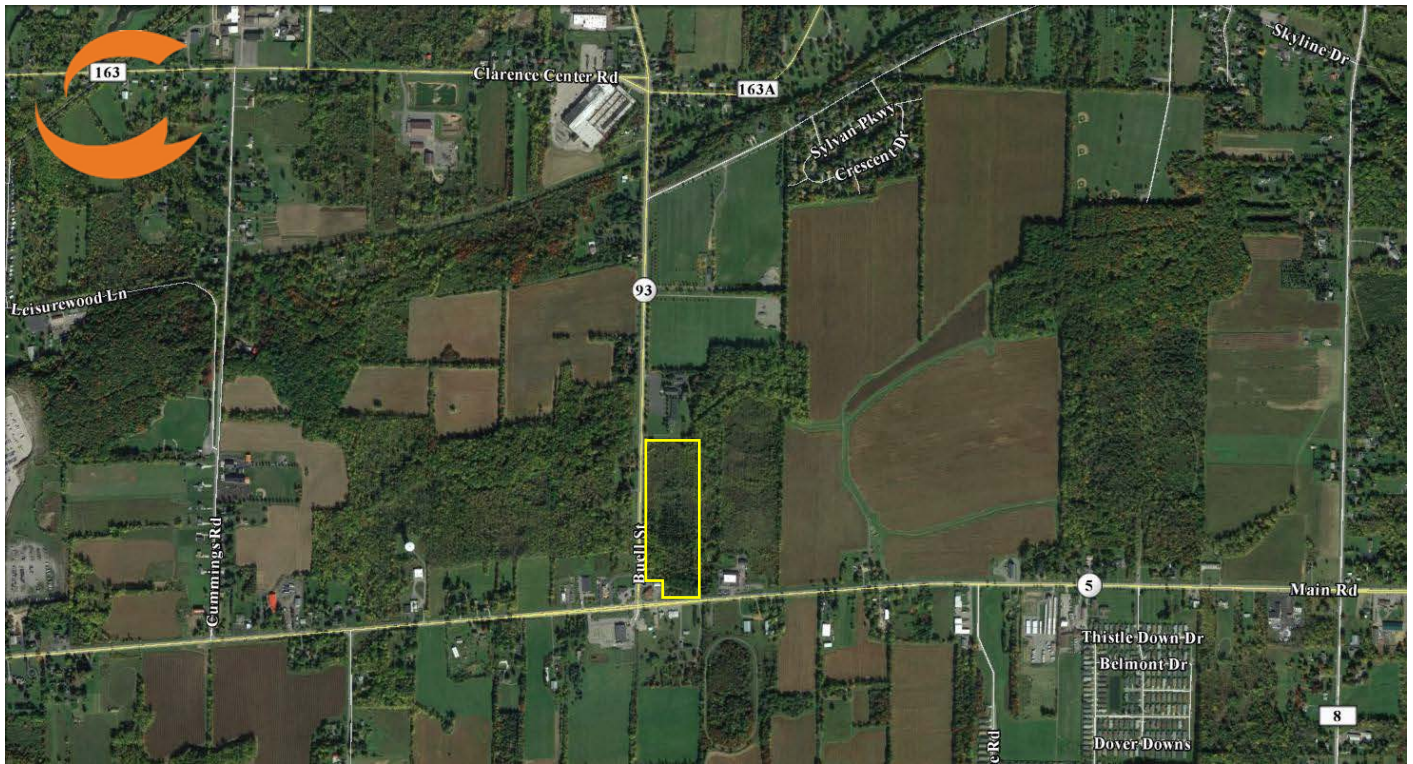


21.9 ACRES ON MAIN STREET

NEWSTEAD, NY 14001

VACANT LAND FOR SALE



PROPERTY HIGHLIGHTS

ACREAGE: 21.9 +/-

ZONED: COMMERCIAL

LOCATION HIGHLIGHTS

- 🌀 Located at Main Road, Route 5 and Buell Street
- 🌀 Frontage on Main Road, Route 5.
- 🌀 3.3 miles from Clarence Center Road.
- 🌀 5 miles from NYS Thruway I-90 Exit 48A.
- 🌀 11.8 miles from NYS Thruway I-90 Exit 49.
- 🌀 Central location to the Metro Buffalo/Rochester regions within an area primed for manufacturing growth.

