

# 8899 Main Street

Williamsville, NY 14221

OFFICE BUILDING FOR LEASE



## SUMMARY OF AVAILABLE AREAS

### AREA 2 **1,406 SF**

Five private offices, conference, copy/work room, private restroom and a separate and distinct entrance.

### AREA 3 **492 SF**

One private office with an adjoining open office/reception area.

### AREA 7 **1,307 SF**

Five private offices and a spacious central open area.

## LOCATION DETAILS

- ✓ Located on Main Street NYS State Route 5, in Williamsville, NY
- ✓ Two miles east of Transit Road (Rt. 78)
- ✓ Within the KeyBank business complex

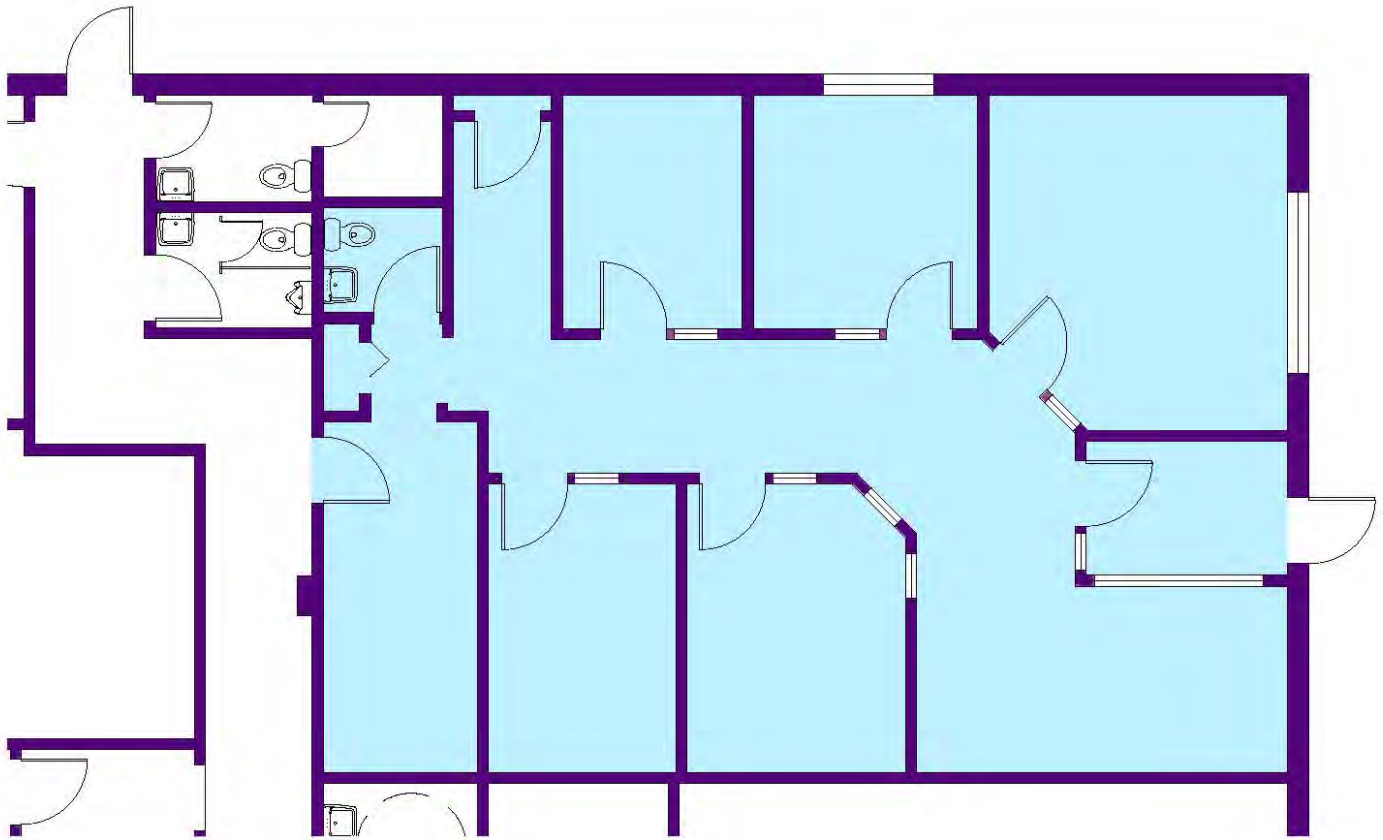
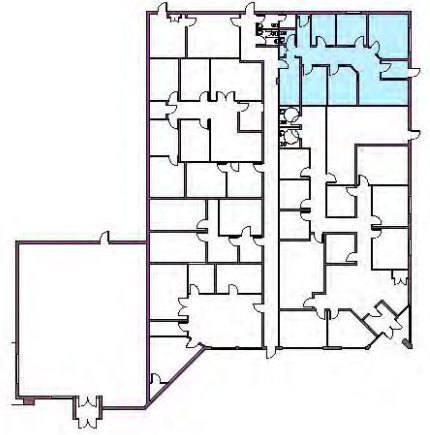


## CASILIO REAL ESTATE & DEVELOPMENT CORP.

2457 WEHRLE DRIVE, WILLIAMSVILLE NY 14221  
P: 716-633-7715 F: 716-633-9937 W: WWW.CASILIOCO.COM

## MARY POWELL

MARYP@CASILIOCO.COM  
8899 MAIN STREET, WILLIAMSVILLE, NY 14221



## AREA 2- 1406 SQUARE FEET

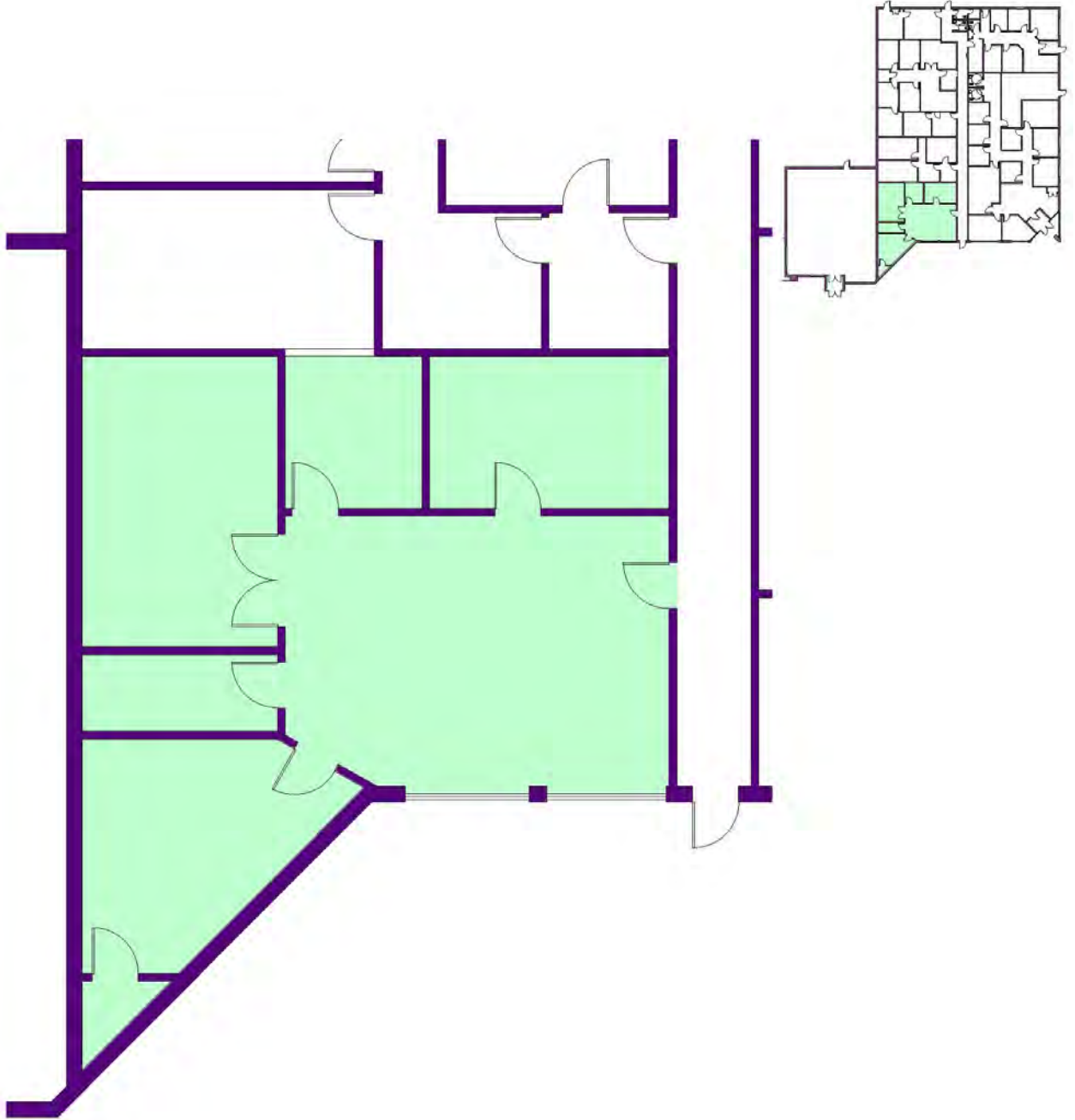


**8899 MAIN STREET**  
**Williamsville, New York 14221**

**Casilio Real Estate & Development Corp.**

2457 Wehrle Drive, Williamsville, New York 14221  
p. 716.633.7715 | f. 716.633.9937

DISCLAIMER: All information shown in this document is deemed reliable and is used to convey marketing information of the property. No representation is made as to the accuracy thereof, and such information is subject to errors, omission, change of price, rental, commission, prior sale, lease or financing, or withdrawal without notice. All square footage and dimensions are approximate. Exact dimensions can be obtained by retaining the services of a professional surveyor, architect or engineer.



## AREA 7- 1307 SQUARE FEET

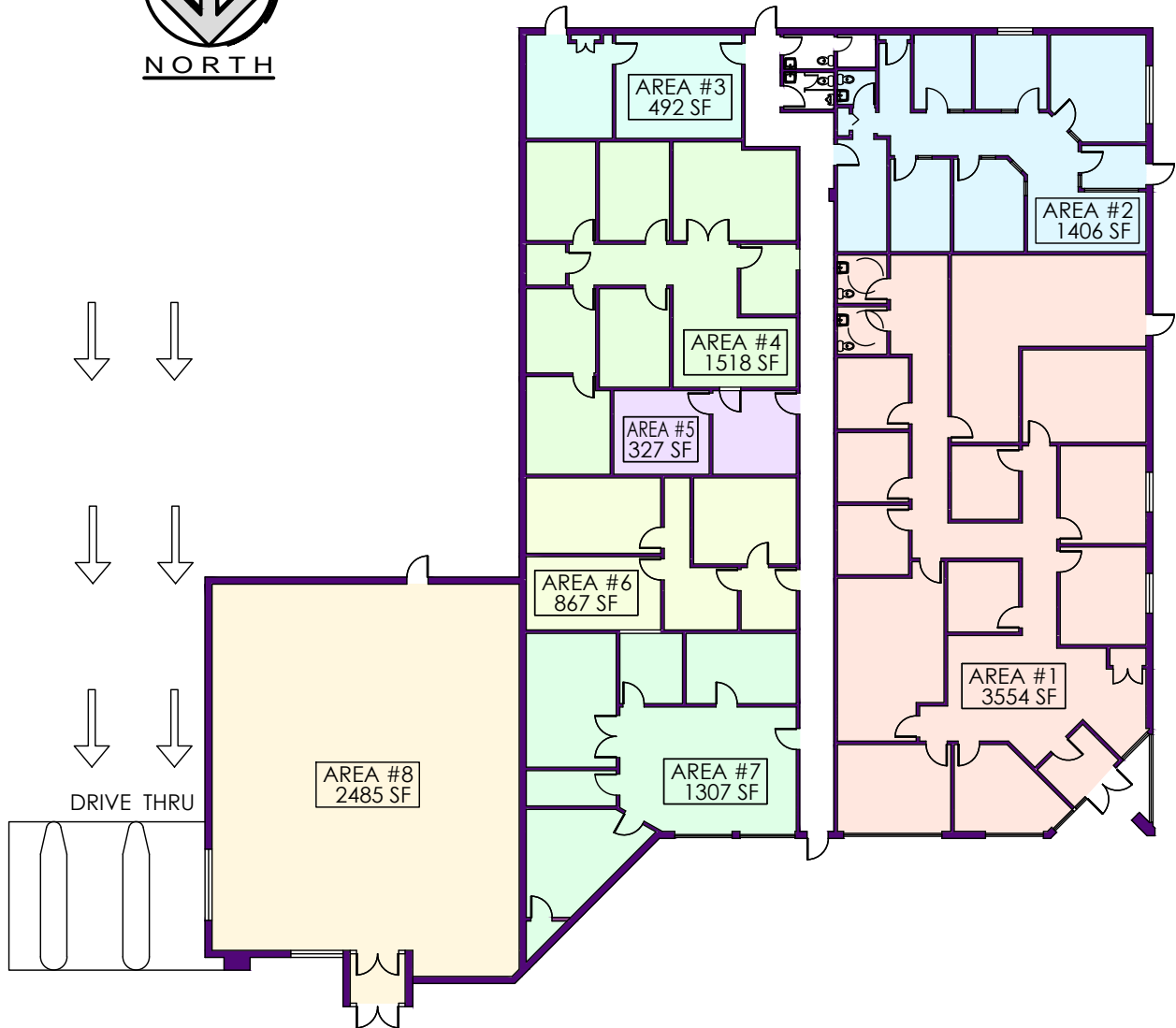


**8899 MAIN STREET**  
**Williamsville, New York 14221**

**Casilio Real Estate & Development Corp.**

2457 Wehrle Drive, Williamsville, New York 14221  
p. 716.633.7715 | f. 716.633.9937

DISCLAIMER: All information shown in this document is deemed reliable and is used to convey marketing information of the property. No representation is made as to the accuracy thereof, and such information is subject to errors, omission, change of price, rental, commission, prior sale, lease or financing, or withdrawal without notice. All square footage and dimensions are approximate. Exact dimensions can be obtained by retaining the services of a professional surveyor, architect or engineer.



## FLOOR PLAN



**8899 MAIN STREET**  
**Williamsville, New York 14221**

**Casilio Real Estate & Development Corp.**

2457 Wehrle Drive, Williamsville, New York 14221

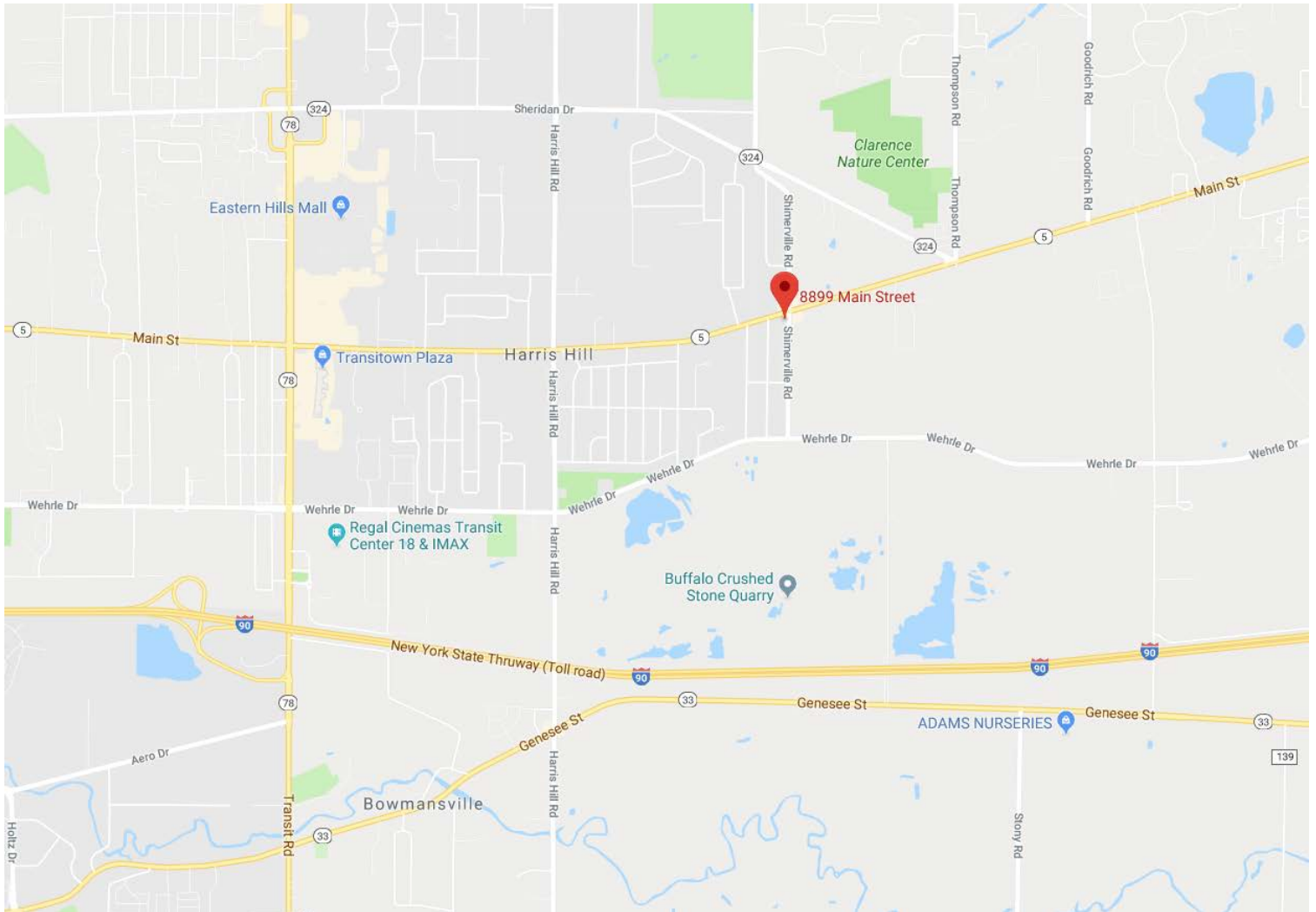
p. 716.633.7715 | f. 716.633.9937

DISCLAIMER: All information shown in this document is deemed reliable and is used to convey marketing information of the property. No representation is made as to the accuracy thereof, and such information is subject to errors, omission, change of price, rental, commission, prior sale, lease or financing, or withdrawal without notice. All square footage and dimensions are approximate. Exact dimensions can be obtained by retaining the services of a professional surveyor, architect or engineer.

# 8899 Main Street

Williamsville, NY 14221

OFFICE BUILDING FOR LEASE



**CASILIO REAL ESTATE & DEVELOPMENT CORP.**  
2457 WEHRLE DRIVE, WILLIAMSVILLE NY 14221  
P: 716-633-7715 F: 716-633-9937 W: WWW.CASILIOCO.COM

**MARY POWELL**  
MARYP@CASILIOCO.COM  
8899 MAIN STREET, WILLIAMSVILLE, NY 14221