

8899 MAIN STREET

OFFICE BUILDING FOR LEASE



SUMMARY OF AVAILABLE AREAS

AREA 2: 1,406 SF

Five private offices, conference, copy/work room, private restroom and a separate and distinct entrance.

AREA 3: 492 SF

One private office with an adjoining open office/reception area.

AREA 7: 1,307 SF

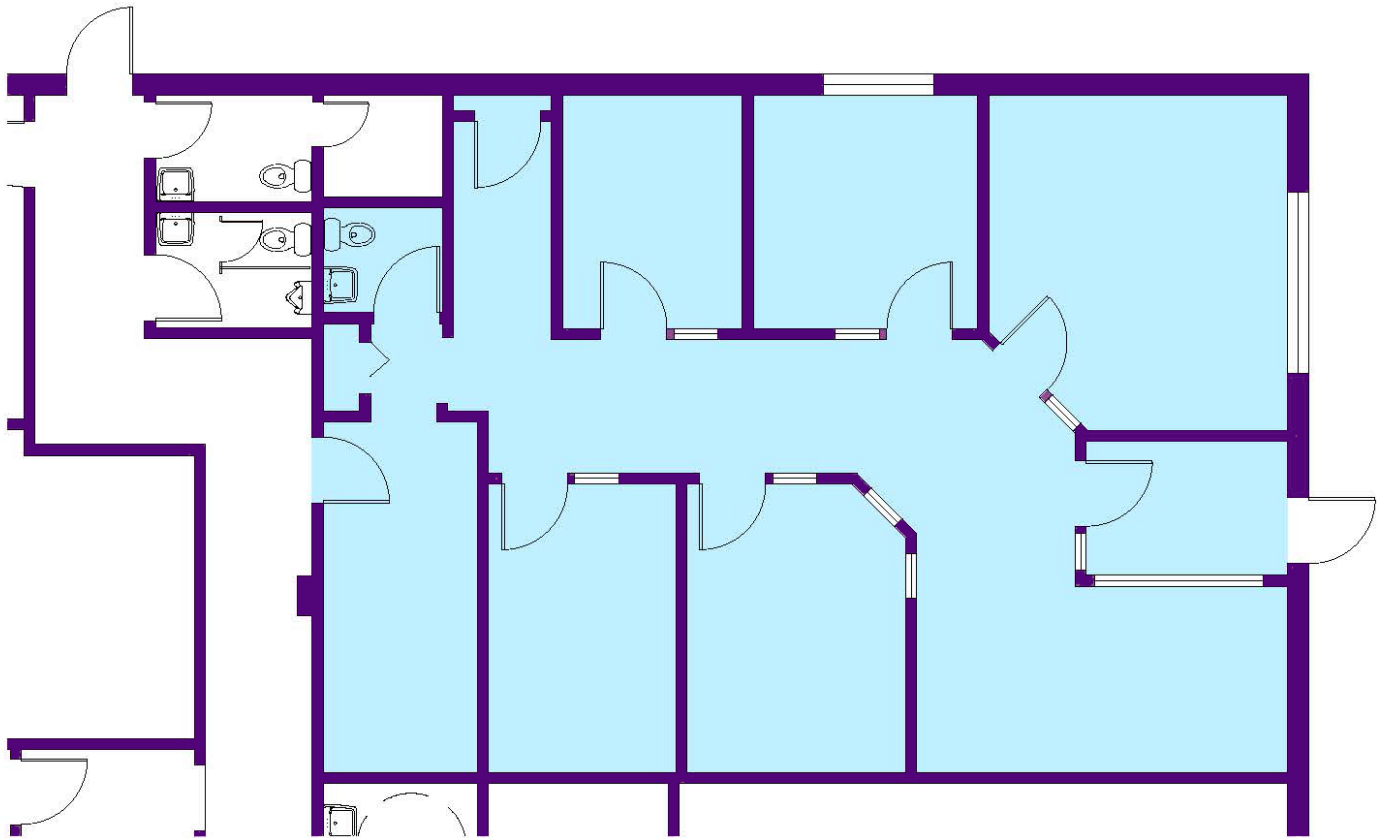
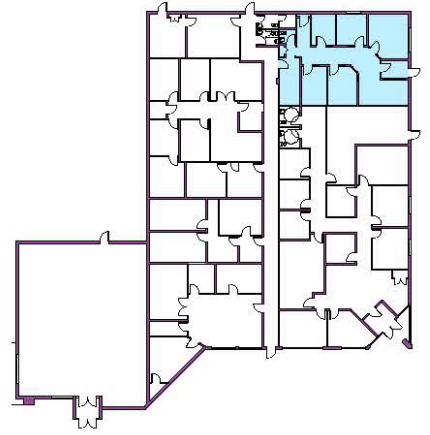
Five private offices and a spacious central open area.



LOCATION DETAILS

- ◆ Located on Main Street NYS State Route 5, in Williamsville, NY
- ◆ Two miles east of Transit Road (Rt. 78)
- ◆ Within the KeyBank business complex





AREA 2- 1406 SQUARE FEET

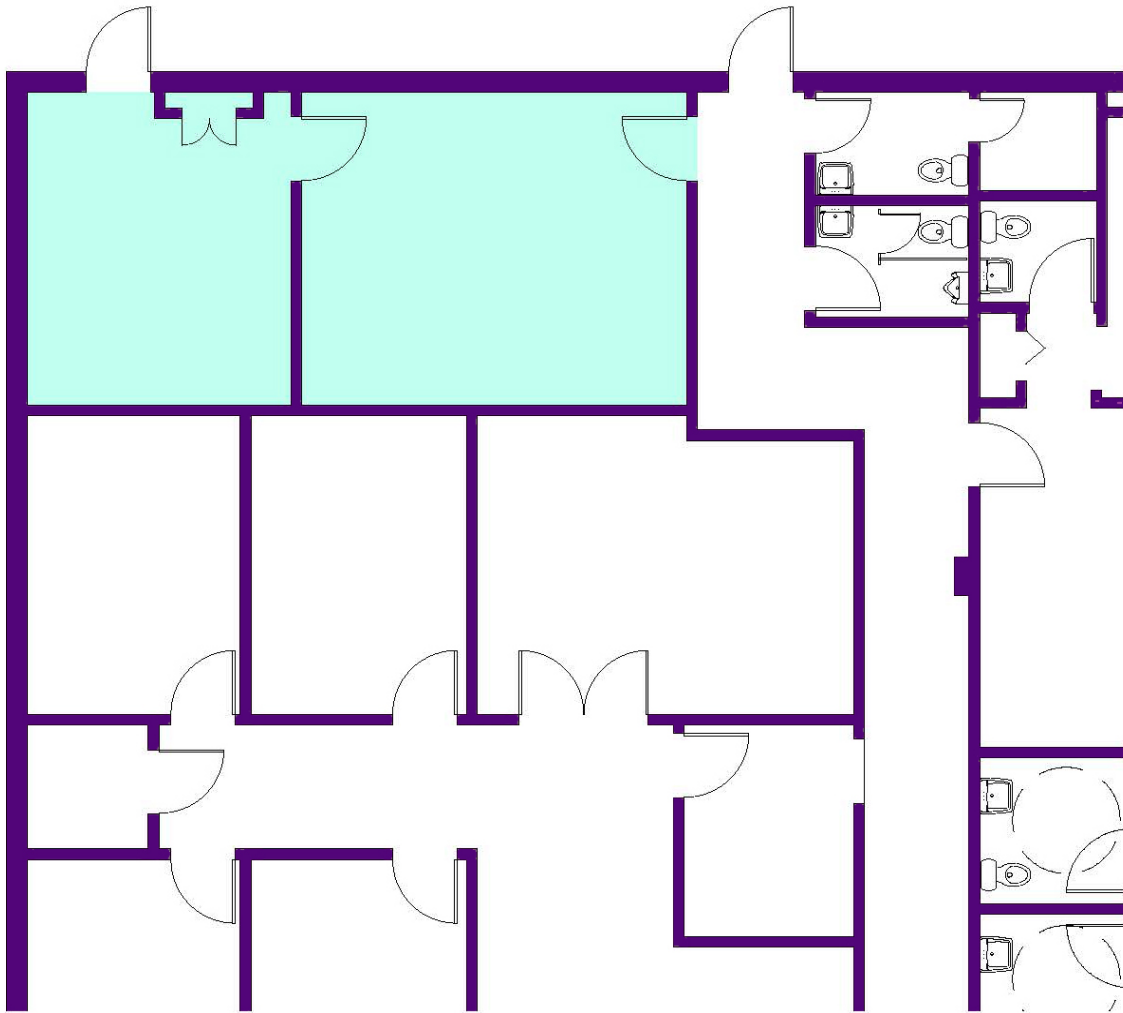
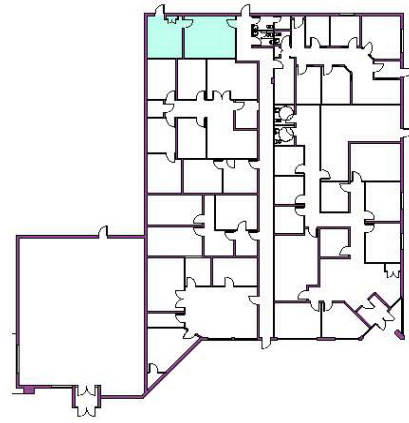


8899 MAIN STREET
Williamsville, New York 14221

Casilio Real Estate & Development Corp.

2457 Wehrle Drive, Williamsville, New York 14221
p. 716.633.7715 | f. 716.633.9937

DISCLAIMER: All information shown in this document is deemed reliable and is used to convey marketing information of the property. No representation is made as to the accuracy thereof, and such information is subject to errors, omission, change of price, rental, commission, prior sale, lease or financing, or withdrawal without notice. All square footage and dimensions are approximate. Exact dimensions can be obtained by retaining the services of a professional surveyor, architect or engineer.



AREA 3- 492 SQUARE FEET

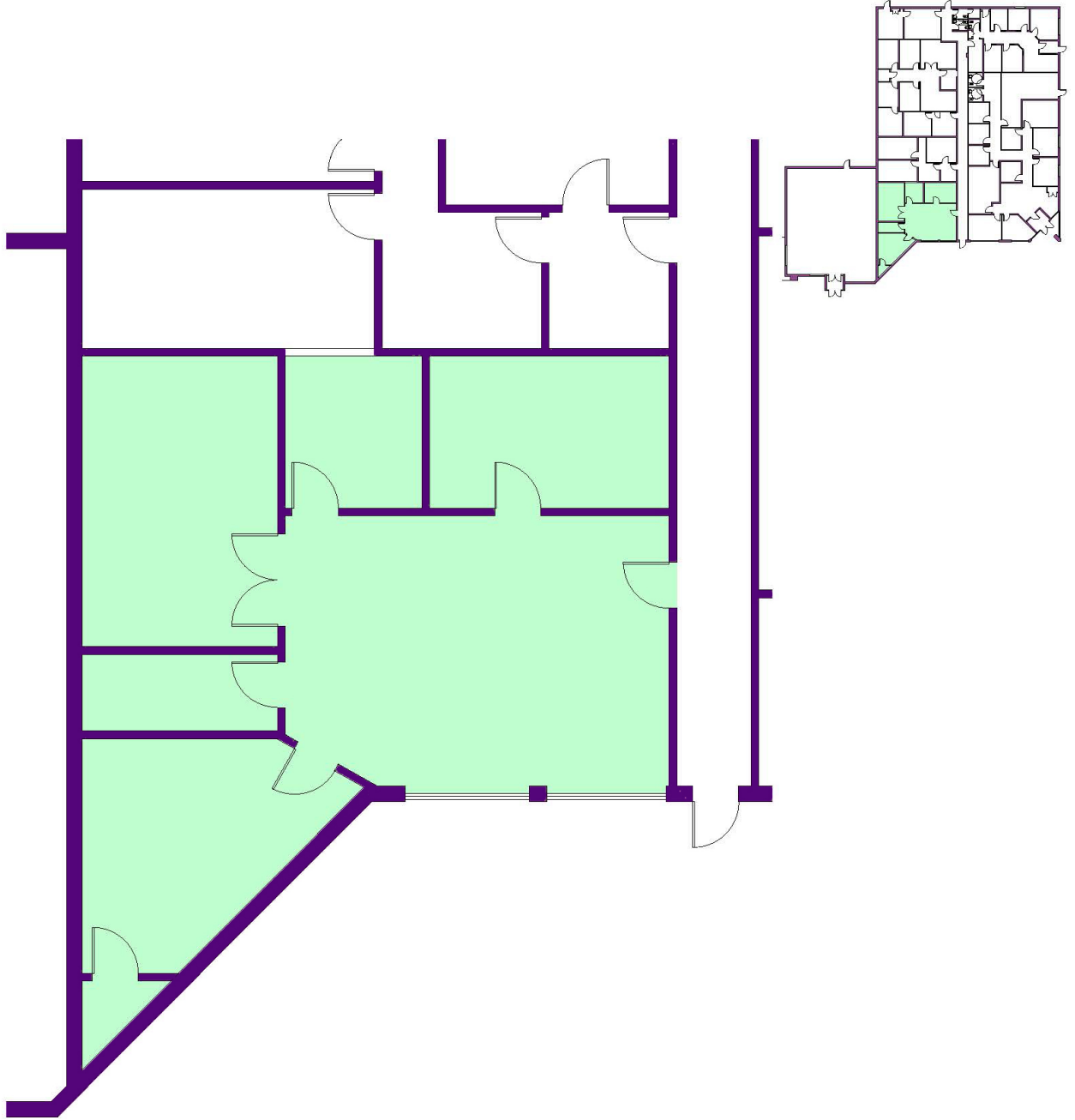


8899 MAIN STREET
Williamsville, New York 14221

Casilio Real Estate & Development Corp.

2457 Wehrle Drive, Williamsville, New York 14221
p. 716.633.7715 | f. 716.633.9937

DISCLAIMER: All information shown in this document is deemed reliable and is used to convey marketing information of the property. No representation is made as to the accuracy thereof, and such information is subject to errors, omission, change of price, rental, commission, prior sale, lease or financing, or withdrawal without notice. All square footage and dimensions are approximate. Exact dimensions can be obtained by retaining the services of a professional surveyor, architect or engineer.



AREA 7- 1307 SQUARE FEET



8899 MAIN STREET
Williamsville, New York 14221

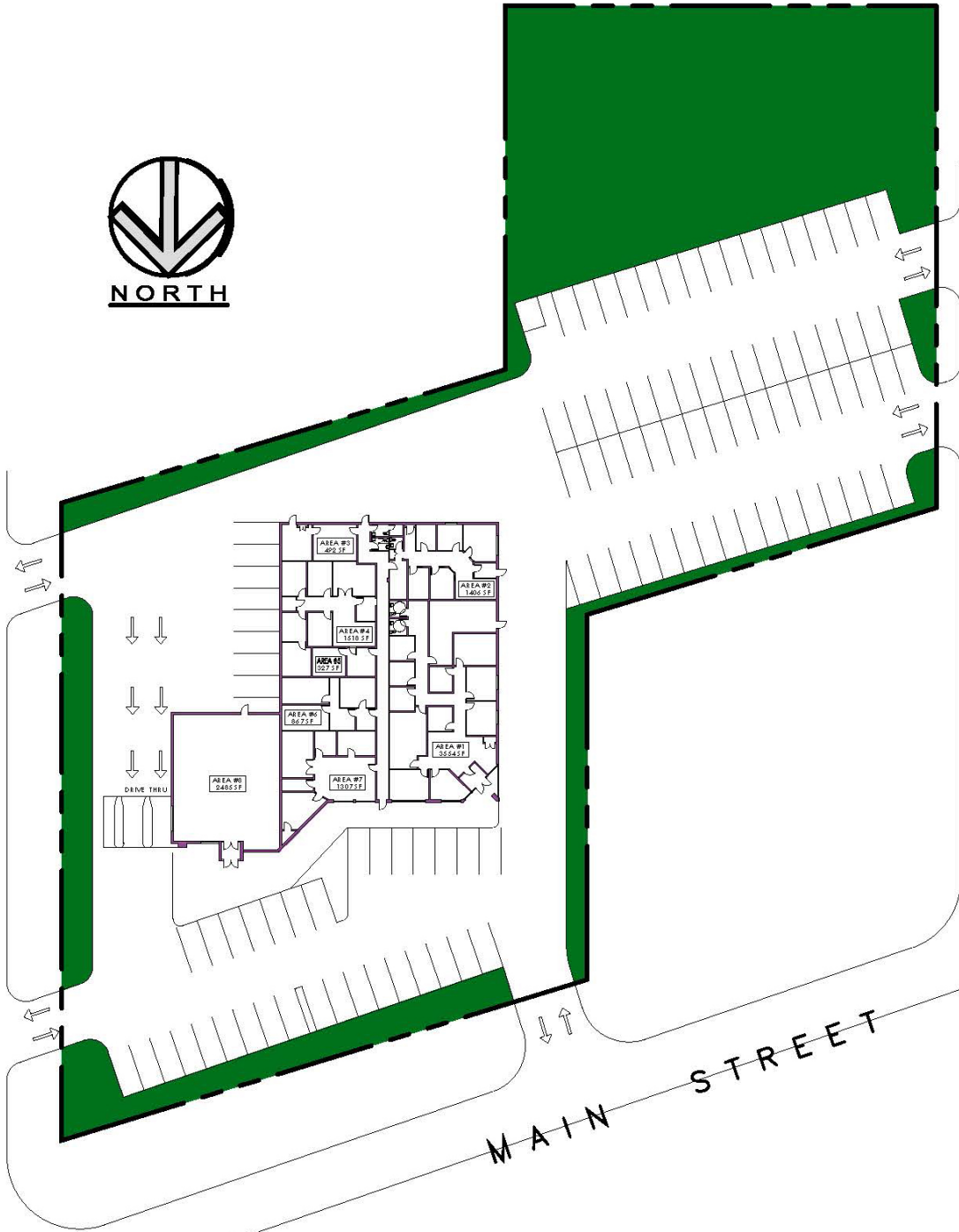
Casilio Real Estate & Development Corp.

2457 Wehrle Drive, Williamsville, New York 14221
p. 716.633.7715 | f. 716.633.9937

DISCLAIMER: All information shown in this document is deemed reliable and is used to convey marketing information of the property. No representation is made as to the accuracy thereof, and such information is subject to errors, omission, change of price, rental, commission, prior sale, lease or financing, or withdrawal without notice. All square footage and dimensions are approximate. Exact dimensions can be obtained by retaining the services of a professional surveyor, architect or engineer.



SHIMMERVILLE ROAD



CAMERON DRIVE

MAIN STREET

SITE PLAN



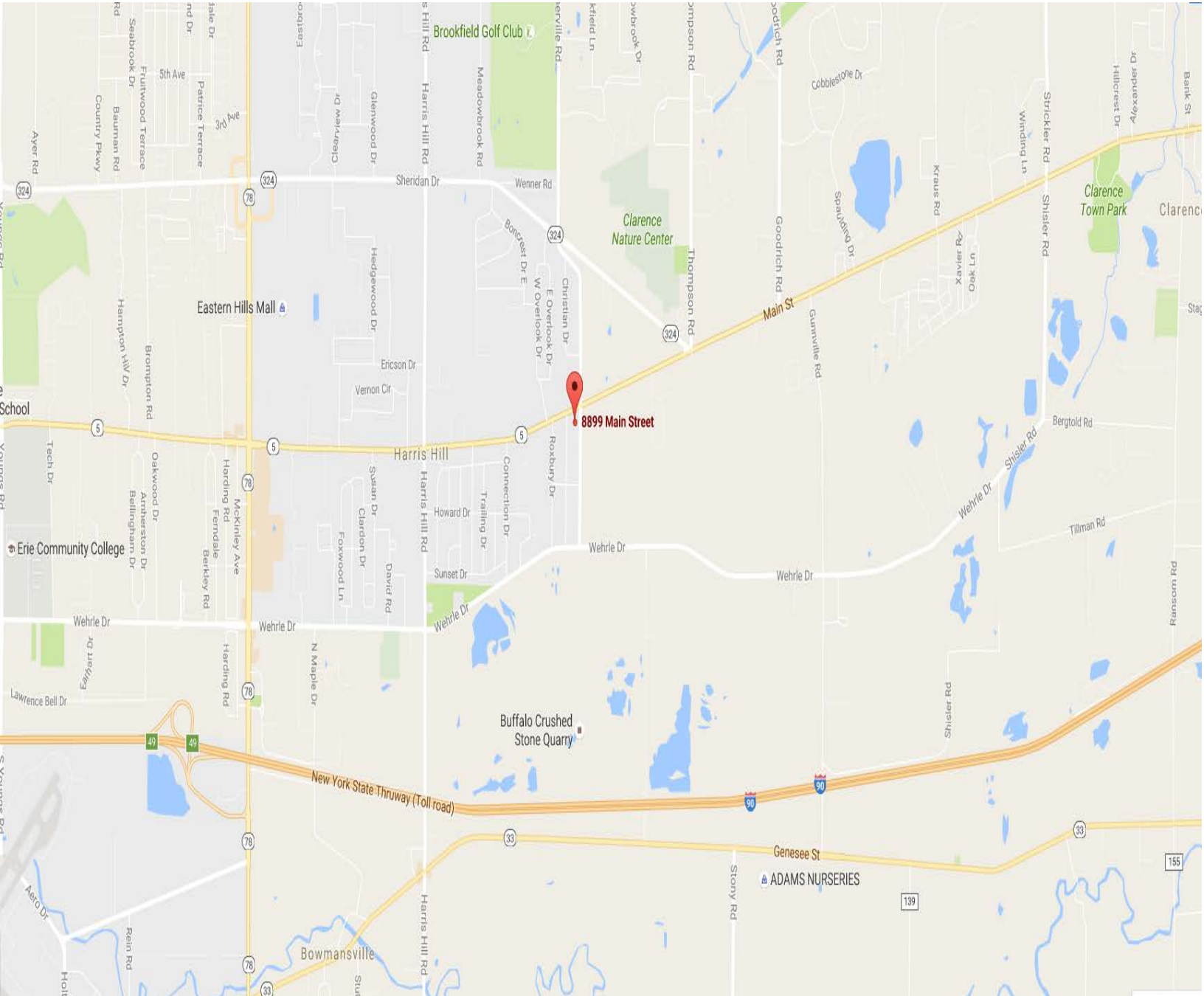
8899 MAIN STREET
Williamsville, New York 14221

Casilio Real Estate & Development Corp.
2457 Wehrle Drive, Williamsville, New York 14221
p. 716.633.7715 | f. 716.633.9937

DISCLAIMER: All information shown in this document is deemed reliable and is used to convey marketing information of the property. No representation is made as to the accuracy thereof, and such information is subject to errors, omission, change of price, rental, commission, prior sale, lease or financing, or withdrawal without notice. All square footage and dimensions are approximate. Exact dimensions can be obtained by retaining the services of a professional surveyor, architect or engineer.

8899 MAIN STREET

OFFICE BUILDING FOR LEASE



CASILIO REAL ESTATE & DEVELOPMENT CORP.
2457 WEHRLE DRIVE, WILLIAMSVILLE NY 14221
P: 716-633-7715 F: 716-633-9937 W: WWW.CASILIOCO.COM

CAROLYN CASILIO, PHILIP CASILIO
INFO@CASILIOCO.COM
8899 MAIN STREET, WILLIAMSVILLE, NY 14221