

11358 MAIN STREET, BLDG. C.

MAIN ST., NEWSTEAD, NY

OFFICE/INDUSTRIAL/WAREHOUSE FOR LEASE



SUMMARY OF PROPERTY

SQUARE FEET: 9,160 SF

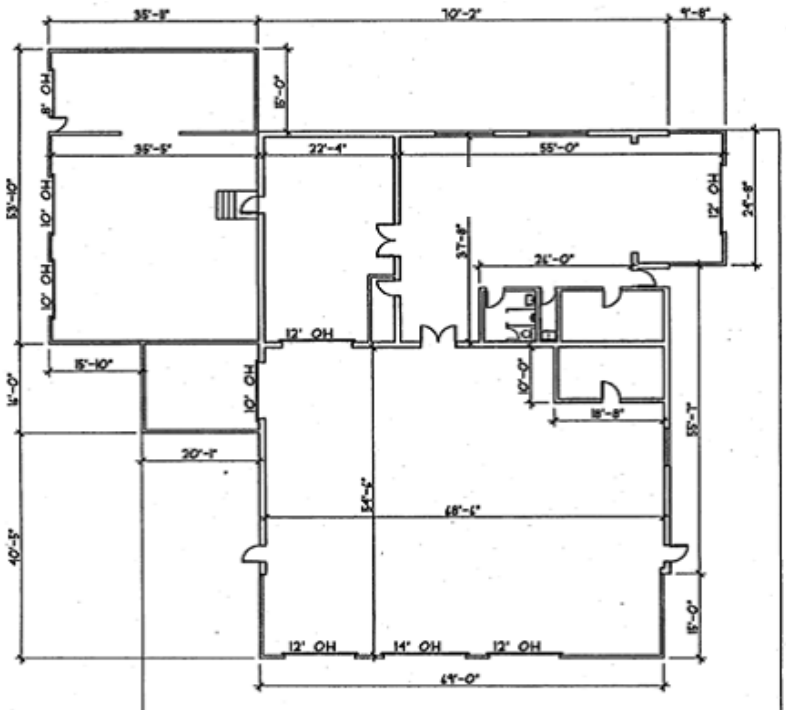
OVERHEAD DOORS: 6

Building C is an Office-Industrial-Warehouse space located at 11358 Main Street in Newstead, NY.

Building C is conveniently accessible to the NYS Thruway via two major exits, Exit 49 at Transit Road and Exit 48A within Pembroke. In addition to the six overhead doors, the property is equipped with a drive-in loading dock.

LOCATION HIGHLIGHTS

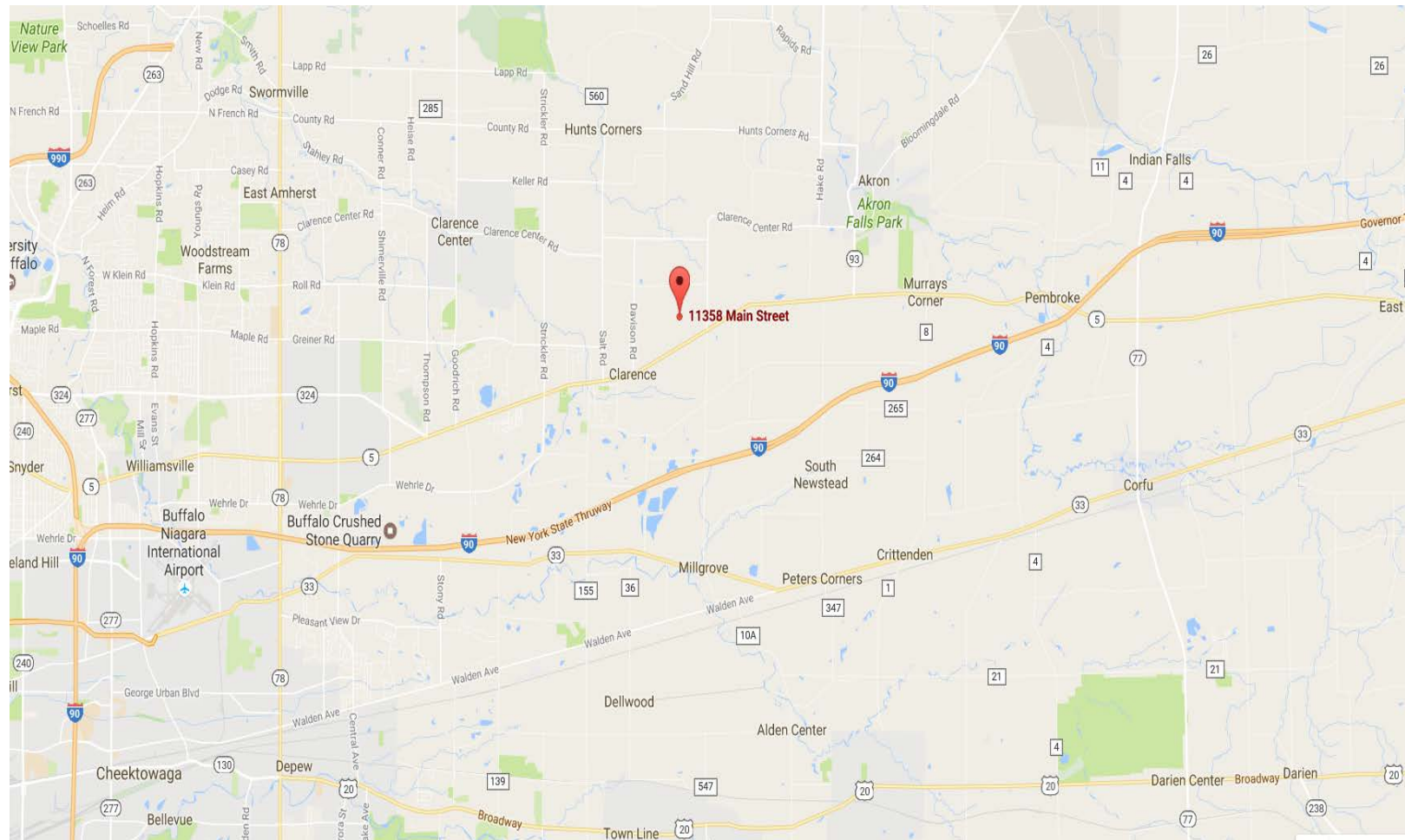
- Less than 7 miles east from the NYS Thruway I-90 via Exit 48A, Pembroke.
- Less than 15 miles from the NYS Thruway I-90 via Exit 49, Transit Road.
- 13 miles east from the Buffalo Niagara International Airport.



11358 MAIN STREET, BLDG. C.

MAIN ST., NEWSTEAD, NY

OFFICE/INDUSTRIAL/WAREHOUSE FOR LEASE



CASILIO REAL ESTATE & DEVELOPMENT CORP.
2457 WEHRLE DRIVE, WILLIAMSVILLE NY 14221
P: 716-633-7715 F: 716-633-9937 W: WWW.CASILIOCO.COM

CAROLYN CASILIO
INFO@CASILIOCO.COM
11358 MAIN STREET, NEWSTEAD, NY 14031